

Supplementary information

The prepared catalyst precursors were characterised by powder X-ray diffraction method. Figure SI 1 shows the XRD pattern of prepared nickel formate. They have the characteristic peaks a,b, c and d (JCPDS 14-0813)

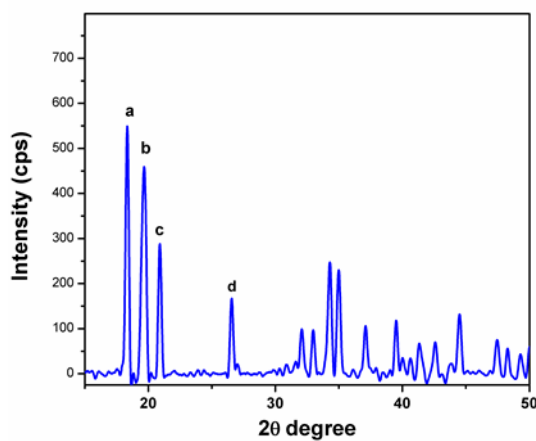


Fig. SI.1 XRD pattern of nickel formate. Peak a, b, c and d are the characteristic peaks of nickel formate (JCPDS 14-0813).

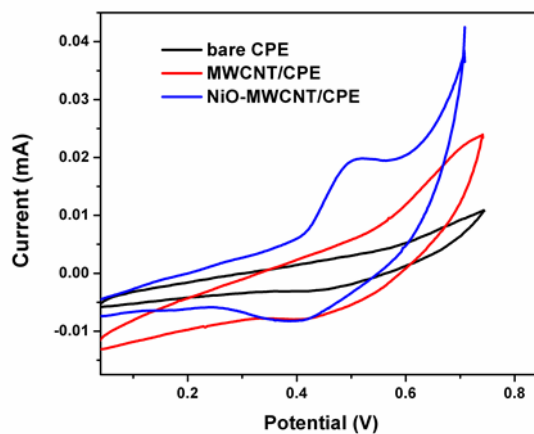


Fig. SI.2 CV of bare CPE, MWCNT/CPE and NiO/CPE electrodes at the scan rate of 50 mVs^{-1} in 1 mM NaOH.

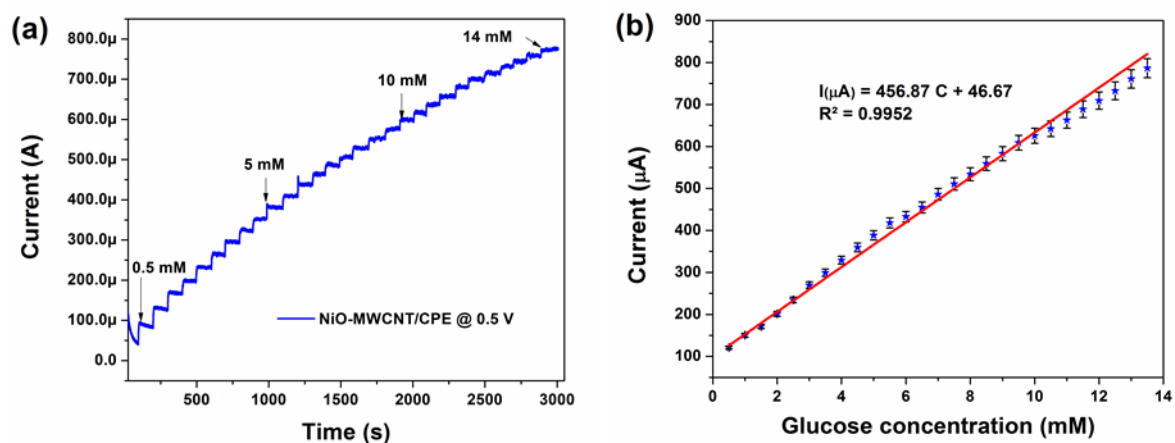


Fig. S1.3 (a) amperometric responses of NiO-MWCNT/CPE electrode upon the successive addition of 0.5 mM glucose (b) the amperometric current plotted vs. total glucose concentration, and their corresponding linear calibration curves (0.5 mM -14 mM).