

Supplementary information

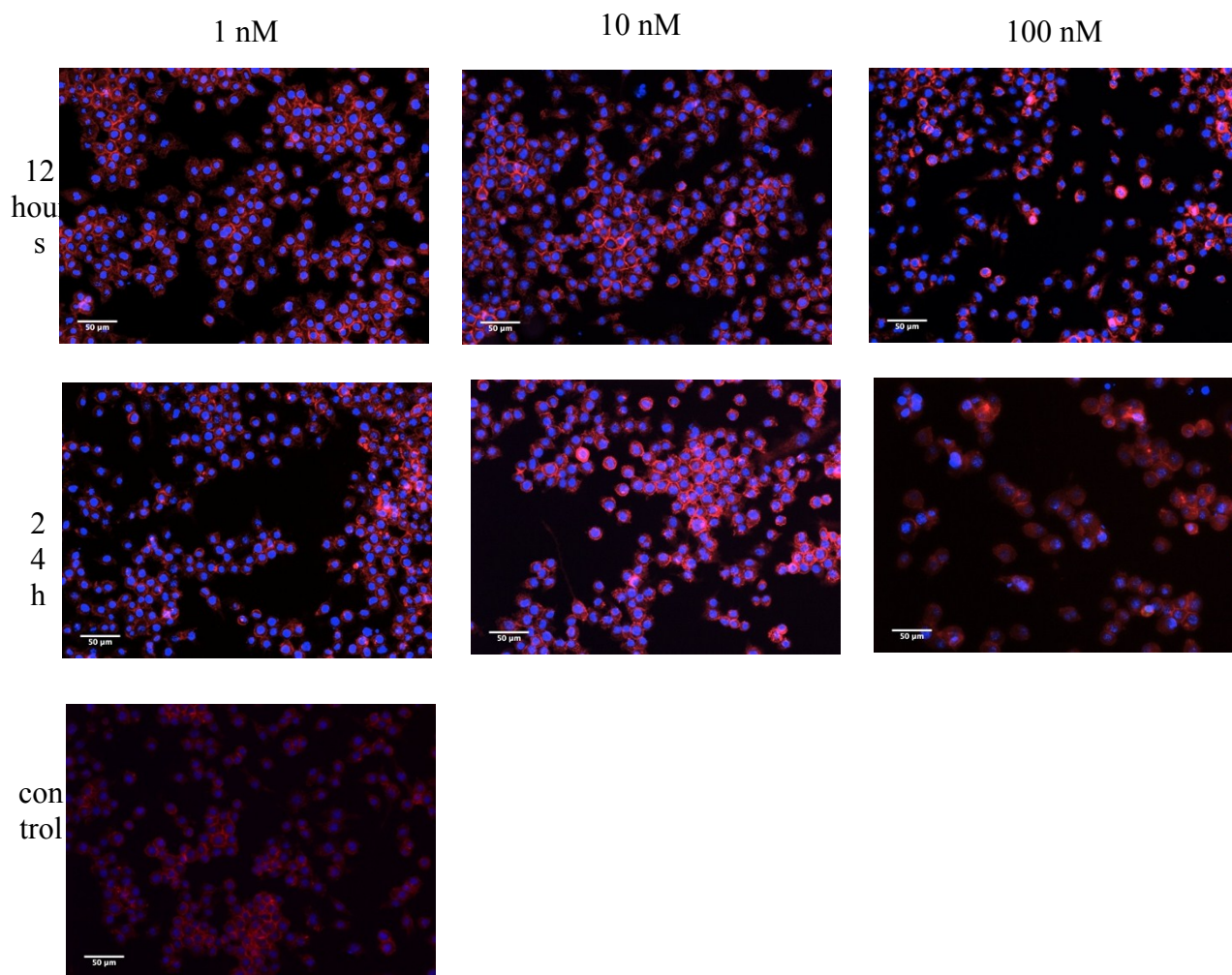


Fig. 1 RAW264.7 cell morphology after exposure to 1-100 nM green TGA QDs for 12 and 24 hours. Stains: red colour – actin phalloidin eFluor660, blue colour – DAPI (nuclei). Scale bar 50 um.

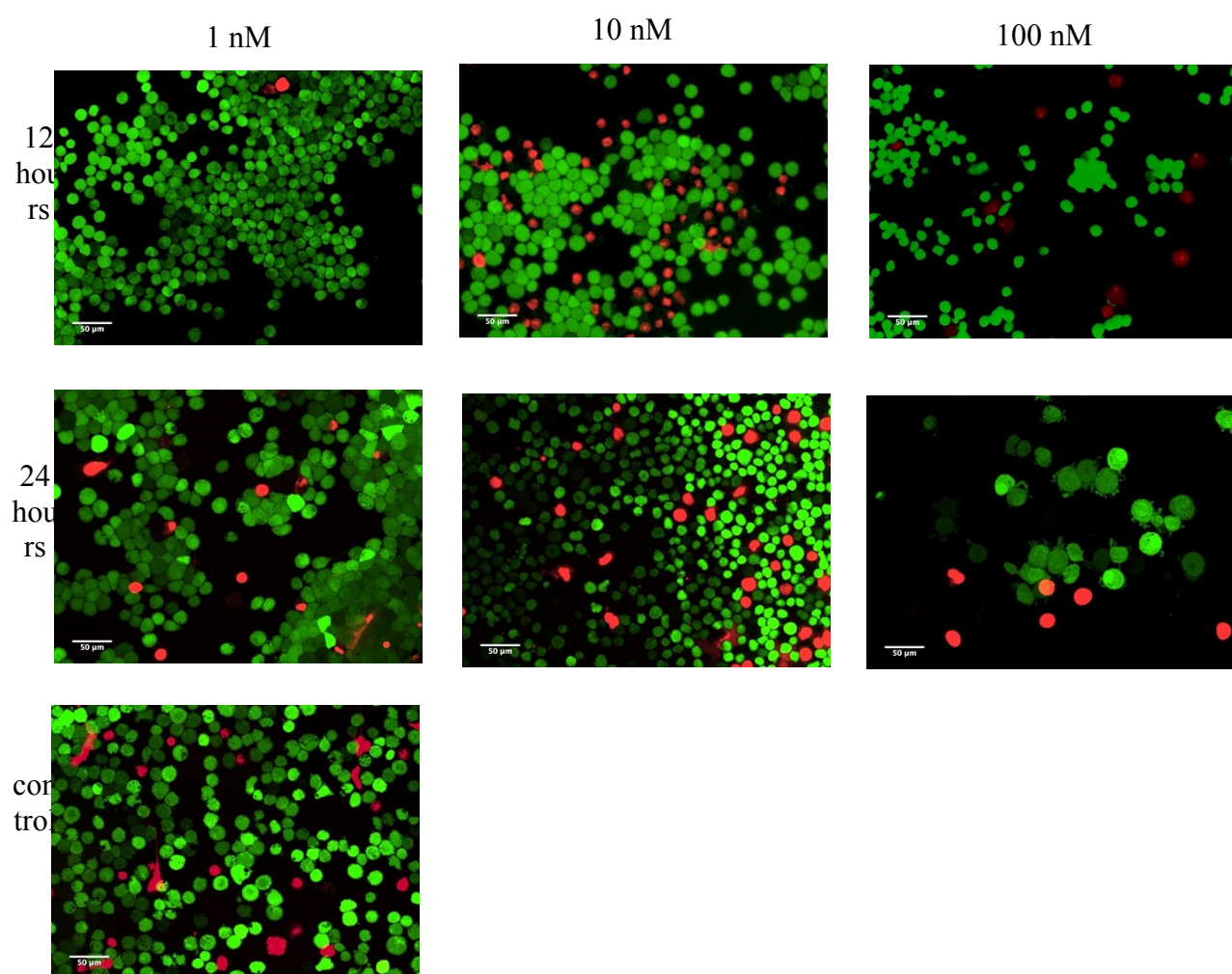


Fig. 2 Live/Dead assay for RAW264.7 monocytes after 12 or 24 hours co-incubation with 1-100 nM of green TGA QDs. Stains: green (calcein) indicates viable cells, red (ethidium bromide) – necrotic cells. Scale bar is 50 μm .

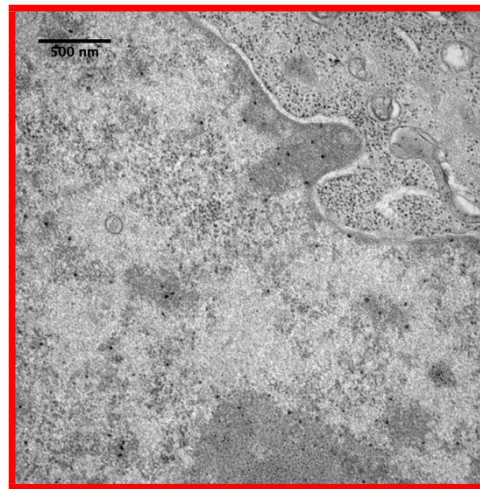
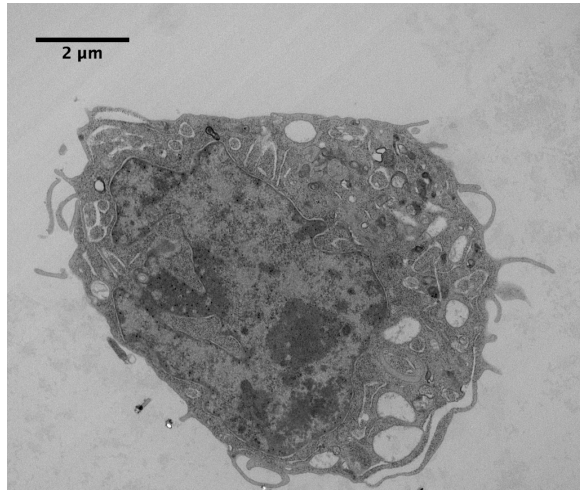
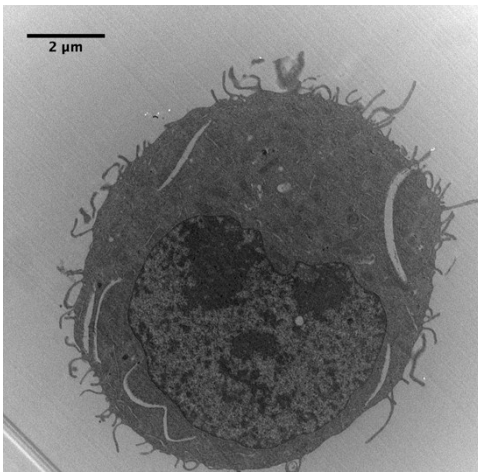


Fig. 3 TEM images of RAW264.7 cells treated with 100 nM green TGA QDs for 12 hours (Fig. B,C) and untreated control (Fig.A). Fig. B,C shows all apoptosis hallmarks: condensed chromatin is moved to periphery, cytoplasm granulation, mitochondria blebbing. Fig. C shows QDs in nucleus (black dots) area and membrane invagination. Fig. A shows healthy cell morphology.