

Figure S1. Representative Raman spectra of unpatterned CVD-grown graphene and TBN-patterned graphene. CVD-grown graphene (black) is largely monolayer with very small D-peak indicating largely defect free growth. The D-peak becomes more prominent in the circular patterned graphene (blue) which is approximately 450 nm wide and in the GNRs (red) which are approximately 250 nm in width.

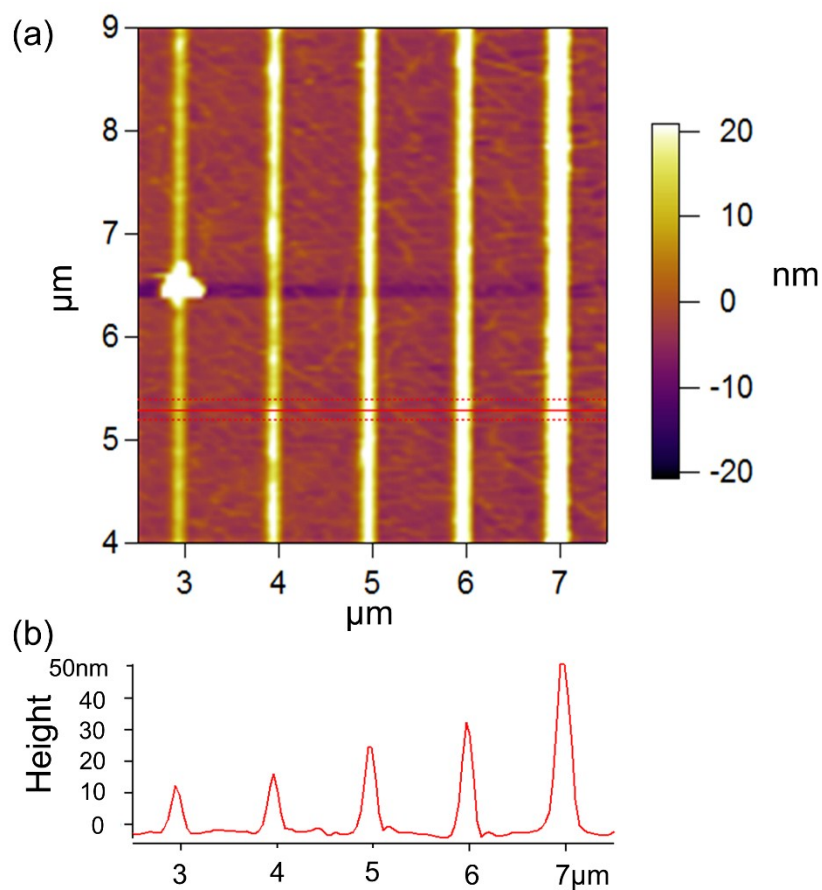


Figure S2. (a) AFM topography image of PMMA nanowires desposited by the heated AFM tip at a scan speed of 400nm/s and at temperature of 260 °C, 265 °C, 270 °C, 275 °C and 280 °C from left to right. (b) Cross-sectional profile of PMMA nanowires with the leftmost one as narrow as 200nm.