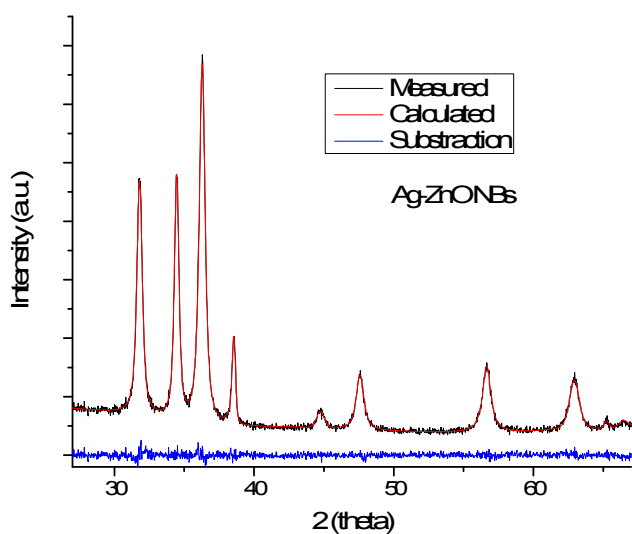


Supplementary Information (SI)



Rietveld refinement method and TOPAS program were used to determinate the crystallite size and the quantitative phases of the Ag-ZnO NBs from the XRD diffraction patterns.

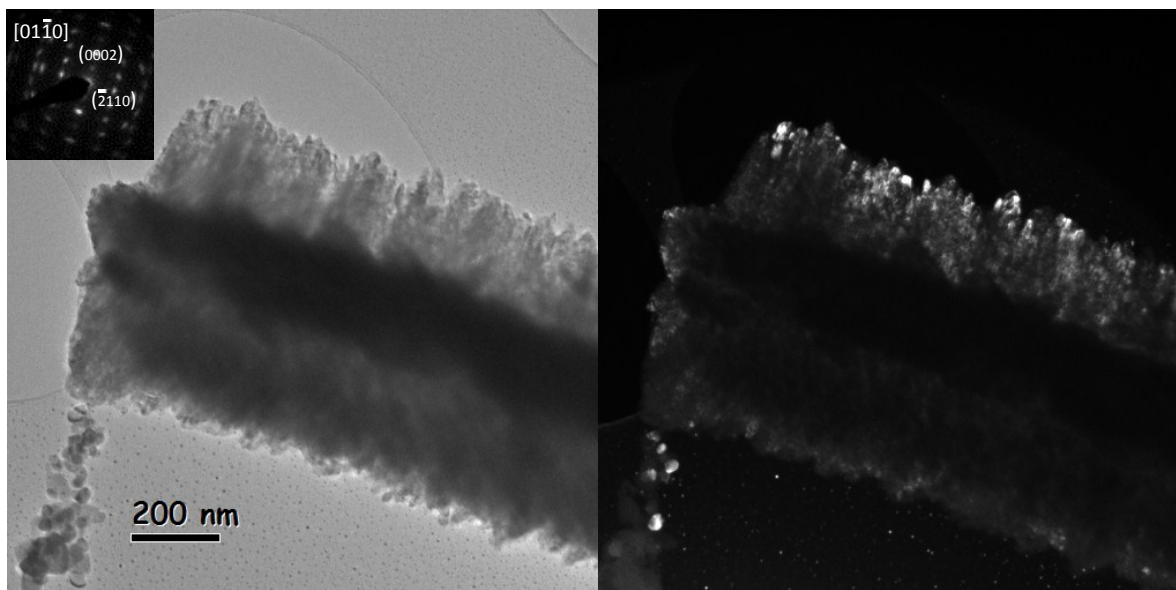


Figure. TEM image of the Ag-ZnO NBs. A) Bright Field image and B) Dark Field image obtained from the diffracted (0002) plane of the ZnO phase.