

Electronic Supplementary Information

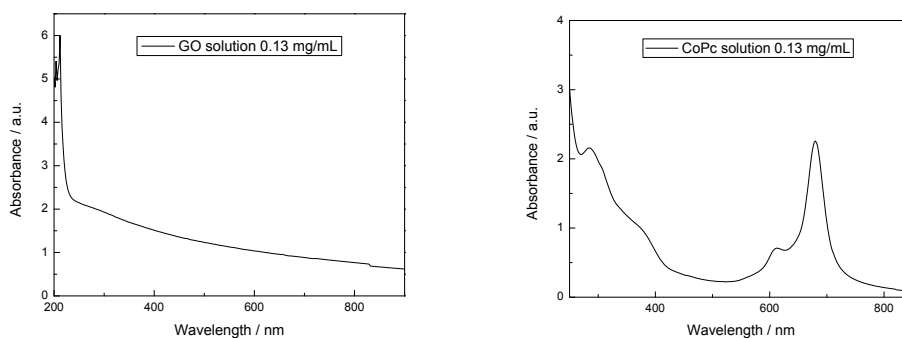
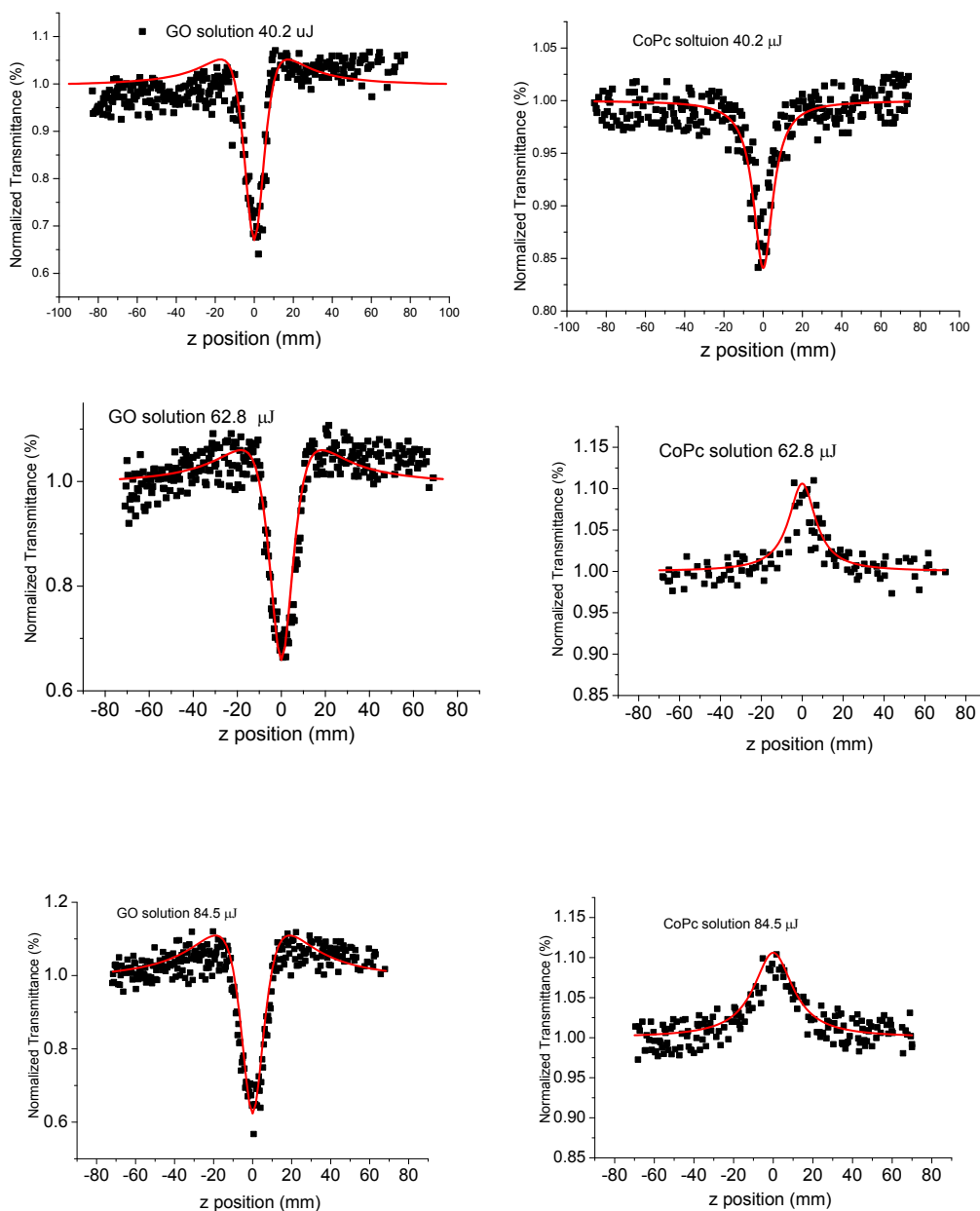


Fig. S1 UV-Vis spectra of 0.13 mg/mL CoPc and 0.13 mg/mL GO aqueous solution.



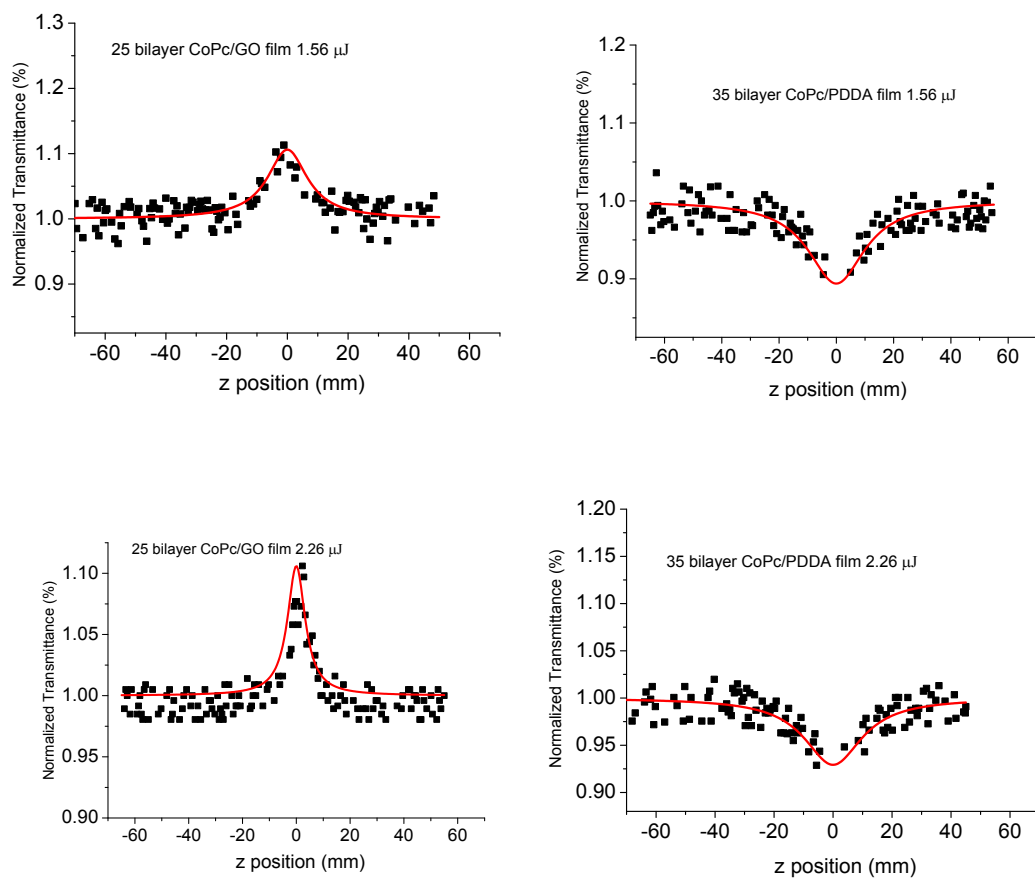


Fig. S2 The normalized transmittance curves (open aperture) of 0.13 mg/mL GO solution, 0.13 mg/mL CoPc solution, and the composite films.

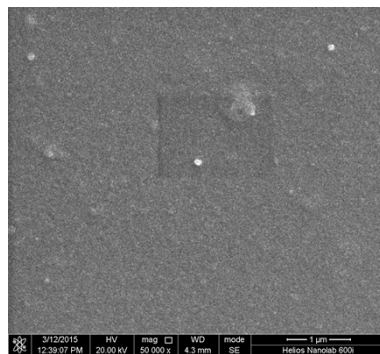


Fig. S3 The SEM image of the 35 bilayer CoPc/PDDA film