

Supporting Information for

Controllable Synthesis of In₂O₃ Octodecahedra Exposing {110} Facets

with Enhanced Gas Sensing Performance

Jijiang Liu,^{ab} Gang Chen,^{*a} Yaoguang Yu,^{*a} Yalin Wu,^b Mingjun Zhou,^b Hongquan Zhang,^c

Chade Lv,^a Yi Zheng,^a Fang He^a

^aDepartment of Chemistry, Harbin Institute of Technology, Harbin 150001, *P. R. China*

^bThe 49th Research Institute, China Electronic Technology Group Corporation, Harbin 150001, *P. R. China*

^cSchool of Automation, Harbin Engineering of University, Harbin 150001, *P. R. China*

E-mail: gchen@hit.edu.cn; (G. Chen); ygyu@hit.edu.cn (Y. G. Yu) Fax: +86-451-86403117; Tel: +86-451-86403117.

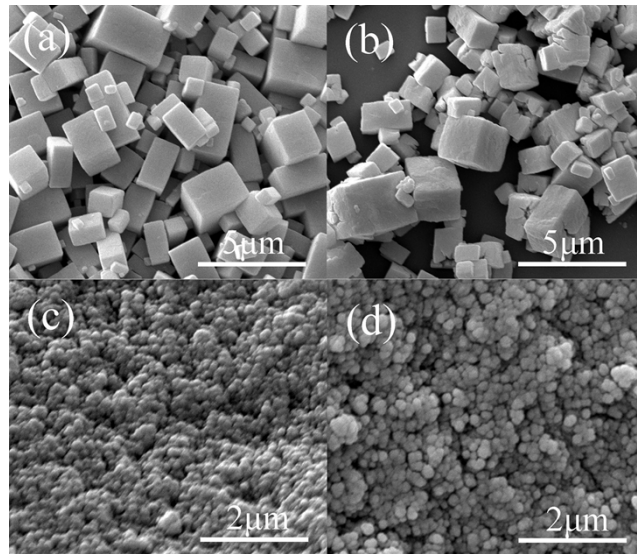


Fig. S1 SEM images of $\text{In}(\text{OH})_3$ and In_2O_3 : (a, b) cubes and (c, d) particles.

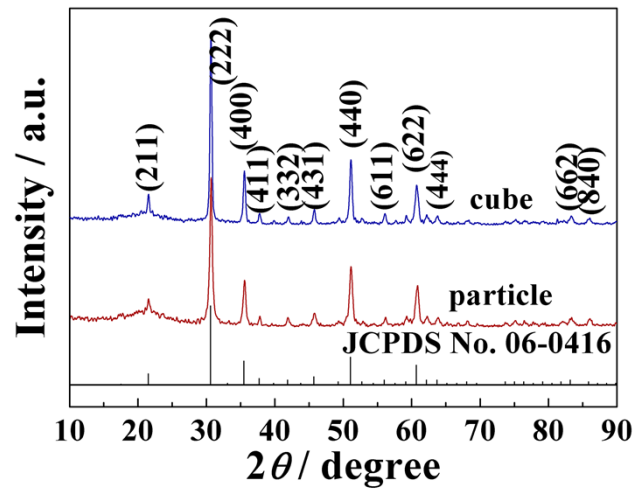


Fig. S2 XRD patterns of In_2O_3 cubes and particles.