

Electronic Supplementary Information

Underwater Superoleophobic Meshes Fabricated by Poly(sulfobetaine)/Polydopamine Co-deposition

Peng-Fei Ren, Hao-Cheng Yang, Yi-Ning Jin, Hong-Qing Liang,
Ling-Shu Wan* and Zhi-Kang Xu*

*MOE Key Laboratory of Macromolecular Synthesis and Functionalization, Department of Polymer Science
& Engineering, Zhejiang University, Hangzhou 310027, China*

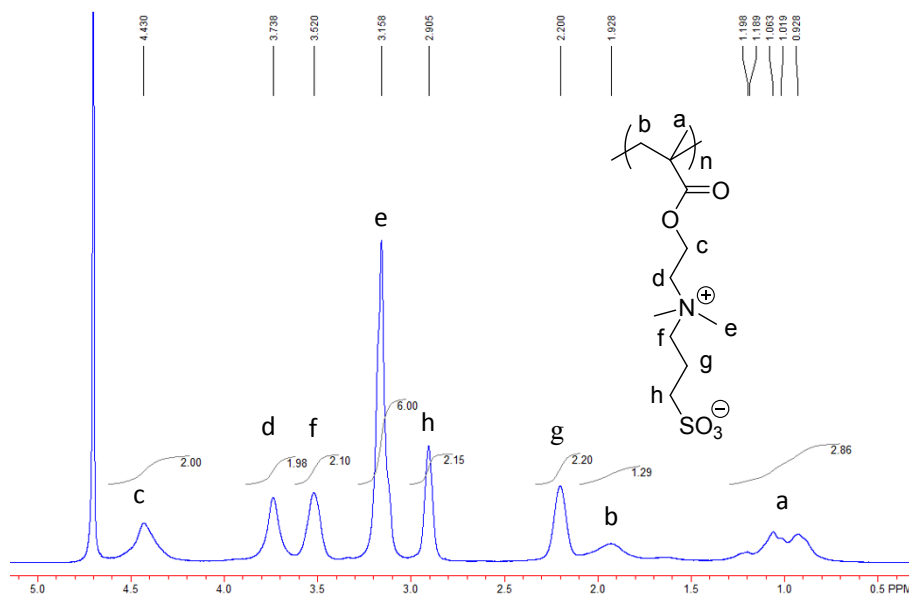


Fig. S1 ¹H NMR spectrum of PSBMA

Table S1. Average molecular weight and polydispersity of PSBMA determined by GPC

M_n (10^4 g/mol)	M_w (10^4 g/mol)	M_p (10^4 g/mol)	Polydispersity	% Area	M_{Z+1} (10^4 g/mol)	M_Z (10^4 g/mol)
1.20	3.00	2.03	2.50	100	11.75	6.58

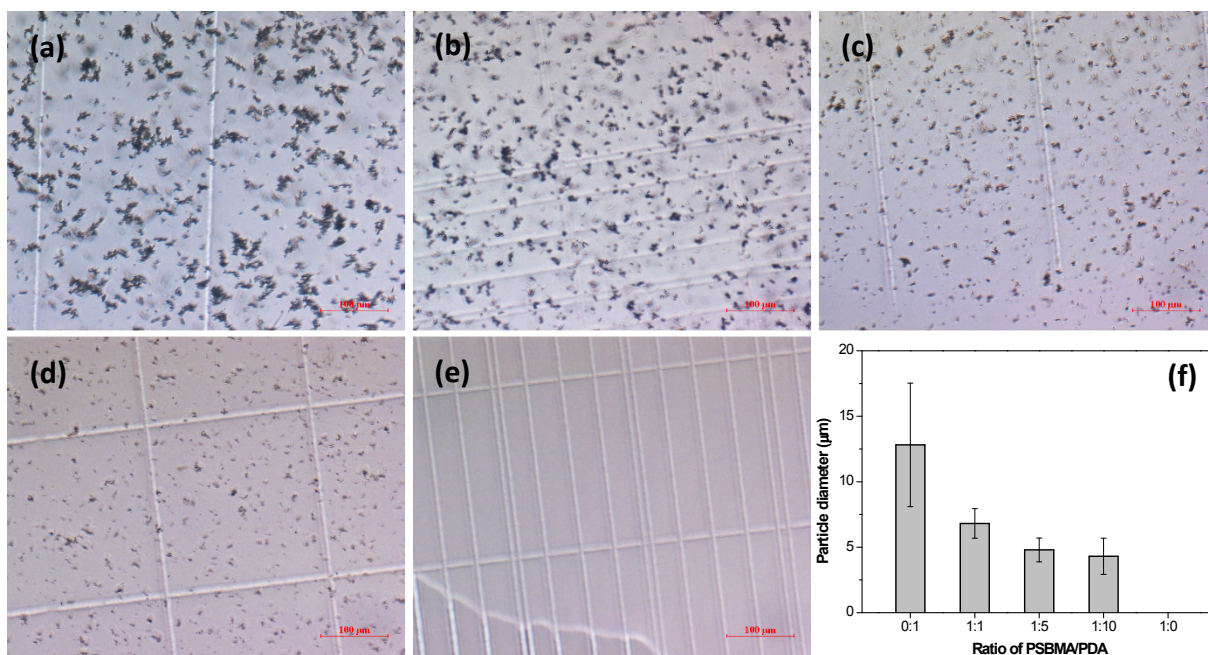


Fig. S2 Morphology and size of the formed particles in the reaction solution with a PSBMA/PA ratio of (a) 0:1, (b) 1:1, (c) 5:1, (d) 10:1 and (e) 1:0, respectively. The particle diameters are calculated and summarized in (f).