

Electronic Supplementary Information for
Low temperature direct bonding of silica glass via wet
chemical surface activation

Chengle Mai,^a Mingyu Li^{*a} and Shihua Yang^b

*^aState Key Laboratory of Advanced Welding and Joining, Harbin Institute of Technology
Shenzhen Graduate School, Shenzhen, 518055, People's Republic of China. E-mail:
myli@hit.edu.cn (M. Li); Tel: +86-755-26033463.*

^bShanghai Aerospace Equipments Manufacturer, Shanghai, 200245, People's Republic of China.

This supporting information includes:

Fig. S1 Schematics of experimental setup for the maximum pressure tests.

Fig. S2 Top view optical image of the channel with dyed water after the leakage test.

Movie 1: Result of leakage test done by infusing a red dye solution through the channel. (attached as a separated file)

Movie 2: Result of leakage test done by closing the channel end using rubber. (attached as a separated file)

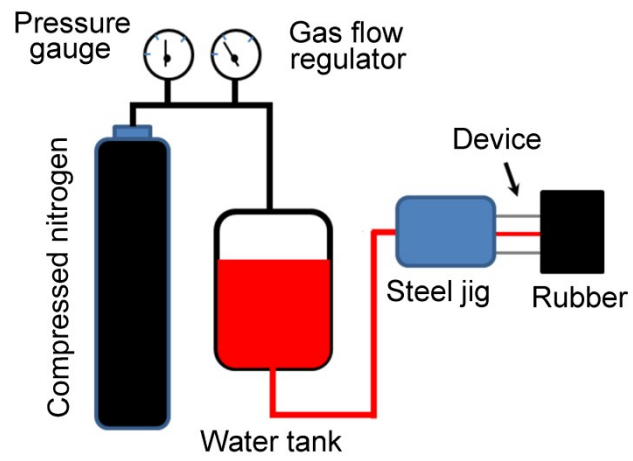


Fig. S1 Schematics of experimental setup for the maximum pressure tests.

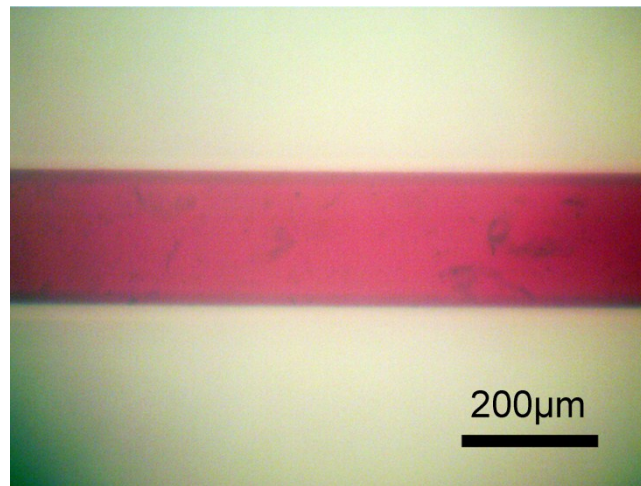


Fig. S2 Top view optical image of the channel with dyed water after the leakage test.