

ESI to accompany

Copper(I)-based dye-sensitized solar cells with sterically demanding anchoring ligands: bigger is not always better

Sven Y. Brauchli,^a Frederik J. Malzner,^a Edwin C. Constable^a and Catherine E. Housecroft^{*a}

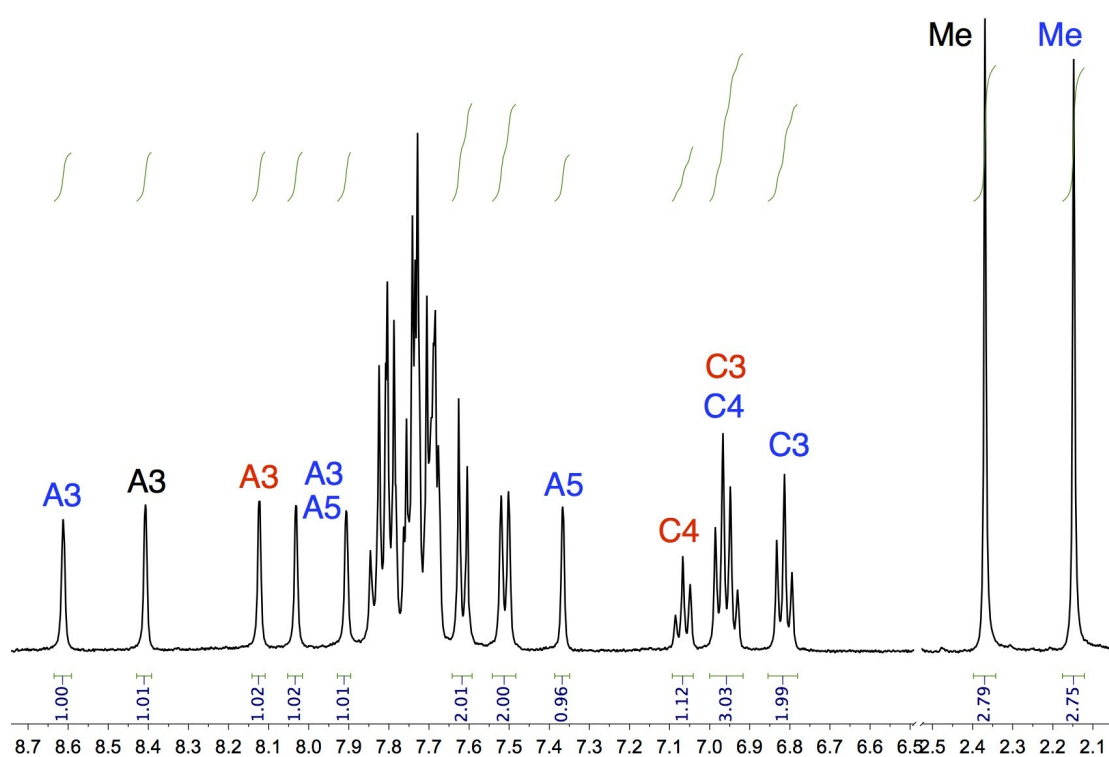


Fig. S1. 500 MHz ¹H NMR spectra of a CD₂Cl₂ solution of a 1 : 1 mixture of [Cu(3)₂][PF₆] and [Cu(4)₂][PF₆] demonstrating the statistical (1 : 2 : 1) mixture of [Cu(3)₂][PF₆] (black), [Cu(3)(4)][PF₆] (blue) and [Cu(4)₂][PF₆] (red). Ring labelling is given in Scheme 3.