

Supercritical extraction as an effective first-step in a maize stover biorefinery.

Thomas M. Attard, Elke Theeuwes , Leonardo D. Gomez , Emma Johansson , Ioanna Dimitriou, Phillip C. Wright, James H. Clark, Simon J. McQueen-Mason and Andrew J. Hunt.

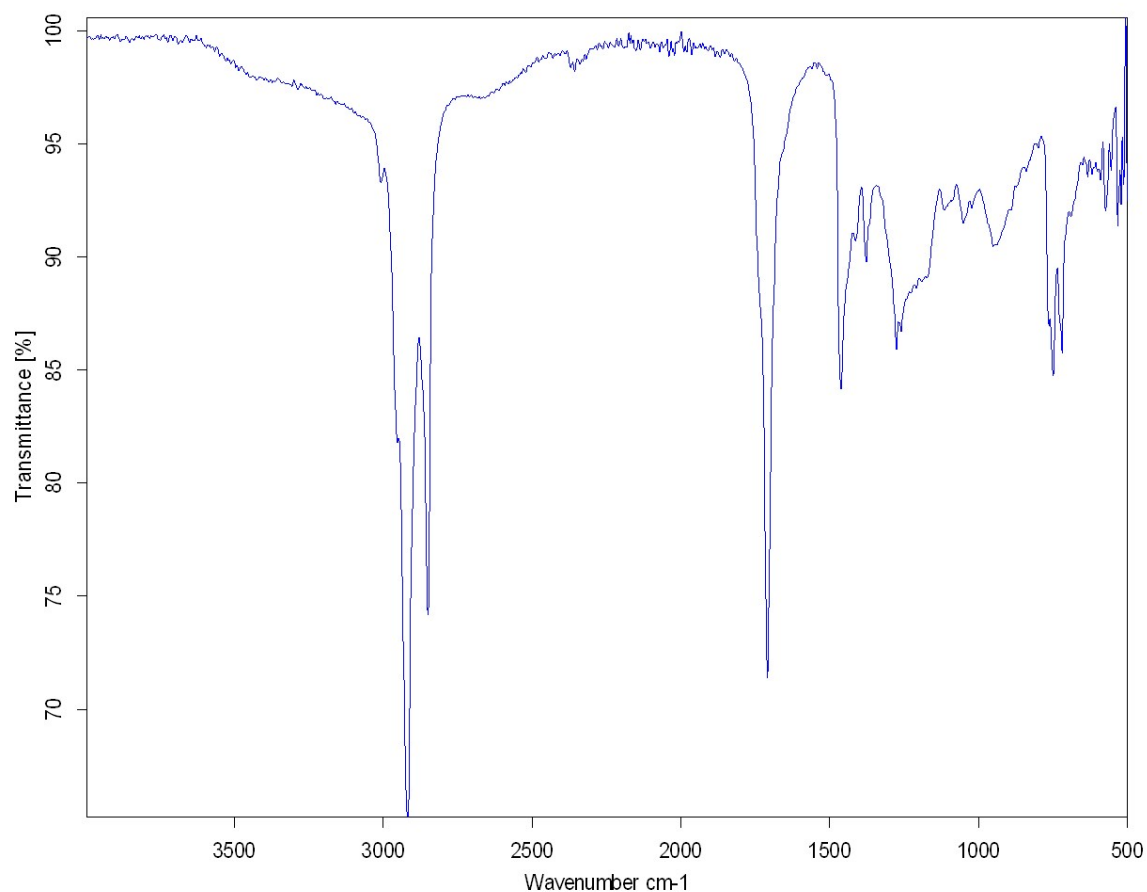


Figure S1 IR data of Fraction C

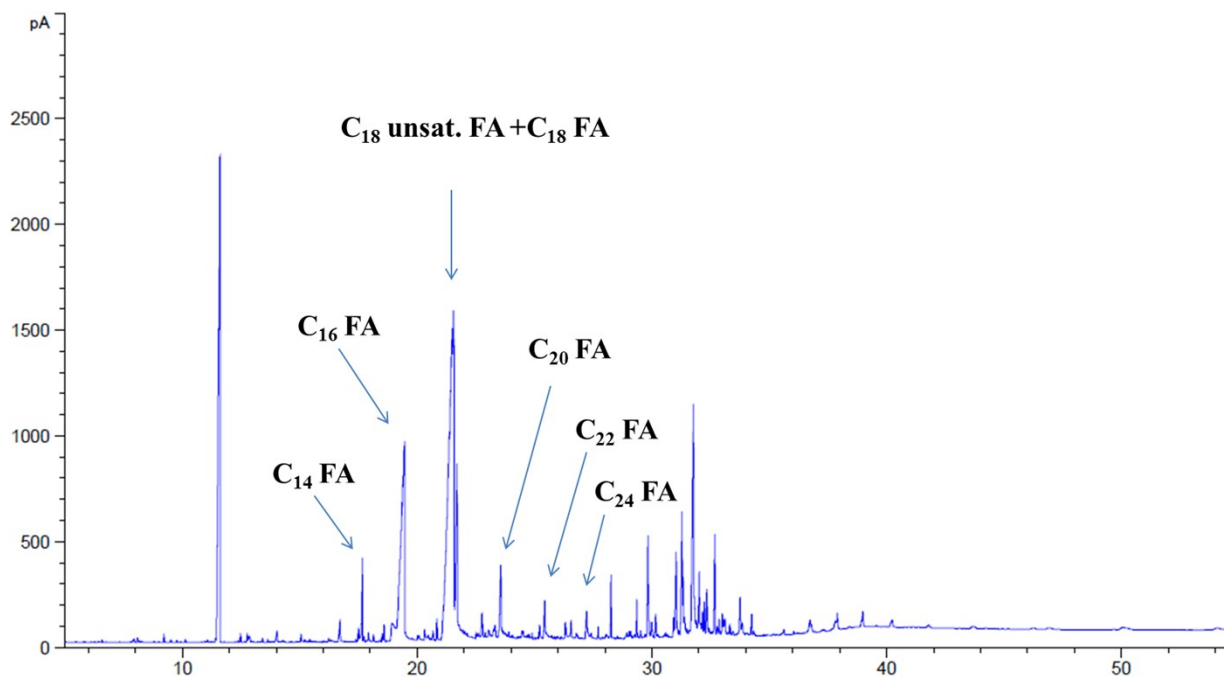


Figure S2 GC chromatogram of underivatized wax FRACTION C (indicating some of the fatty acids (FA) identified)

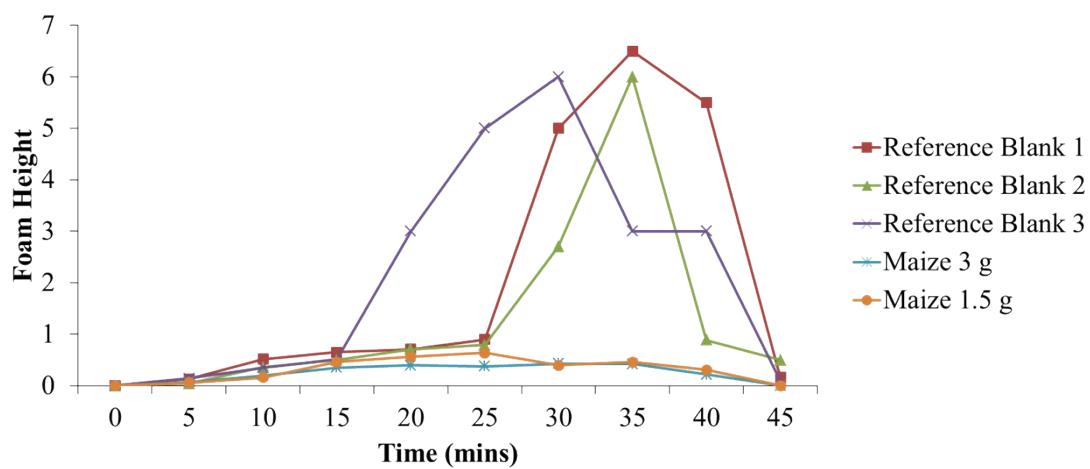


Figure S3 Rough measurements of foam height during the washing machine run.