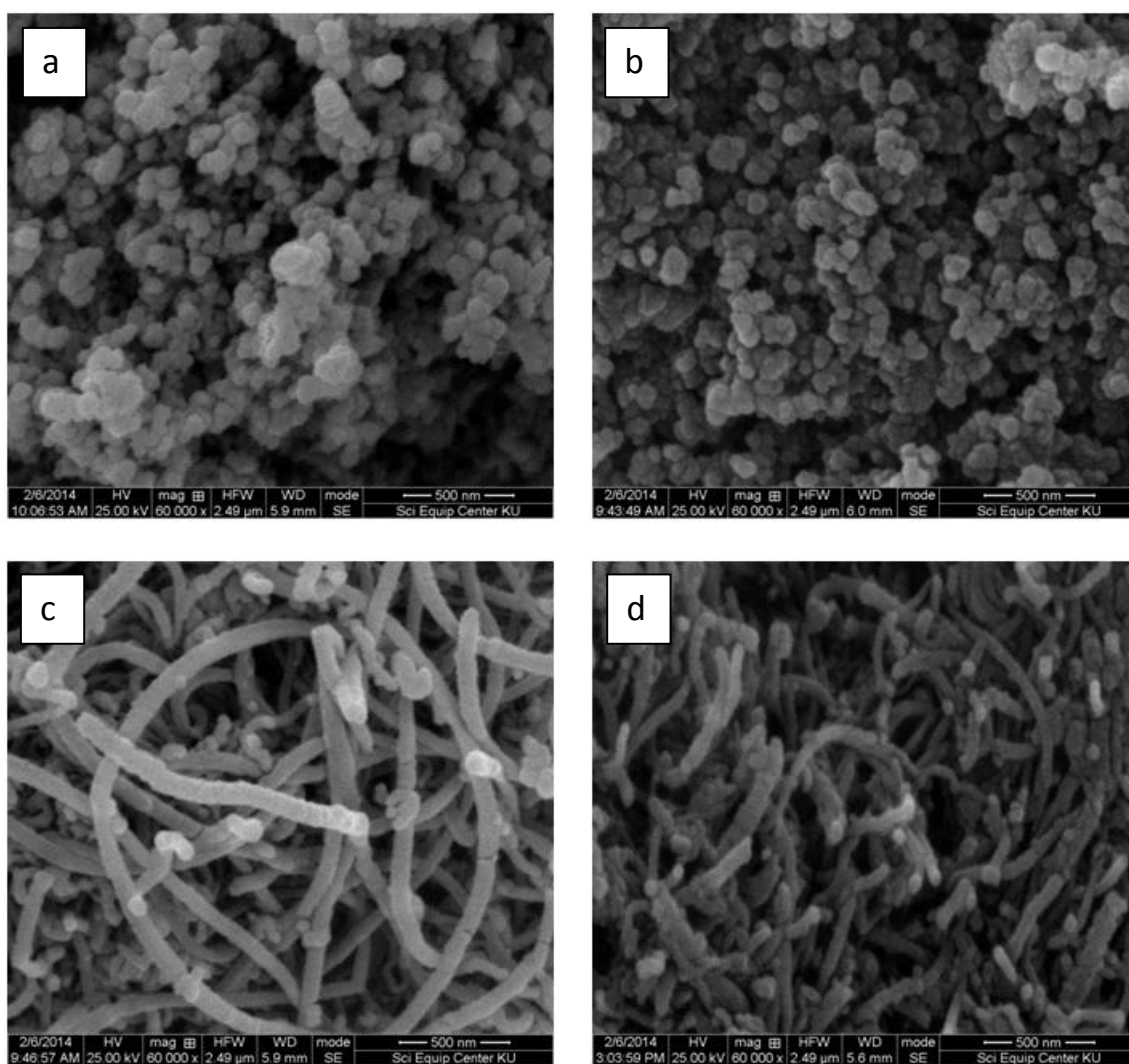
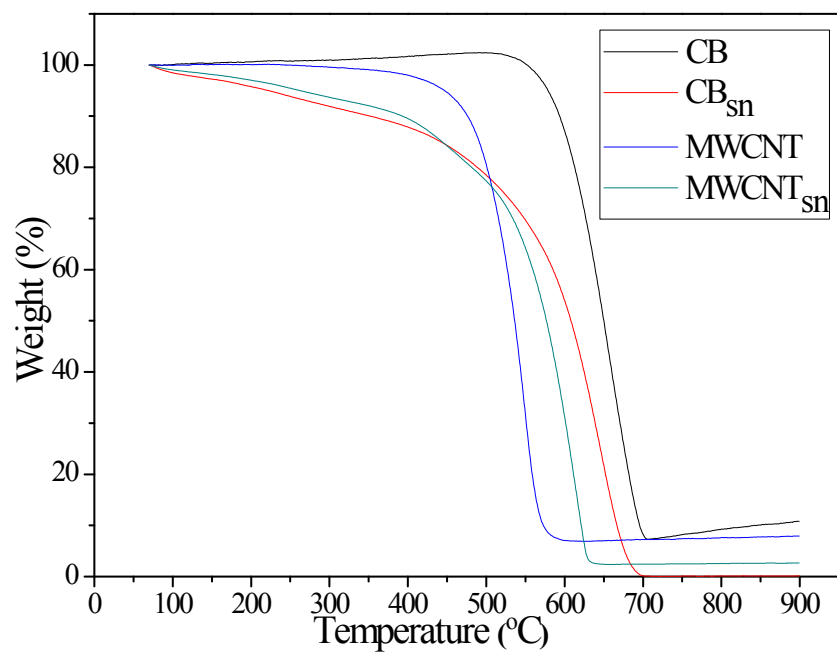


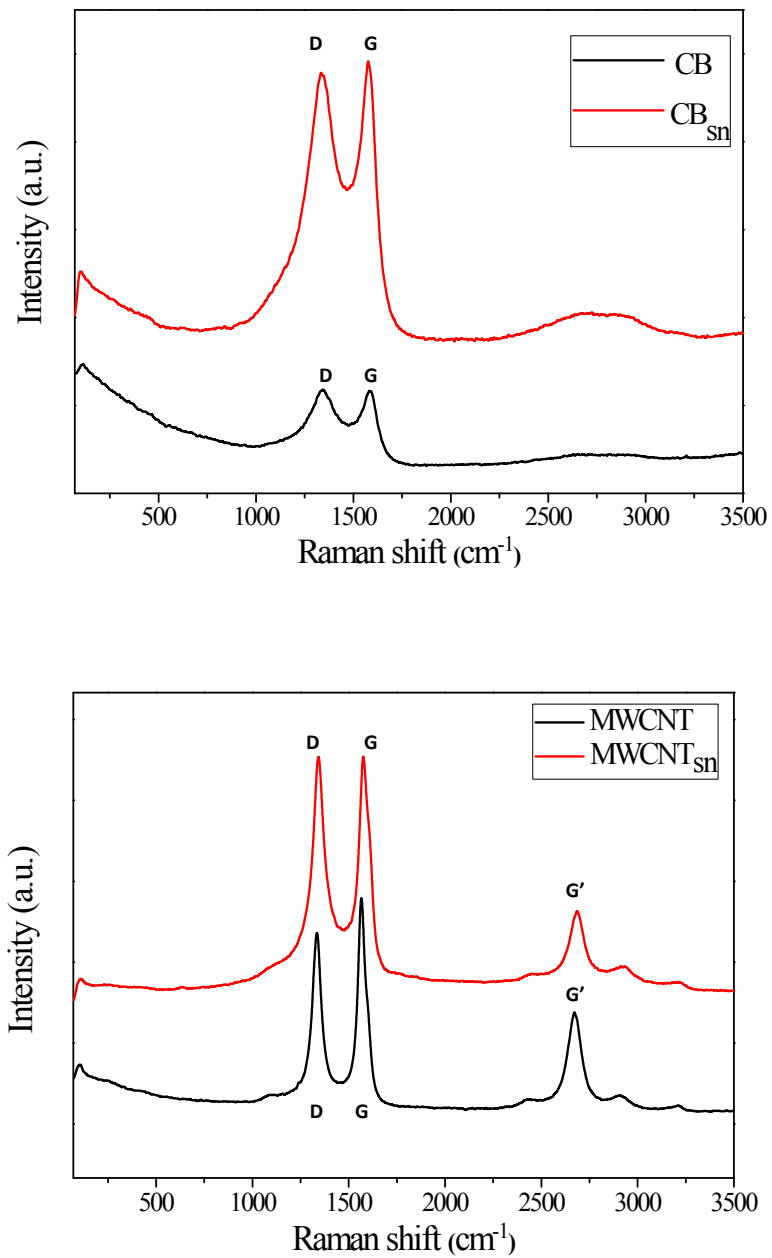
**Supporting Figures and Tables**



**Fig. S1** SEM image ( $\times 60,000$ ) of (a) CB (b) CB<sub>sn</sub> (c) MWCNTs (d) MWCNT<sub>sn</sub>.



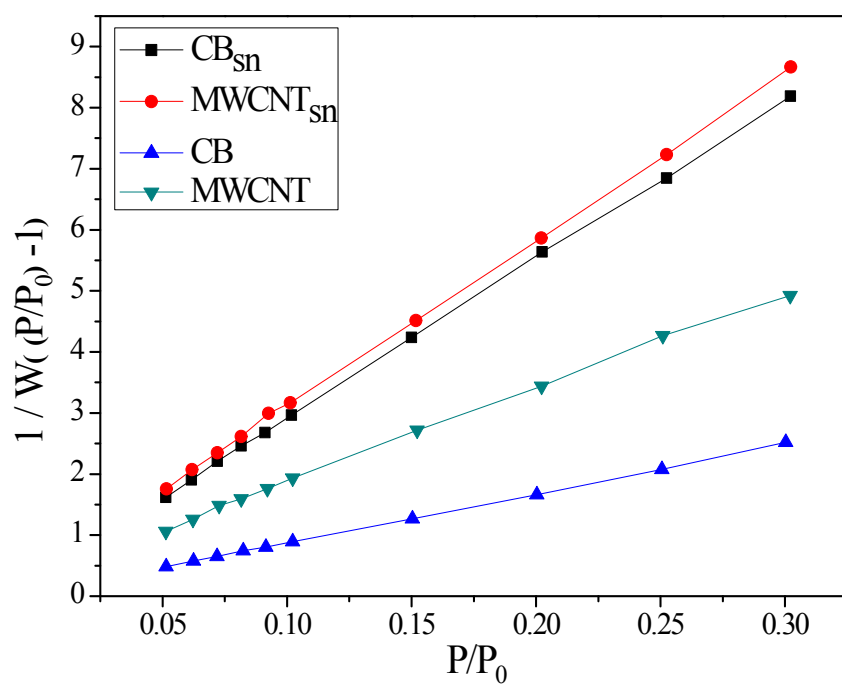
**Fig. S2** TGA thermograms obtained from thermal decomposition of different carbon supports.



**Fig. S3** The Raman spectrum of CB compared to CB<sub>sn</sub> (top) and MWCNTs compared to MWCNT<sub>sn</sub> (bottom).

**Table SI** The  $I_D/I_G$  ratio of different carbon supports.

Support	$I_D/I_G$ ratio
CB	0.837
CB <sub>sn</sub>	0.828
MWCNT	0.803
MWCNT <sub>sn</sub>	0.970



**Fig. S4** BET plots of different carbon supports.

**Table SII** BET surface area ( $S_{\text{BET}}$ ), average pore size and total pore volume of different carbon supports.

Type of supports	$S_{\text{BET}}$ ( $\text{m}^2/\text{g}$ )	Average pore size (nm)	Total pore volume ( $\text{cm}^3/\text{g}$ )
CB	427.40	12.28	1.31
MWCNT	221.00	27.33	1.51
CB <sub>sn</sub>	132.10	16.14	0.53
MWCNT <sub>sn</sub>	126.00	11.92	0.38