

Supporting Information

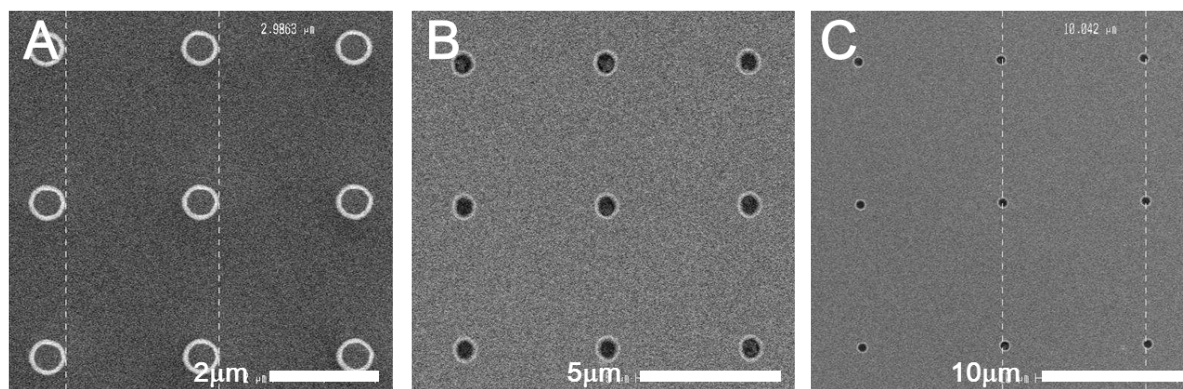


Figure S1. SEM images of top view of hole array on a patterned silicon wafer surface. The nano-holes were (A) 3 μm, (B) 5 μm and (C) 10 μm center-to-center distance with 1 μm height and 500 nm diameter.

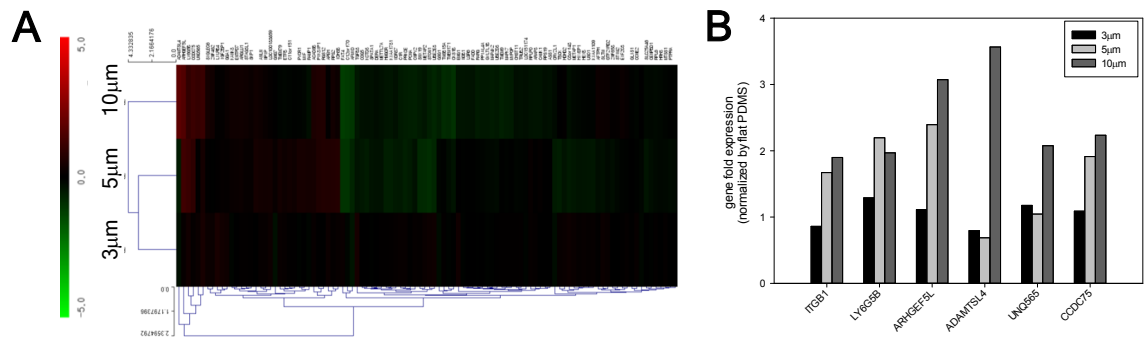


Figure S2. (A) Heat maps and hierarchical clustering of significant genes filtered by focal adhesion molecules. (B) Gene fold expression of focal adhesion molecules.

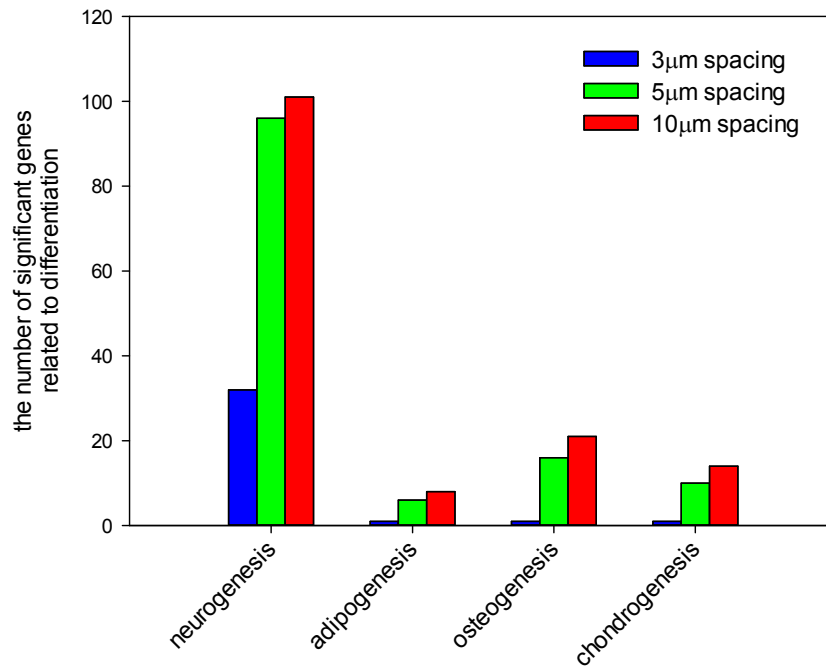


Figure S3. The number of significant genes related to differentiation classified differential lineage based on the microarray result.

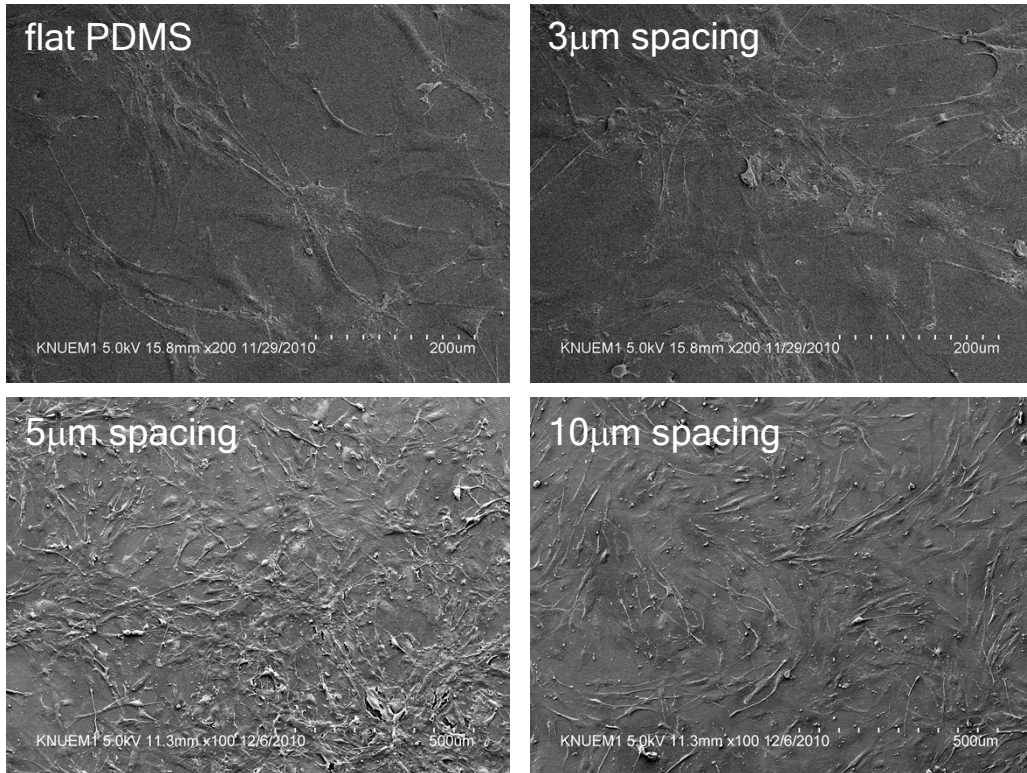


Figure S4. SEM images of ADSC cultivated on the various surfaces for 7 days.

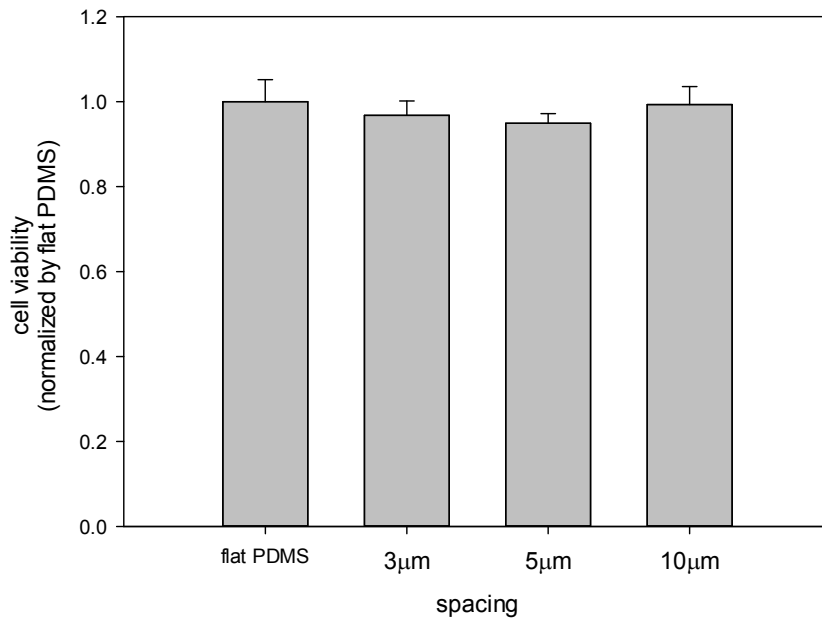


Figure S5. Cell viability of ADSCs on the PDMS pillar arrays with respect to flat PDMS surfaces. All data are statistically significant ($p < 0.05$) by one-way ANOVA.