

1 Supporting Information

2

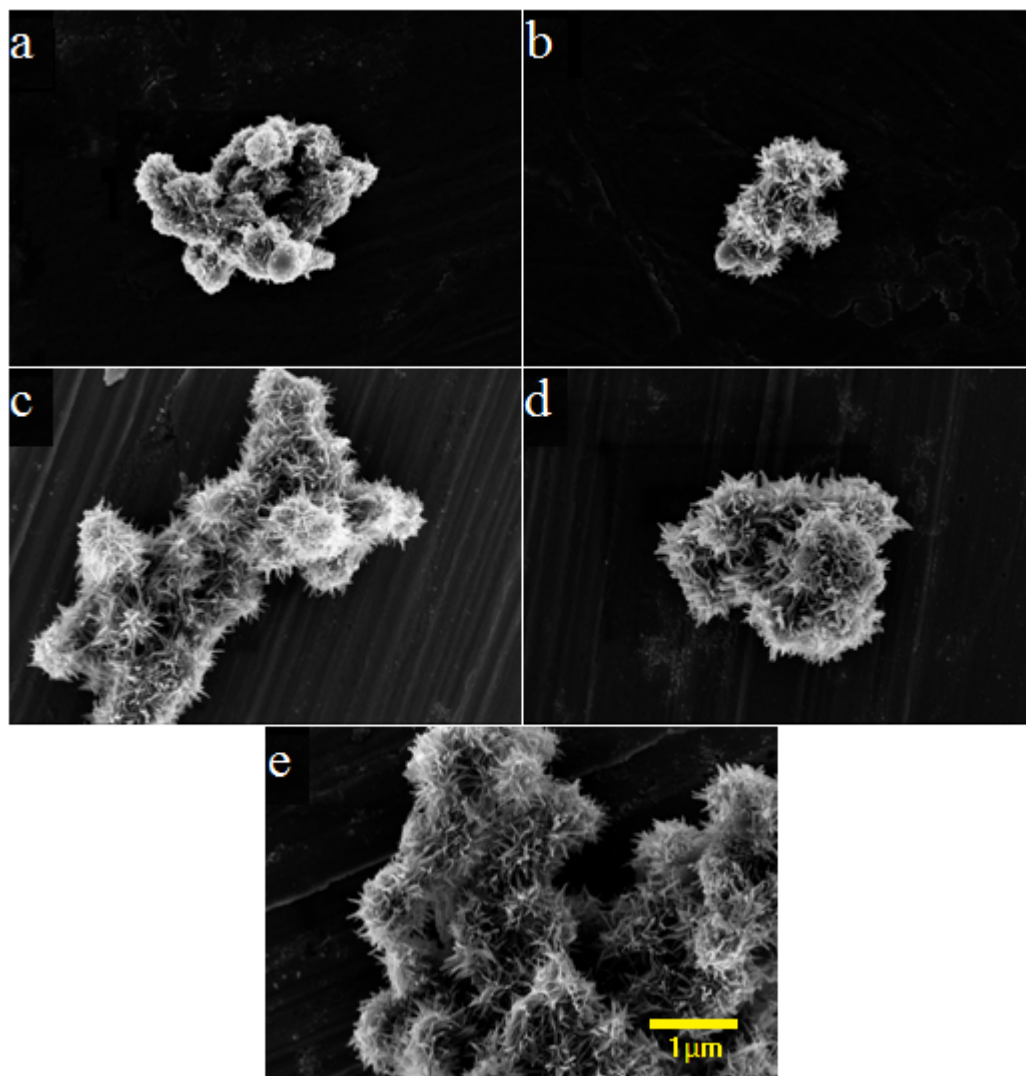


Figure S1 Electron microscopy images: (a) – (e) SEM of the MSST with different durations of solvothermal process

3

4

5 Nitrogen adsorption measurements were carried on the MSST and P25 with Micromeritics ASAP
6 2020 analyzer. The nitrogen adsorption isotherm is shown in figure S2. BET specific surface areas
7 were calculated in the relative pressure range of 0.066 – 0.2 and that of MSST and P25 were
8 determined to be 77.3 and 51.9 m²/g, respectively.

9

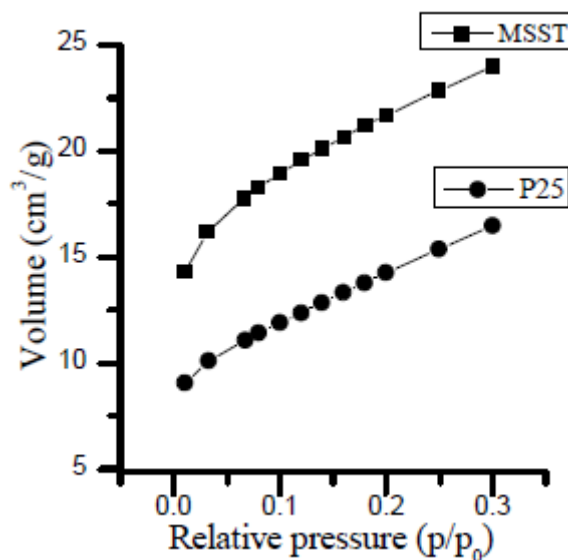


Figure S2 Nitrogen adsorption isotherms of MSST and P25 at 77K

10

11

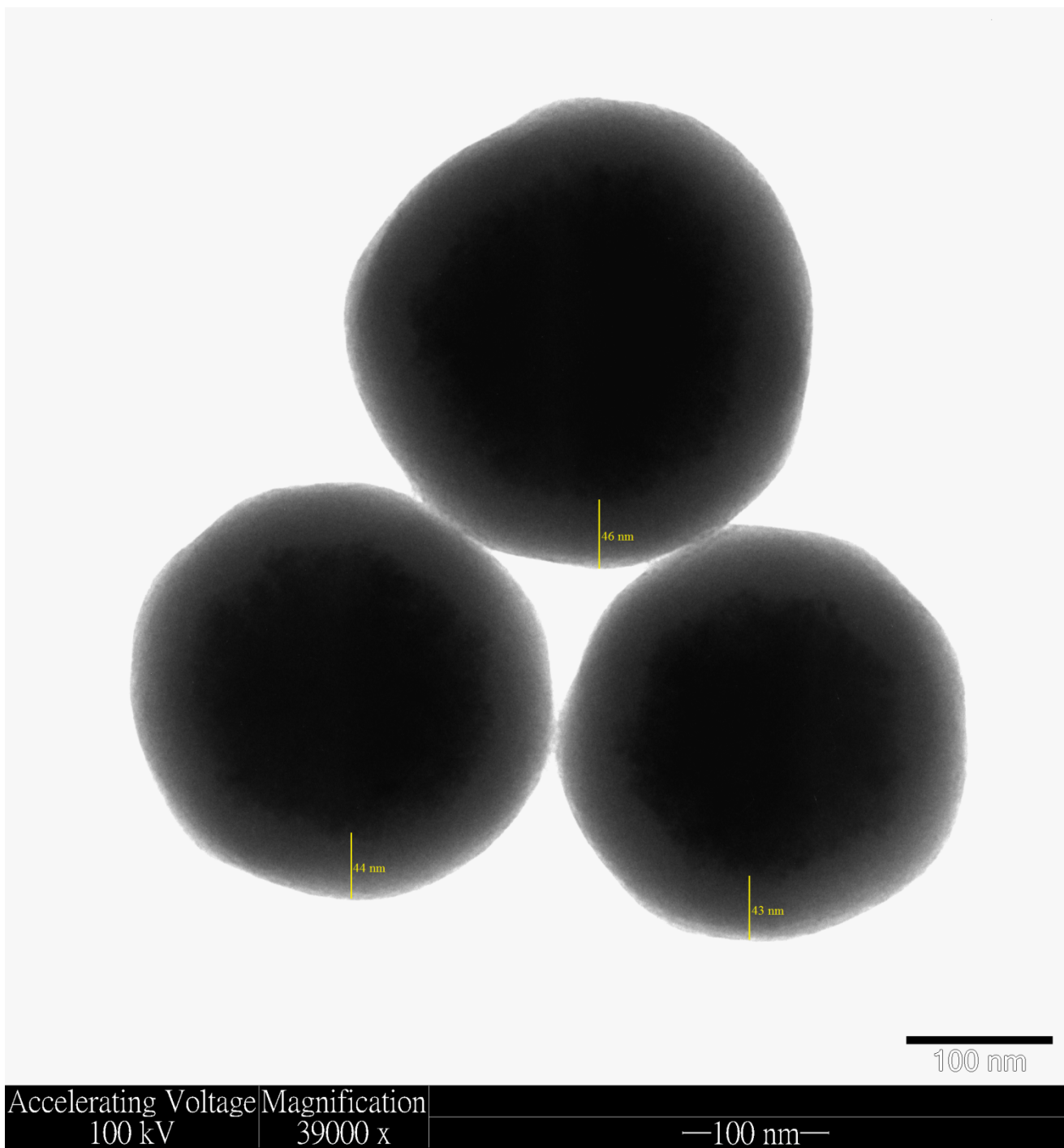


Figure S3 TEM image of the Fe₃O₄ @ SiO₂ showing the thickness of SiO₂ layer

12

13