

Electronic Supplementary Information (ESI)

ESI Videos

ESI Video 1 An Au-Fe/Ni nanomotor rotate on its axis in a mixed fuel containing H_2O_2 and N_2H_4 .

ESI Video 1' The playback speed of ESI Video 1 is about twenty times slower.

ESI Video 2 The flat rotation of an individual Fe/Ni nanomotor in a solution composed of H_2O_2 and N_2H_4 .

ESI Video 2' The playback speed of ESI Video 2 is about twenty times slower.

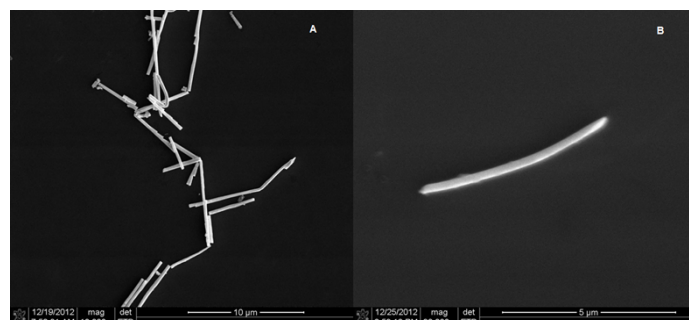
ESI Video 3 The spiral motion of an Au-Fe/Ni nanomotor in a solution composed of H_2O_2 and N_2H_4 .

ESI Video 3' The playback speed of ESI Video 3 is forty times slower.

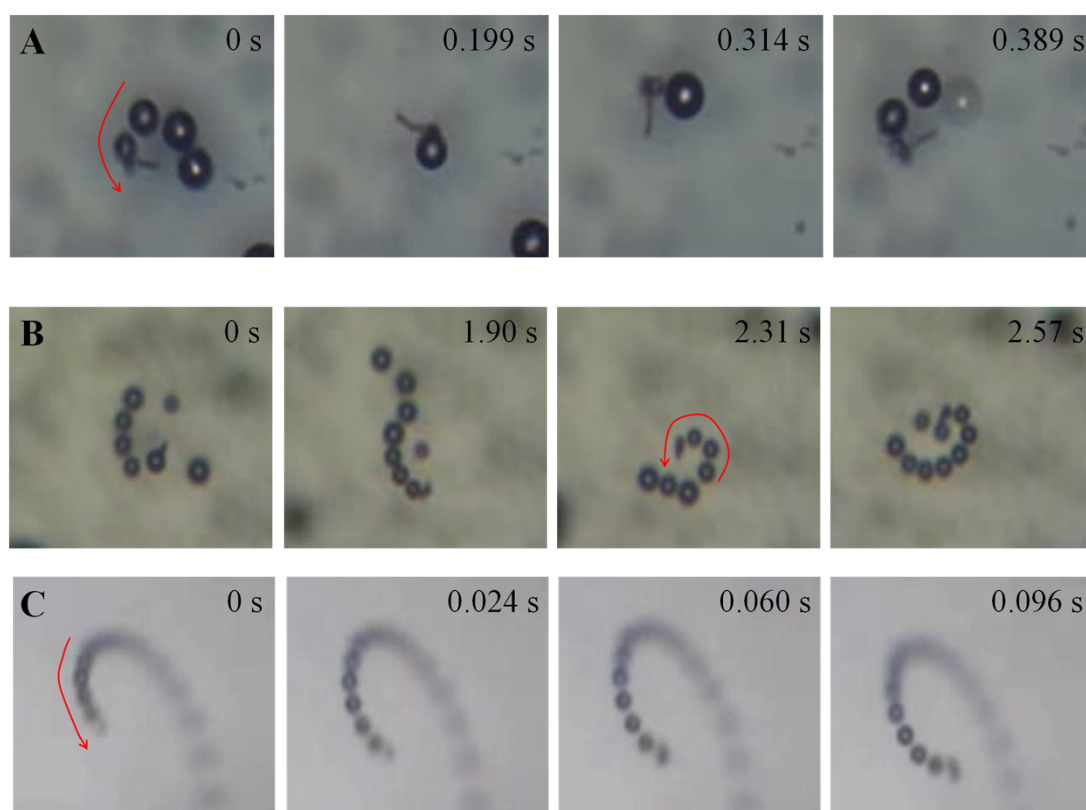
ESI Video 4 The movement of a rodlike aggregation containing some particles in a solution composed of H_2O_2 and N_2H_4 .

ESI Video 5 The motion of a disc-shaped aggregation including some particles in a solution composed of H_2O_2 and N_2H_4 .

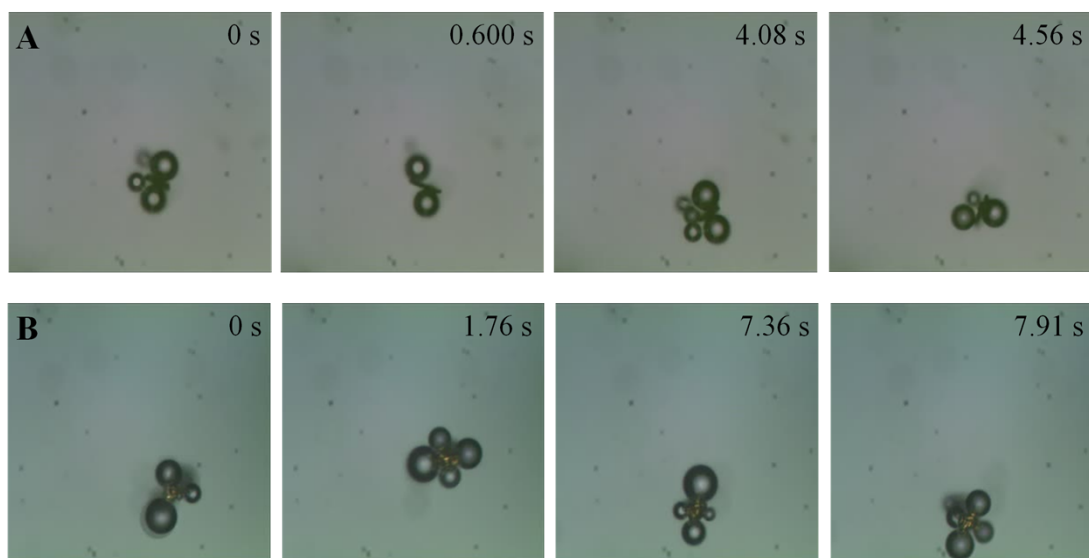
ESI Figures



ESI Fig. 1 SEM images of Au-Fe/Ni nanomotors. Scale bars indicate 10 μm (A) and 5 μm (B).



ESI Fig. 2 Images to describe an individual nanomotor (A) rotation on its axis; (B) flat rotation; (C) spiral motion.



ESI Fig. 3 Images to describe the movement of (A) rodlike aggregation containing some particles; (B) disc-shaped aggregation including some particles