

Supporting Information

Fe_3C and Mn doped Fe_3C Nanoparticles: Synthesis, Morphology and Magnetic properties

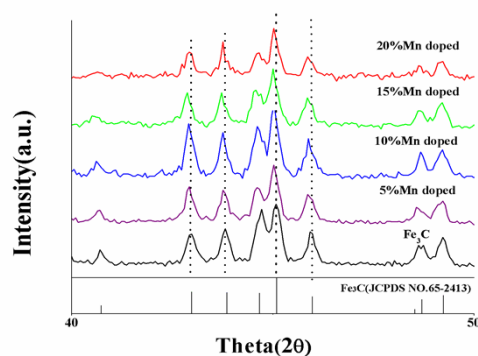


Fig.S1. Magnified XRD patterns of Fe_3C and Mn doped Fe_3C NPs (40-50 degree).

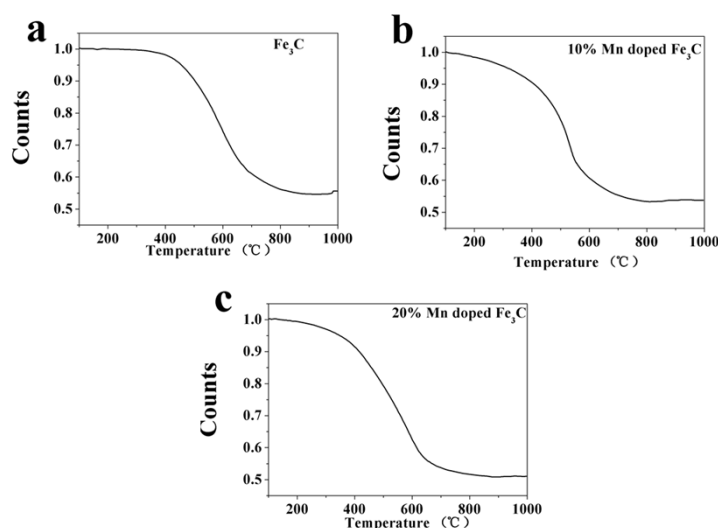


Fig.S2. TGA curves of Fe_3C , 10% and 20% Mn doped Fe_3C measured from 100 to 1000 °C in atmospheric air.

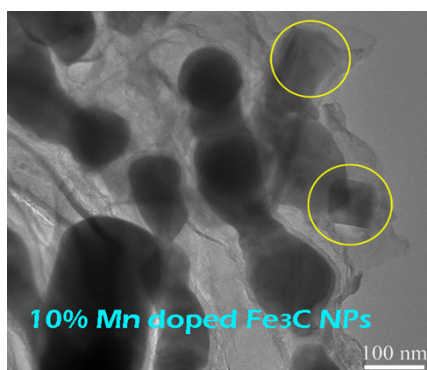


Fig.S3. TEM image of 10% Mn doped Fe_3C NPs.