

Electronic supplementary information

Mono-and Tetra-nuclear copper complexes bearing bis(imino)phenoxide derived ligands

Xue Wang,^a Qe-King Zhao,^a Mark R.J. Elsegood,^b Timothy J. Prior,^c Xiaoming Liu,^d Wu Li,^d Sergio Sanz,^e Euan K. Brechin,^e Carl Redshaw,^{*a,c}

^a College of Chemistry and Materials Science, *Sichuan Normal University, Chengdu, 610066, China.*

^b *Chemistry Department, Loughborough University, Loughborough, Leicestershire, LE11 3TU, U.K.*

^c *Department of Chemistry, The University of Hull, Cottingham Rd, Hull, HU6 7RX, U.K. Email: C.Redshaw@hull.ac.uk*

^d *College of Biology, Chemical Science & Engineering, Jiaying University, Jiaying 314001, China.*

^e *EaStCHEM School of Chemistry, University of Edinburgh, David Brewster Road, Edinburgh, EH9 3FJ, Scotland.*

Contents

Pages 2 and 3.

Figs S1 – S3: ESR spectra for **2a** (room temp) and **2c** (room temp and low temperature).

Page 4

Figs. S4 and S5: MALDI-TOF spectra of PCL using **2a** and **2b**.

Page 5.

Fig. S6: ¹H NMR of PCL using **2b** (run 7, Table 1)

Page 6.

Figs. S7 – S8: The calibration curves of benzene and phenol (Y-ordinate: the ratio of the peak area of the analyte over that of the internal standard; X-ordinate: the mass of the analyte).

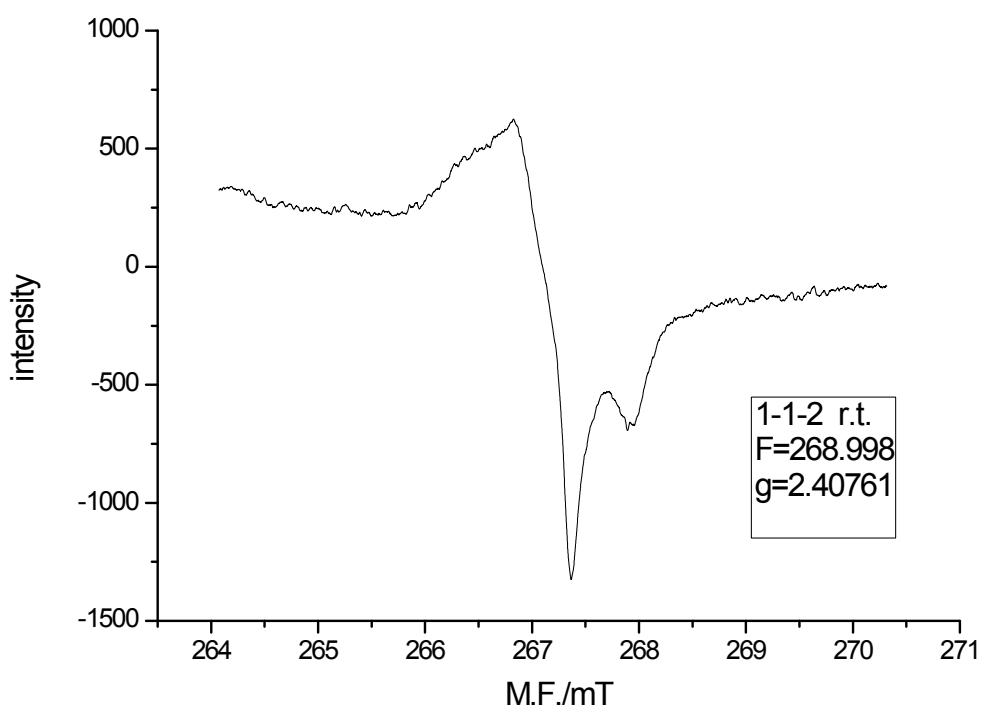


Figure S1. Room temperature ESR of **2a**.

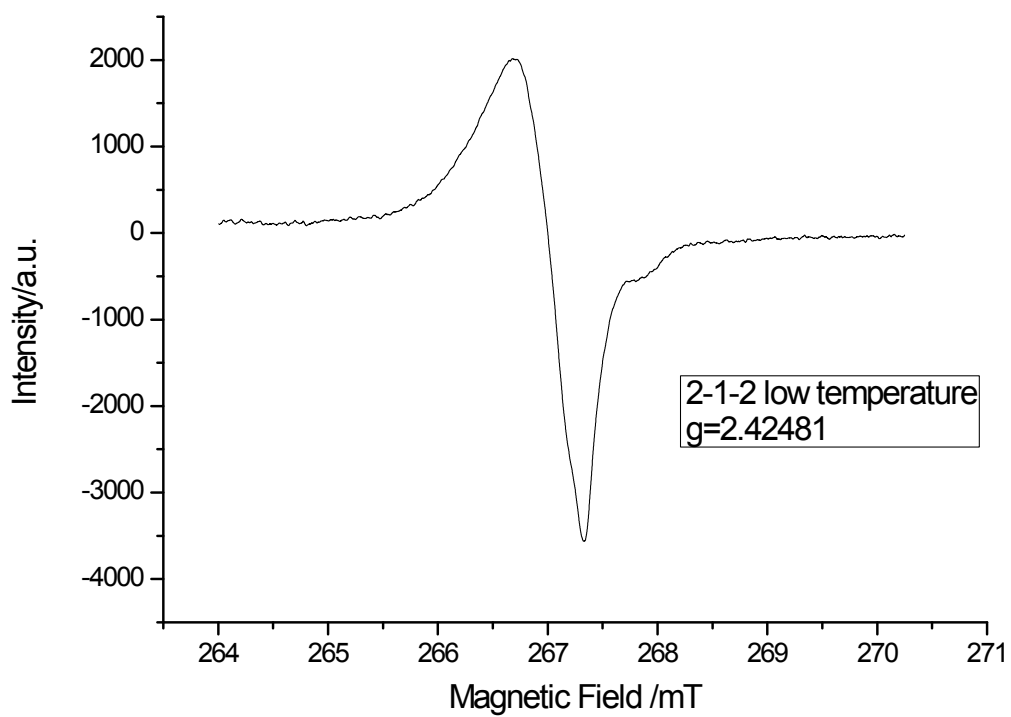


Figure S2. Low temperature (103 K) ESR of **2c**.

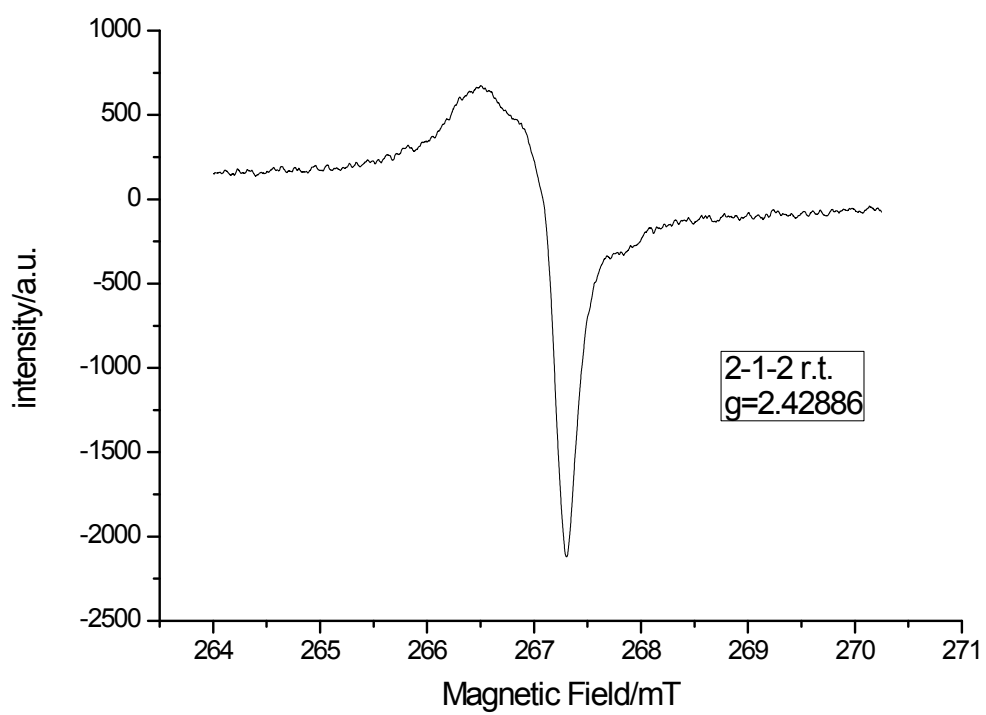


Figure S3. Room temperature ESR of **2c**.

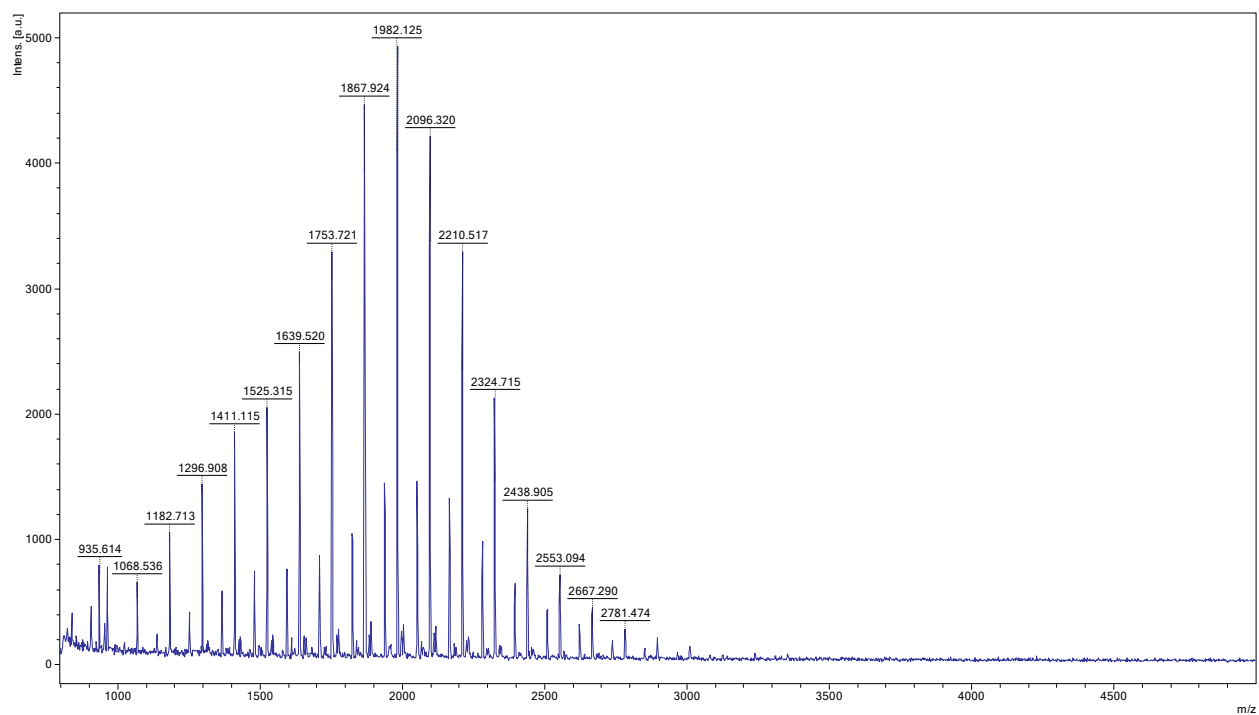


Figure S4. MALDI-TOF spectrum of the PCL using **2a** (from run 5, Table 1).

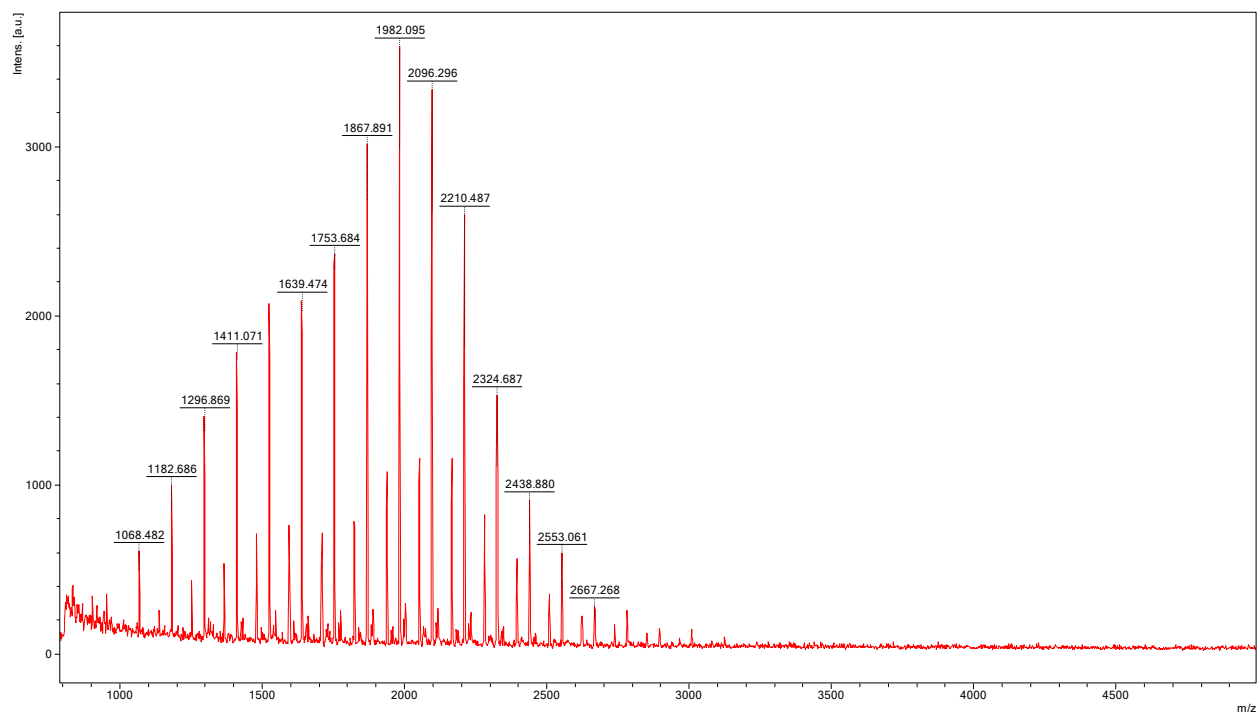


Figure S5. MALDI-TOF spectrum of the PCL using **2b** (from run 7, Table 1).

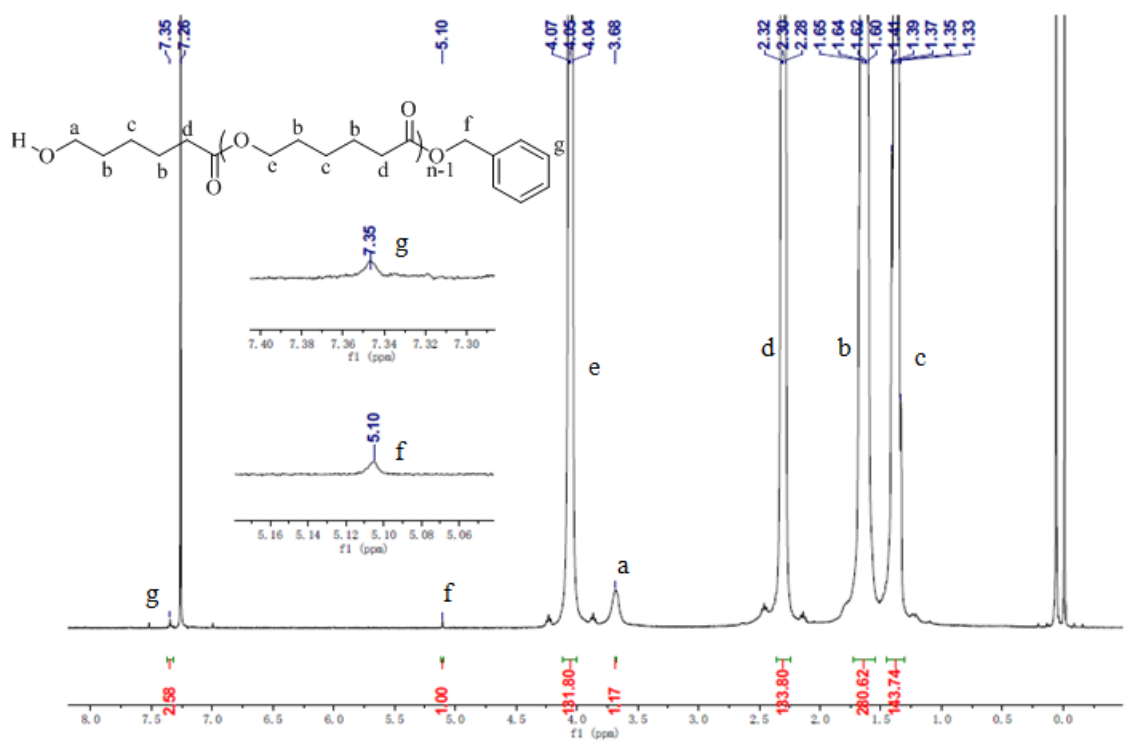


Figure S6. ¹H NMR spectrum (CDCl₃, 400 MHz) of the PCL using **2b** (from run 7, Table 1).

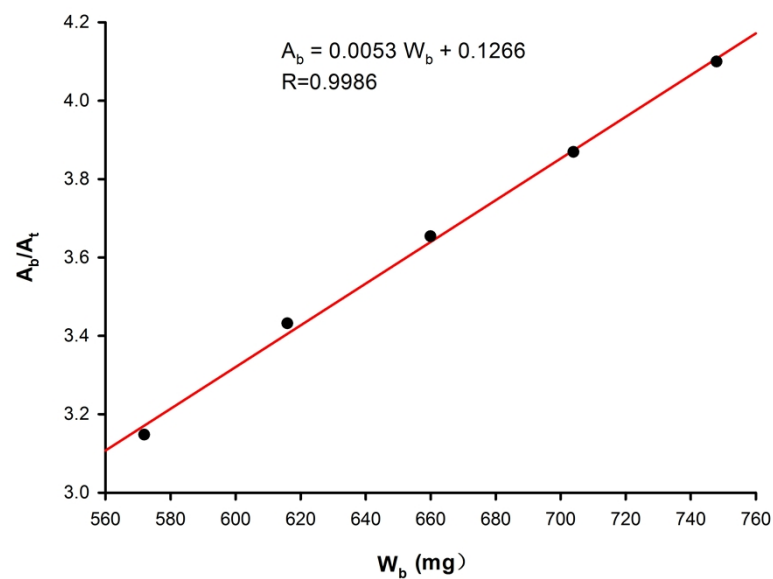


Figure S7. The calibration curve of benzene (Y-ordinate: the ratio of the peak area of the analyte over that of the internal standard; X-ordinate: the mass of the analyte).

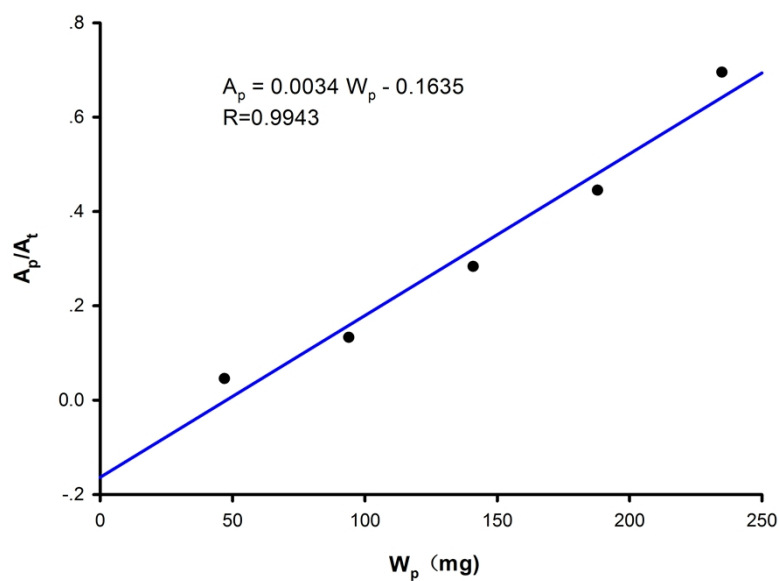


Figure S8. The calibration curve of phenol (Y-ordinate: the ratio of the peak area of the analyte over that of the internal standard; X-ordinate: the mass of the analyte).