

Supporting Information

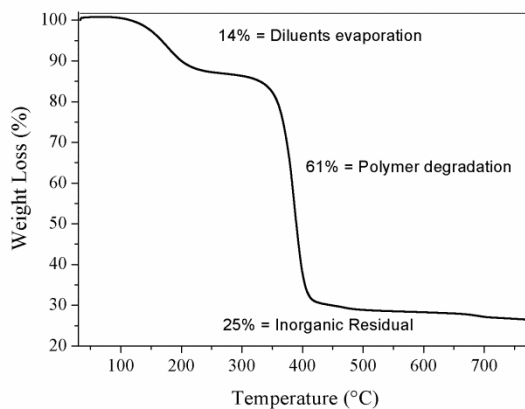


Fig. S1: TGA of the commercial tube colour used for the preparation of the black painting model.

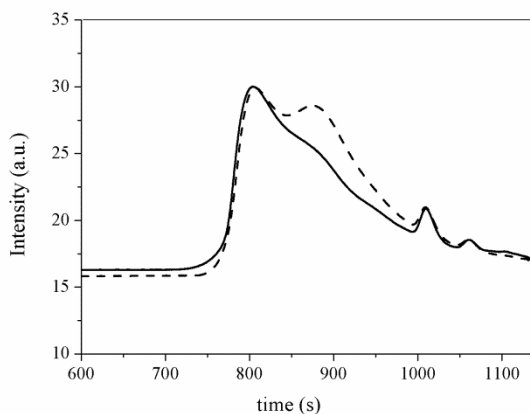


Fig. S2: GPC analysis of the sample C0 before (dash line) and after (solid line) 44 hours of artificial aging

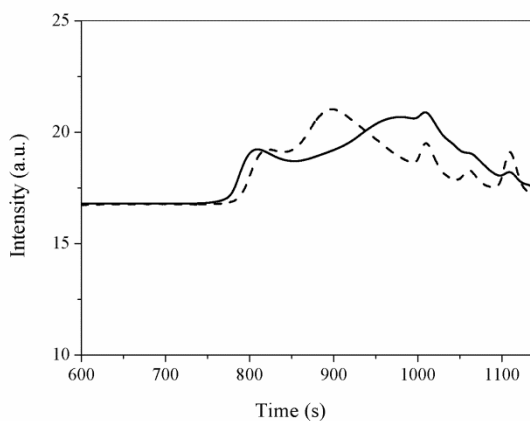


Fig. S3: GPC analysis of the sample C44 before (dash line) and after (solid line) 44 hours of artificial aging.