

Electronic Supplementary Information for

Chromogenic 'naked eye' and fluorogenic 'turn on' sensor for mercury metal ion using thiophene based Schiff base

Divya Singhal, Neha Gupta, Ashok Kumar Singh*

Department of Chemistry, Indian Institute of Technology-Roorkee,
Roorkee-247667, India

*E-mail: akscyfcy@iitr.ernet.in

Table of Contents:

Fig. S1 UV-Vis spectra of of Probe 1.

Fig. S2 UVVis spectra of of Probe 2.

Fig. S3 ^1H NMR spectrum of Probe 1.

Fig. S4 ^{13}C NMR spectrum of Probe 1.

Fig. S5 ^1H NMR spectrum of Probe 2.

Fig. S6 ^{13}C NMR spectrum of Probe 2.

Fig. S7 MALDI-TOF positive ion mode mass spectrum of Probe 1 in presence Hg^{2+} ions using HABA matrix.

Fig. S8 Optimized structure of Probe 2 and HOMO-LUMO diagram.

Fig. S9 Cyclic voltammograms of Probe 2.

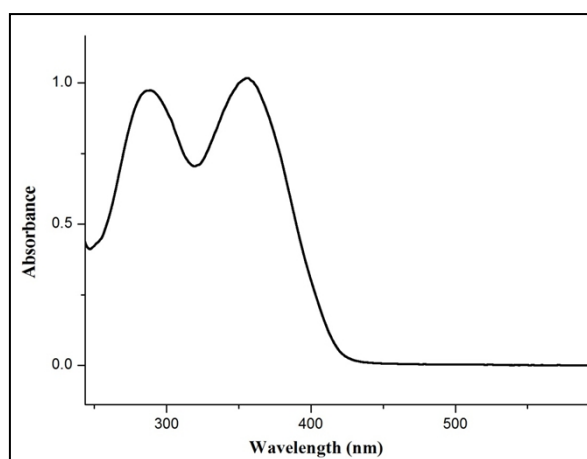


Fig.S1 UV-Vis spectra of of Probe 1.

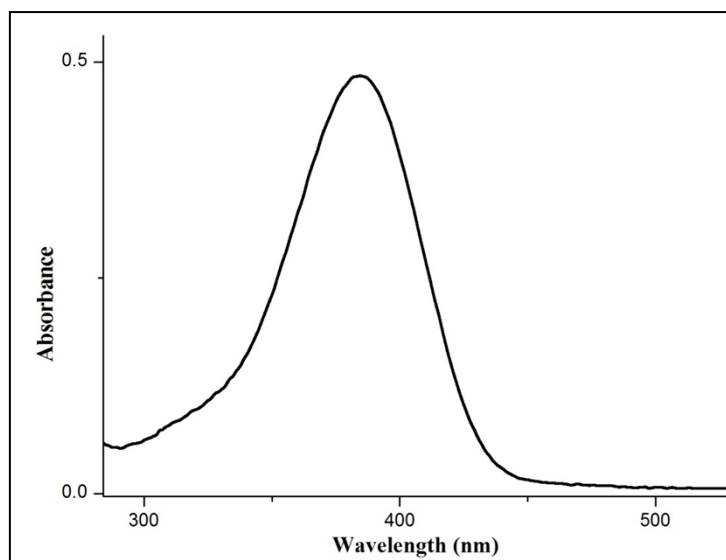


Fig. S2 UV-Vis spectra of of Probe 2.

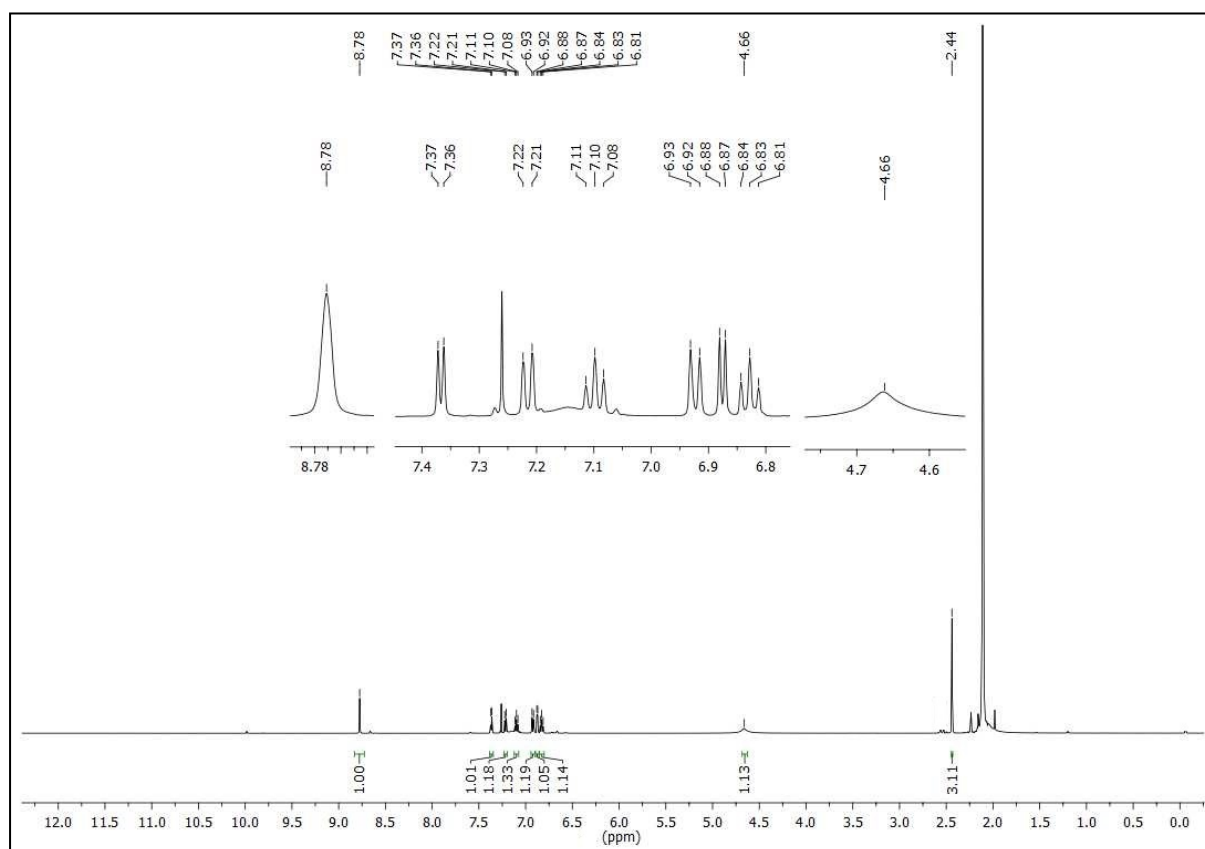


Fig.S3 ¹H NMR spectrum of Probe 1.

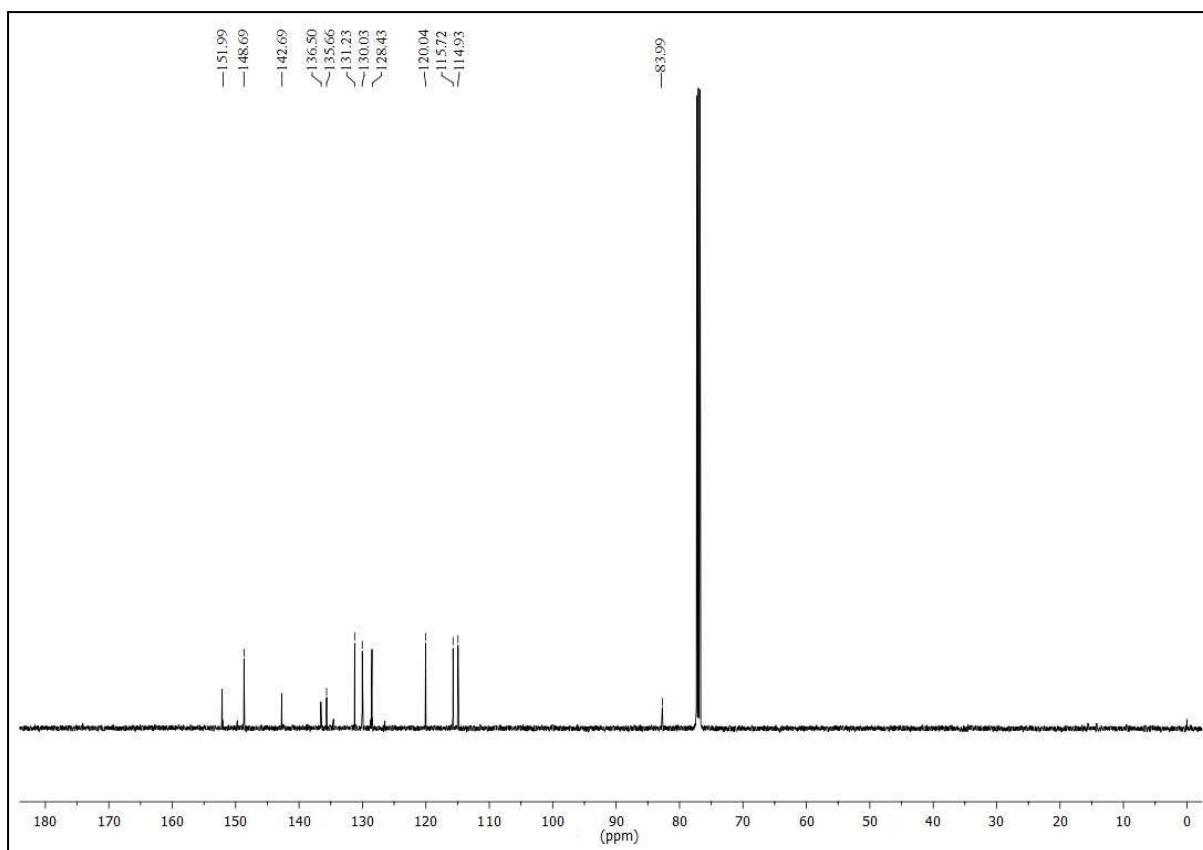


Fig. S4 ^{13}C NMR spectrum of Probe 1.

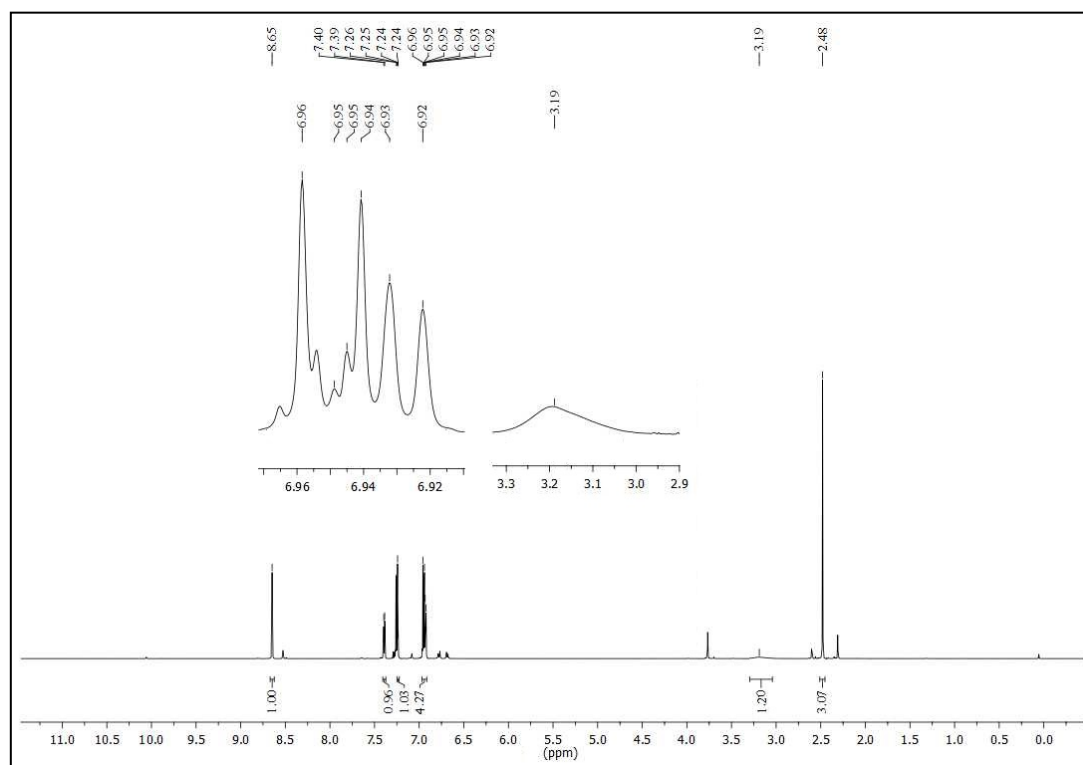


Fig. S5 ^1H NMR spectrum of Probe 2.

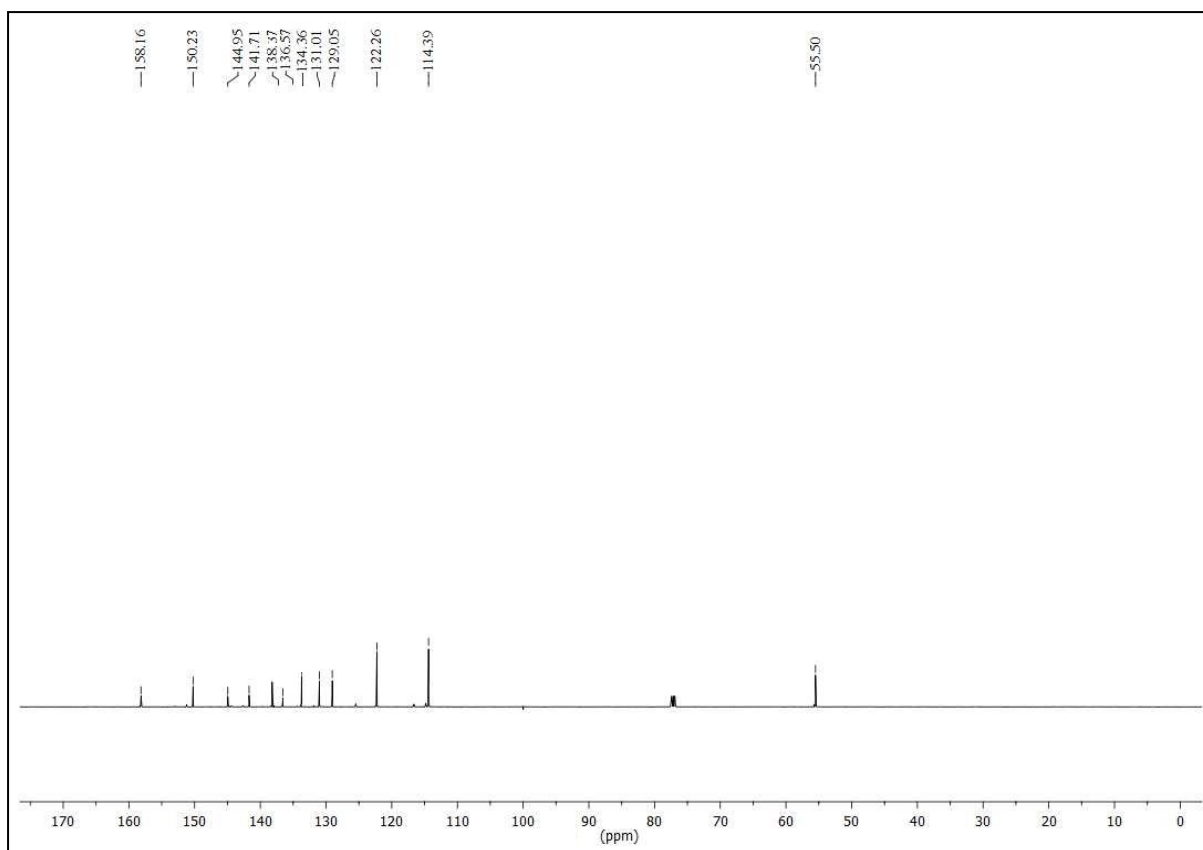


Fig. S6 ^{13}C NMR spectrum of Probe 2.

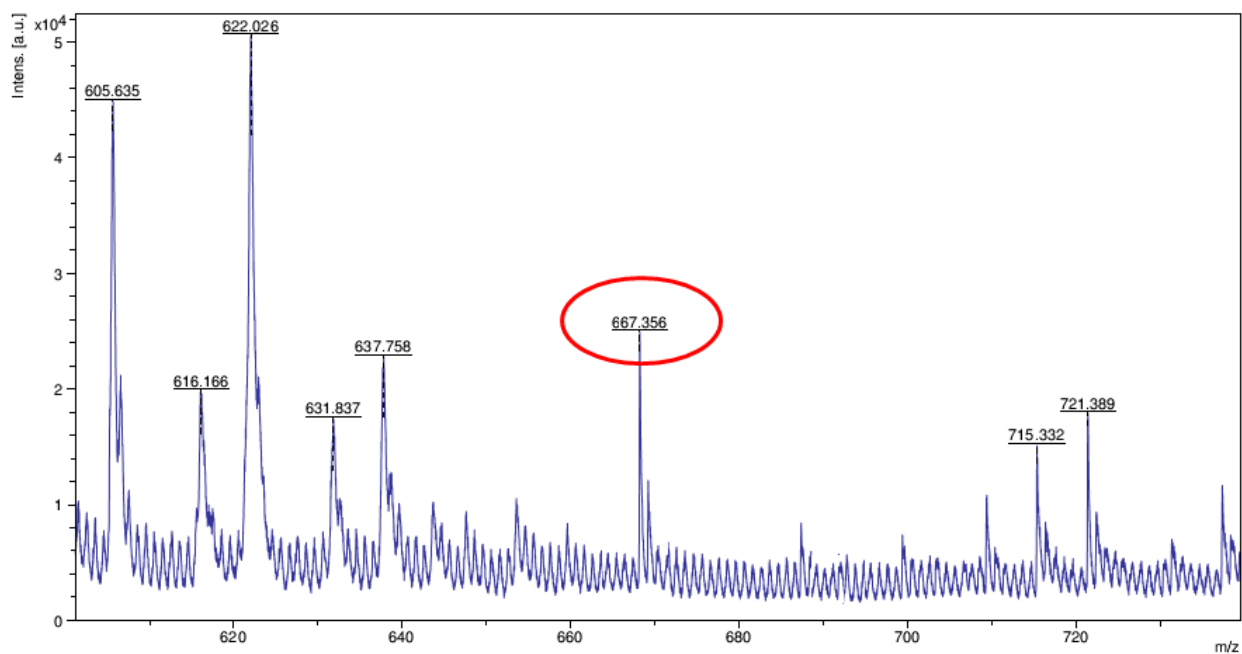


Fig. S7 MALDI-TOF positive ion mode mass spectrum of Probe 1 in presence Hg^{2+} ions using HABA matrix.

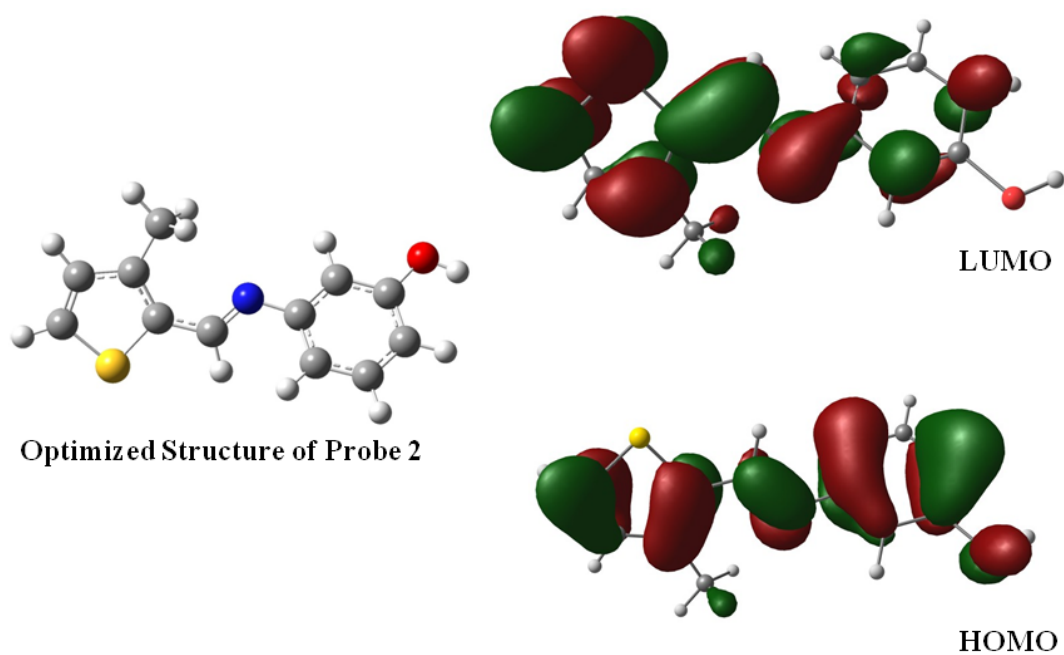


Fig. S8 Optimized structure of Probe 2 and HOMO-LUMO diagram.

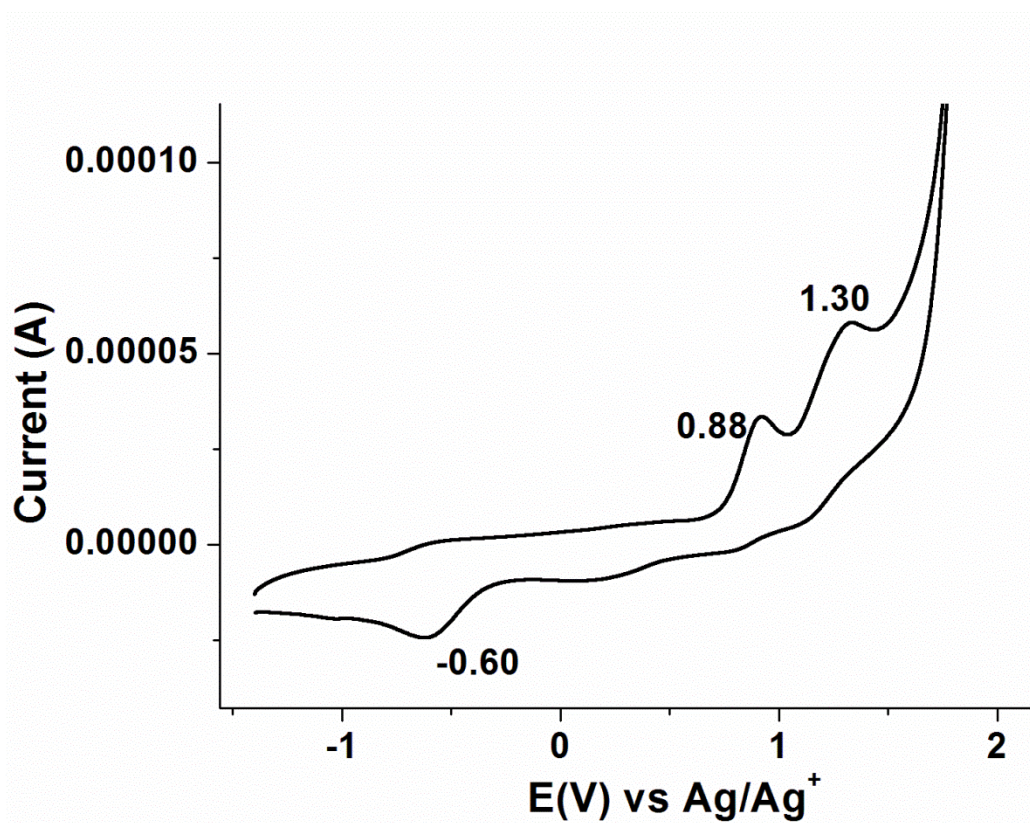


Fig. S9 Cyclic voltammograms of Probe 2.