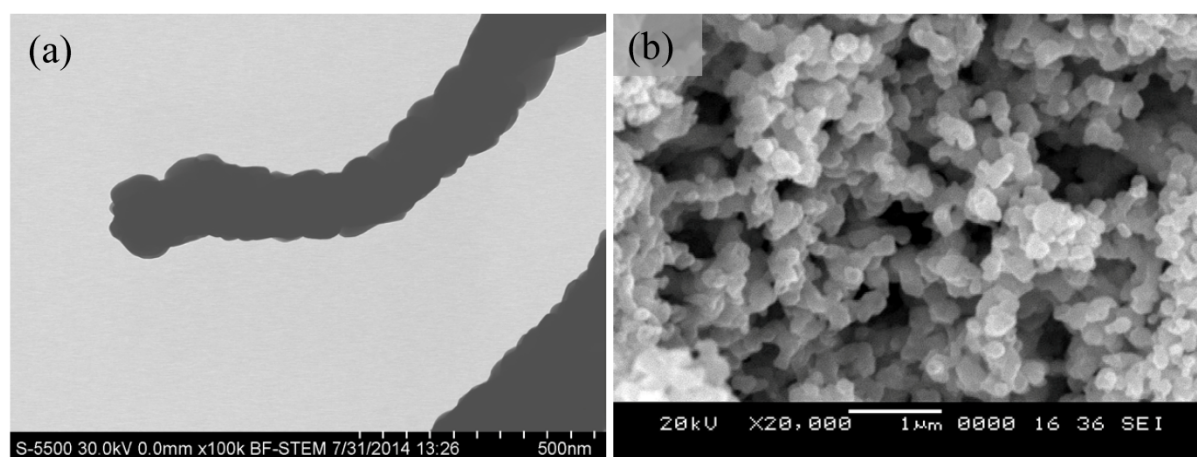


### Electronic supporting information

High resolution TEM image of CS600 single fiber is shown in Fig. S1a, which reveals the serrated edges of the fiber and each serration corresponds to a grain. The high resolution SEM image of CP600 series fibers (Fig. S1b) is also an evidence for the fragile nature of the fibers during ultra-sonication.



**Fig. S1** (a) High resolution TEM image of CS600 single fiber and (b) high resolution SEM image of the ultrasonicated CP600 series fibers.