

**Supporting Information:**

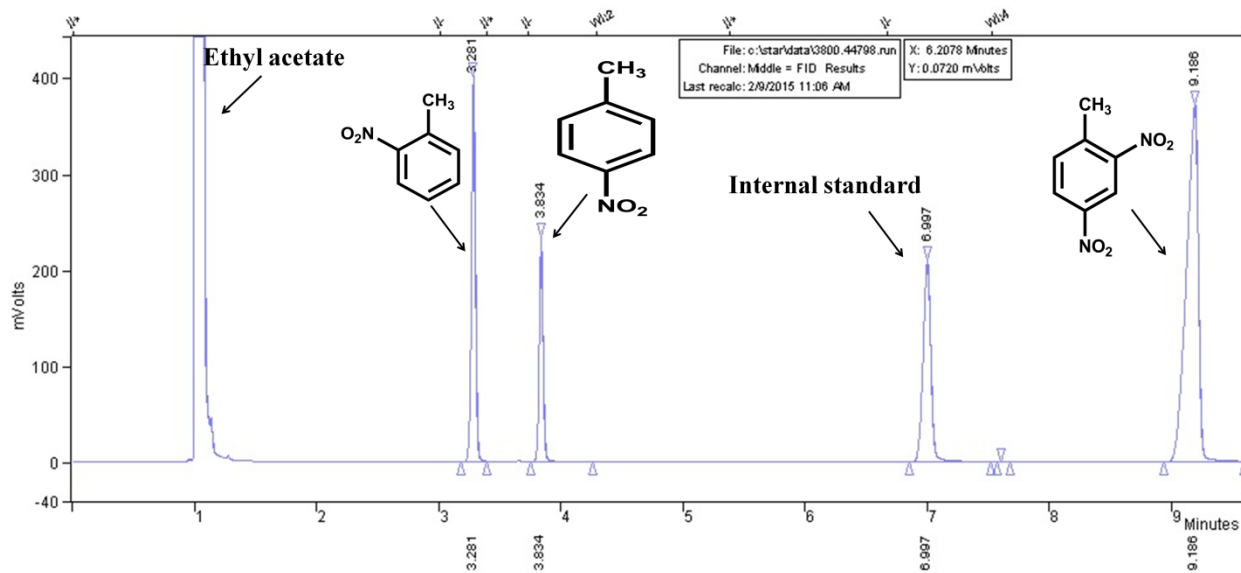
Copper-Cobalt Synergy in  $M_{1-x}M'_xFe_2O_4$  Spinel Ferrite as a Highly Efficient and Regioselective  
Nanocatalyst for Synthesis of 2,4-Dinitrotoluene

Reza Fareghi-Alamdari\*<sup>a</sup>, Farzad Zandi<sup>a</sup>, Mohammad Hossein Keshavarz<sup>b</sup>

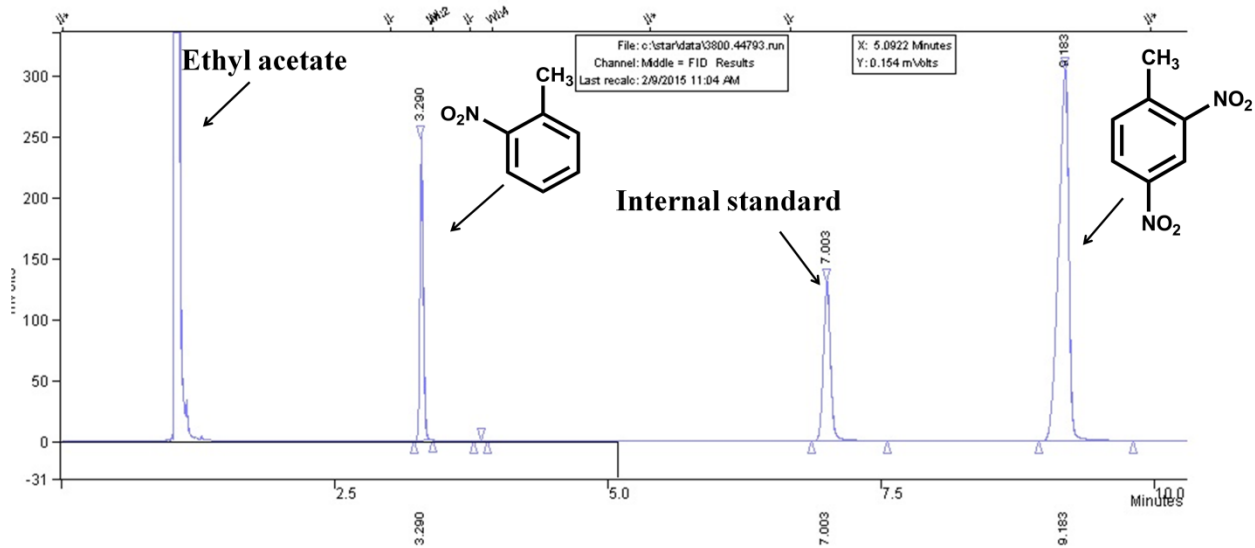
- a) College of Chemistry and Chemical Engineering, Malek-ashtar University of  
Technology, Tehran, 16765-3454, I. R. Iran
- b) Department of Chemistry, Malek-ashtar University of Technology, Shahin-shahr, P.O.  
Box 83145-115, Islamic Republic of Iran

Email: reza\_fareghi@yahoo.com

**Selected example of GC chromatogram:**



**Figure S1.** GC chromatogram (in manuscript, Figure 7, blue legend)



**Figure S2.** GC chromatogram (in manuscript Figure 7, green legend)

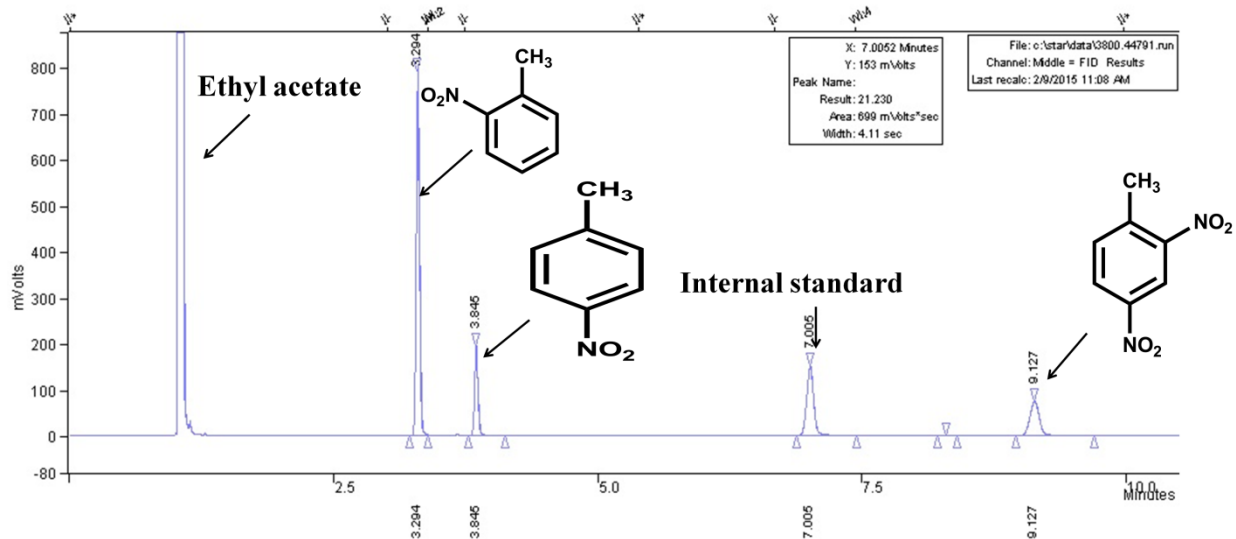


Figure S3. GC chromatogram (in manuscript Figure 7, black legend)

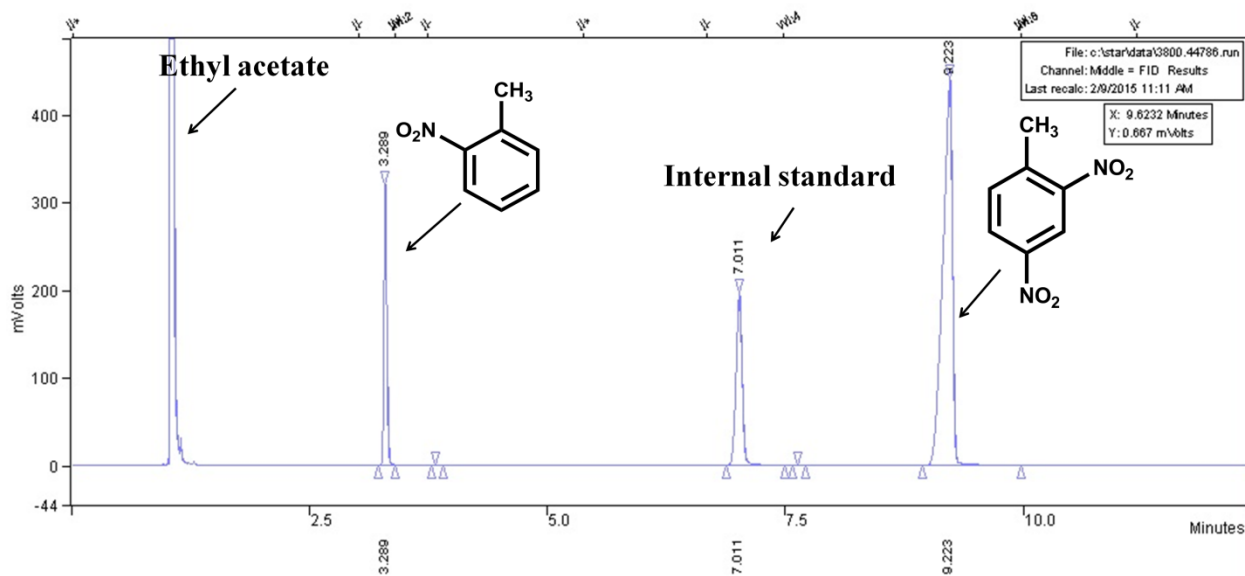


Figure S4. GC chromatogram (in manuscript Figure 9, blue legend)

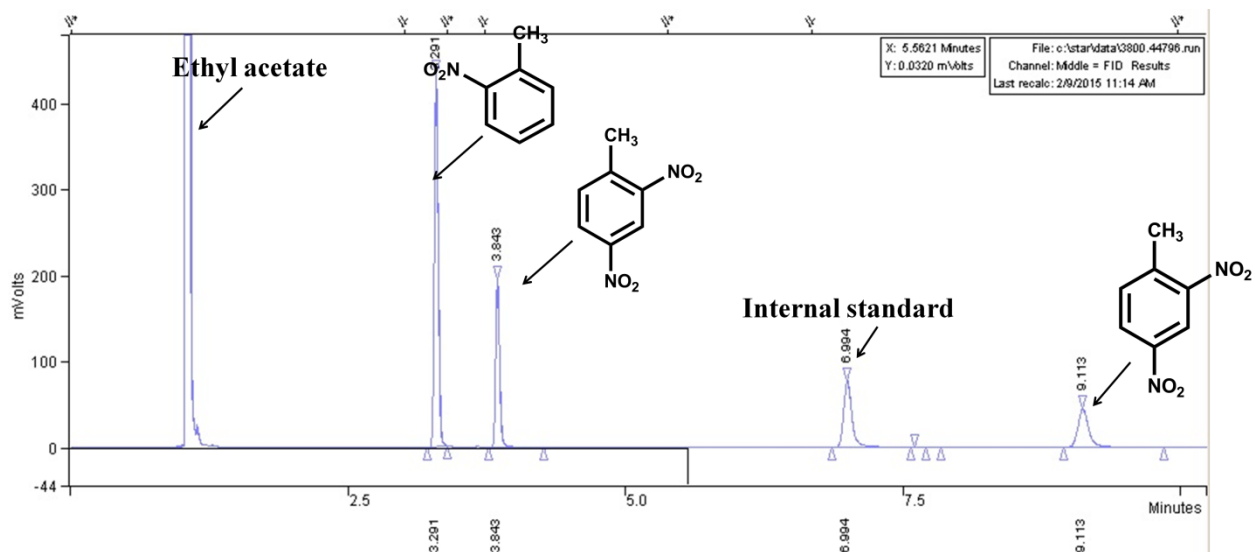


Figure S5. GC chromatogram (in manuscript Figure 9, green legend)

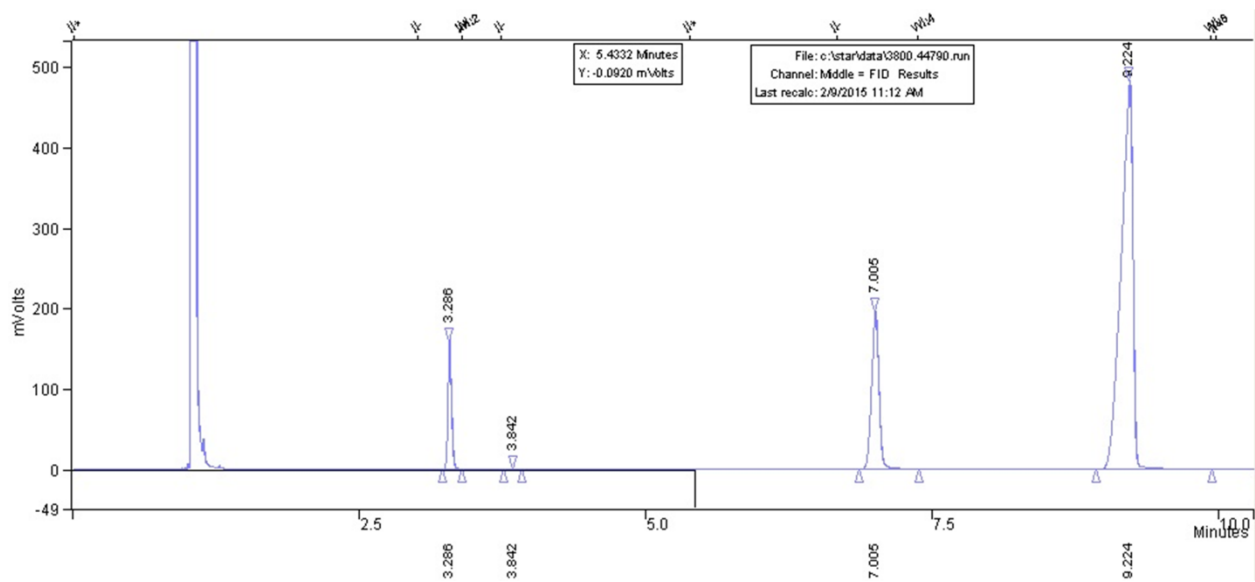


Figure S6. GC chromatogram (in manuscript Figure 9, ashy legend)

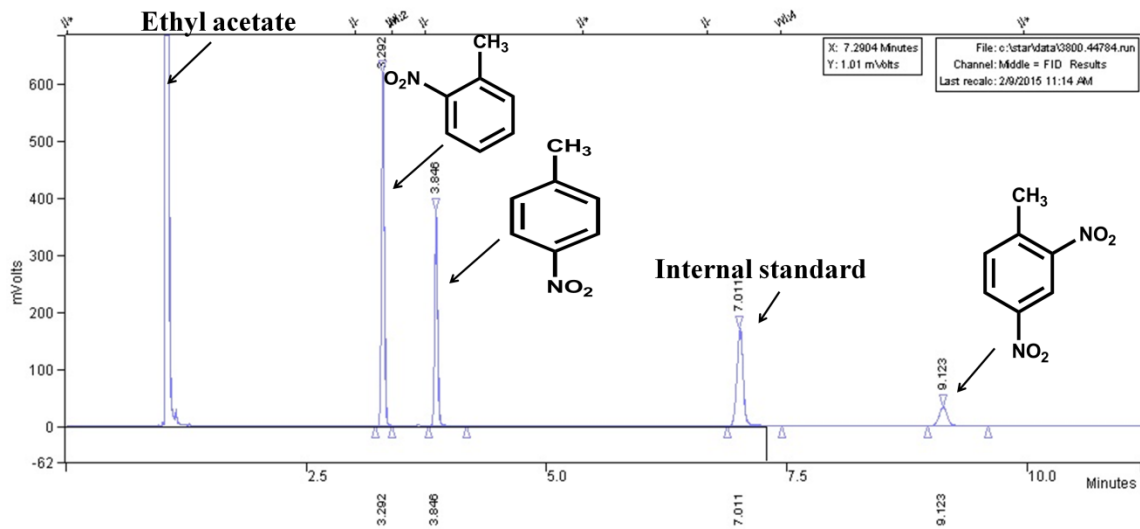


Figure S7. GC chromatogram (in manuscript Table 3, entry 1)

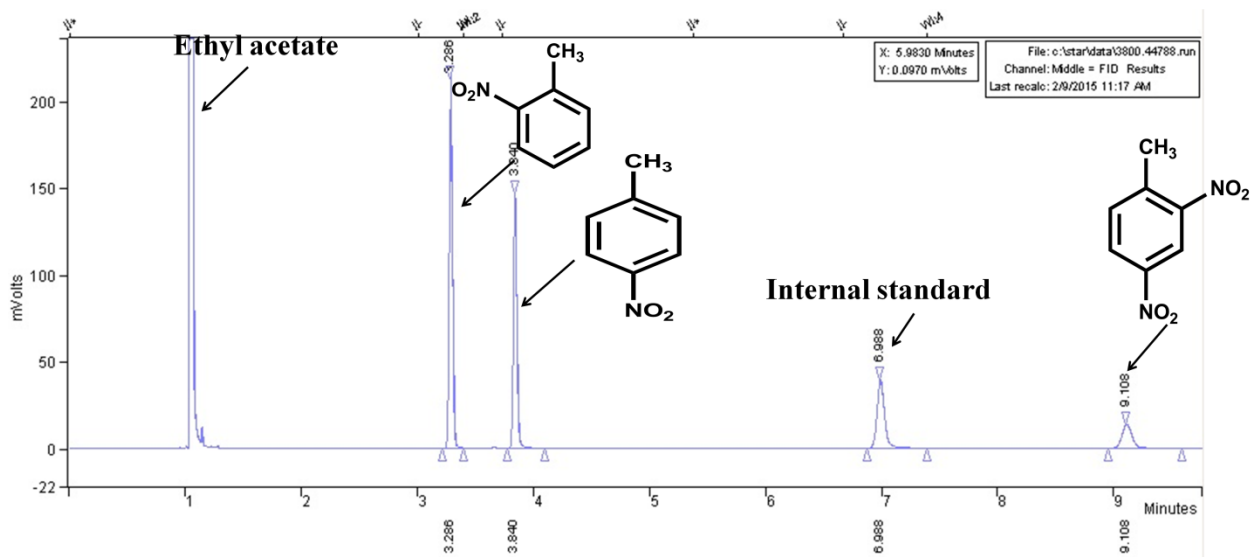


Figure S8. GC chromatogram (in manuscript Table 3, entry 5)

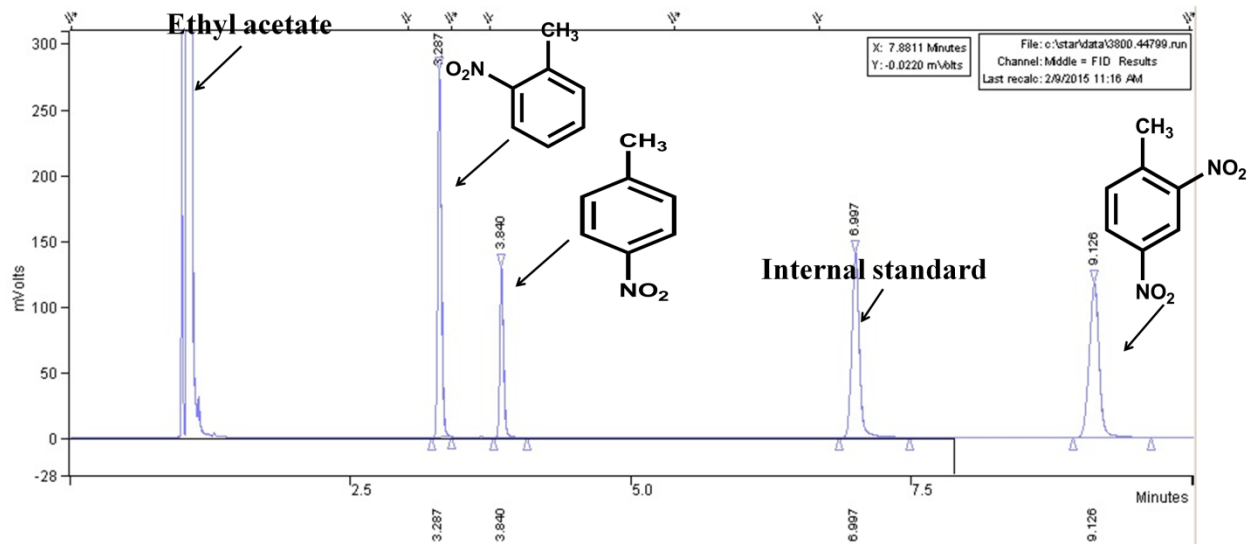


Figure S9. GC chromatogram (in manuscript Table 3, entry 9)

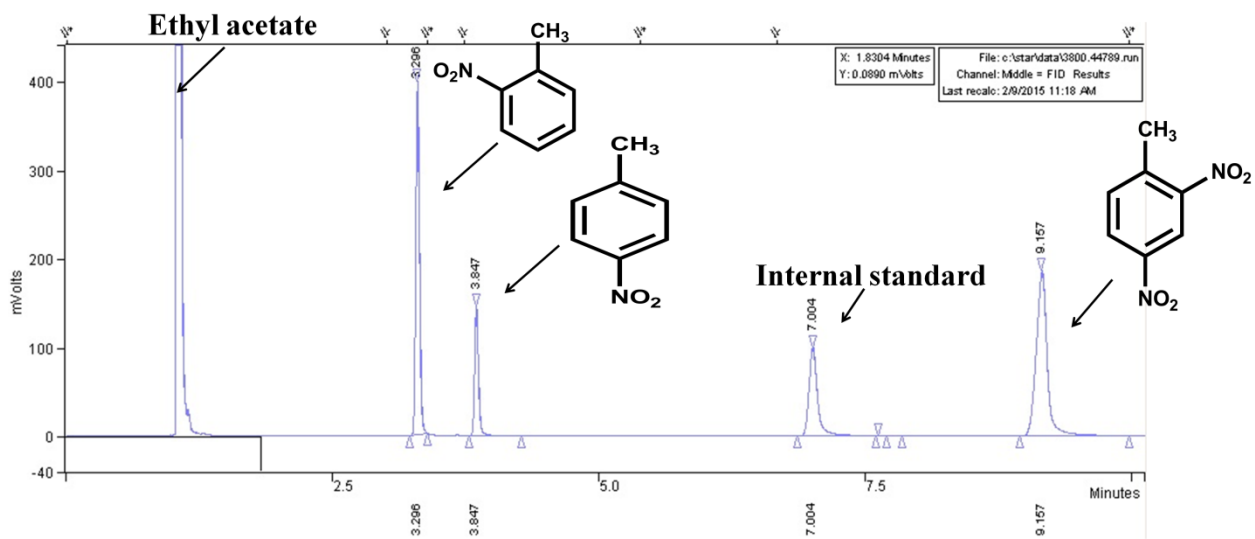


Figure S10. GC chromatogram (in manuscript Figure 10, red legend)

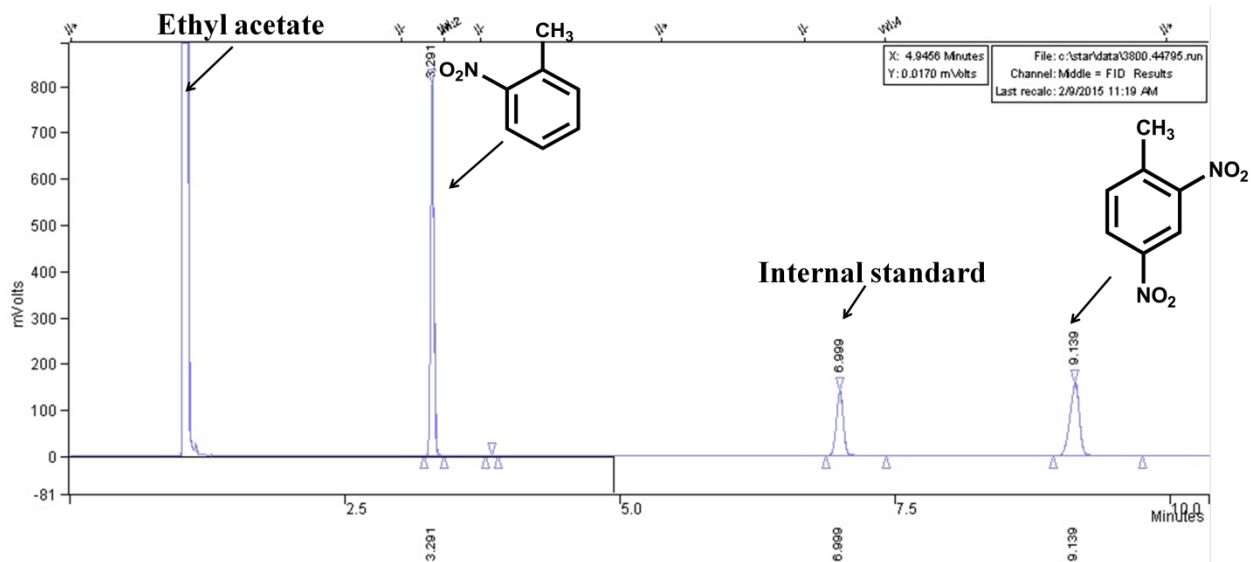


Figure S11. GC chromatogram (in manuscript Figure 10, blue legend)

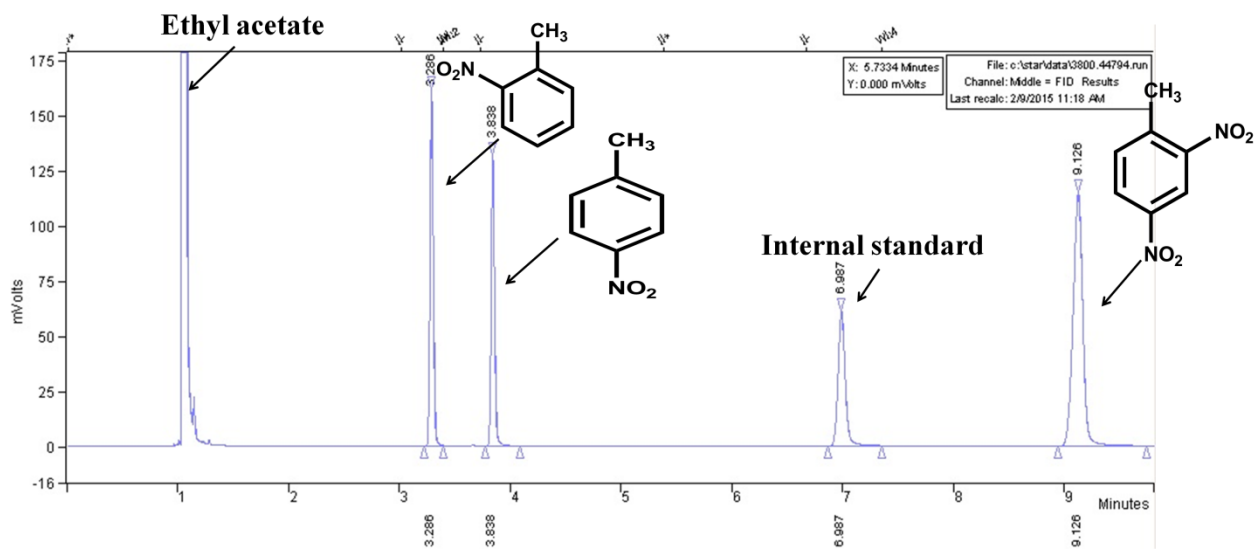


Figure S12. GC chromatogram (in manuscript Figure 10, green legend)

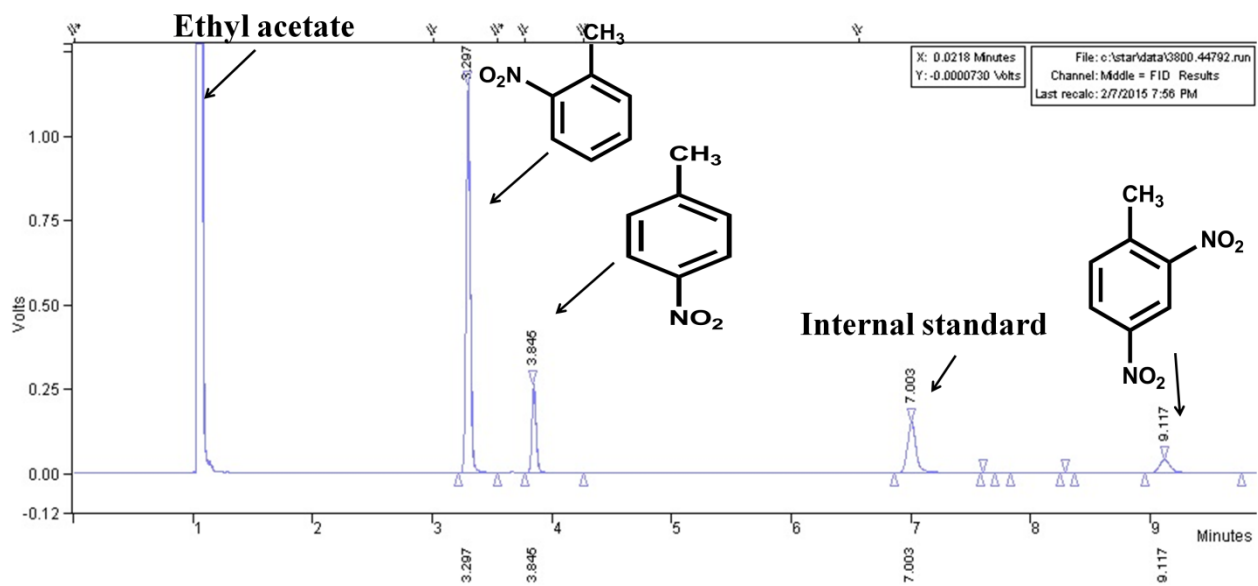


Figure S13. GC chromatogram (in manuscript Figure 11, black legend)

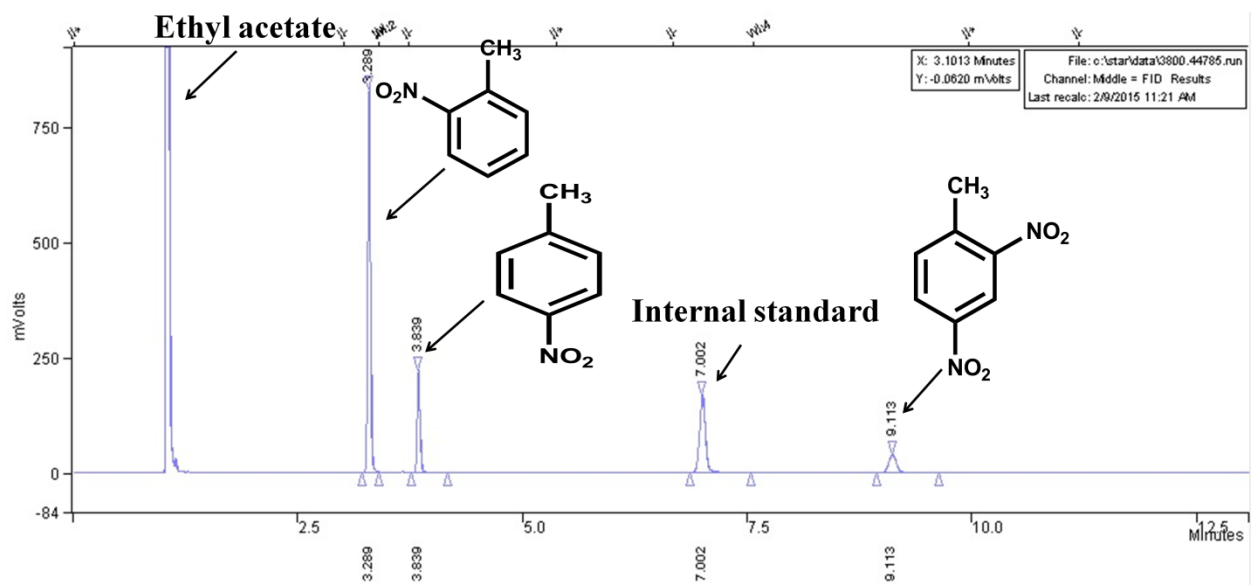


Figure S14. GC chromatogram (in manuscript Figure 12, yellow legend)