

Supplementary Information

Figure S1:

UV-visible spectra of the WSAHA native solution and of the supernatants collected at the end of the experiments of WSAHA sorption performed at Al_2O_3 -to-solution ratios r from 4.9 to 25 g.L^{-1} at pH 3.7

Figure S2:

Van Krevelen diagram gathering WSAHA constituents that showed a low affinity for the alumina surface (compounds represented in Fig. 6e) including (o) that were not detected on the ESI(-)FTMS spectrum of the filtrate obtained after ultrafiltration of WSAHA native solution with a 3kDa-membrane and (●) whose elemental composition matched that of compounds detected in the 3kDa-filtrate.

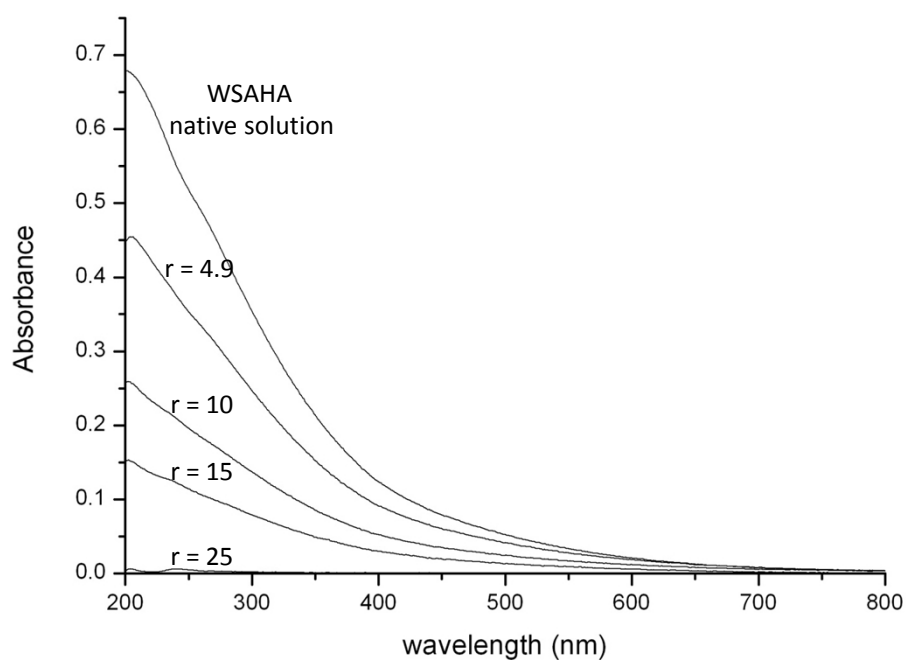


Figure S1

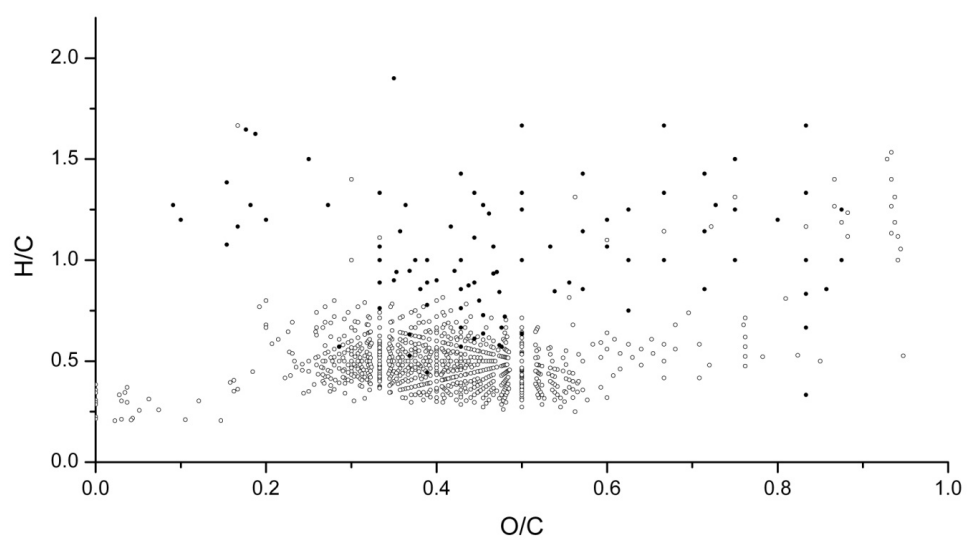


Figure S2