

Supporting Information

Sorption of arsenate onto magnetic iron-manganese (Fe-Mn) biochar composites

Shengsen Wang¹, Bin Gao^{1*}, Yuncong Li², Yongshan Wan², Anne Elise Creamer¹

1. *Department of Agricultural and Biological Engineering, University of Florida, Gainesville, FL 32611*
2. *Tropical Research and Education Center, Soil and Water Science Department, University of Florida, Homestead, FL 33031*

* Corresponding author: phone: (1) 352-392-1864 ext. 285, email: bg55@ufl.edu

Figure S1. Magnetic properties of FMM and FMB

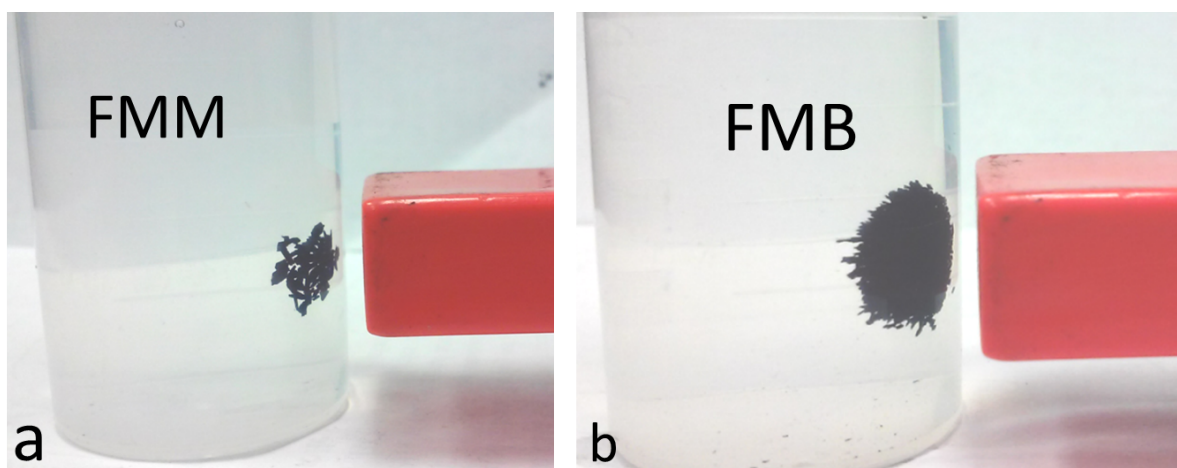


Figure S2. SEM images of biochars: PB (a, d), FMM (b, e), and FMB (c, f) at x1000 (a, b, c) and x10,000 (d, e, f).

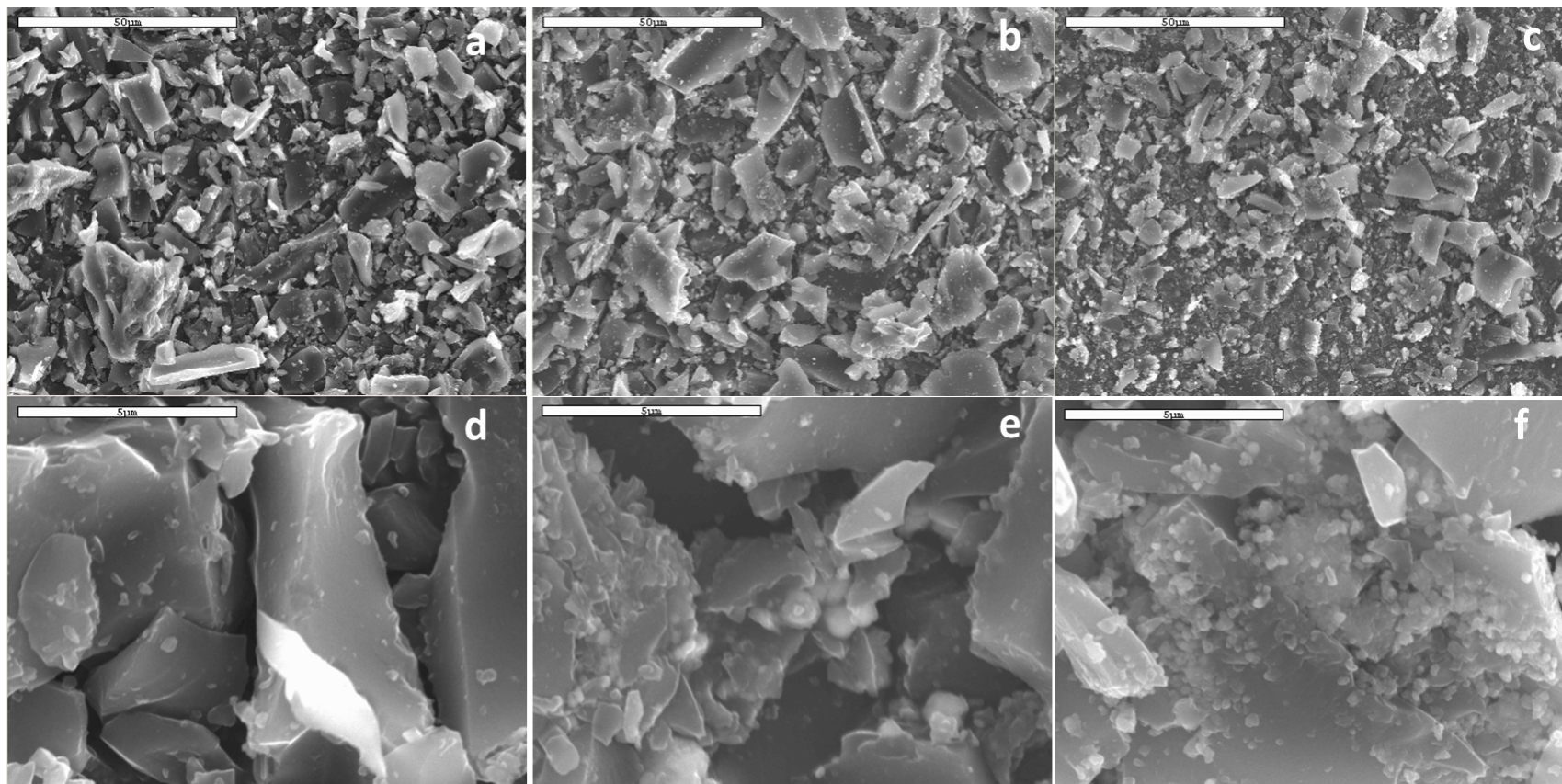


Figure S3. EDS spectra of biochars: PB (a), FMM (b), and FMB (c) (1000X)

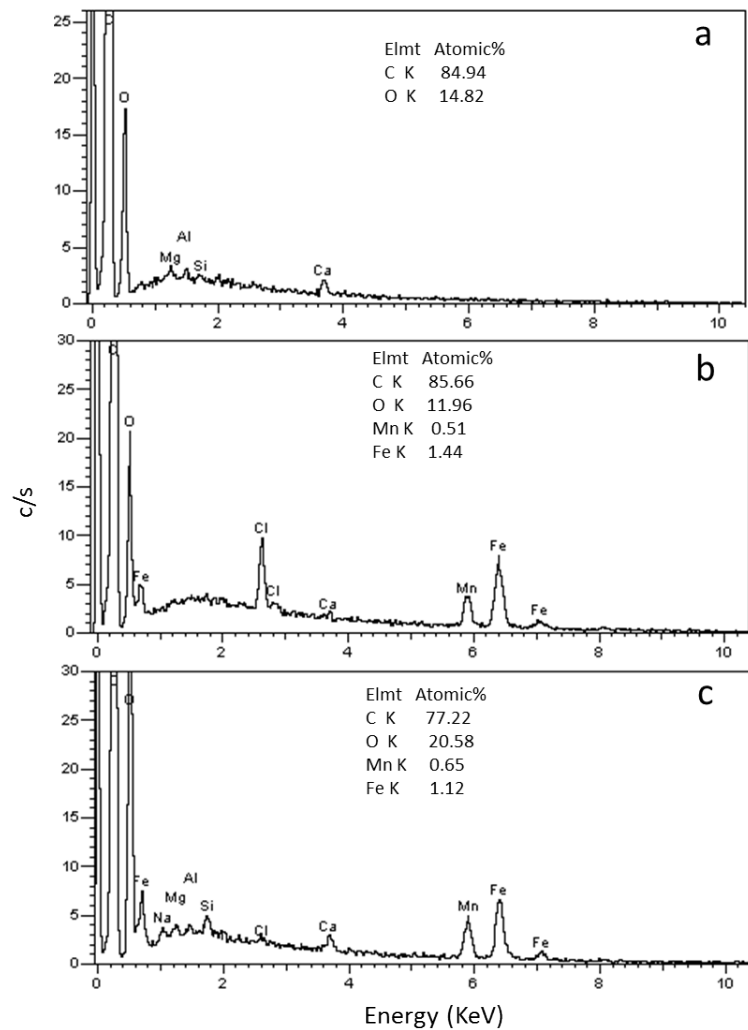


Figure S4. XPS diffraction patterns of Fe2p_{1/2} and Fe2p_{3/2} spectra of FMM (a) and FMB (b)

