

Graphene Oxide Hydrogel Improved Sensitivity In one-dimensional photonic crystals for detection of beta-glucan

Jiaoyu Ren,^a Hongyun Xuan,^a Cihui Liu,^a Chong Yao,^a Yanxi Zhu,^a Xuefan Liu,^a Liqin Ge^a

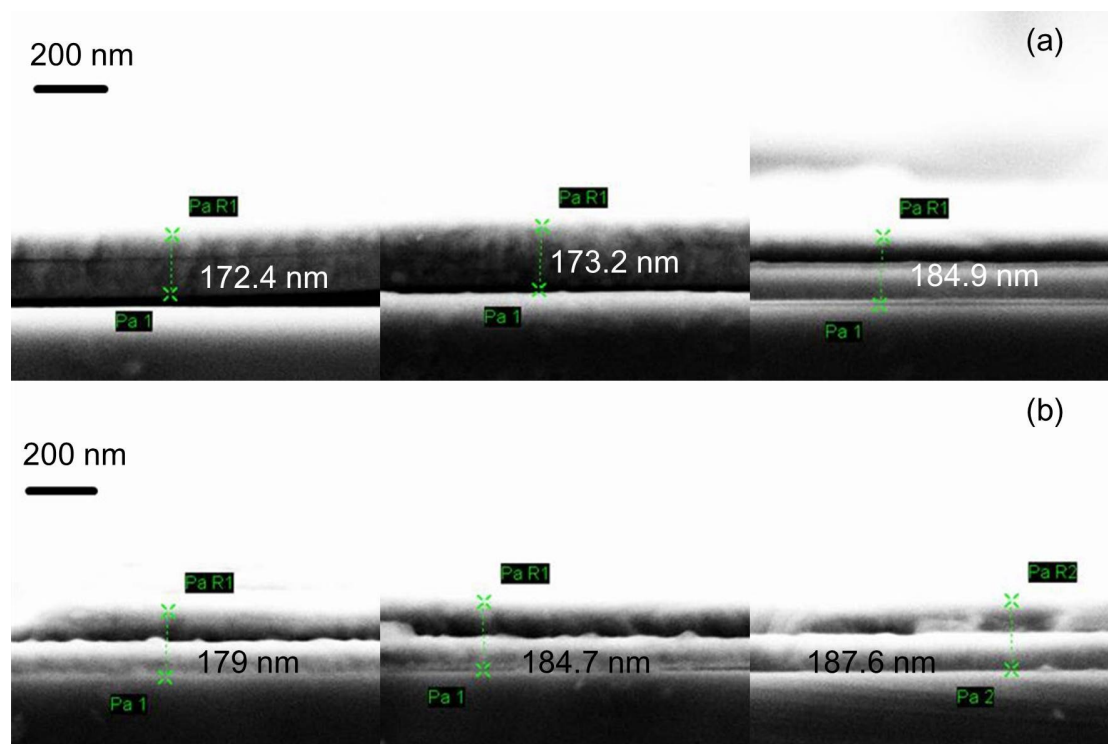


Figure S1 SEM images of TiO₂/GO hydrogel 1DPhC with a PANI defect before (a) /after (b) detecting beta-glucan.