

Supporting Information for

Sandwich-like cobalt sulfide-graphene composite-An anode material of excellent electrochemical performance for sodium ion battery

Qian Zhou, Li Liu*, Guoxiong Guo, Zichao Yan, Jinli Tan, Zhifeng Huang, Xiaoying Chen, Xianyou Wang*

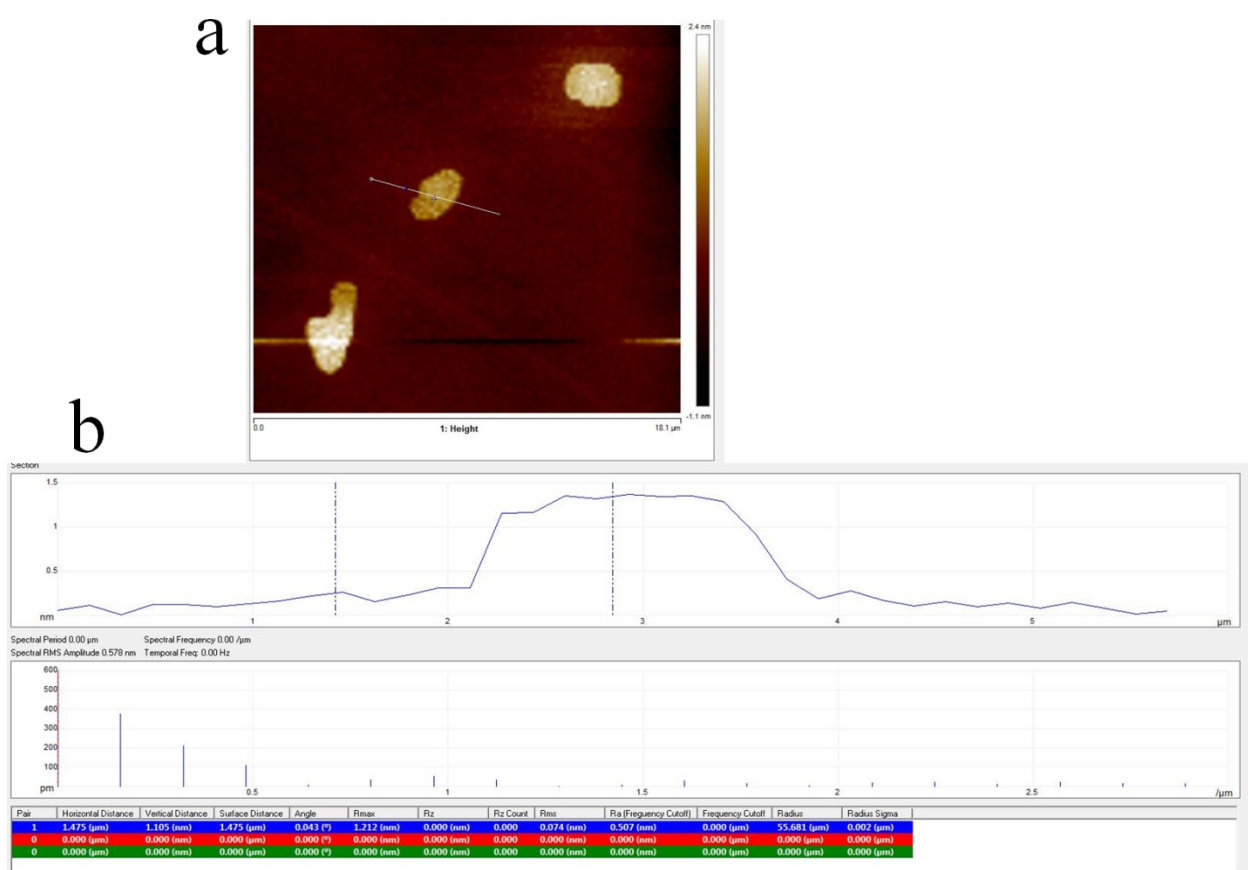


Fig. S1 (a) AFM images (b) line profile of graphene.

* Corresponding author. Tel.: +86-731-58292206; Fax: +86-731-58292477

E-mail addresses: liulili1203@126.com (L. Liu); wxianyou@yahoo.com (X.Y. Wang)

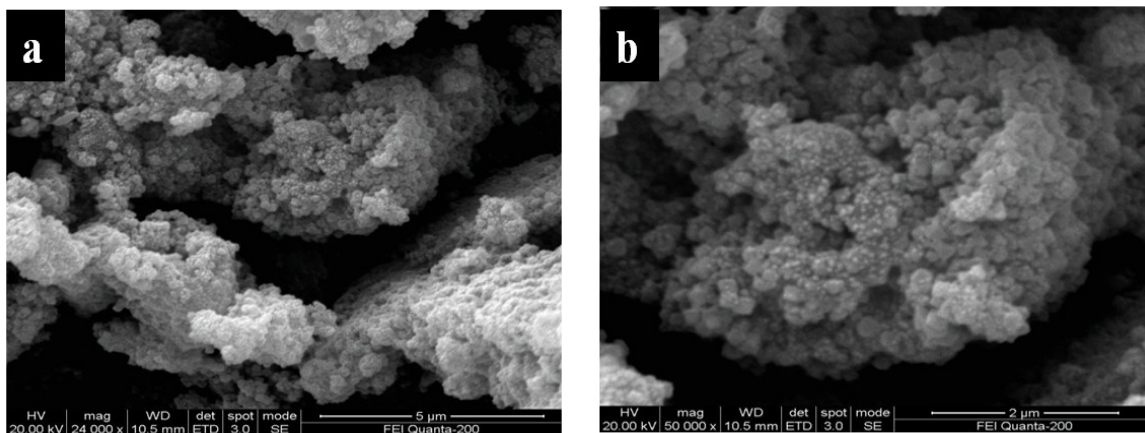


Fig. S2 (a) Low-magnification SEM images, (b) high-magnification SEM images of CoS.

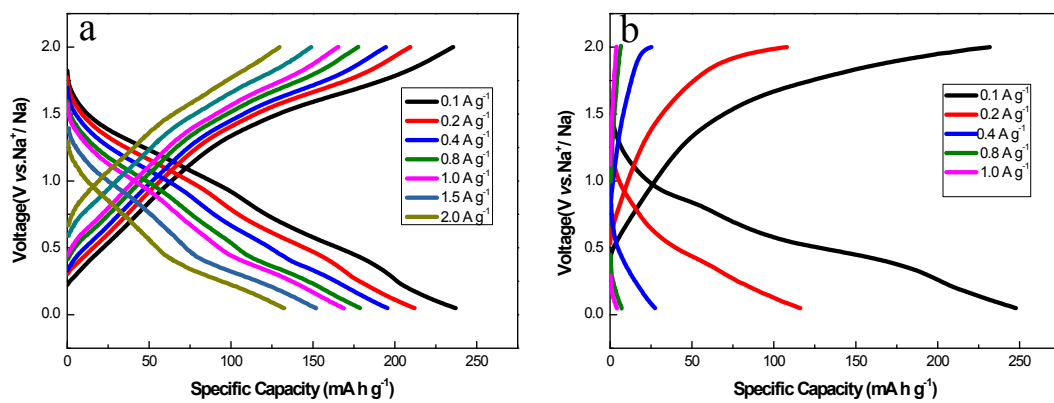


Fig. S3 Galvanostatic charge–discharge curves between 0.05 and 2.0 V at different current densities: (a) CoS/rGO, (b) CoS.

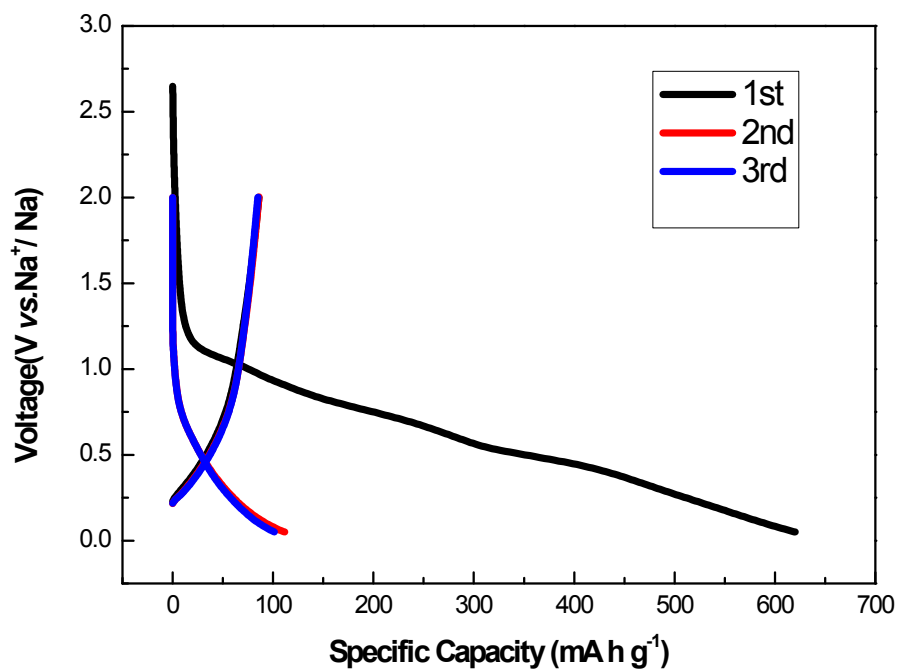


Fig. S4 The first three cycles discharge and charge curves of pure graphene between 0.05 and 2.0 V.