

## **A Novel Chiral electrochemiluminescence sensor discrimination for proline enantiomers**

Qinghong Wang, Xia Lin, Dongmei Guo, Cui Chen, Chunzhi Xuan, Juanjuan Xu,

Yingzi Fu\*

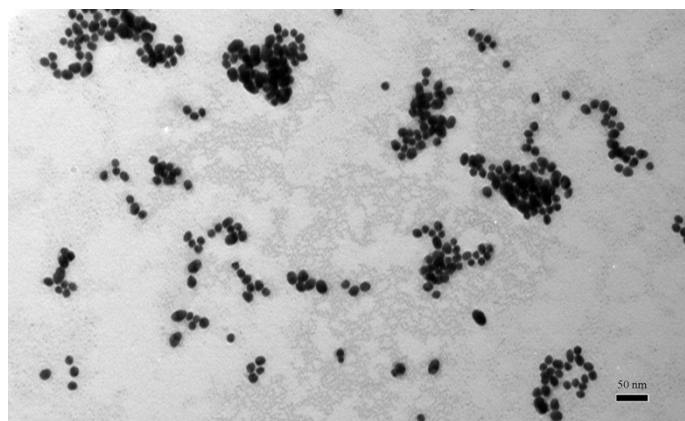
Laboratory of Luminescence and Real-Time Analysis (Southwest University),  
Ministry of Education, College of Chemistry and Chemical Engineering, Southwest  
University, Chongqing 400715, China.

Corresponding author: Yingzi Fu

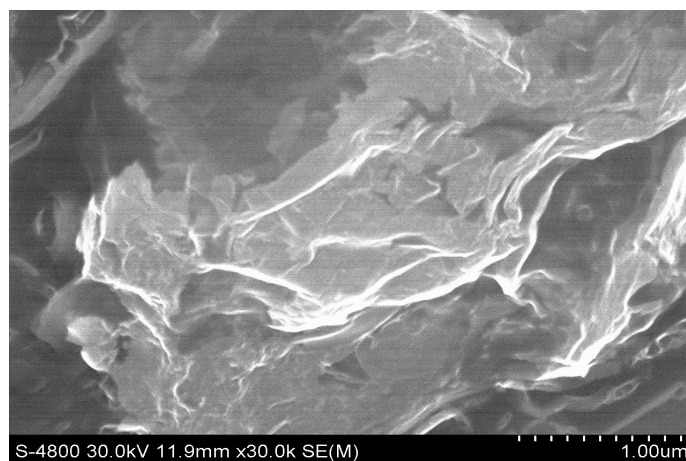
E-mail address: [fyzc@swu.edu.cn](mailto:fyzc@swu.edu.cn)

Fax: +86-023-68253195;

Tel: +86-023-68252360.



**Fig.S1.** TEM image of citrate-capped AuNPs with a diameter about 12nm



**Fig.S2.** SEM image of  $\beta$ -CD-rGO nanosheets