

Chitin based hybrid composite reinforced with graphene derivatives: a nanoscale study

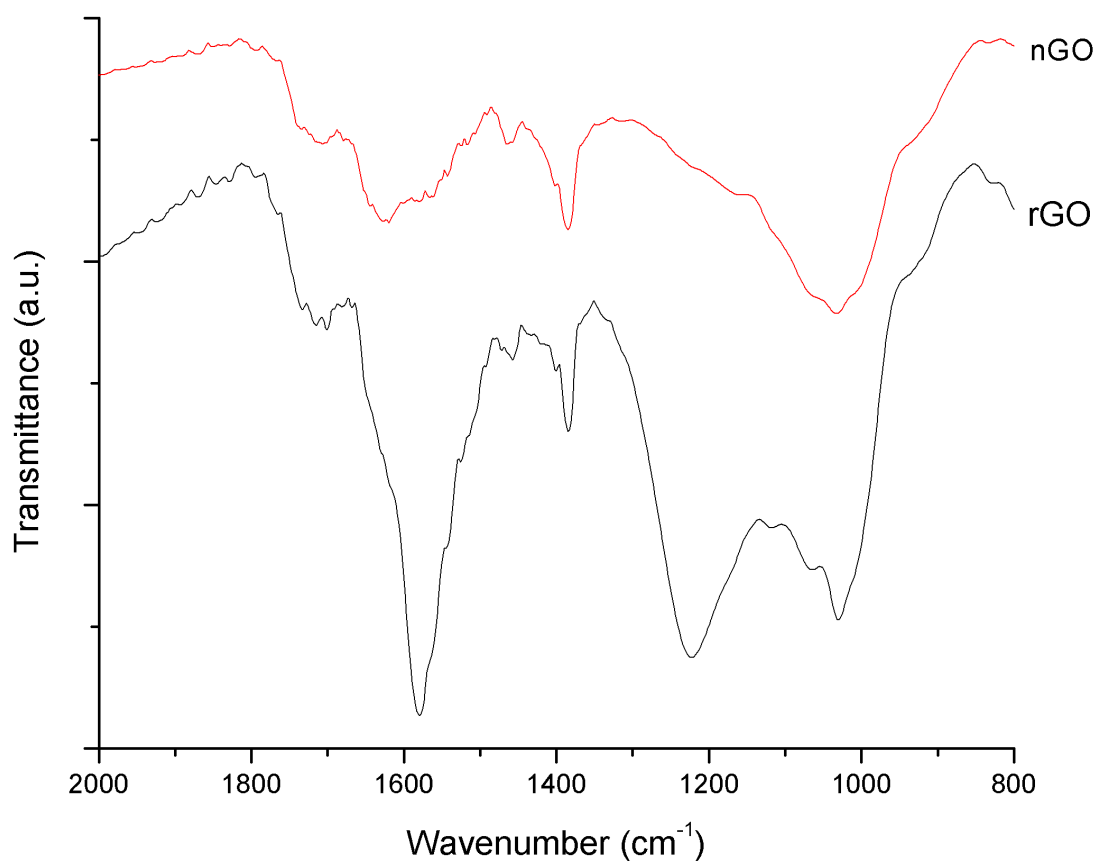
Joaquín Antonio González,^a María Emilia Villanueva,^a María Luz Peralta Ramos,^a Claudio Javier Perez,^b Ledia Leonor Piehl^c and Guillermo Javier Copello*^a

^a*Cátedra de Química Analítica Instrumental, Facultad de Farmacia y Bioquímica, Universidad de Buenos Aires (UBA), IQUIMEFA (UBA-CONICET), Junín 956, C1113AAD Buenos Aires, Argentina; Tel/fax: +54 11 49648254; E-mail: gcopello@ffyb.uba.ar*

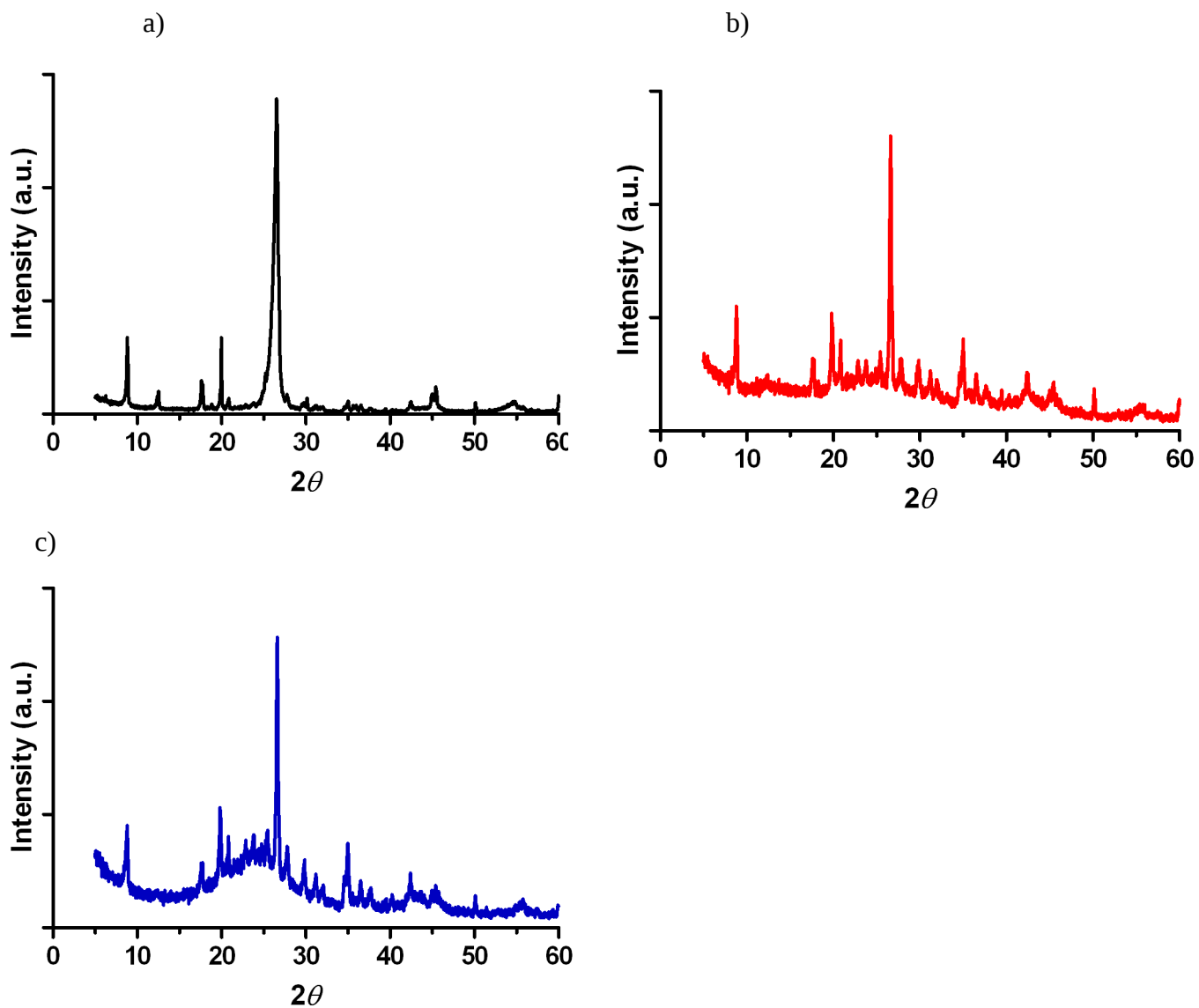
^b*Instituto en Investigaciones en Ciencia y Tecnologías de Materiales, Universidad de Mar del Plata, (CONICET), Juan B. Justo 4302, CP 7300 Mar del Plata, Argentina*

^c*Cátedra de Física, Facultad de Farmacia y Bioquímica, Universidad de Buenos Aires (UBA), Junín 956, C1113AAD CABA, Argentina*

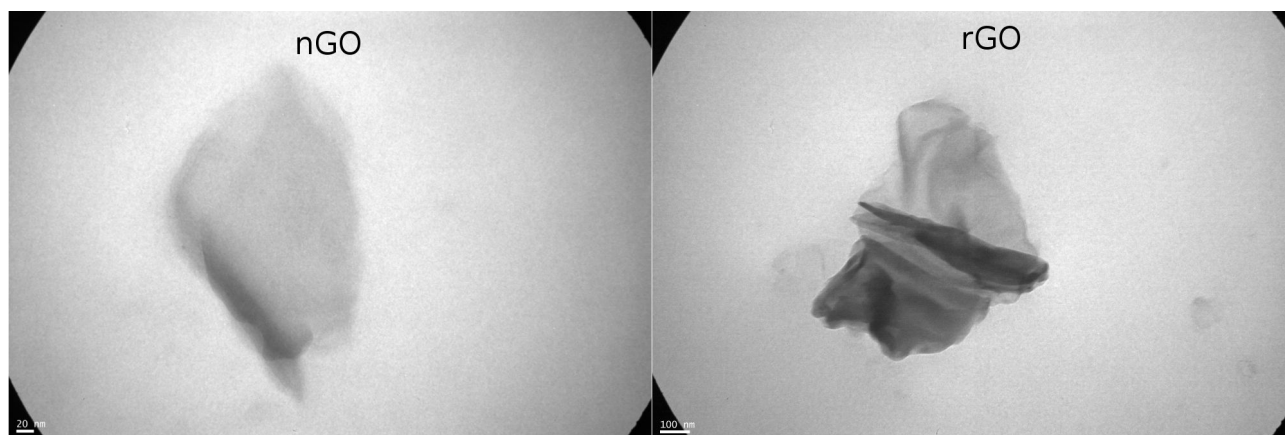
Electronic Supplementary Information



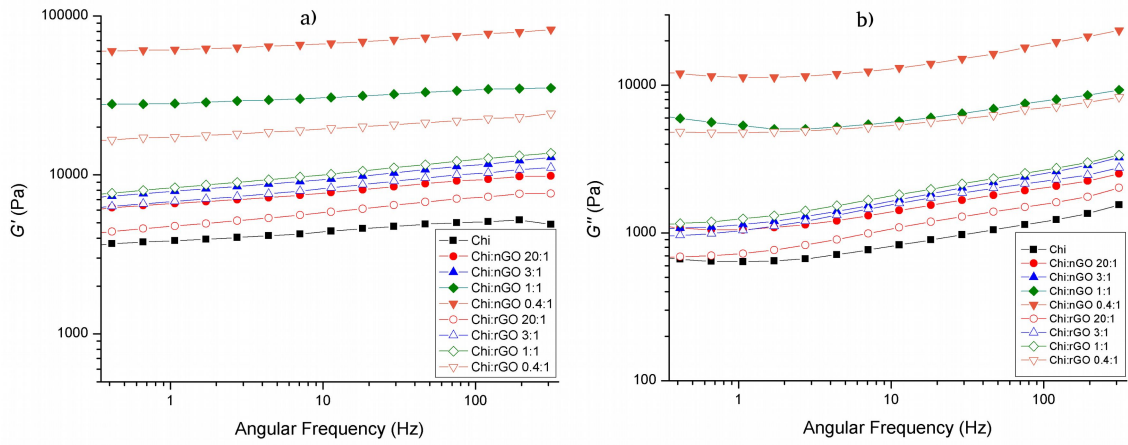
ESI 1: FT-IR of graphite, nGO and rGO.



ESI 2: XRD patterns of (a) graphite, (b) nGO and (c) rGO



ESI 3: TEM images of the nanosheets



ESI 4: Storage modulus (G') (a) and loss modulus (G'') (b) frequency dependent of the Chi:nGO and Chi:rGO hybrids.