

Supporting Information

Induced Transformation of Amorphous Silica to Cristobalite on Bacterial Surface

Shuang-Hong Xue, Hao Xie*, Hang Ping, Qi-Chang Li, Bao-Lian Su, Zheng-Yi Fu*

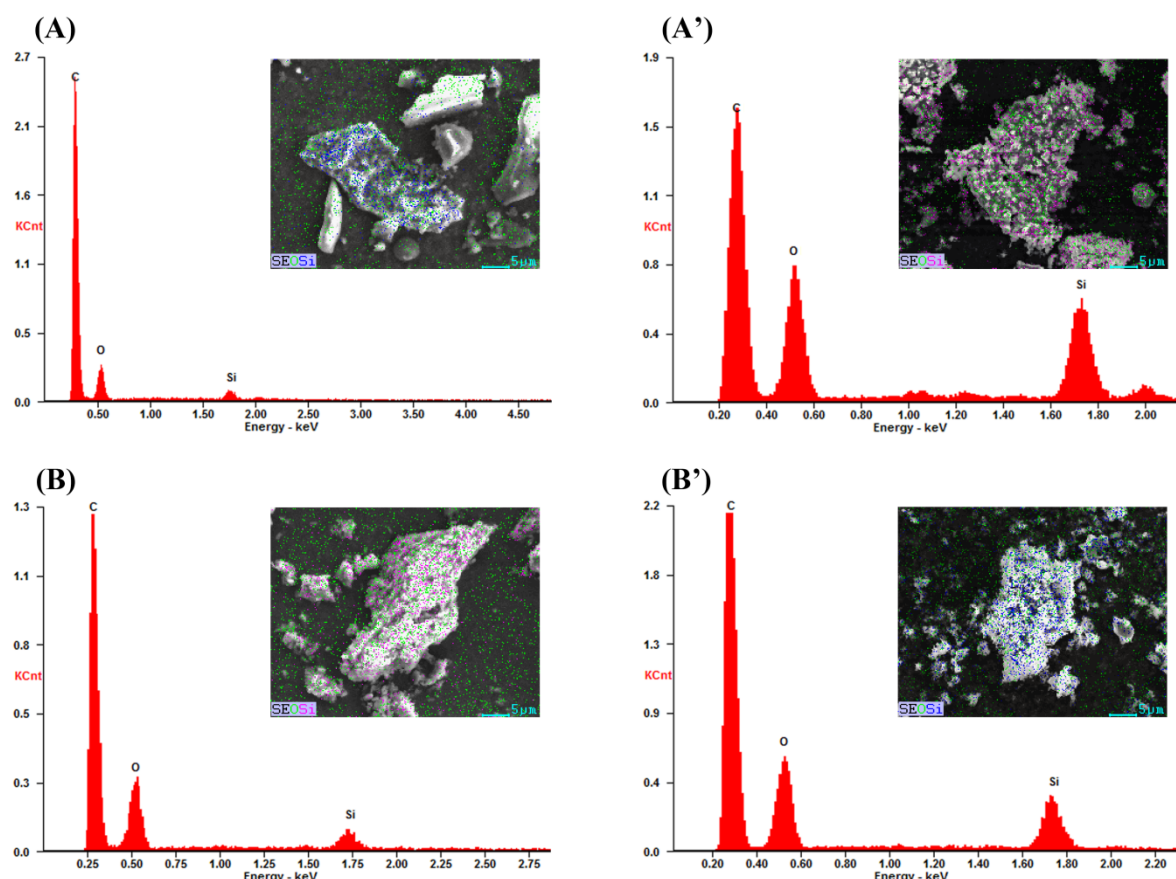


Figure S1. EDS analysis of silica deposition on *E. coli* (Gram negative) and *Bacillus cereus* (Gram positive) surface. Panel (A), EDS spectrum and SEM (inset) shows silicate deposition on *E. coli* surface before heating at 800°C. Panel (A'), EDS spectrum and SEM (inset) shows silicate deposition on *E. coli* surface after heating at 800°C. Panel (B), EDS spectrum and SEM (inset) shows silicate deposition on *Bacillus cereus* surface before heating at 800°C. Panel (B'), EDS spectrum and SEM (inset) shows silicate deposition on *Bacillus cereus* surface after heating at 800°C.