

## Supplementary material

### A facile preparation of superhydrophobic and oleophilic precipitated calcium carbonate sorbent powder for oil spill clean-ups from water and land surface

Manoj Patowary<sup>a</sup>, Khanindra Pathak<sup>b</sup>, Rajakumar Ananthkrishnan<sup>c,\*</sup>

<sup>a</sup> Advanced Technology Development Centre, Indian Institute of Technology Kharagpur, West Bengal 721302, India

<sup>b</sup> Department of Mining Engineering, Indian Institute of Technology Kharagpur, West Bengal 721302, India

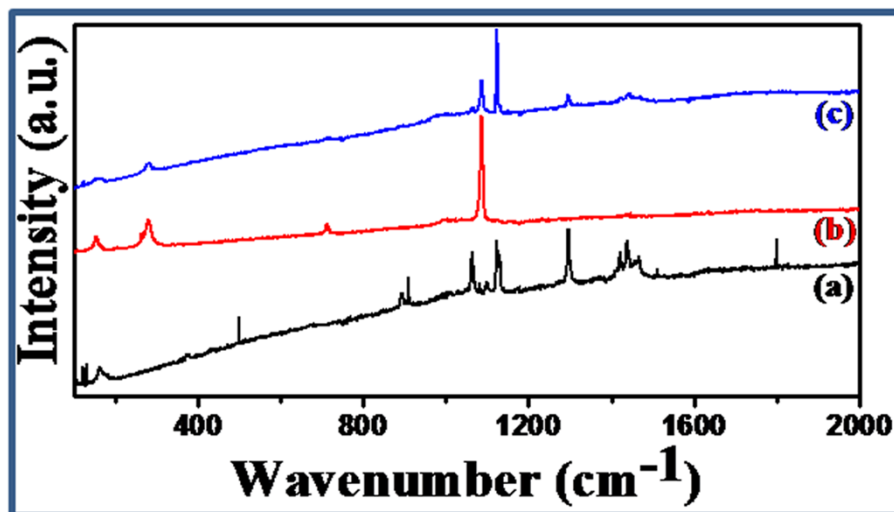
<sup>c</sup> Department of Chemistry, Indian Institute of Technology Kharagpur, West Bengal 721302, India

*E-mail address:* [raja.iitchem@yahoo.com](mailto:raja.iitchem@yahoo.com); Tel.: +91-3222-282322; Fax: +91-3222-255303

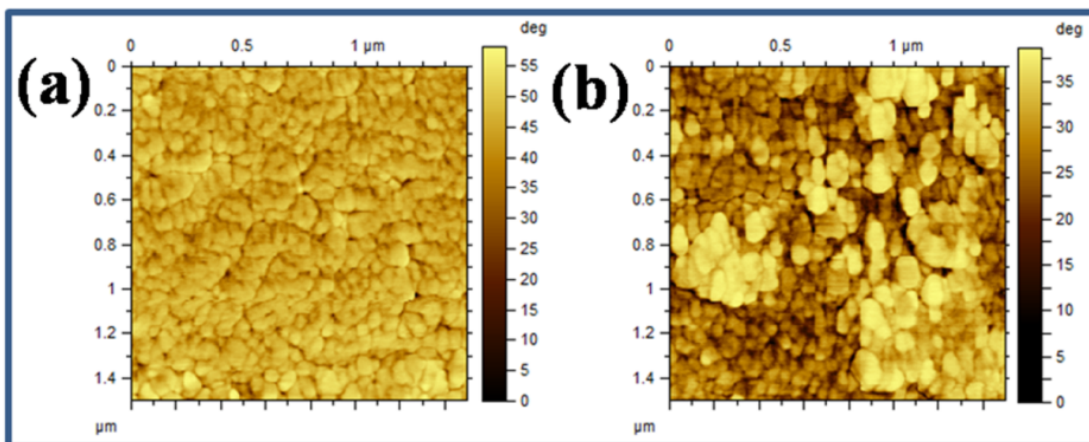
| Contents   | Page |
|--|------|
| <b>Table 1S</b> Amount of oil recovered (%) from crude oil-THF mixture, obtained after washing the oil-sorbed regenerated/recycled sorbent powder. | 2    |
| <b>Fig. 1S</b> Raman spectra of palmitic acid (a), PCC (b), and SHPCC (c).   | 2    |
| <b>Fig. 2S</b> AFM images of PCC (a) and SHPCC (b).  | 3    |
| <b>Fig. 3S</b> Nitrogen adsorption-desorption curves of PCC.   | 3    |
| <b>Fig. 4S</b> Nitrogen adsorption-desorption curves of SHPCC.   | 4    |
| <b>Fig. 5S</b> Crude oil droplet before addition to SHPCC (a); after 0.5 s (b); after 1 s (c); after 1.5 s (d); after 2 s (e); after 2.5 s (f).    | 4    |

**Table 1S** Amount of oil recovered (%) from crude oil-THF mixture, obtained after washing the oil-sorbed regenerated/recycled sorbent powder.

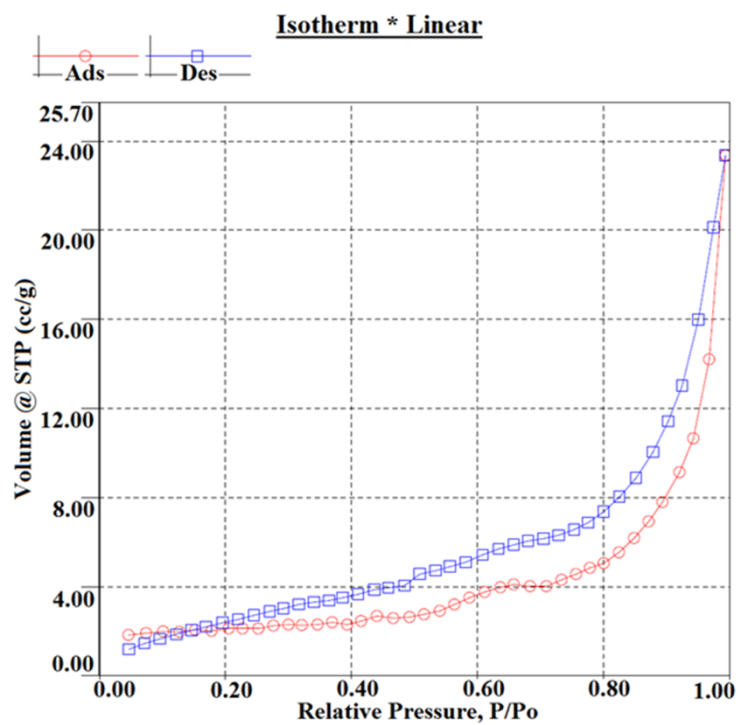
| Sorption cycle | Oil recovered (%) |
|----------------|-------------------|
| First          | 98.5              |
| Second         | 98.3              |
| Third          | 99.1              |
| Fourth         | 98.6              |
| Fifth          | 98.1              |



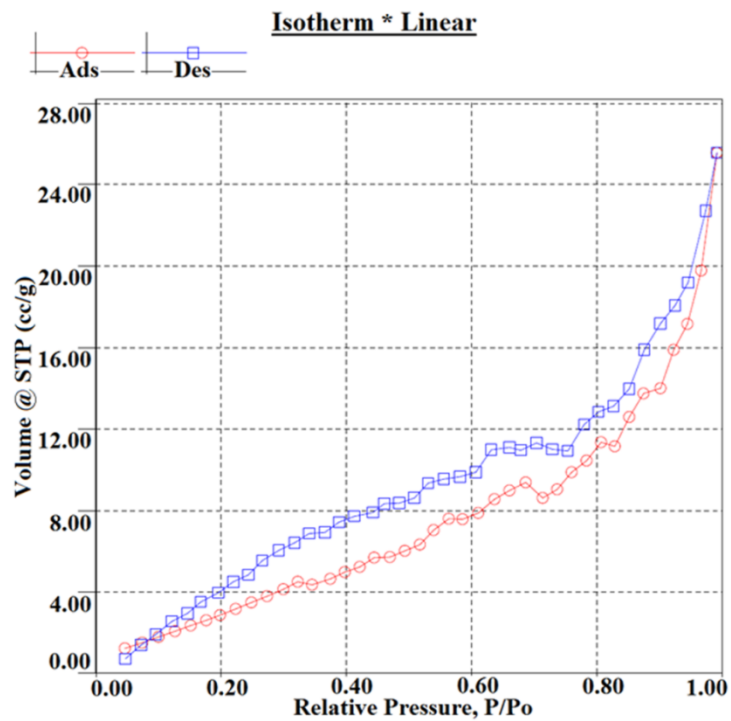
**Fig. 1S** Raman spectra of palmitic acid (a), PCC (b), and SHPCC (c).



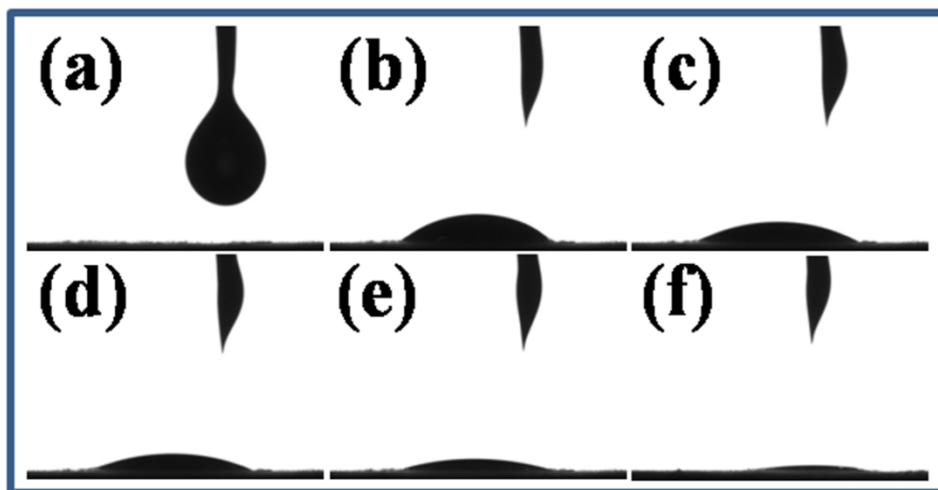
**Fig. 2S** AFM images of PCC (a) and SHPCC (b).



**Fig. 3S** Nitrogen adsorption-desorption curves of PCC.



**Fig. 4S** Nitrogen adsorption-desorption curves of SHPCC.



**Fig. 5S** Crude oil droplet before addition to SHPCC (a); after 0.5 s (b); after 1 s (c); after 1.5 s (d); after 2 s (e); after 2.5 s (f).