

## Supplementary data

# Antibacterial activities of polymeric poly (DL-lactide-co-glycolide) nanoparticles and Soluplus<sup>®</sup> micelles against *Staphylococcus epidermidis* biofilm and their characterization

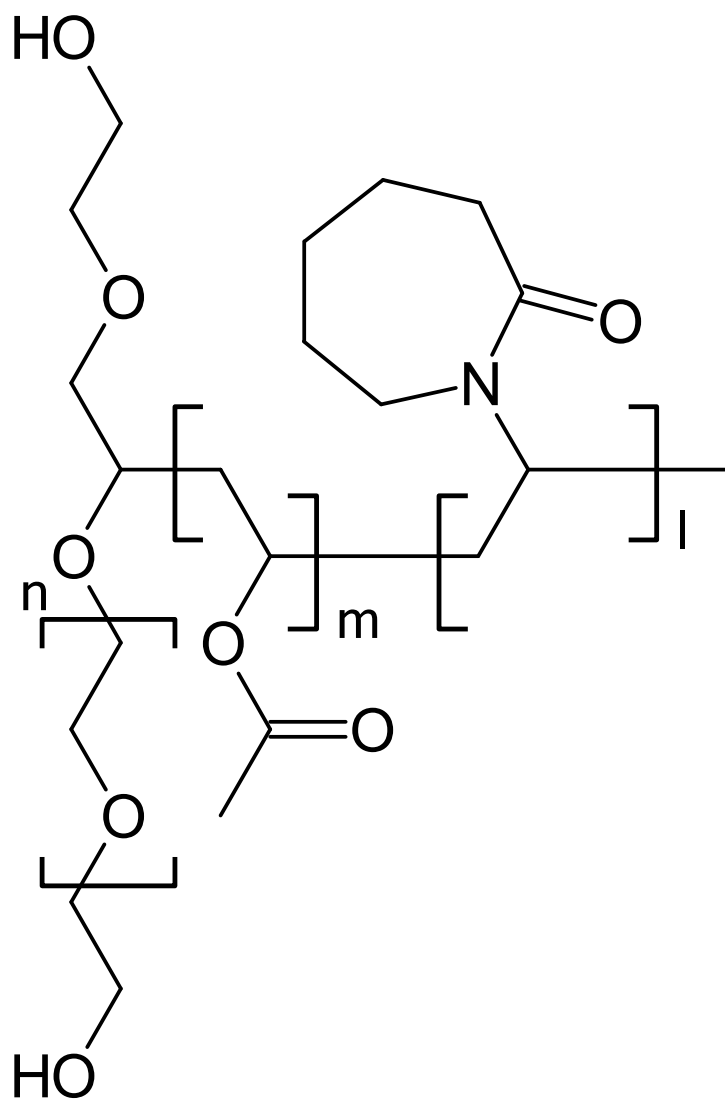
*Chisato Takahashi, Shoko Saito, Asami Suda, Noriko Ogawa, Yoshiaki Kawashima, and Hiromitsu Yamamoto\**

Pharmaceutical Engineering, School of Pharmacy, Aichi Gakuin University,

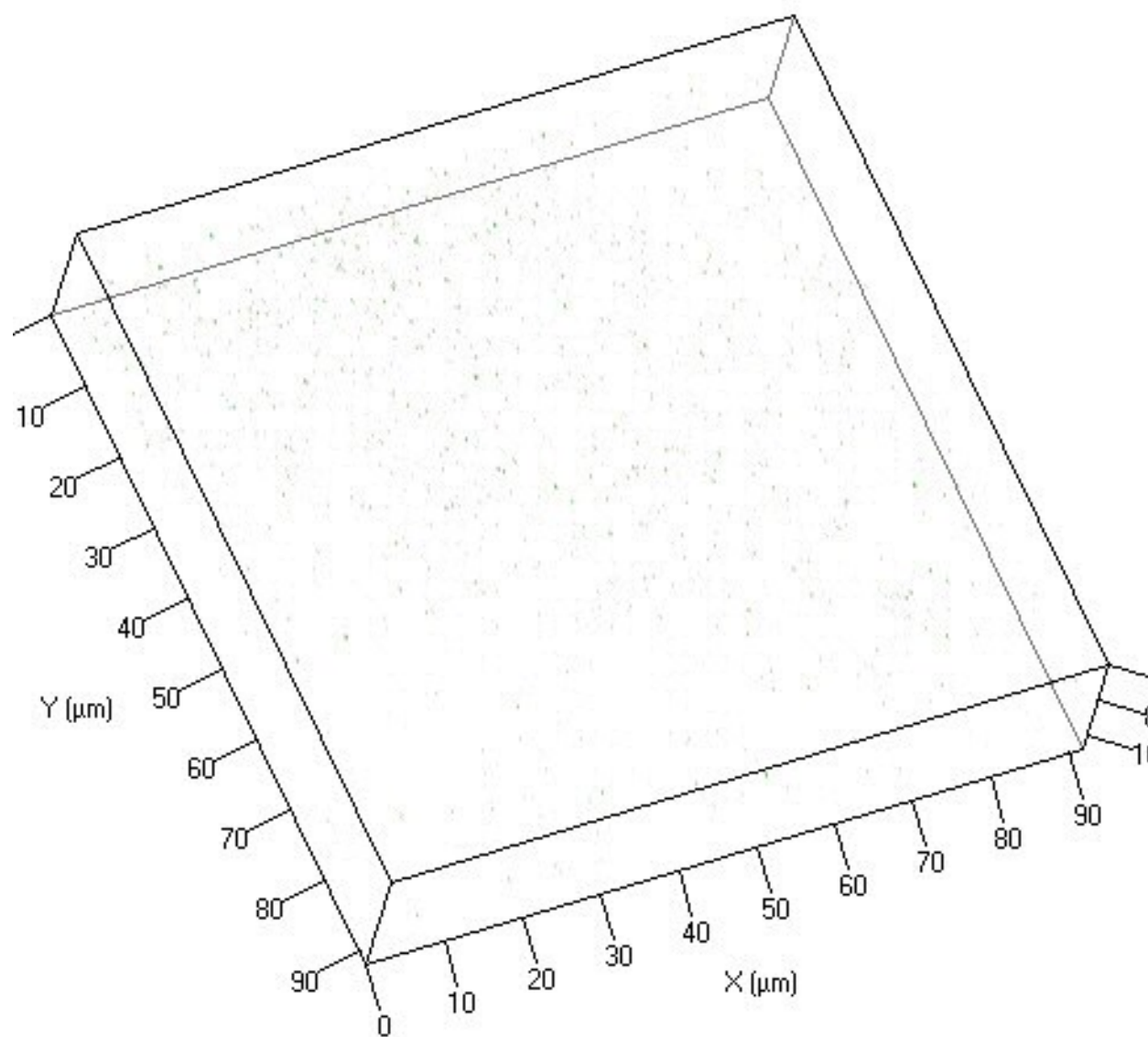
1-100, Kusumoto-cho, Chikusa-ku, Nagoya, Aichi 464-8650, Japan

\*Corresponding author. Tel.:+81 52 757 6771; Fax:+81 52 757 6799

E-mail: hiromitu@dpc.agu.ac.jp



**Figure S1 Chemical structure of Soluplus®**



**Figure S2. Confocal fluorescence images of CS-Sol micelles adhered to the biofilm**