

Supporting Information

Tunable properties of GO-doped CoFe_2O_4 nanofibers elaborated by Electrospinning

C. Eid, E. Assaf, R. Habchi, P. Miele, and M. Bechelany

Characterization of Graphene oxide

The Atomic Force Microscopy (AFM) (Figures S1) shows the formation of single layers of Graphene Oxide by exfoliation with the thickness of about 1 ± 0.2 nm with a lateral size of approximately 0.4×1.0 μm demonstrated a very efficient exfoliation of GO.

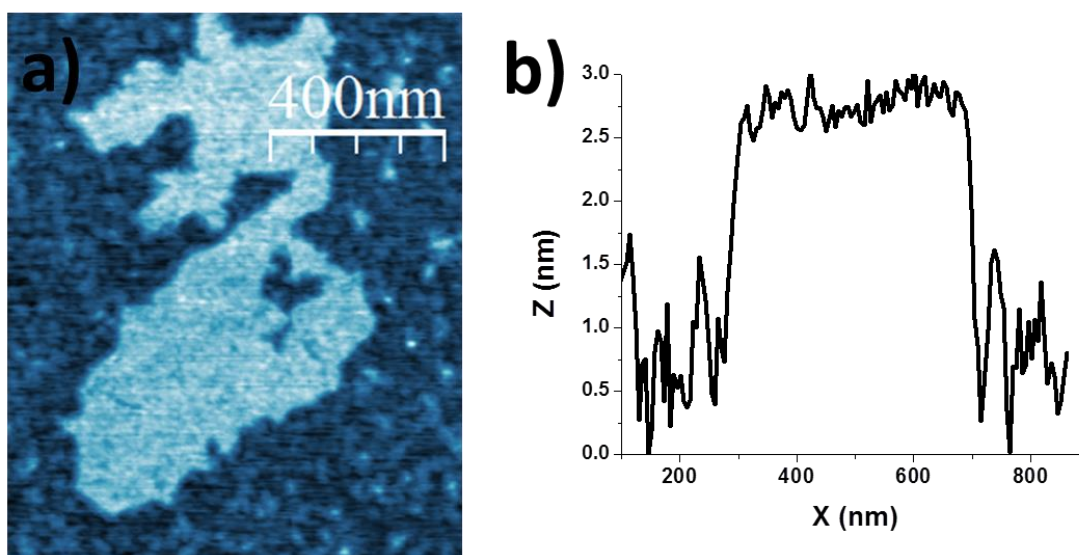


Figure S1. a) AFM topographic image and (b) height profile of a single layer Graphene Oxide