

Supporting Information

High Performance Mesoporous C@Se Composite Cathodes Derived from Ni-based MOFs for Li-Se Batteries

Ting Liu^{a, b†}, Yan Zhang^{a, b}, Junke Hou^{a, b}, Shiyu Lu^{a, b}, Jian Jiang^{a, b}, Maowen Xu^{a, b*†}

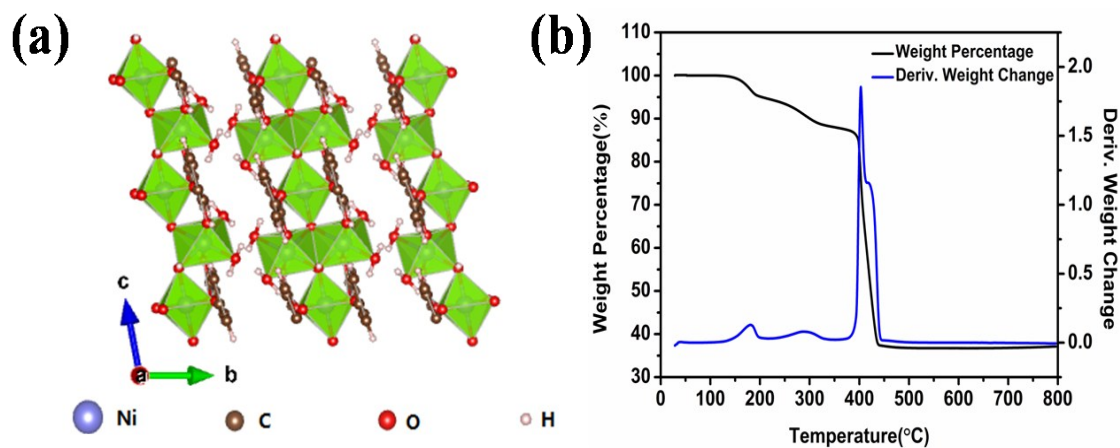


Fig. S1. (a) A schematic illustration of the crystal structure of the as-prepared MOF-Ni along the a axis; (b) TGA curve of MOF-Ni.

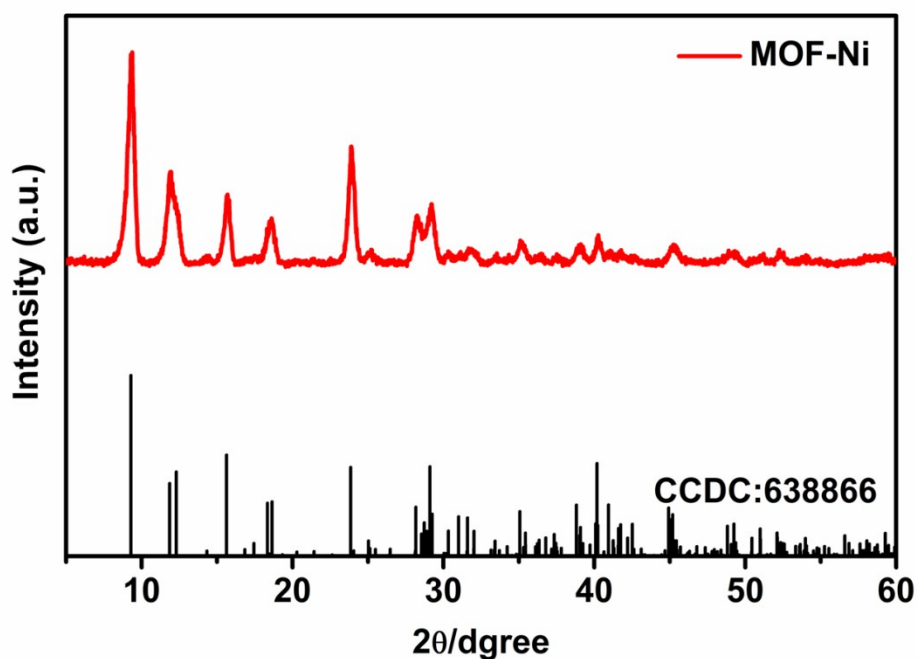


Fig. S2. XRD pattern of the MOF-Ni.

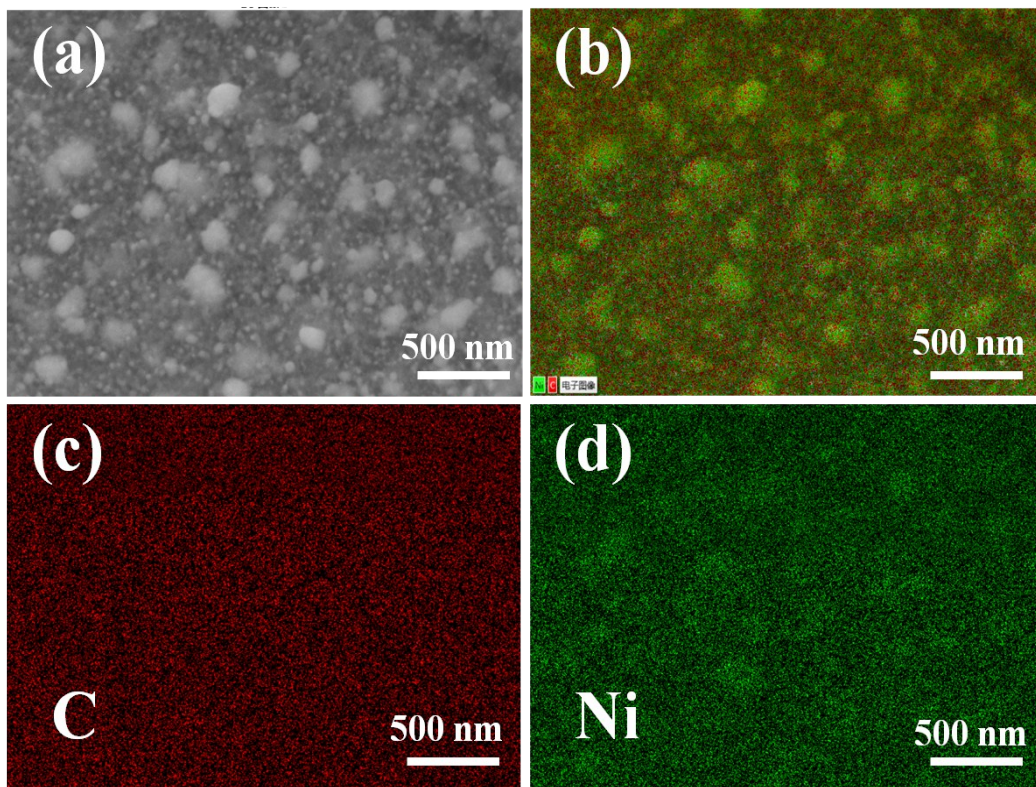


Fig. S3. (a), (b) Area of elemental mapping; elemental mappings of carbon (c); and nickel(d).

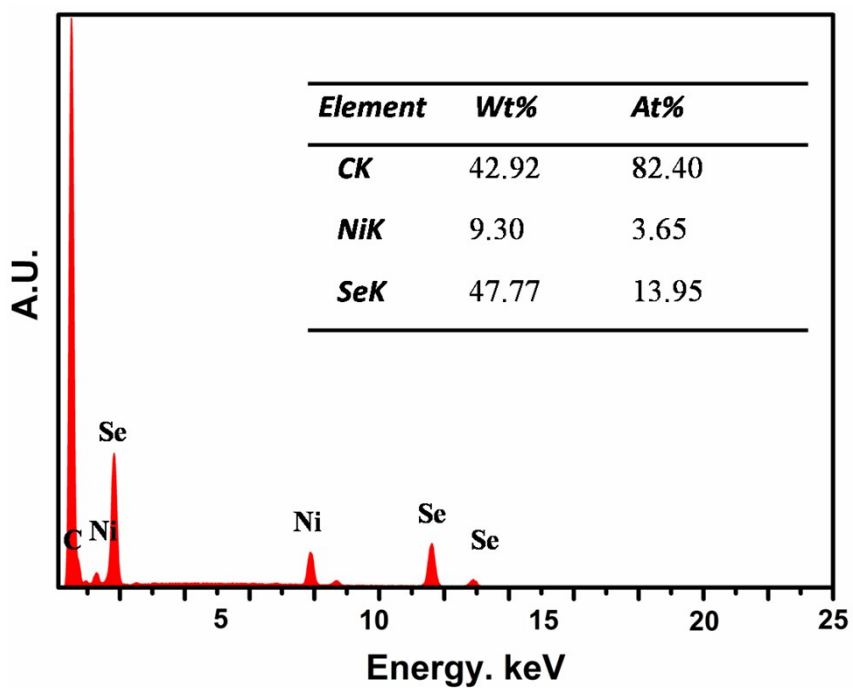


Fig. S4. EDS spectra of meso-C@Se.

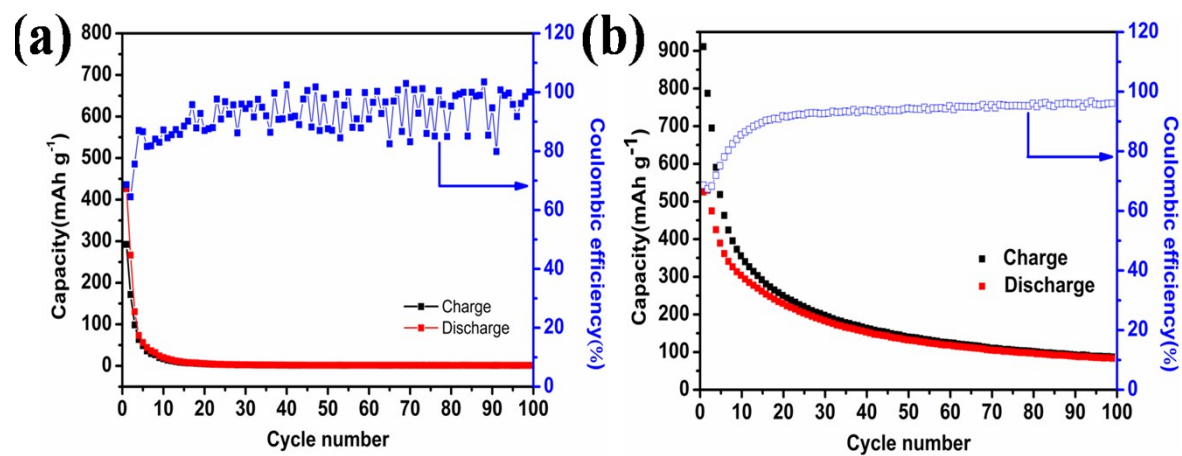


Fig. S5. (a) Cycling performance of NiSe₂; (b) Cycling performance of CB@Se.