

***Electronic Supplementary Information for RSC Advances  
article***

**Surfactant Induced Aggregation-Disaggregation of  
Photodynamic Active Chlorin e6 and its relevant  
Interaction with DNA Alkylating Quinone in Biomimic  
Micellar Microenvironment**

*Manojkumar Jadhao<sup>†</sup>, Piyush Ahirkar<sup>†</sup>, Himank Kumar<sup>†</sup>, Ritika Joshi, Oinam Romesh Meitei and Sujit Kumar Ghosh\**

*Department of Chemistry, Visvesvaraya National Institute of Technology, Nagpur, Maharashtra, 440010, India*

*<sup>†</sup>All the three authors have equal contribution in this article*

**Corresponding Author full address details:**

Sujit Kumar Ghosh\*, Department of Chemistry, Visvesvaraya National Institute of Technology, Nagpur, Maharashtra, 440010, India, e-mail: [sujitju@yahoo.co.in](mailto:sujitju@yahoo.co.in), [skghosh@chm.vnit.ac.in](mailto:skghosh@chm.vnit.ac.in)

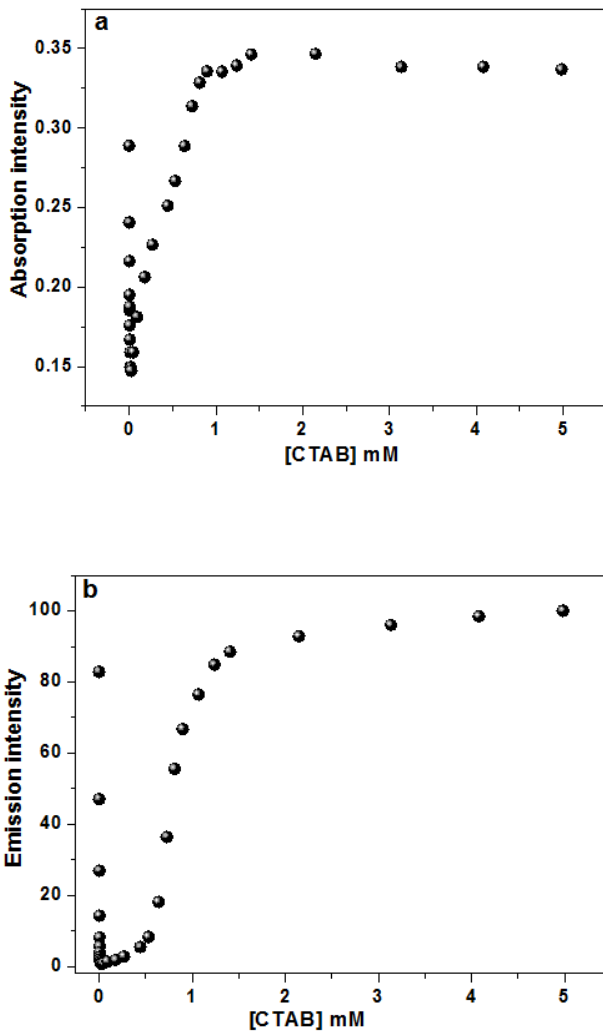
**Contents**

**Figure S1:** Variation of absorption (a) and emission intensity (b) of Ce6 with CTAB concentrations below and above CMC value of the surfactants.

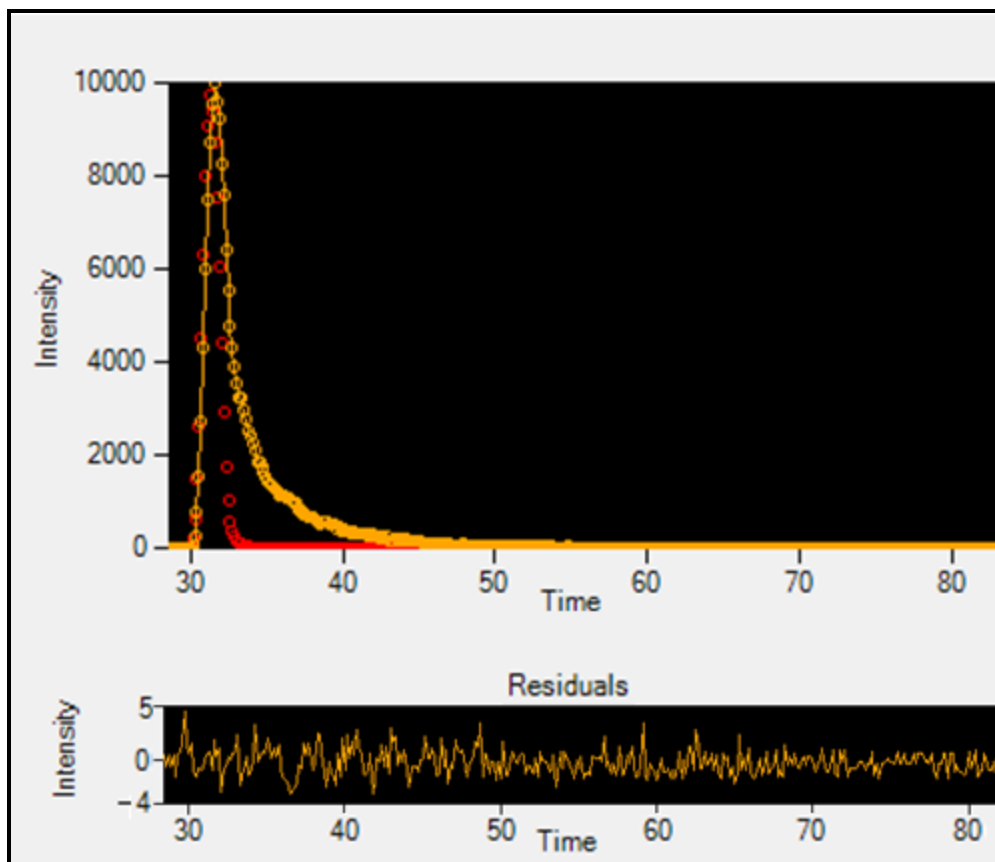
**Figure S2:** Residuals plot of Ce6 decay curve in pre-micellar concentration of CTAB fitted for three component systems.

**Figure S3:** Absorption spectra of Ce6 in different Dioxane-water mixture.

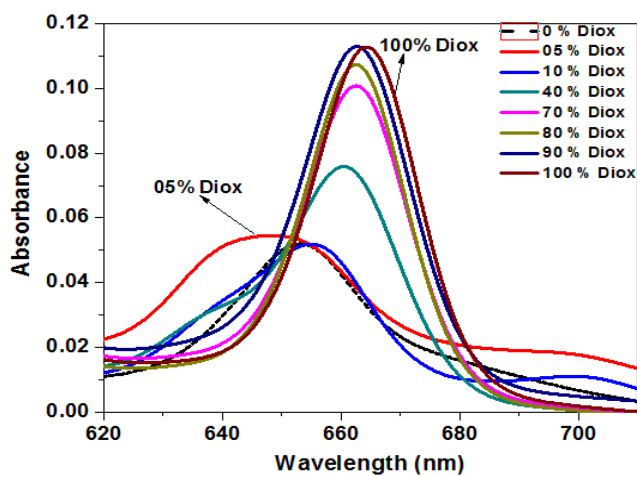
**Figure S4:** Emission spectra of Ce6 (1.5  $\mu\text{M}$ )  $\lambda_{\text{exc}}$  at 405 nm with increasing AZDCIQ in deaerated (a) aqueous, (b) CTAB (5 mM) and (c) TX-100 (2 mM).



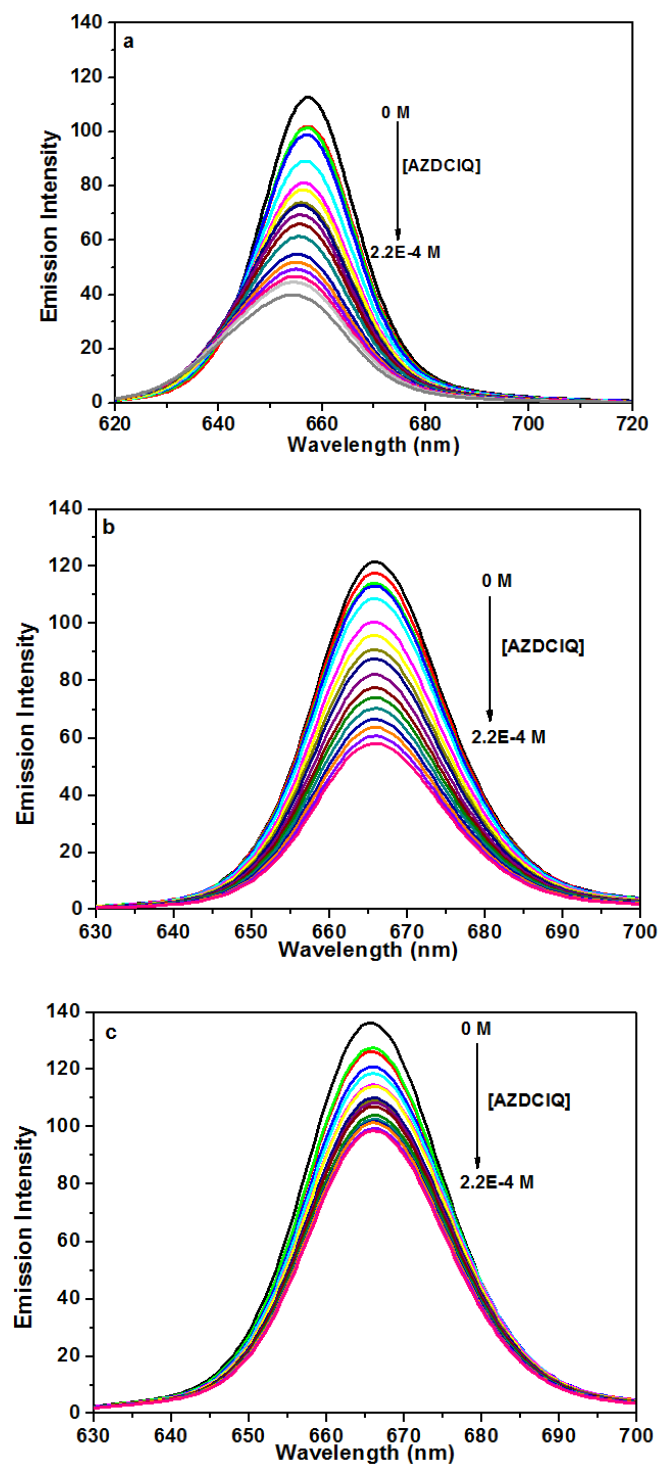
**Figure S1:** Variation of absorption (a) and emission intensity (b) of Ce6 with CTAB concentrations below and above CMC value of the surfactants.



**Figure S2:** Residuals plot of Ce6 decay curve in pre-micellar concentration of CTAB fitted for three component systems.



**Figure S3:** Absorption spectra of Ce6 in different Dioxane-water mixture.



**Figure S4:** Emission spectra of Ce6 (1.5 μM)  $\lambda_{\text{exc}}$  at 405 nm with increasing AZDCIQ in deaerated (a) aqueous, (b) CTAB (5 mM) and (c) TX-100 (2 mM).