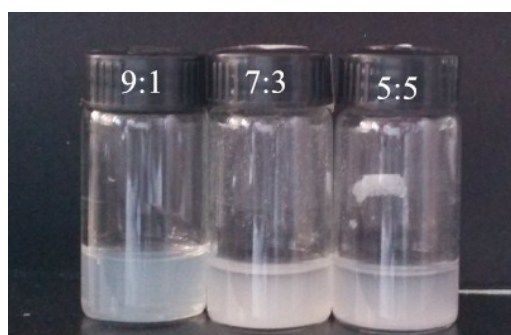


Supplementary Information

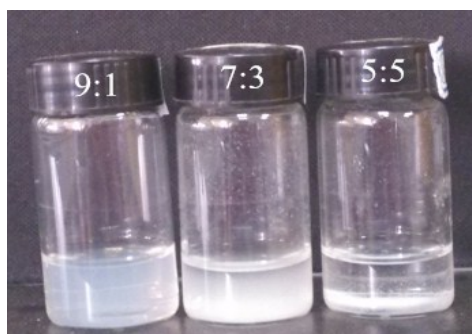
**Preparation of keratin/chlorhexidine complex nanoparticles for long-term
and dual stimuli-responsive release**

Xuelian Zhi, Yanfang Wang, Pengfei Li, Jiang Yuan*, Jian Shen*

Jiangsu Key Laboratory of Biofunctional Materials, College of Chemistry and Materials Science, Nanjing
Normal University, Nanjing 210023, China



a



b

Fig. S1 Effect of ratio to keratin and CHX on the stability of KCNPs after 4 h (a) and 14 day (b) standing.

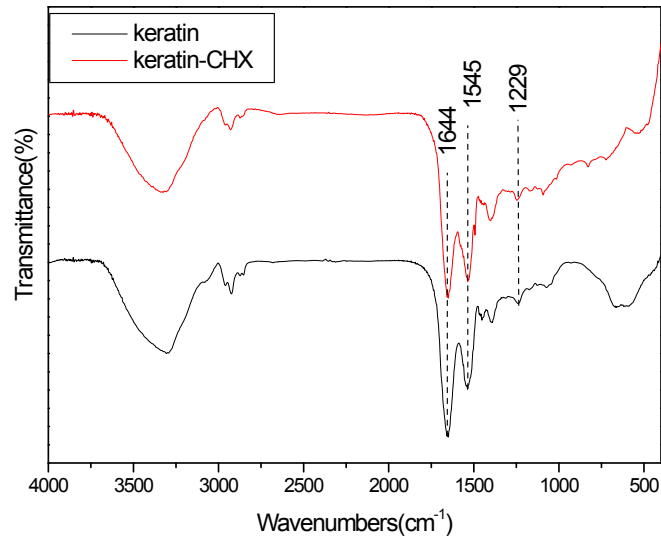


Fig.S2 FT-IR spectra of keratin and KCNPs.

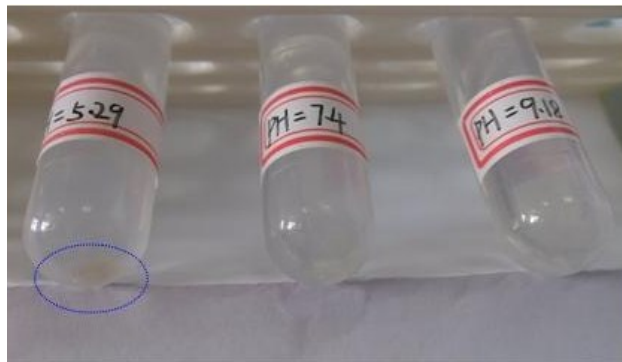


Fig.S3 Effect of pH value on the stability of KCNPs.

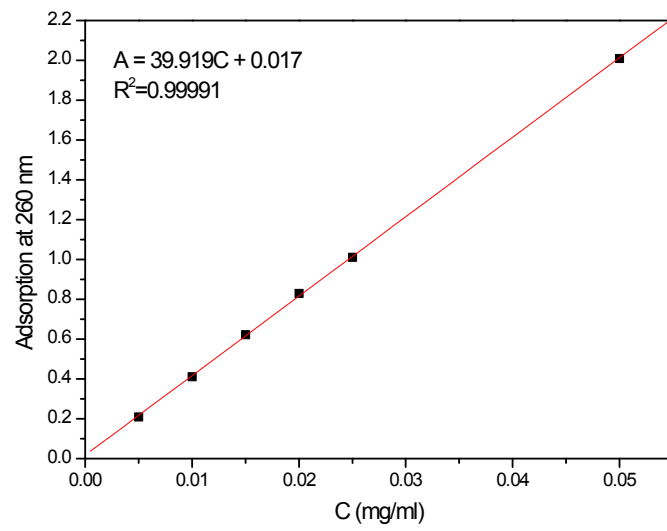


Fig. S4 Standard curve of CHX as a function of concentration at 260 nm.