

Fig. S1 HPLC fingerprint of Zhi-Zi-Da-Huang Decoction (ZZDHD) (258nm). Mobile phase: (A) 0.1% formic acid; (B) methanol; non-linear gradient elution. Peaks: (1) geniposide; (2) naringin; (3) neohesperidin; (4) daidzein; (5) rhein; (6) emodin.

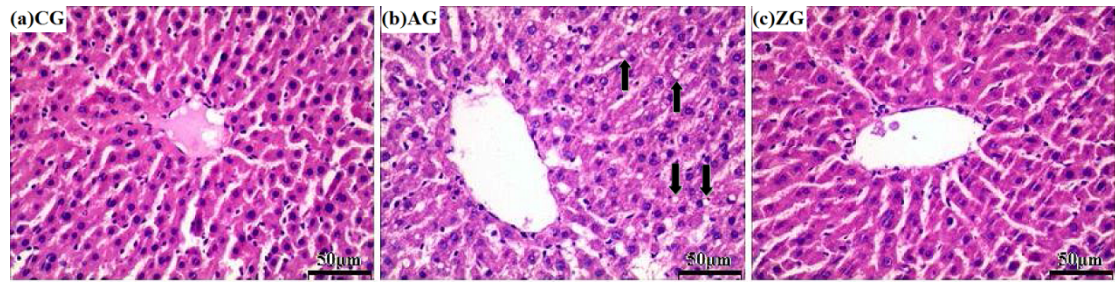


Fig. S2 Histopathology of liver of rats from control group (CG), alcohol group (AG) and ZZZDHD (ZG). Here are seen the lipid vacuoles within hepatocytes, and some typical fat particles were represented by arrows.