

Electronic Supplementary Information (ESI) for

MOF-derived nanostructured cobalt phosphide assemblies for efficient hydrogen evolution reaction

Lili Li,^{ab} Xingyue Li,^a Lunhong Ai,^{*a} and Jing Jiang,^{*a}

^a Chemical Synthesis and Pollution Control Key Laboratory of Sichuan Province, College of Chemistry and Chemical Engineering, China West Normal University, 1 Shida Road, Nanchong 637002, P.R. China.

^b i-Lab, Suzhou Institute of Nano-Tech and Nano-Bionics (SINANO), Chinese Academy of Sciences (CAS), 398 Ruoshui Road, Suzhou, 215123, P.R. China

E-mail: ah_aihong@163.com (L. Ai); 0826zjjh@163.com (J. Jiang); Tel/Fax: +86-817-2568081

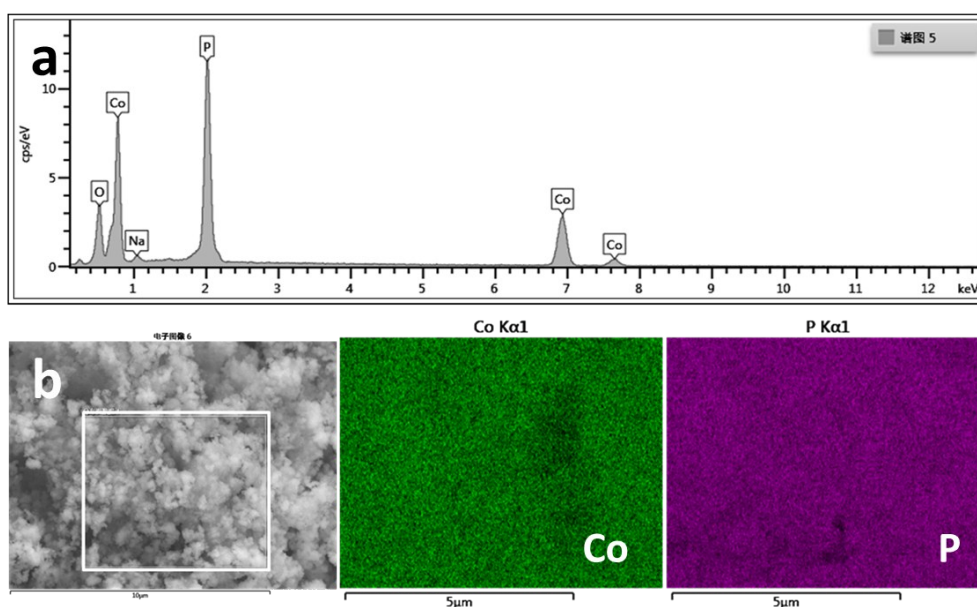


Fig. S1 EDS spectrum (a) and EDS-mapping images (b) of the CoP NRAs.

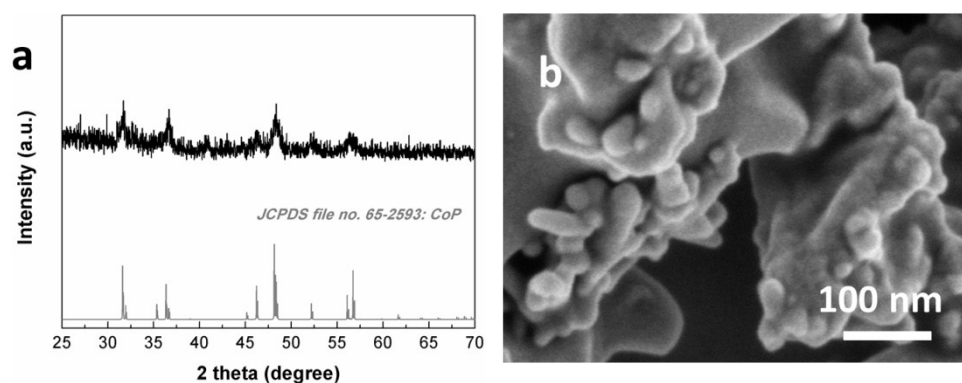


Fig. S2 XRD pattern (a) and SEM image (b) of the CoP NRAs after electrolysis.