

Supporting information

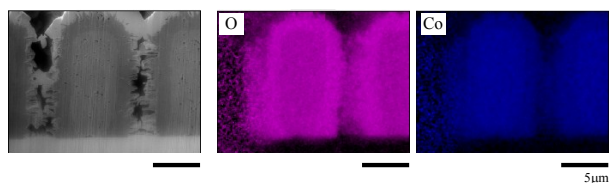


Figure S1. SEM-EDS image with elemental mapping of O and Co in the Co dot array directly deposited on Pt substrate after heating at 500°C for 10h in a molten LiNO<sub>3</sub>.

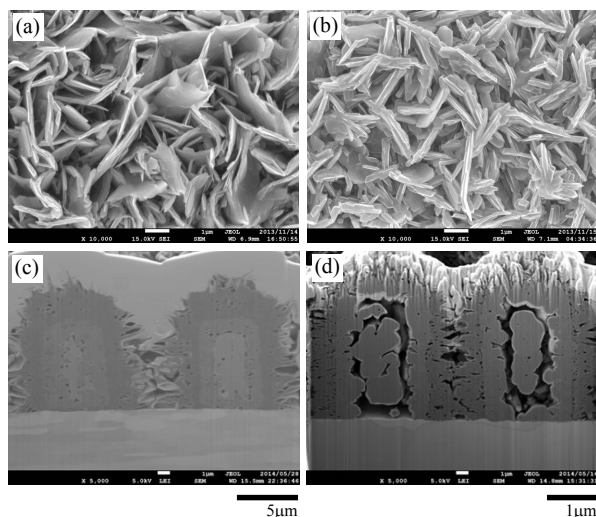


Figure S2. Changes in the surface and cross-sectional SEM images of the LiCoO<sub>2</sub> dot arrays the Co dot array directly deposited on Pt substrate: (a, c) as prepared arrays at 500°C for 10h in molten LiNO<sub>3</sub>, (b, d) after annealing at 700°C for 1h.

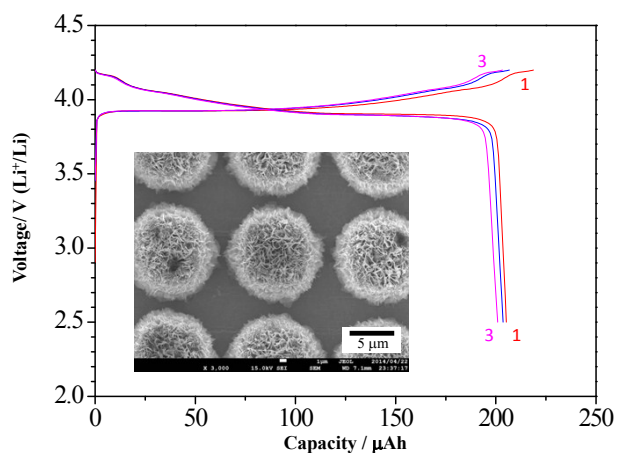


Figure S3. First 3 charge and discharge curves of the 7 μm-LiCoO<sub>2</sub> dot array electrode.