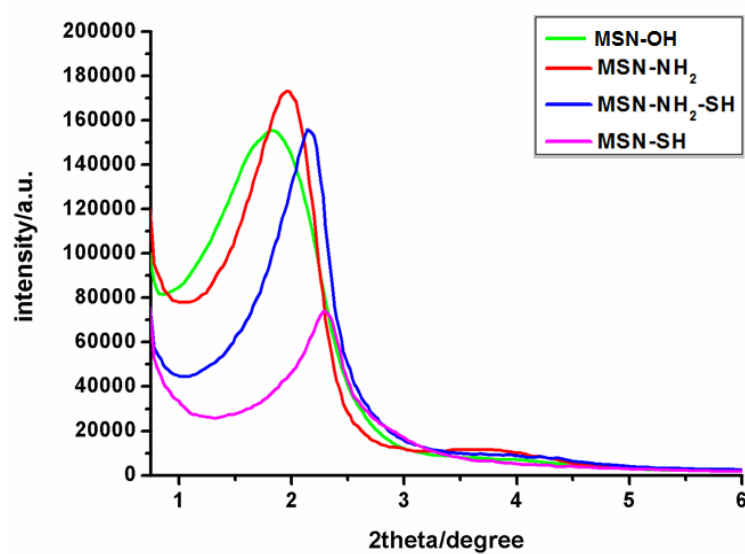
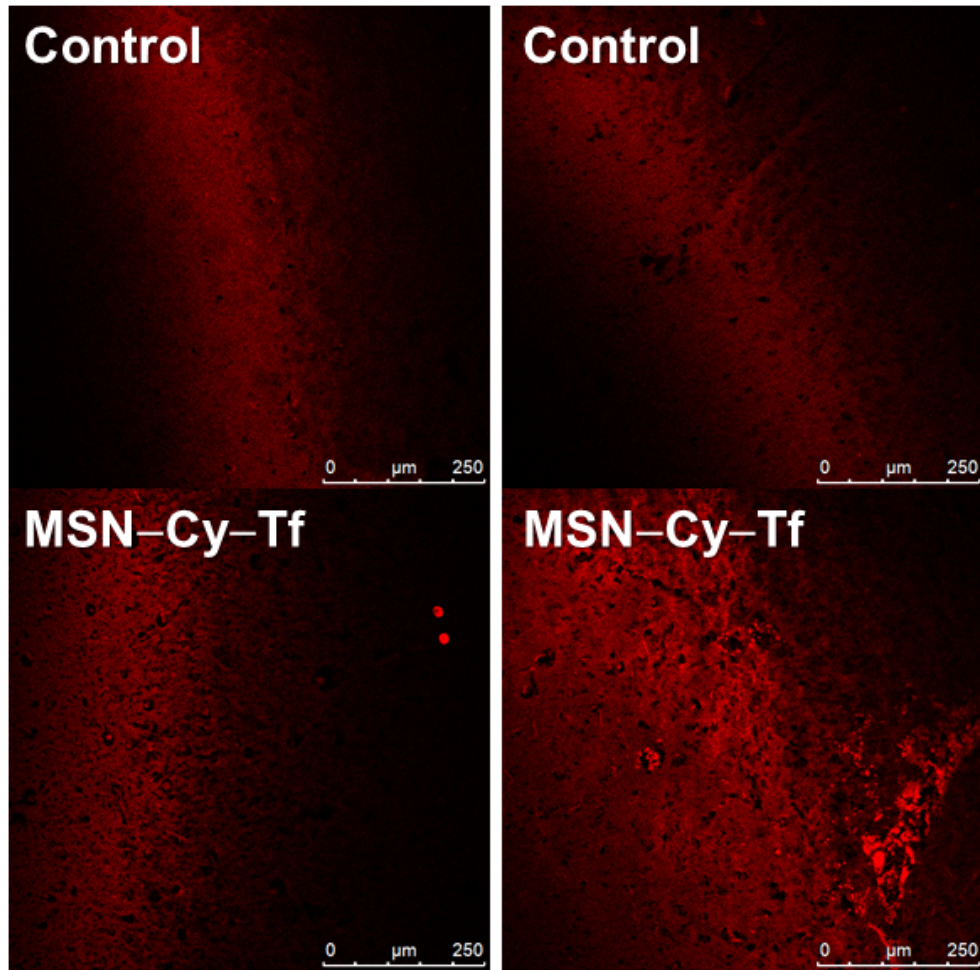


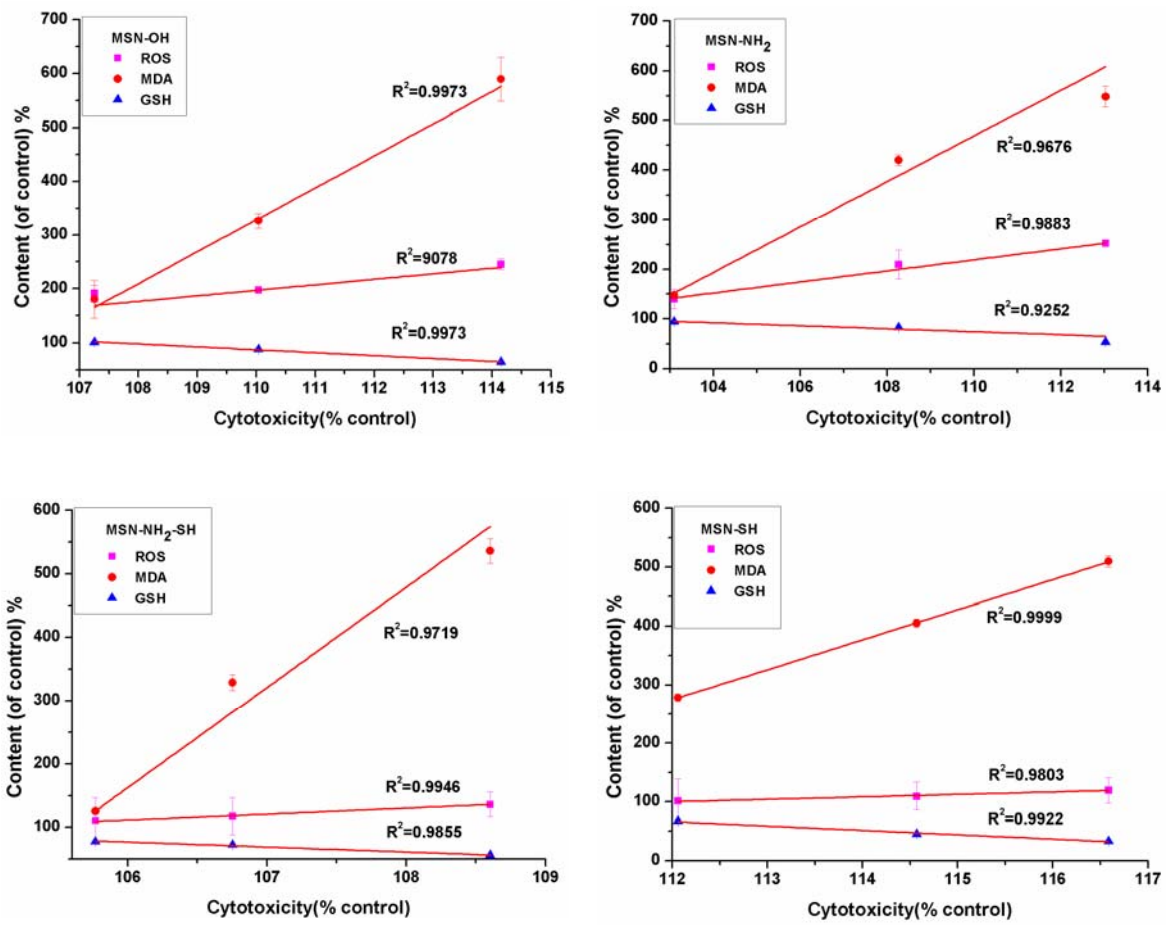
**Implication for blood-brain barrier permeability, *in vitro* oxidative stress and neurotoxicity potential induced by mesoporous silica nanoparticles: effects of surface modification**



**Fig. S1.** The XRD patterns of MSNs with different surface groups.



**Fig. S2.** The fluorescent images of superficial layer (left) and deeper layer (right) in brain tissue.



**Fig. S3.** Correlation between cytotoxicity and oxidative biomarkers in various surface modified silica nanoparticles at the designed concentrations tested for biomarkers measurement.