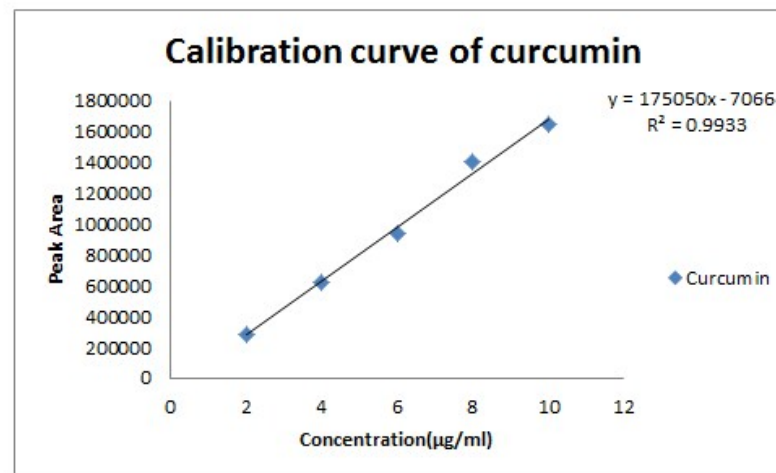
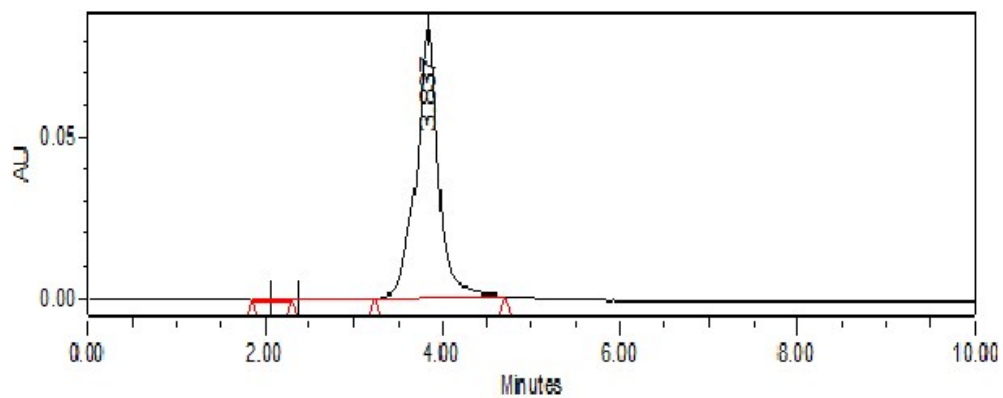


Supplementary figures

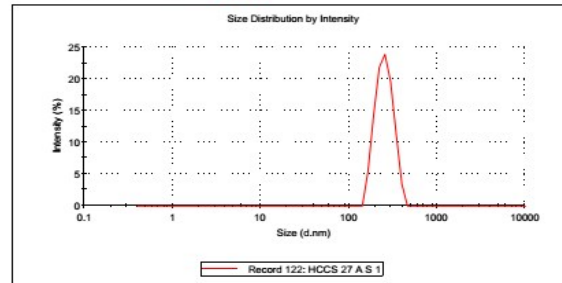


Supplementary figure 1: Graph showing the calibration curve of Curcumin

a.

	Diam. (nm)	% Intensity	Width (nm)
Z-Average (d.nm): 271.8	Peak 1: 255.7	100.0	56.45
Pdl: 0.395	Peak 2: 0.000	0.0	0.000
Intercept: 0.810	Peak 3: 0.000	0.0	0.000

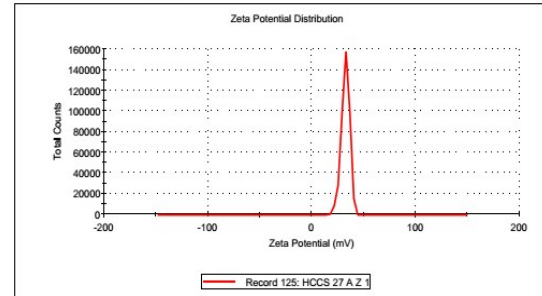
Result quality : Refer to quality report



b.

	Mean (mV)	Area (%)	Width (mV)
Zeta Potential (mV): 32.4	Peak 1: 32.4	100.0	3.99
Zeta Deviation (mV): 3.99	Peak 2: 0.00	0.0	0.00
Conductivity (mS/cm): 0.112	Peak 3: 0.00	0.0	0.00

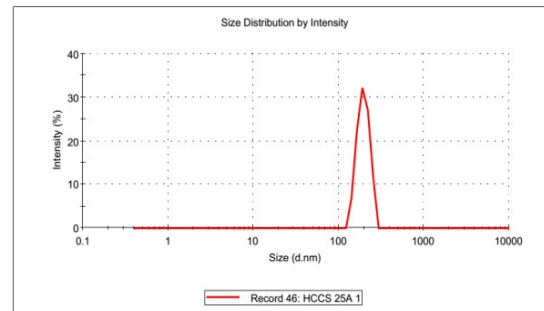
Result quality : Good



c.

	Diam. (nm)	% Intensity	Width (nm)
Z-Average (d.nm): 338.2	Peak 1: 196.7	100.0	31.62
Pdl: 0.352	Peak 2: 0.000	0.0	0.000
Intercept: 0.669	Peak 3: 0.000	0.0	0.000

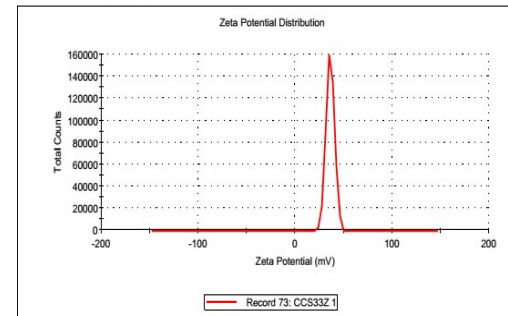
Result quality : Refer to quality report



d.

	Mean (mV)	Area (%)	Width (mV)
Zeta Potential (mV): 36.0	Peak 1: 36.0	100.0	4.34
Zeta Deviation (mV): 4.34	Peak 2: 0.00	0.0	0.00
Conductivity (mS/cm): 0.387	Peak 3: 0.00	0.0	0.00

Result quality : Good



Supplementary figure 2: Size, PDI and zeta potential of CUR-CH-NPS and CUR-B-CH-NPs