

Supporting Information for:

**Hierarchical Microspheres: In situ Assembly of CdS Quantum Dots on Cd<sub>2</sub>SnO<sub>4</sub> Nanosheets with Enhanced Visible Light Photocatalytic Properties**

Guimin Zhang<sup>a</sup>, Zhengyi Fu<sup>b,\*</sup>, Yucheng Wang<sup>b</sup>, Hao Wang<sup>b</sup>

<sup>a</sup> School of Chemistry, Chemical Engineering and Life Science, Wuhan University of Technology, Wuhan 430070, China

<sup>b</sup> State Key Lab of Advanced Technology for Materials Synthesis and Processing, Wuhan University of Technology, Wuhan 430070, China

\*E-mail: zyfu@whut.edu.cn

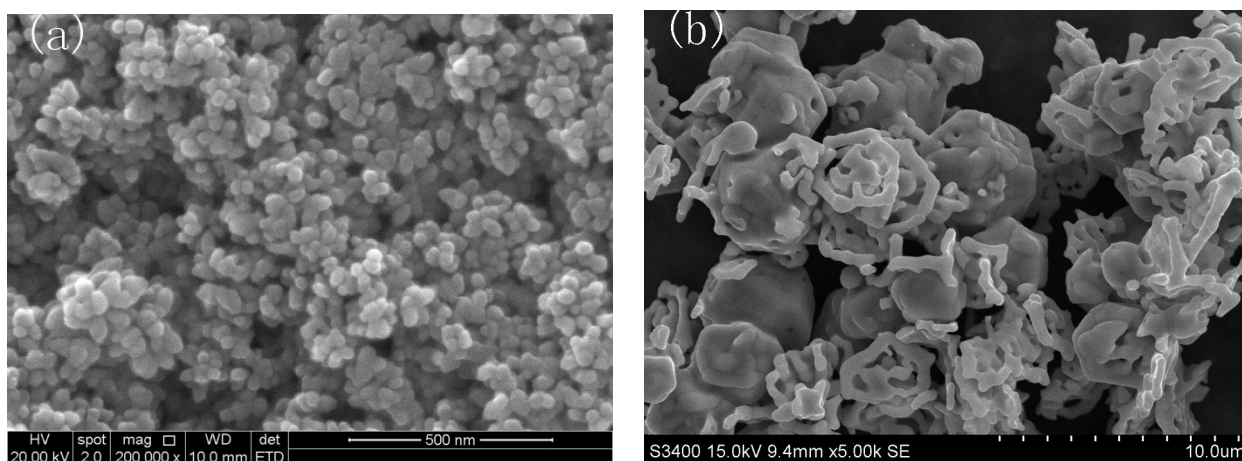


Fig. S1 SEM images of (a) pure CdS and (b) pure Cd<sub>2</sub>SnO<sub>4</sub>, which are the same phase with CdS and Cd<sub>2</sub>SnO<sub>4</sub> of the CdS/Cd<sub>2</sub>SnO<sub>4</sub> composite.

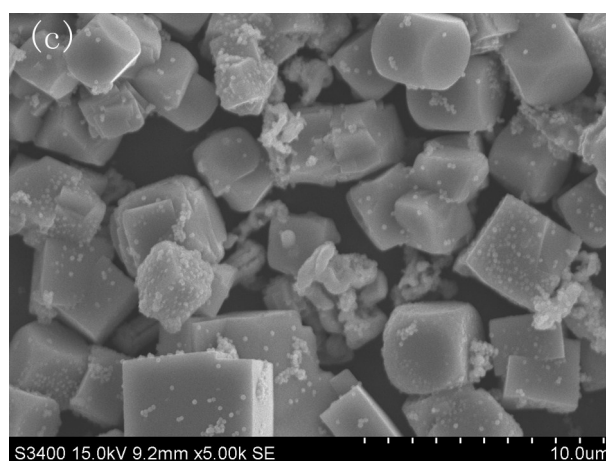
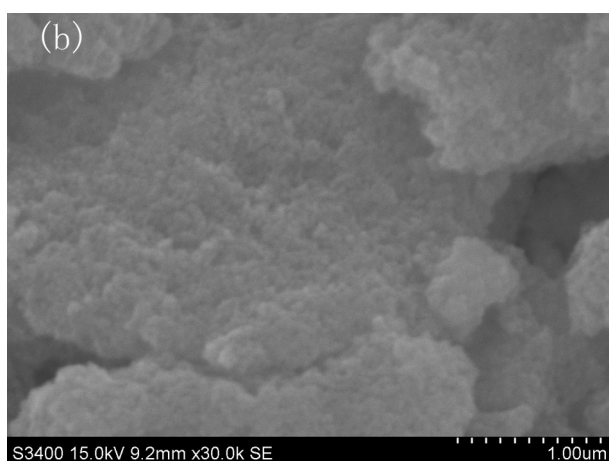
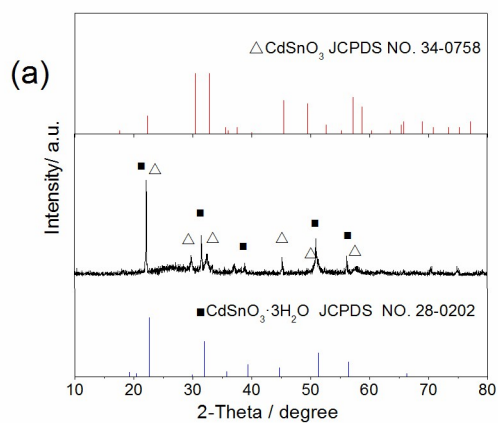


Fig. S2 (a) Powder XRD patterns of solvothermal product from mixture without L-cysteine under the similar conditions to the CdS/Cd<sub>2</sub>SnO<sub>4</sub> composite. SEM images of precipitation from mixture without L-cysteine (b) before solvothermal, (c) after solvothermal.

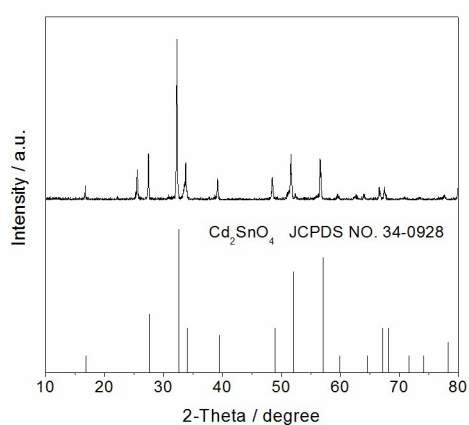


Fig. S3 Powder XRD patterns of pure Cd<sub>2</sub>SnO<sub>4</sub> prepared by using strong basic NaOH aqueous solution in a hydrothermal process.

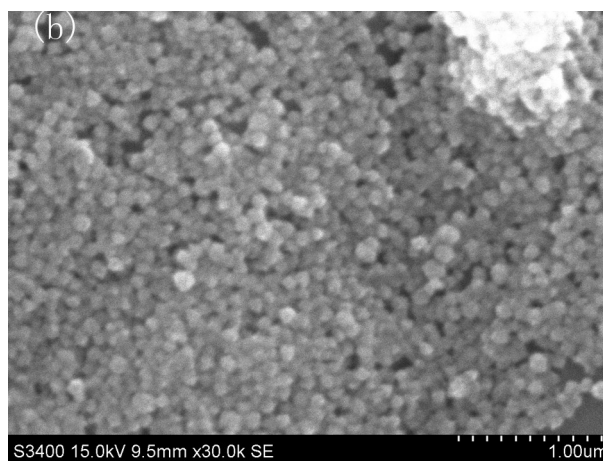
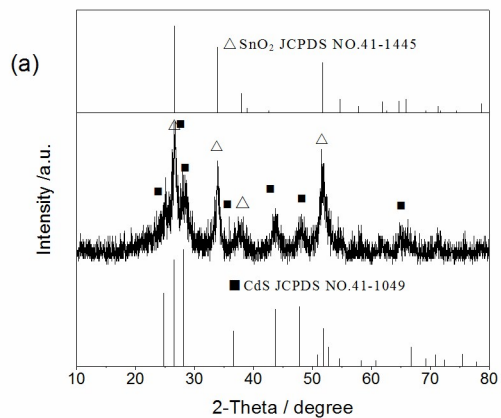


Fig. S4 (a) Powder XRD patterns, (b) SEM image of product prepared by using SnCl<sub>4</sub>·5H<sub>2</sub>O instead of SnCl<sub>2</sub>·2H<sub>2</sub>O.