

Synthesis and characterization of pyrimidine-containing hexaarylbenzene derivatives

Dengqing Zhang*^[a], Gang Wang^[a], Rong Li^[a], Xianying Li*^[b], Yunjie Xiang^[a], Zhen Zhang^[a], Wusong Jin*^[a]

[a] College of Chemistry, Chemical Engineering and Biotechnology, Donghua University, 2999 North Renmin Road, Songjiang, Shanghai 201620, P. R. China

[b] School of Environmental Science and Engineering, Donghua University, 2999 North Renmin Road, Songjiang, Shanghai 201620, P. R. China

E-mail: dqzhang@dhu.edu.cn; seanlee@dhu.edu.cn; wsjin@dhu.edu.cn

Supporting contents.

1. ¹H NMR, ¹³C NMR and MALDI-TOF mass spectra (Figure S1-S19)
2. Photograph of TLC (Figure S20)

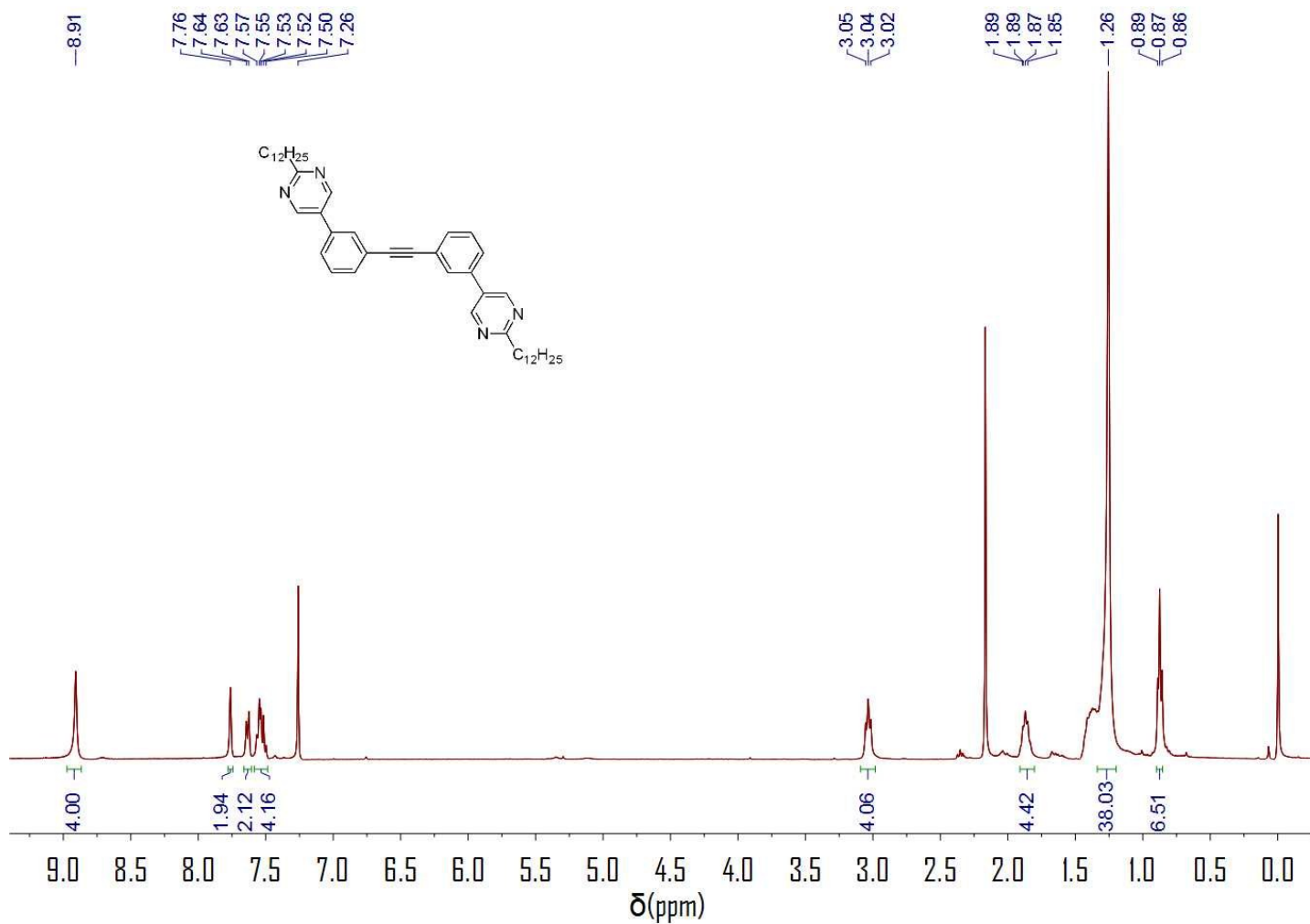


Figure S1. ^1H NMR spectra of **6** (400 MHz, CDCl_3).

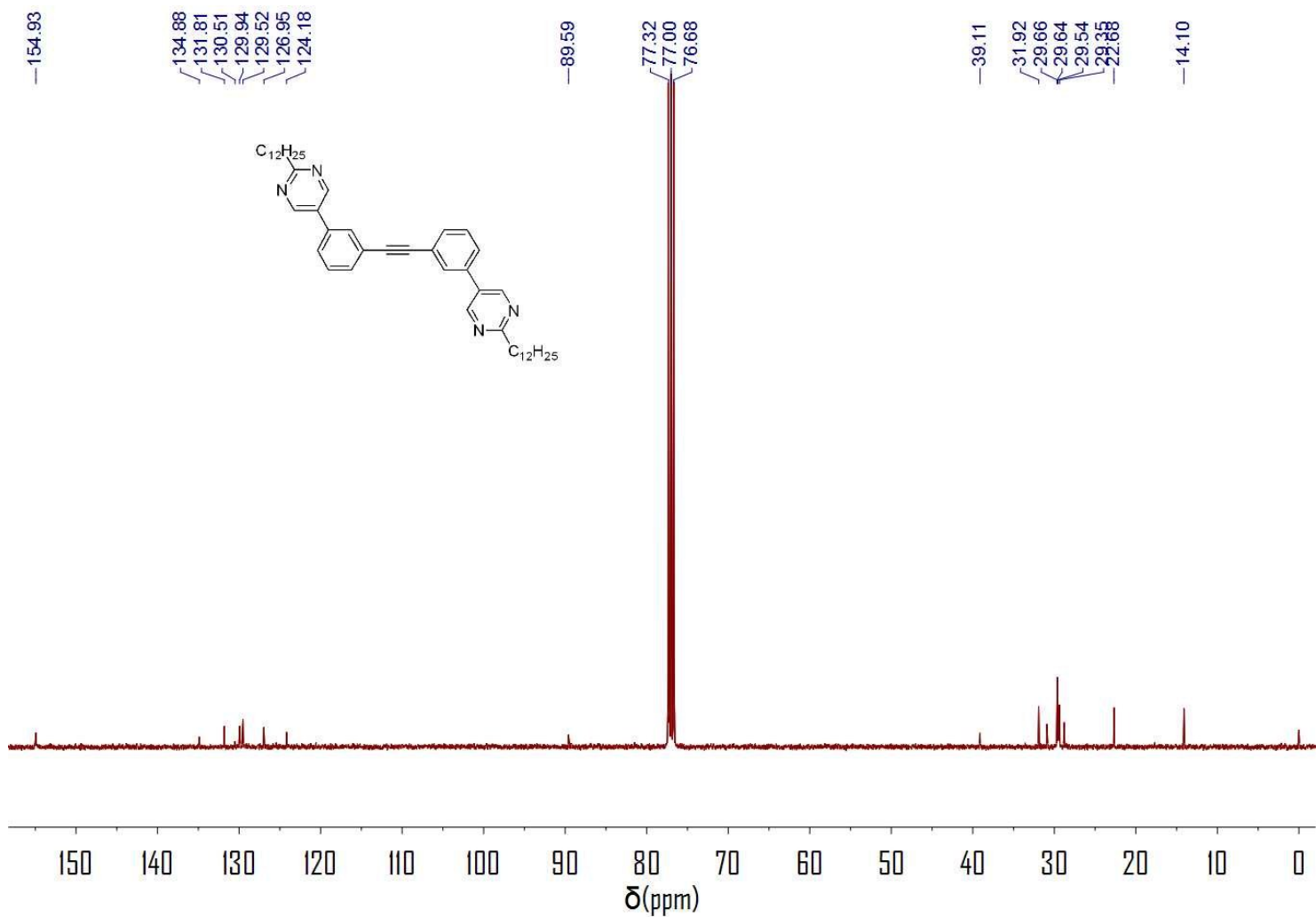


Figure S2. ^{13}C NMR spectra of **6** (400 MHz, CDCl_3).

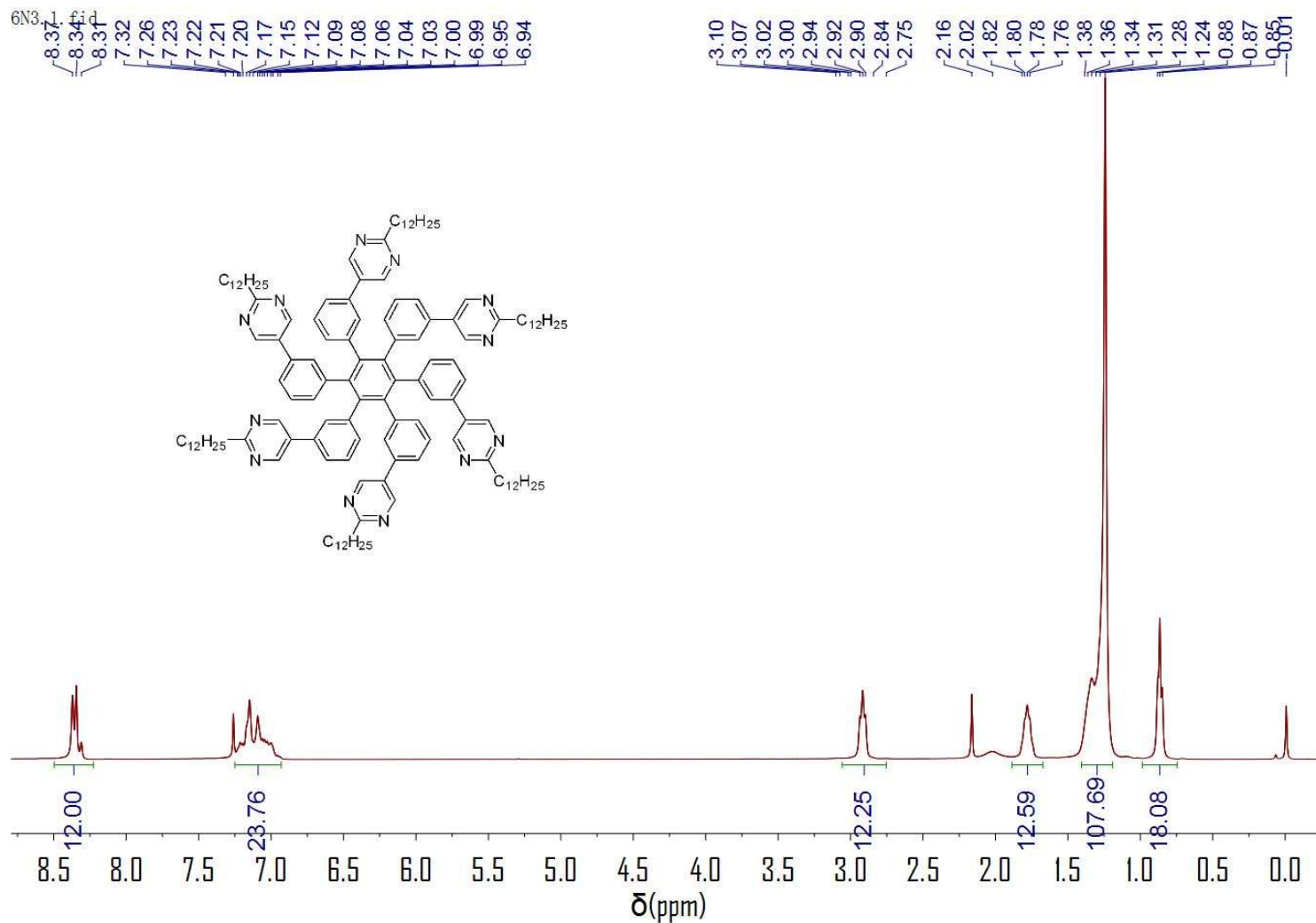


Figure S3. ^1H NMR spectra of **1** (400 MHz, CDCl_3)

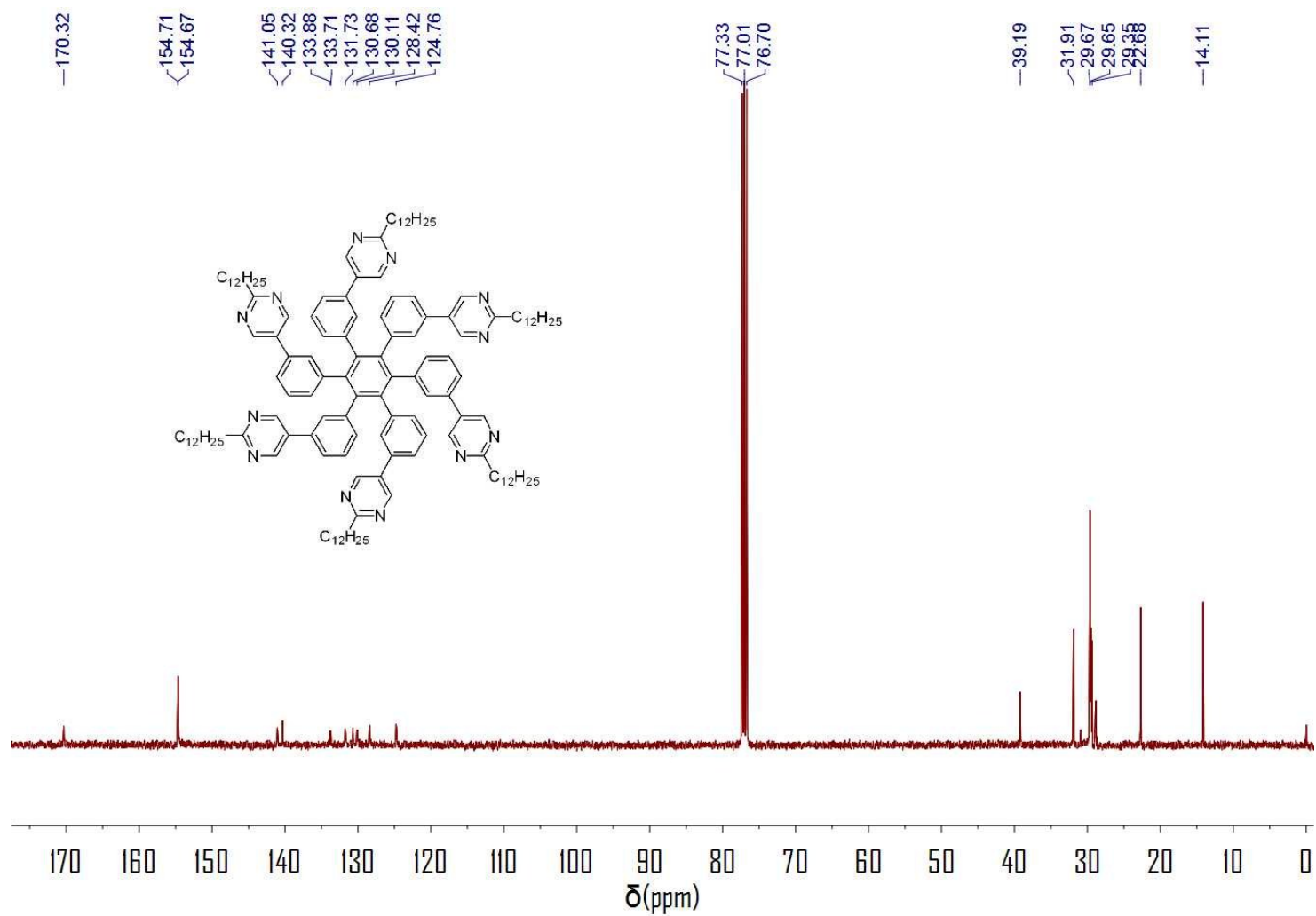


Figure S4. ^{13}C NMR spectra of **1** (400 MHz, $CDCl_3$).

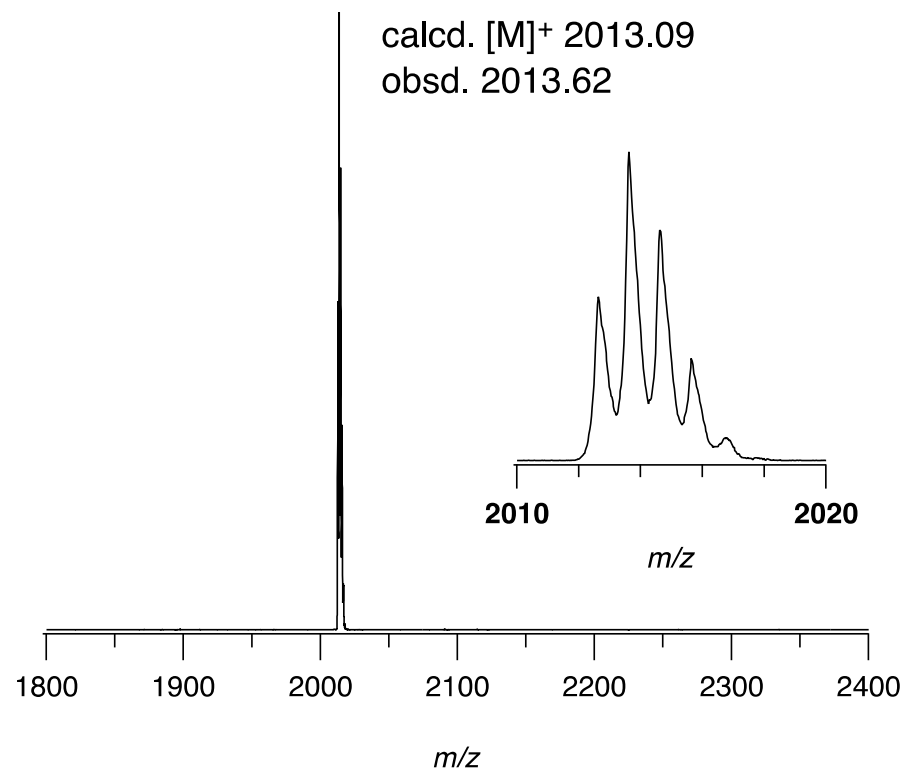


Figure S5. MALDI-TOF mass spectrum of **1**.

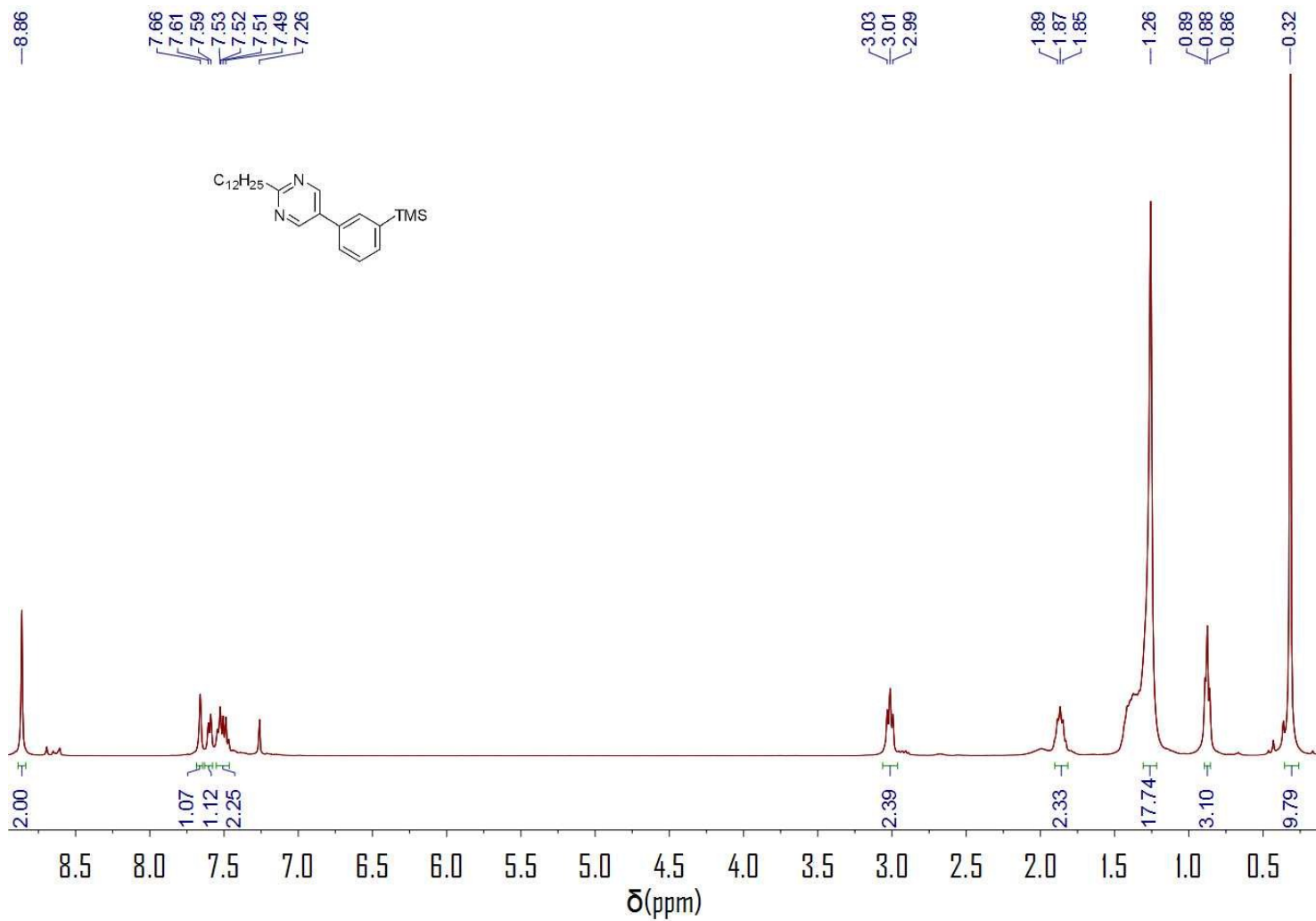


Figure S6. ^1H NMR spectra of **9** (400 MHz, CDCl_3).

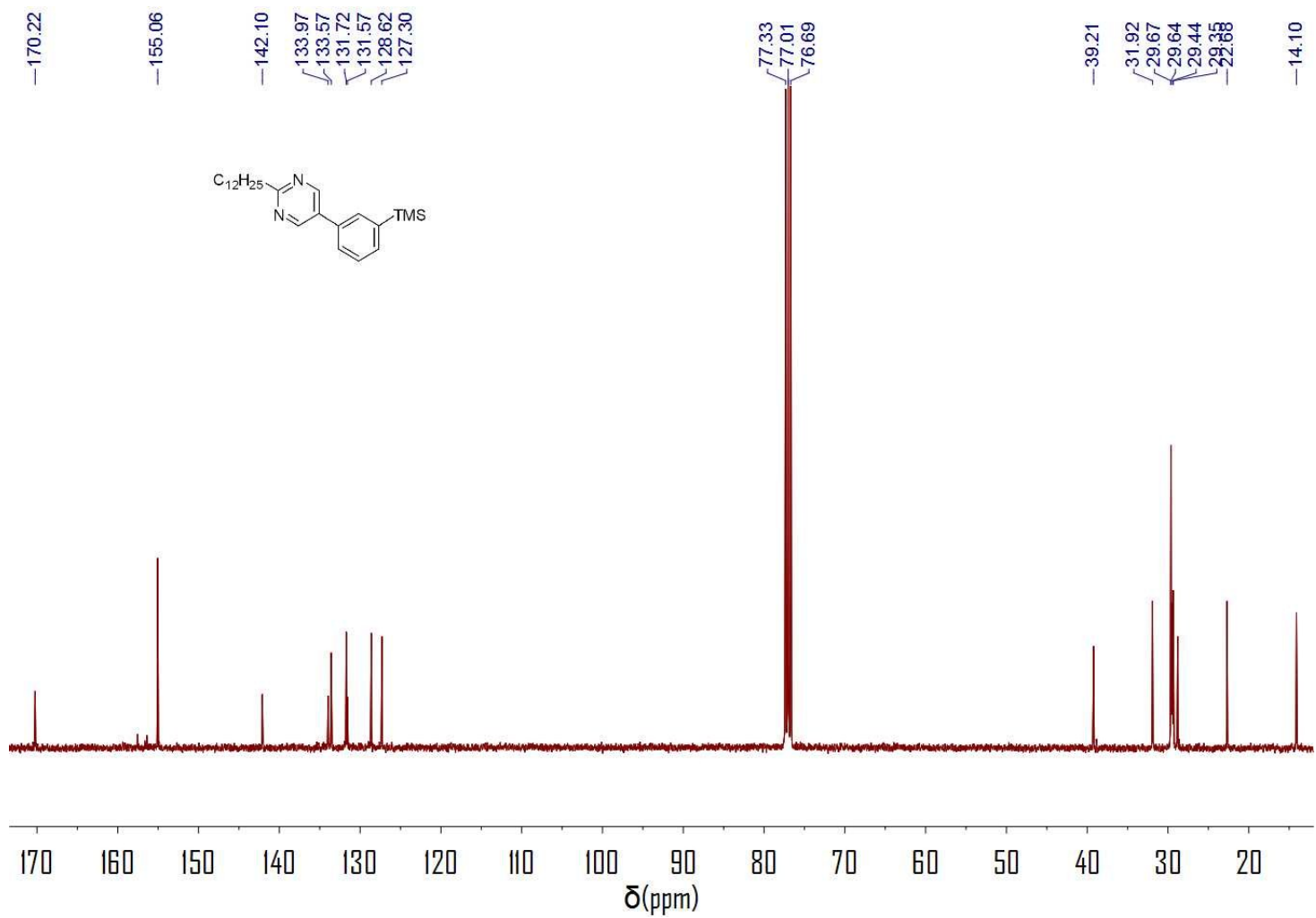


Figure S7. ^{13}C NMR spectra of **9** (400 MHz, CDCl_3).

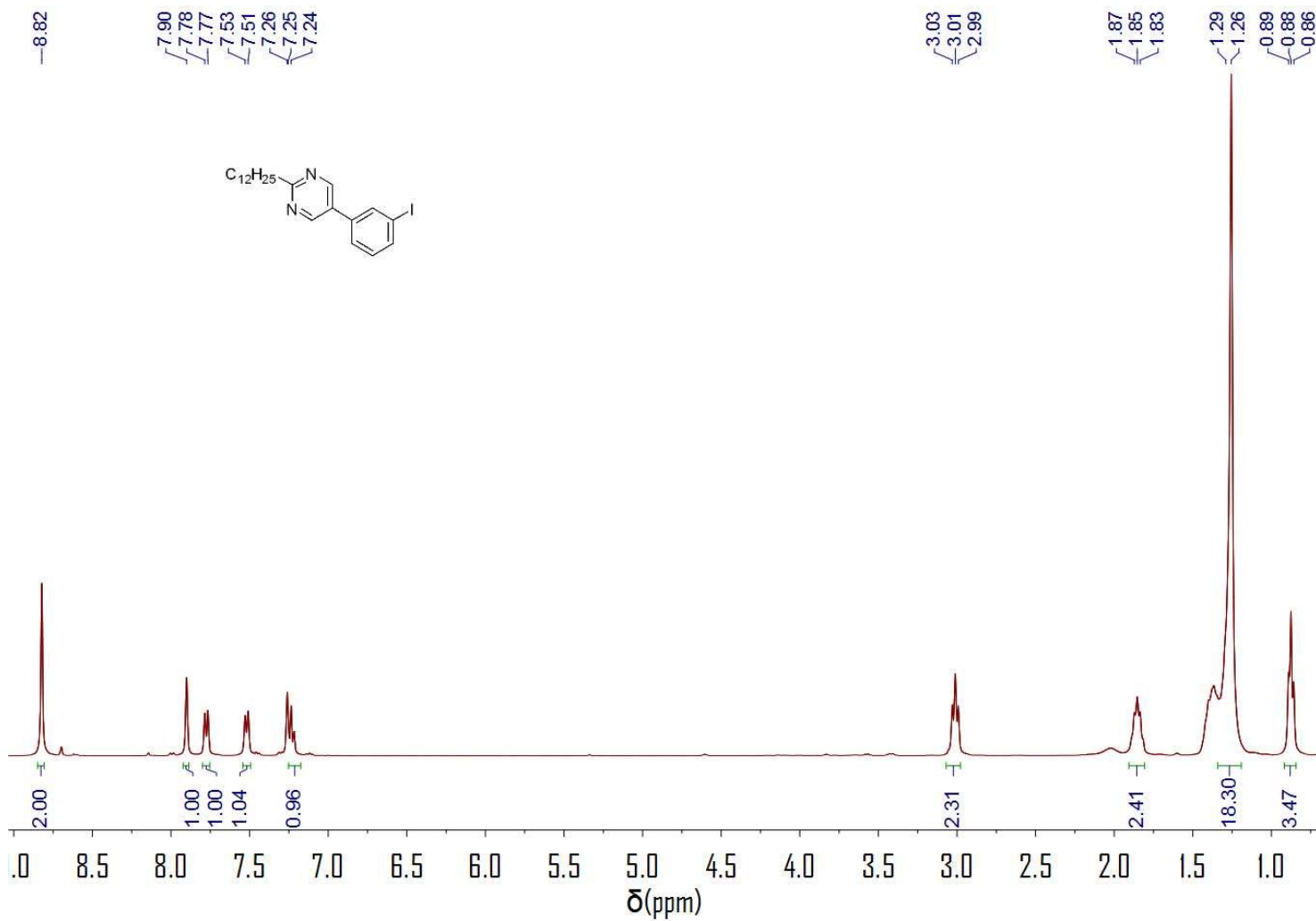


Figure S8. ^1H NMR spectra of **10** (400 MHz, CDCl_3).

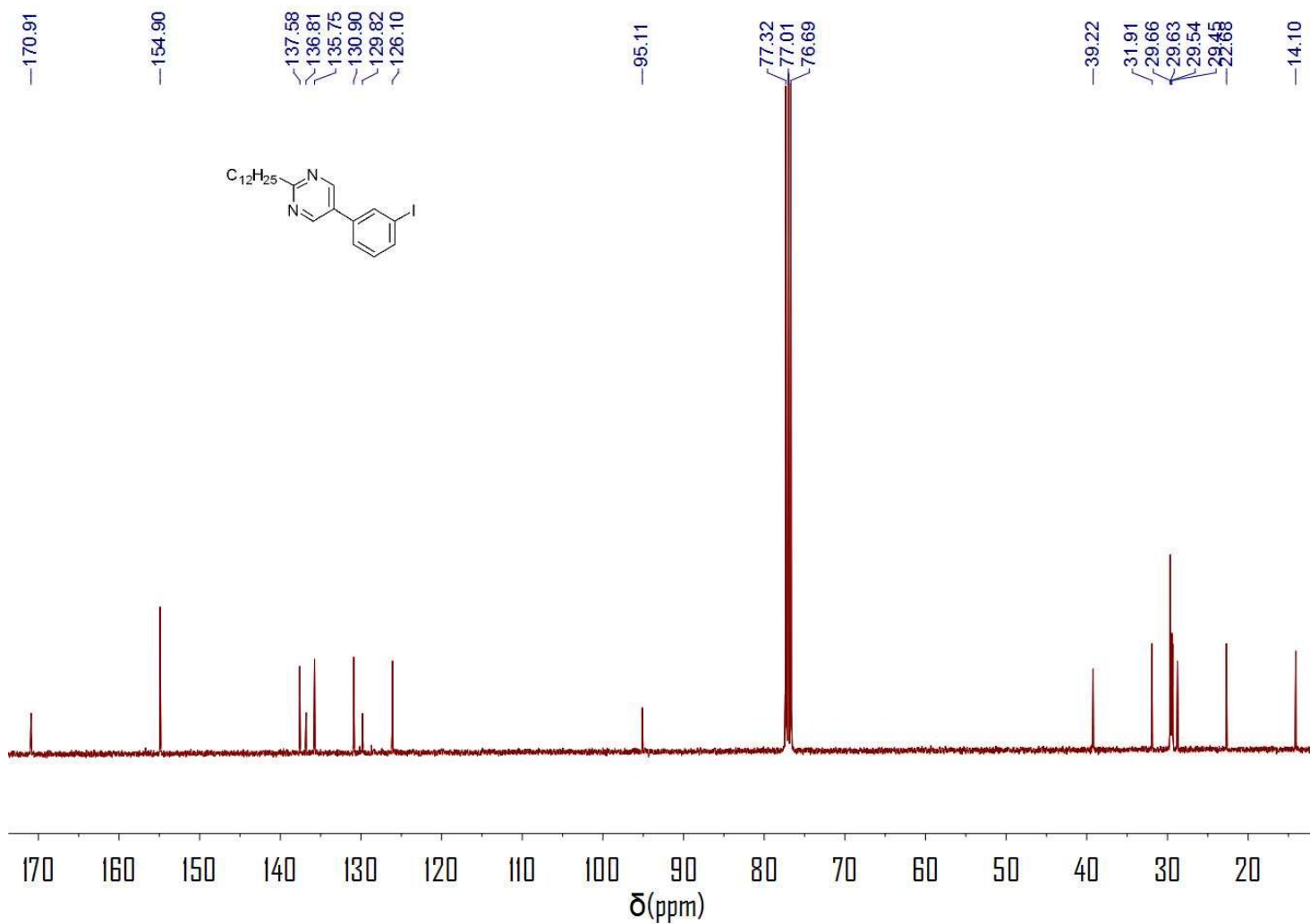


Figure S9. ^{13}C NMR spectra of **10** (400 MHz, CDCl_3).

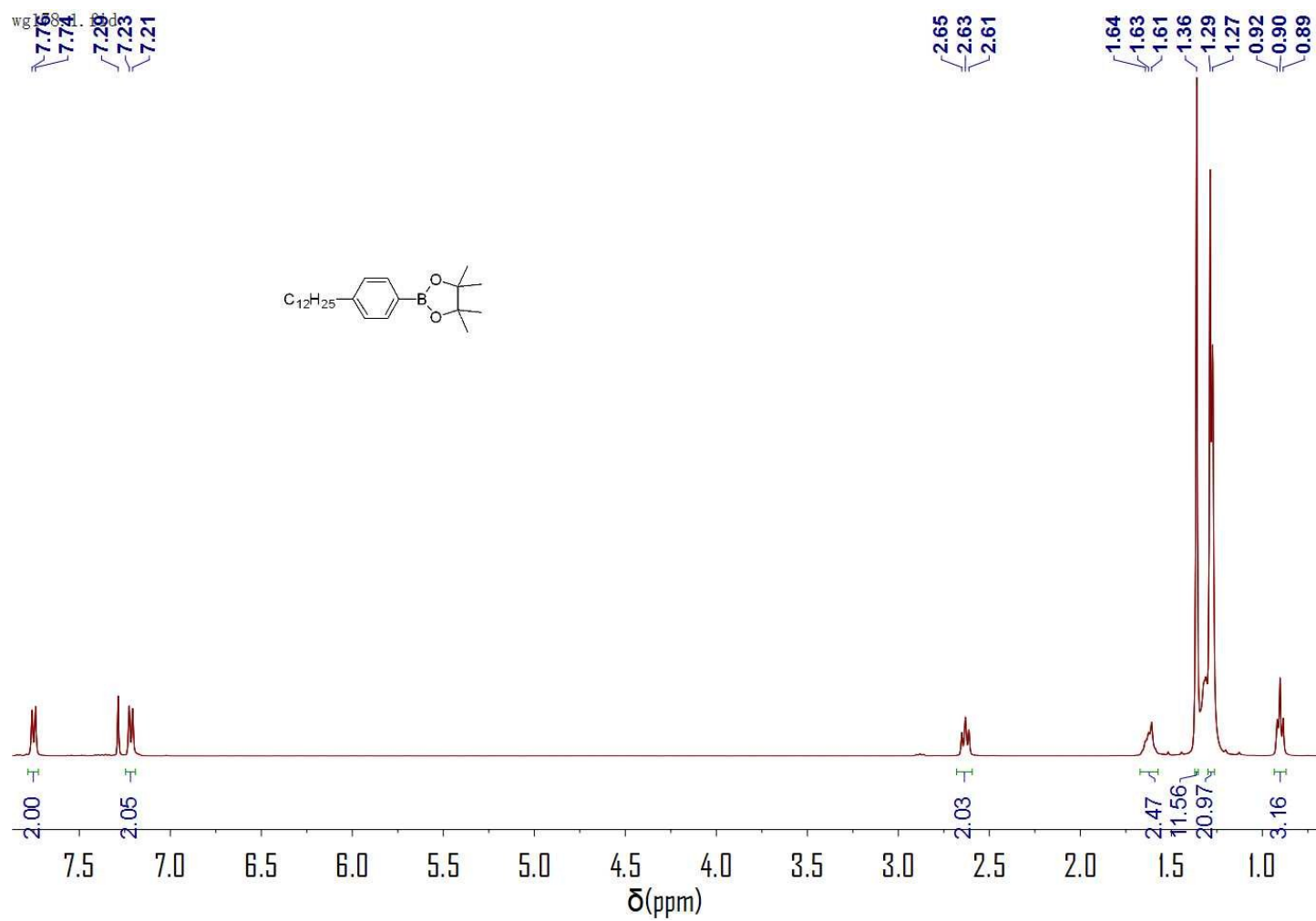


Figure S10. ^1H NMR spectra of **11** (400 MHz, CDCl_3).

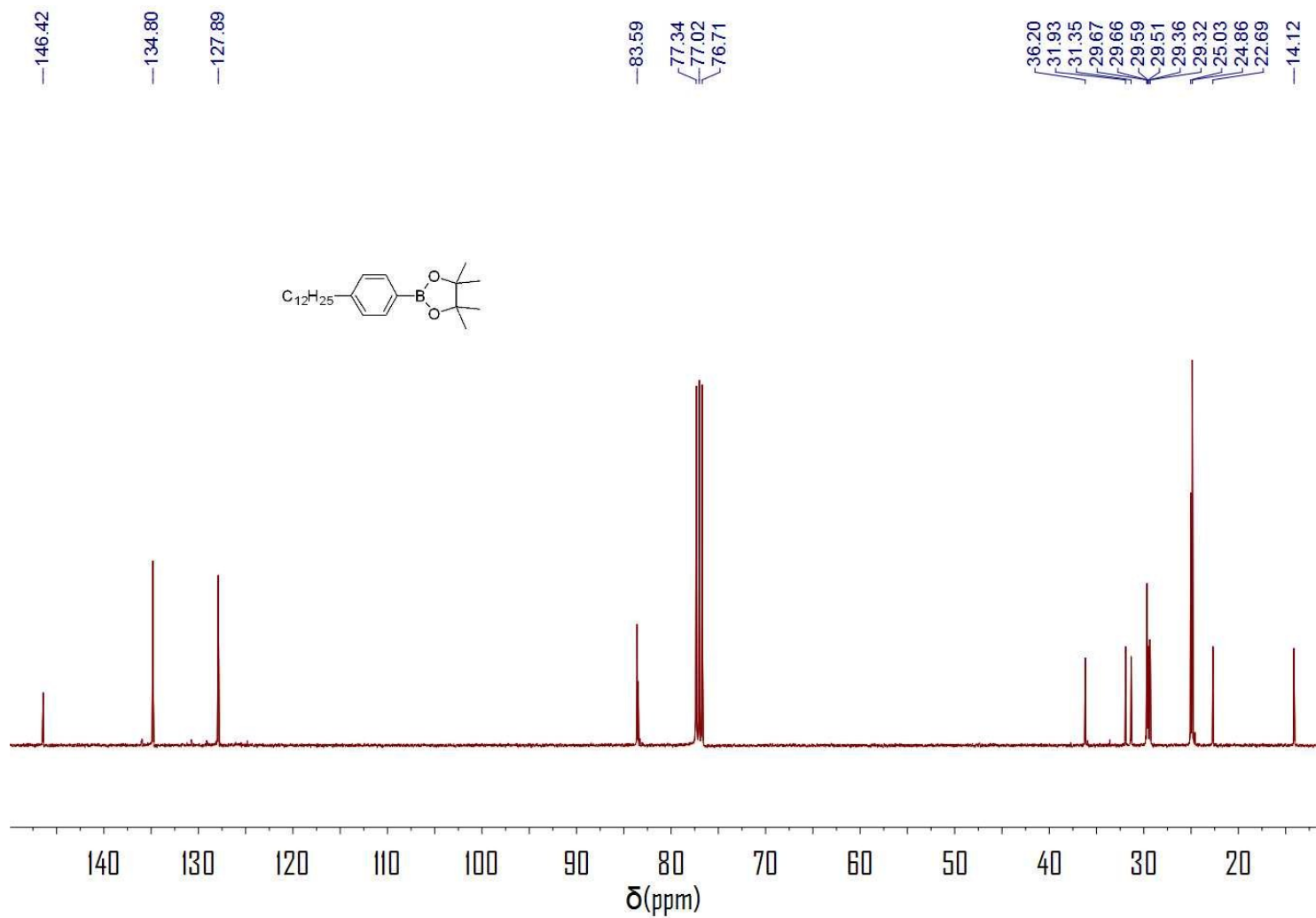


Figure S11. ^{13}C NMR spectra of **11** (400 MHz, CDCl_3).

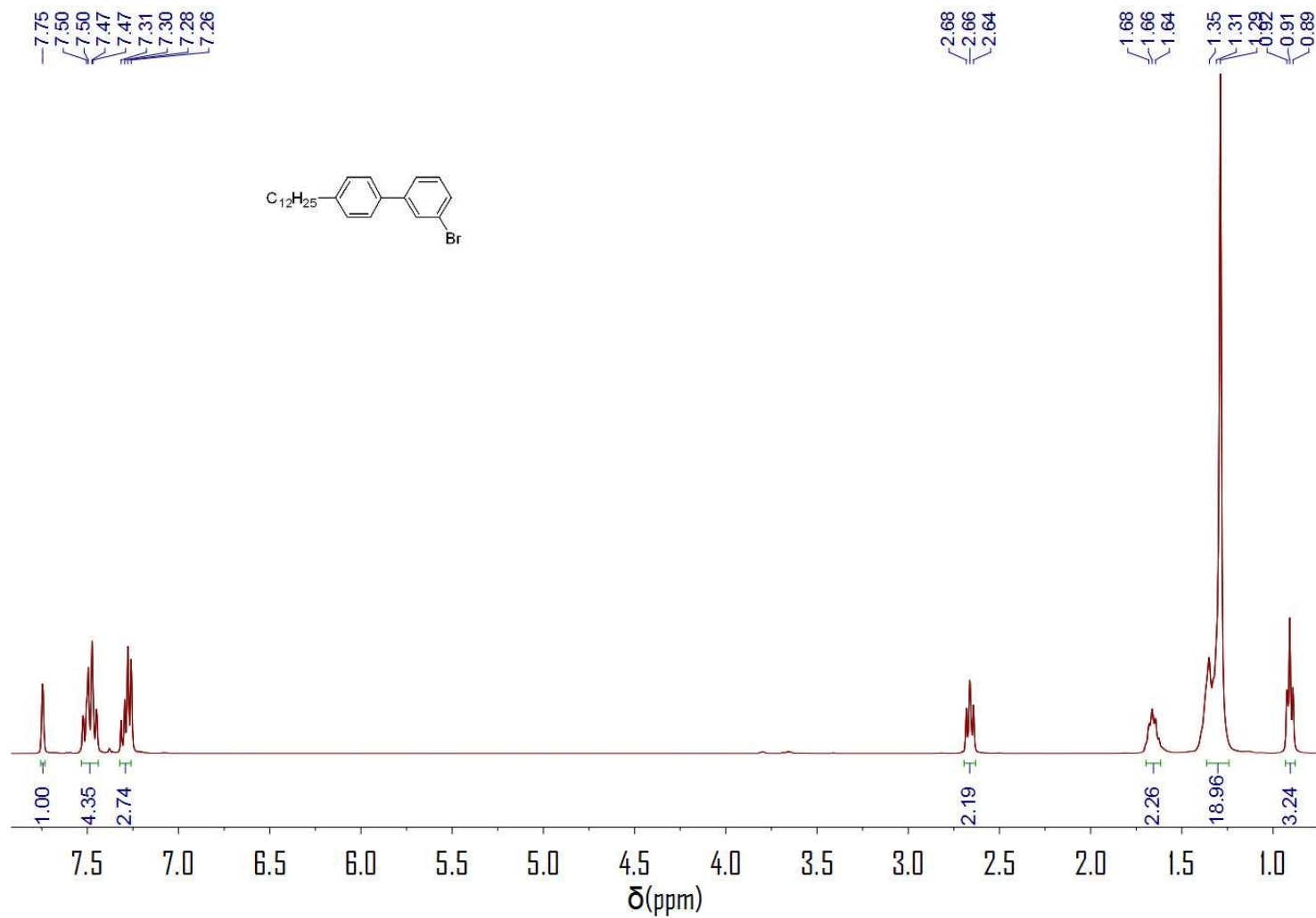


Figure S12. ^1H NMR spectra of **12** (400 MHz, CDCl_3).

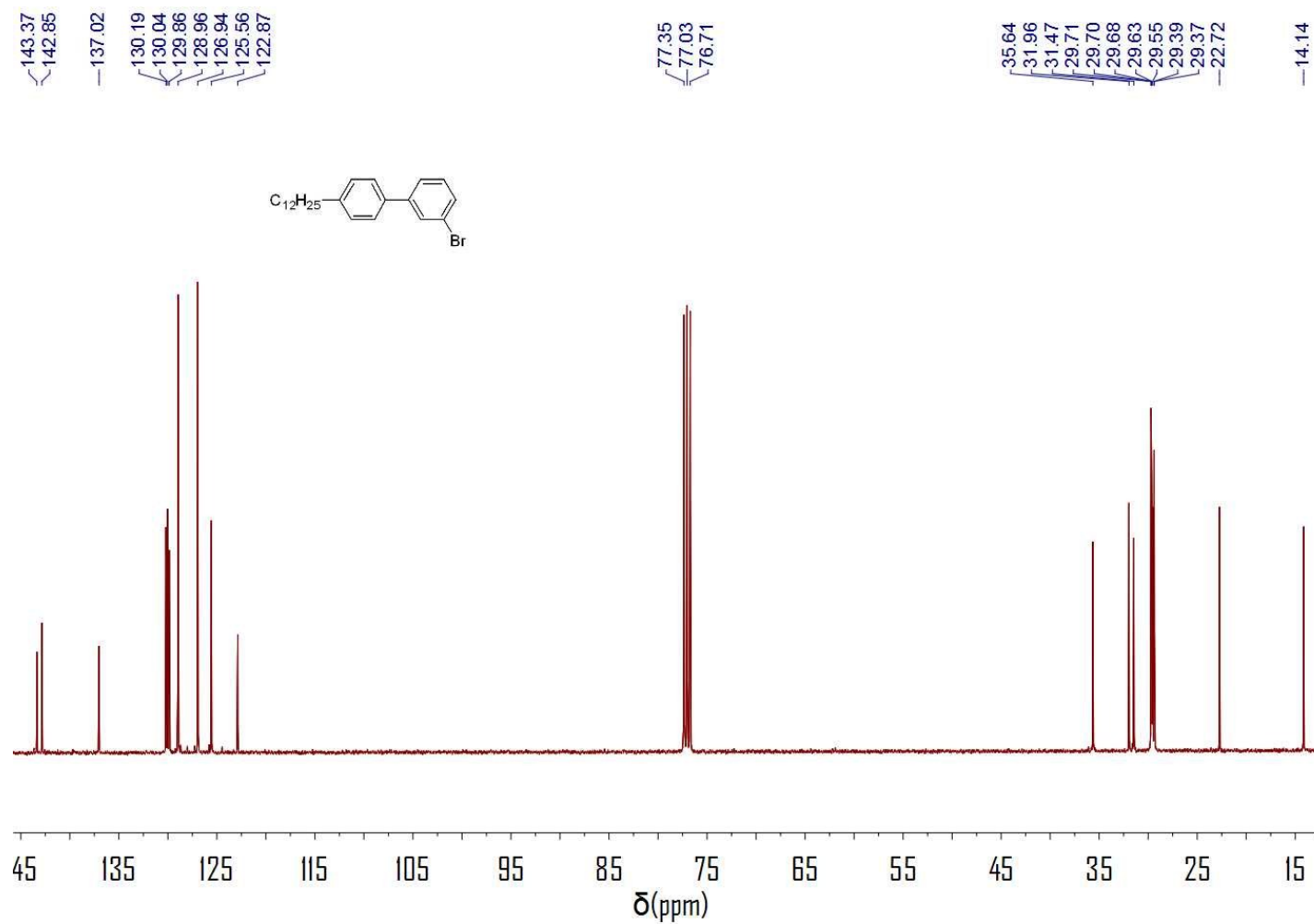


Figure S13. ^{13}C NMR spectra of **12** (400 MHz, CDCl_3).

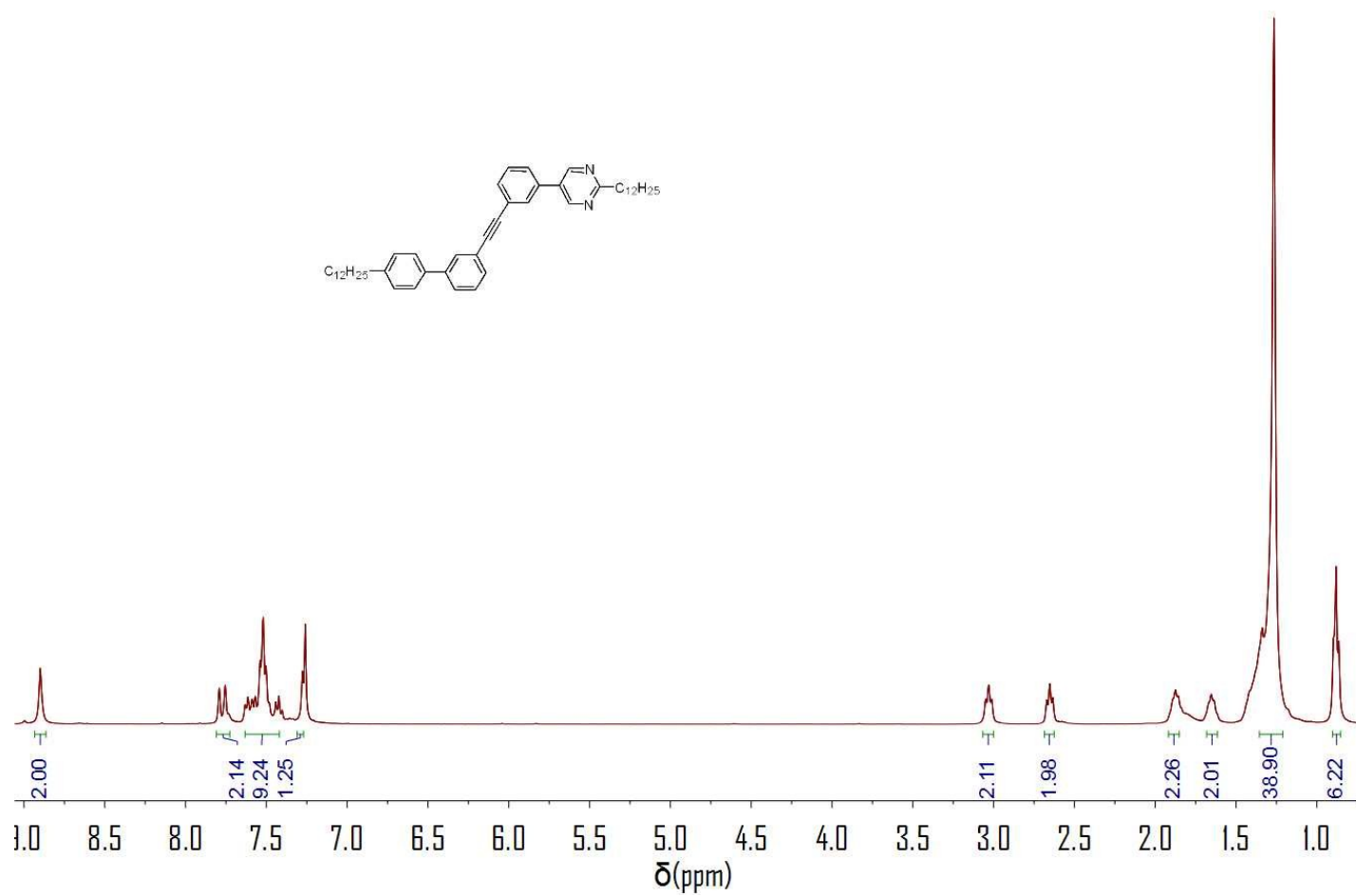


Figure S14. ¹H NMR spectra of **15** (400 MHz, CDCl₃).

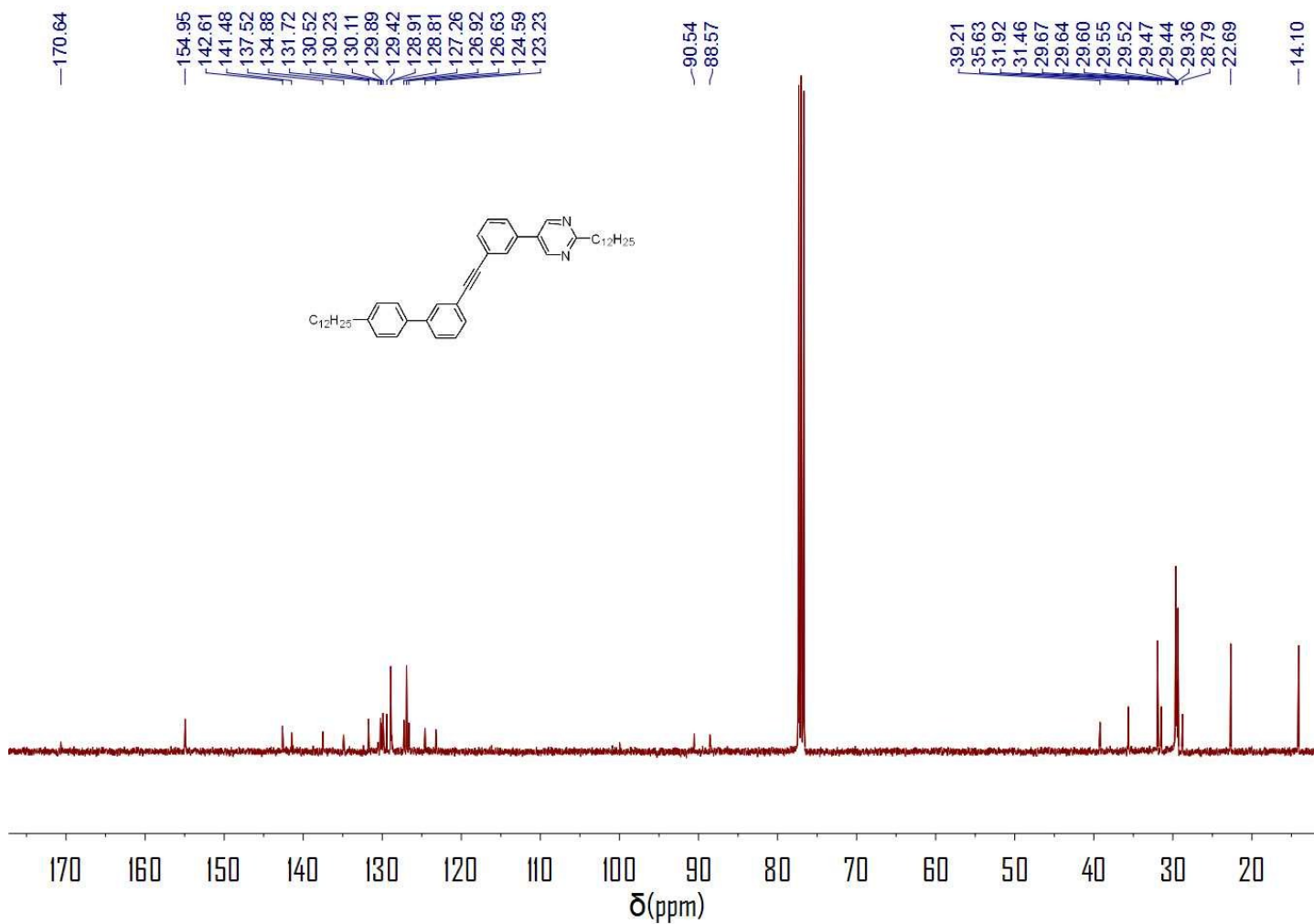


Figure S15. ^{13}C NMR spectra of **15** (400 MHz, CDCl_3).

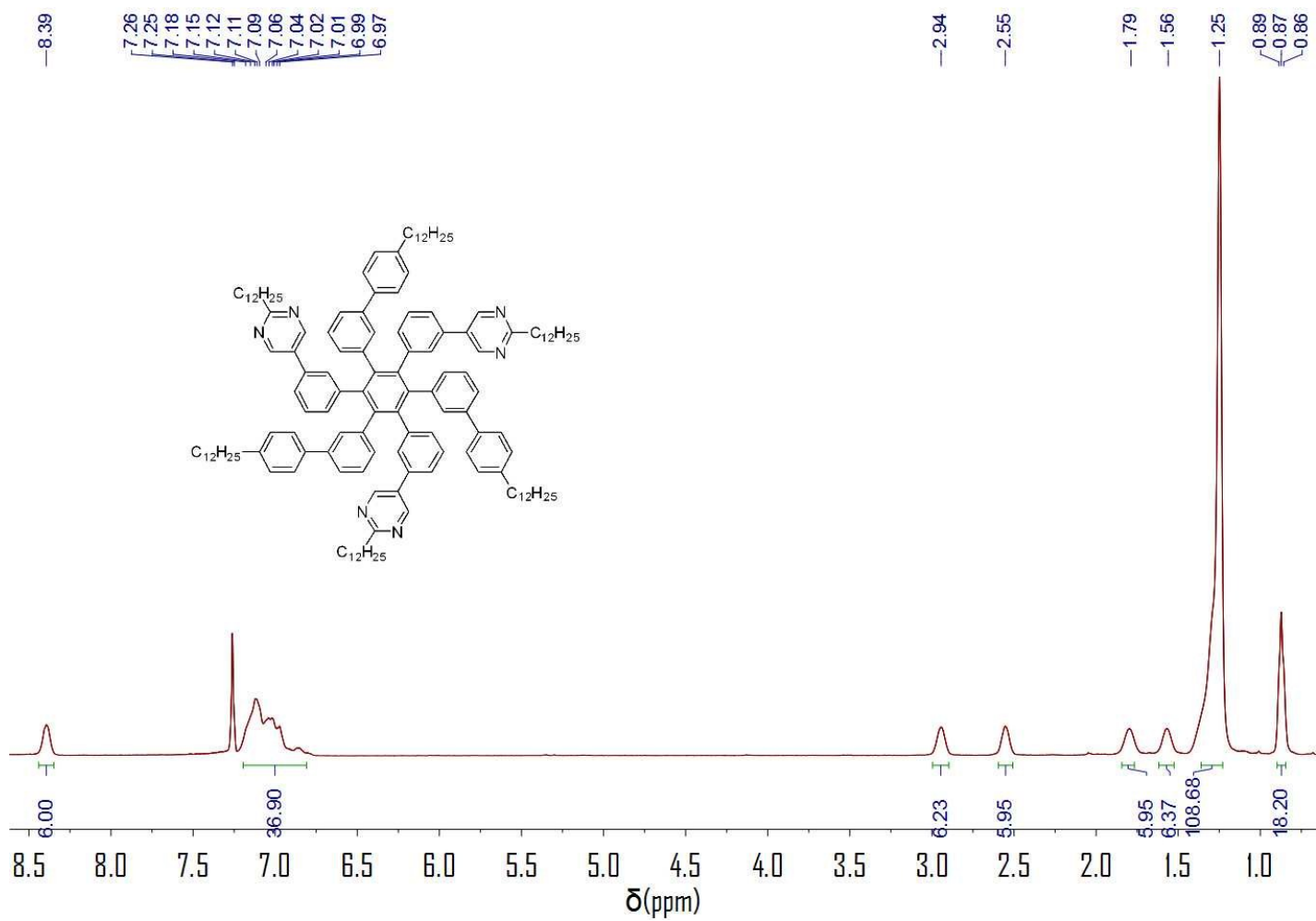


Figure S16. 1H NMR spectra of **2** (400 MHz, $CDCl_3$).

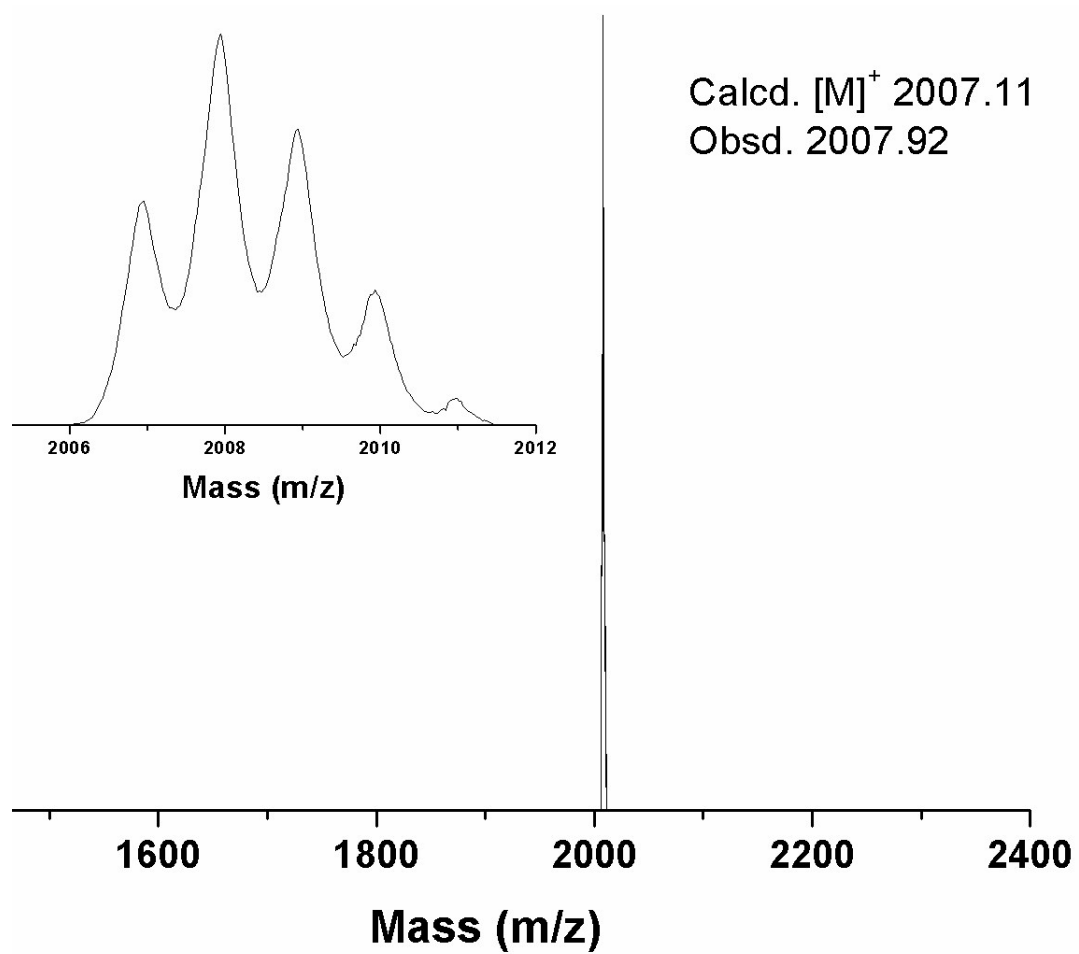


Figure S17. MALDI-TOF mass spectrum of 2.

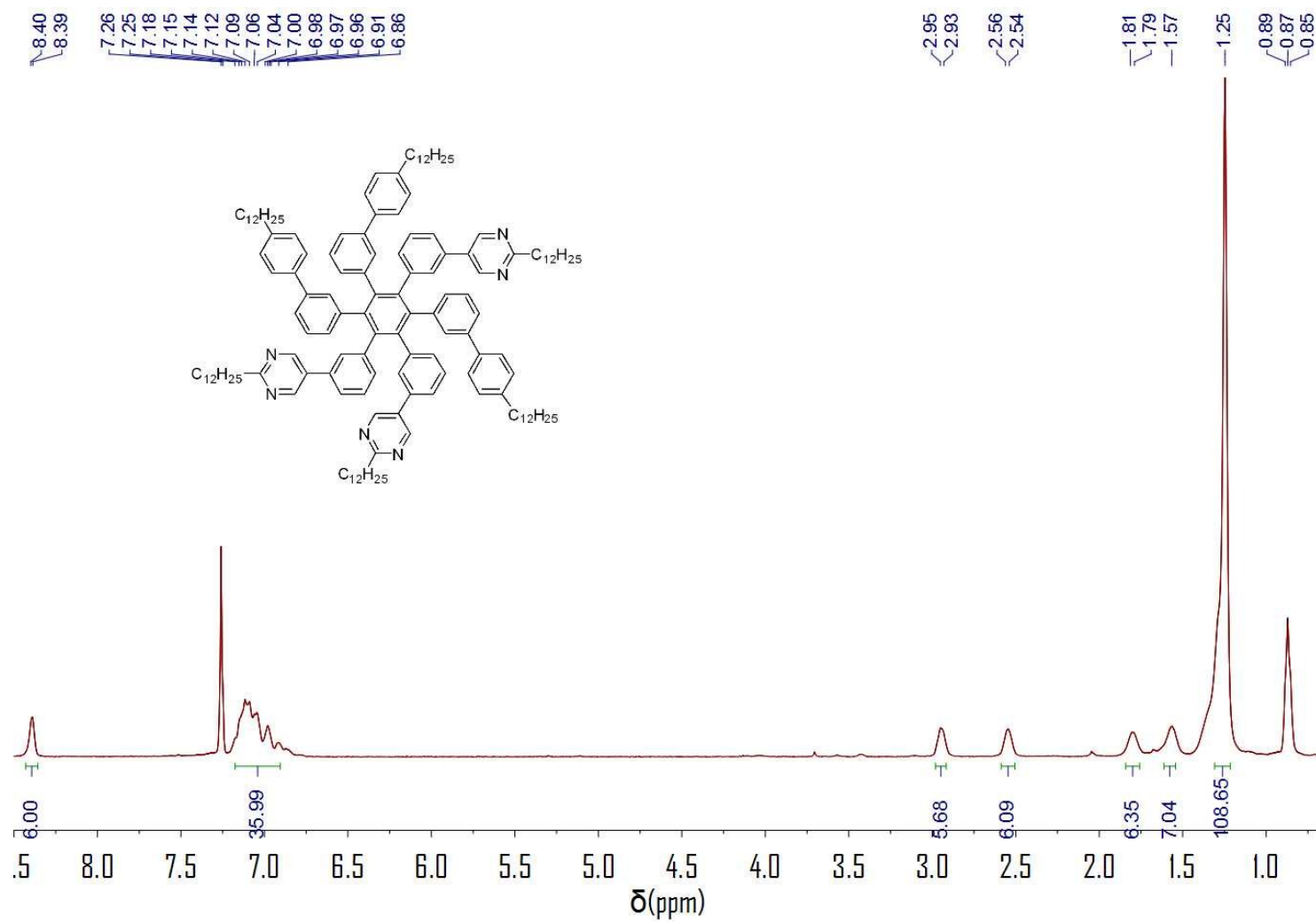


Figure S18. ^1H NMR spectra of **3** (400 MHz, CDCl_3).

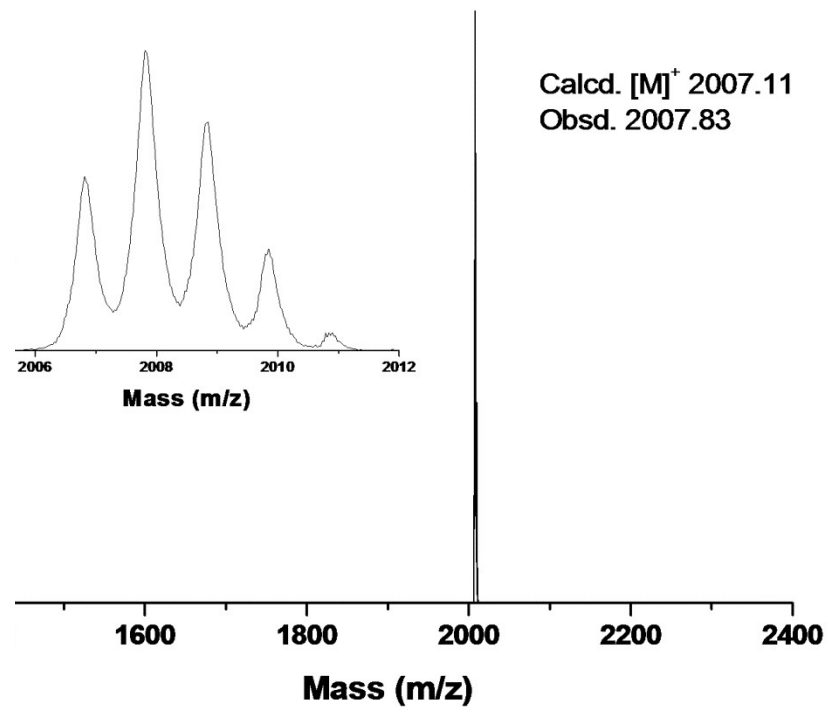


Figure S19. MALDI-TOF mass spectrum of **3**.



Figure S20. R_f value of **2** (middle), **3** (left), the mixture of **2** and **3** (right) in thin-layer chromatography (SiO_2 , PE:DCM:EA = 10:10:1).