

**Supplementary Material**

**Copper selective self-sort polymeric resin with mixed-mode functionality for column preconcentration and atomic absorption spectrometric determination**

**Aminul Islam\*, Hilal Ahmad, Noushi Zaidi, Suneel Kumar**

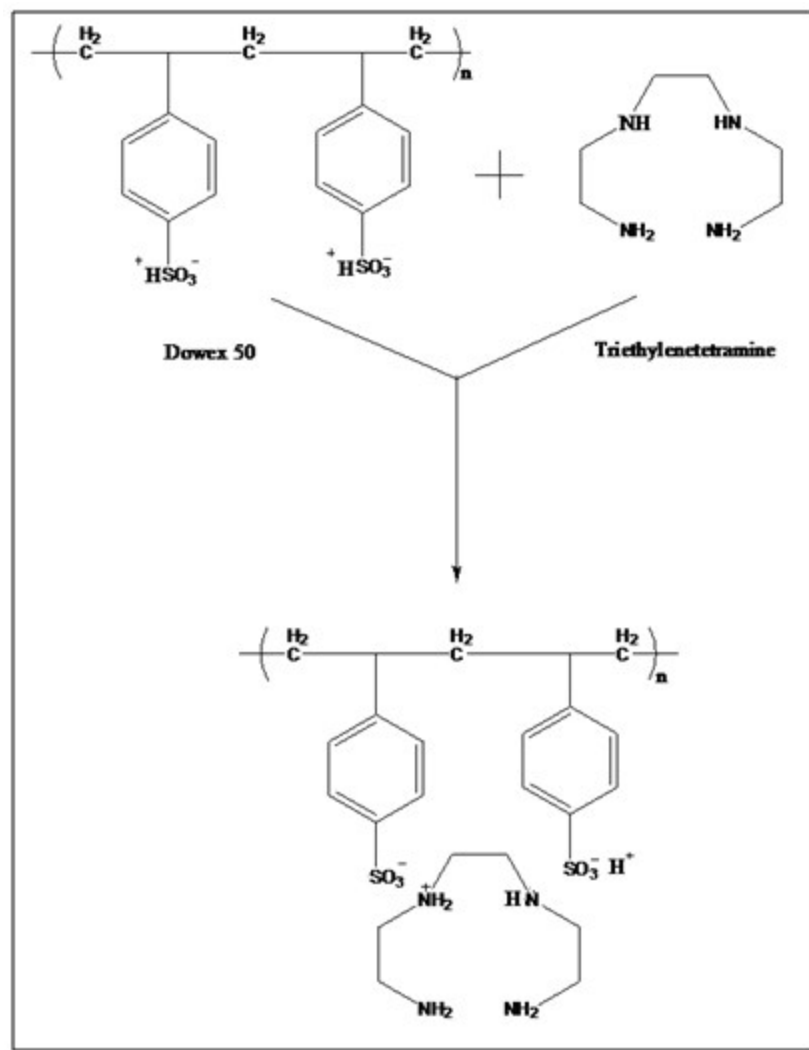
Analytical Research Laboratory, Department of Chemistry, Aligarh Muslim University, Aligarh,  
India-202 002

Journal: RSC Advances

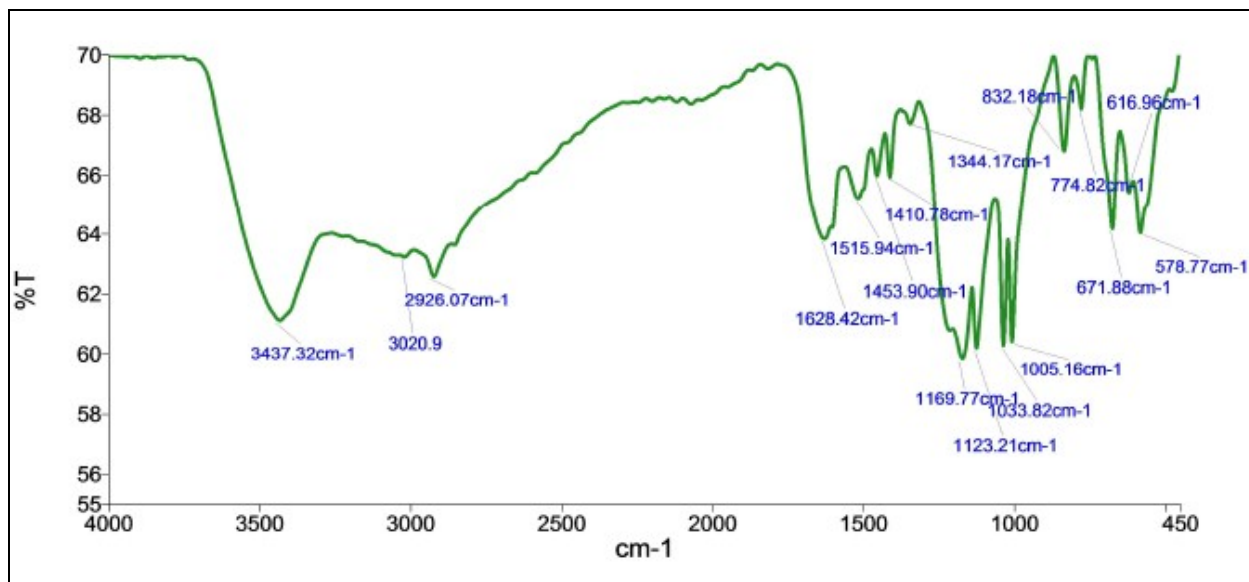
This Electronic Supplementary Information (ESI) file includes the supplementary figures and table.

---

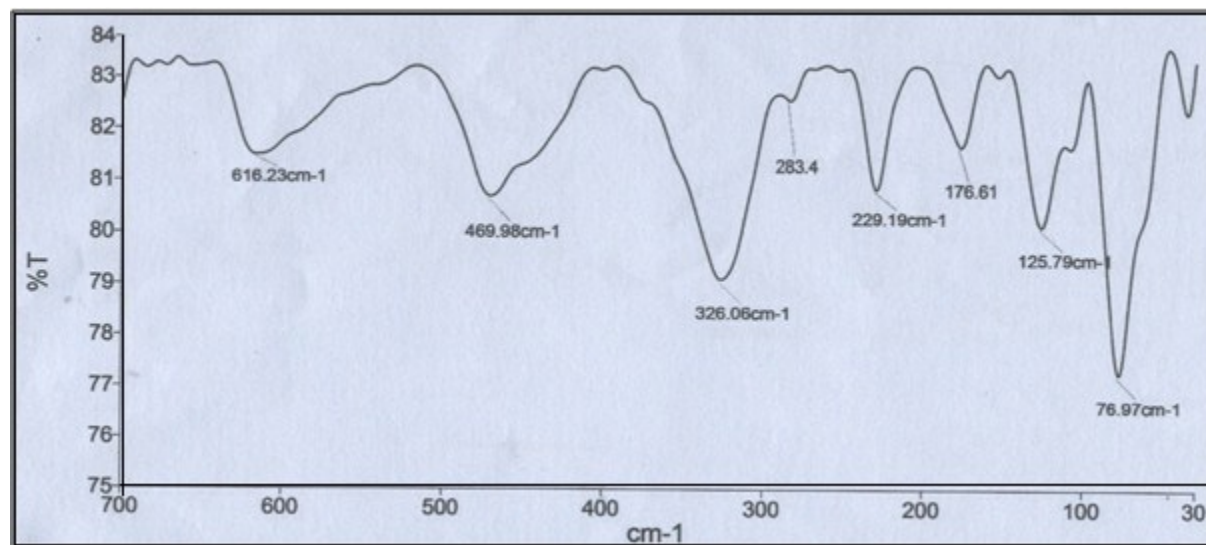
\*Corresponding author: Analytical Research Laboratory, Department of Chemistry, Aligarh Muslim University, Aligarh, India -202 002 Tel.: +91 9358979659; E-mail address: [aminulislam.ch@amu.ac.in](mailto:aminulislam.ch@amu.ac.in)



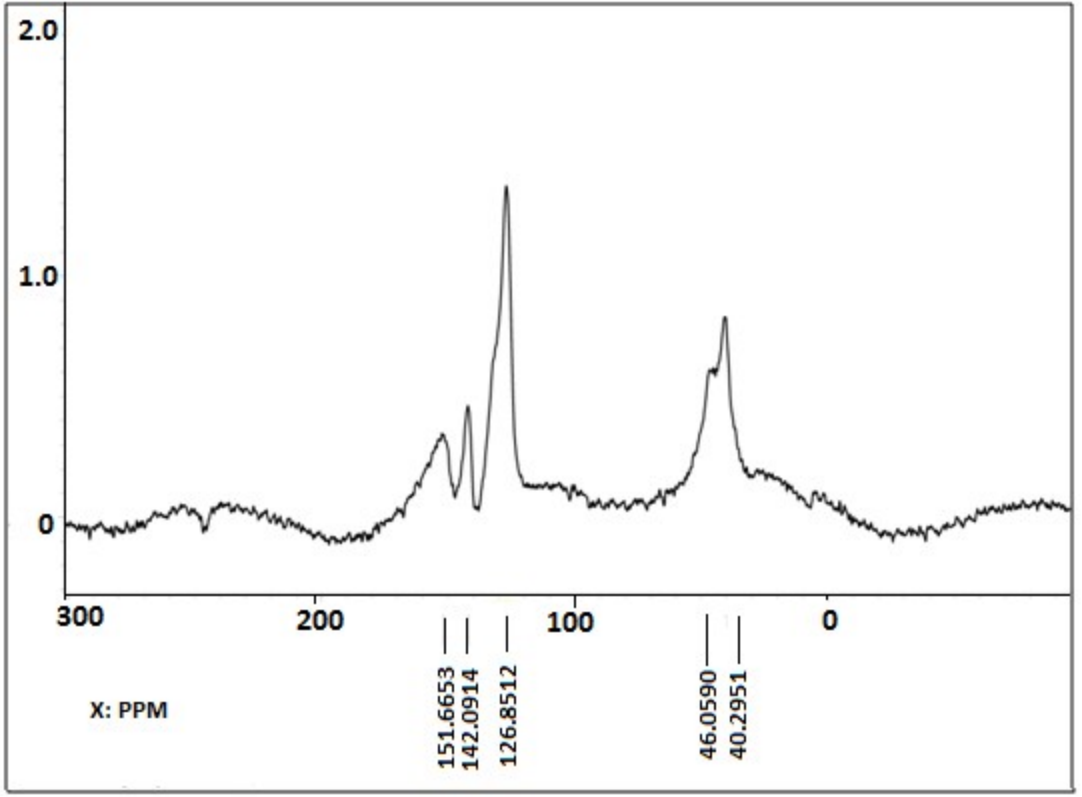
ESI Figure S1. Scheme for the preparation of Dow-trien chelating resin.



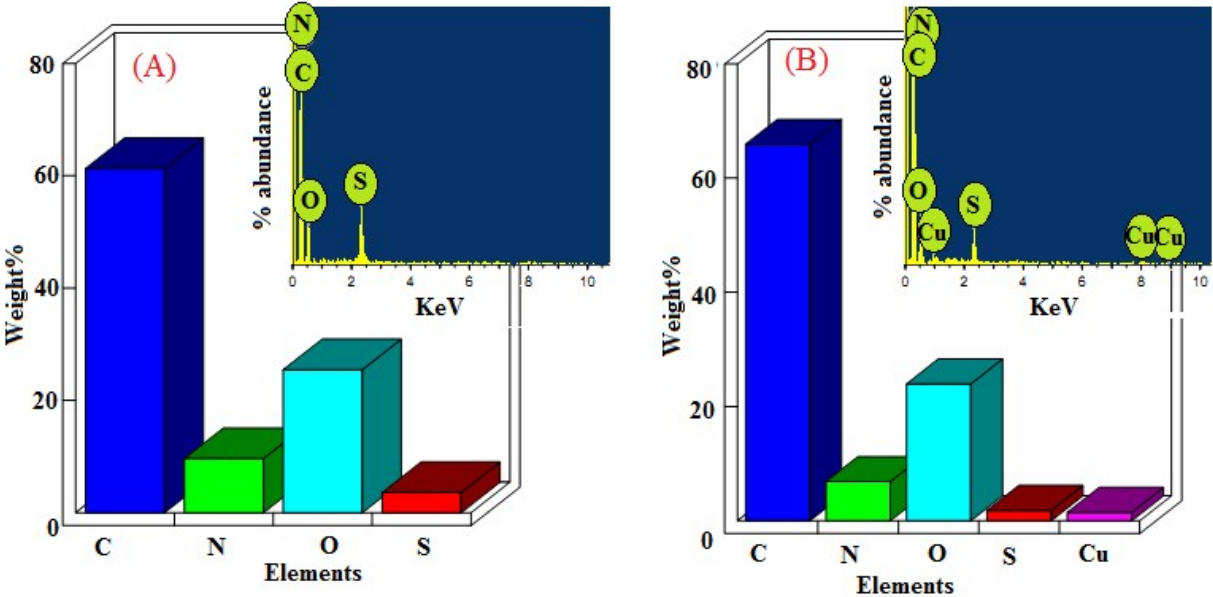
ESI Figure S2. FTIR spectra of Dow-trien resin.



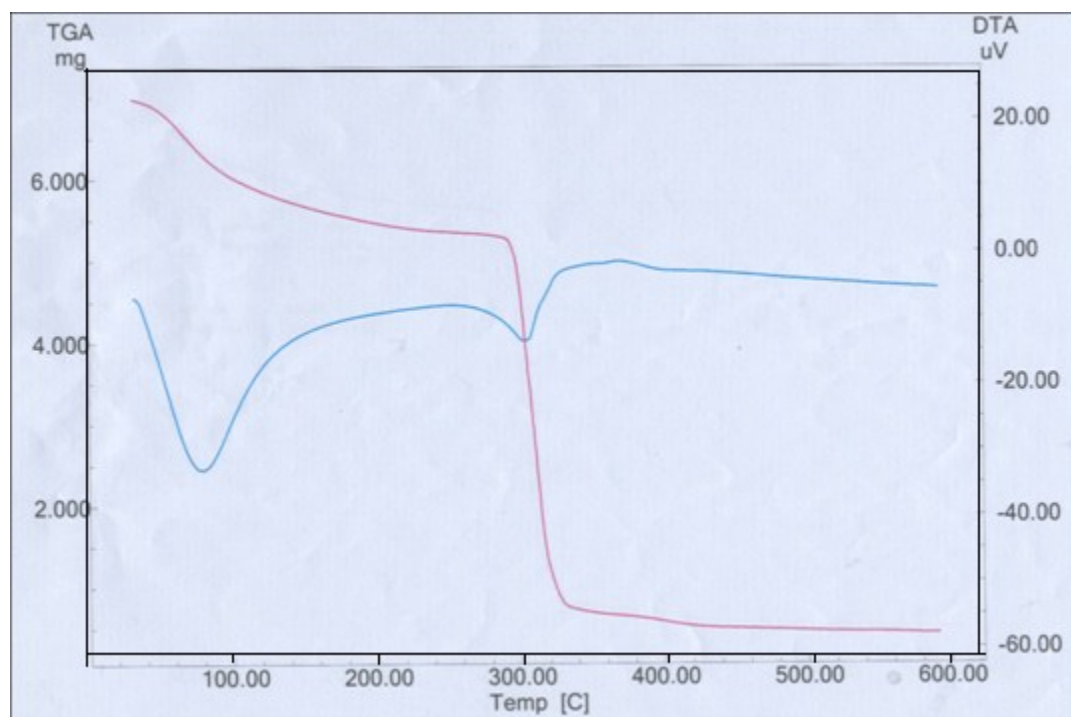
ESI Figure S3. Far IR spectra of the Cu(II) complexed Dow-trien.



ESI Figure S4.  $^{13}\text{C}\{^1\text{H}\}$  CP/MAS NMR spectra of Dow-trien resin.



ESI Figure S5A and S5B. EDS analysis of Dowex and Dow-trien resins.



**ESI Figure S6.** TGA/DTA spectra depicts the thermal stability of Dow-trien.

**ESI Table S1**

Elemental analysis data of Dowex and Dow-trien resins.

Resin	Element content (%)					
	C	H	N	S	O	$L_0^a$
Dowex	39.45	4.65	0.01	2.93	42.9	-
Dow-trien	42.69	5.21	2.43	2.96	33.7	1.73

<sup>a</sup> Functionalization degree ( $L_0$ = millimoles of ligand per gram of resin).