

One pot synthesis of acridine analogues from 1,2-diols as key reagents.

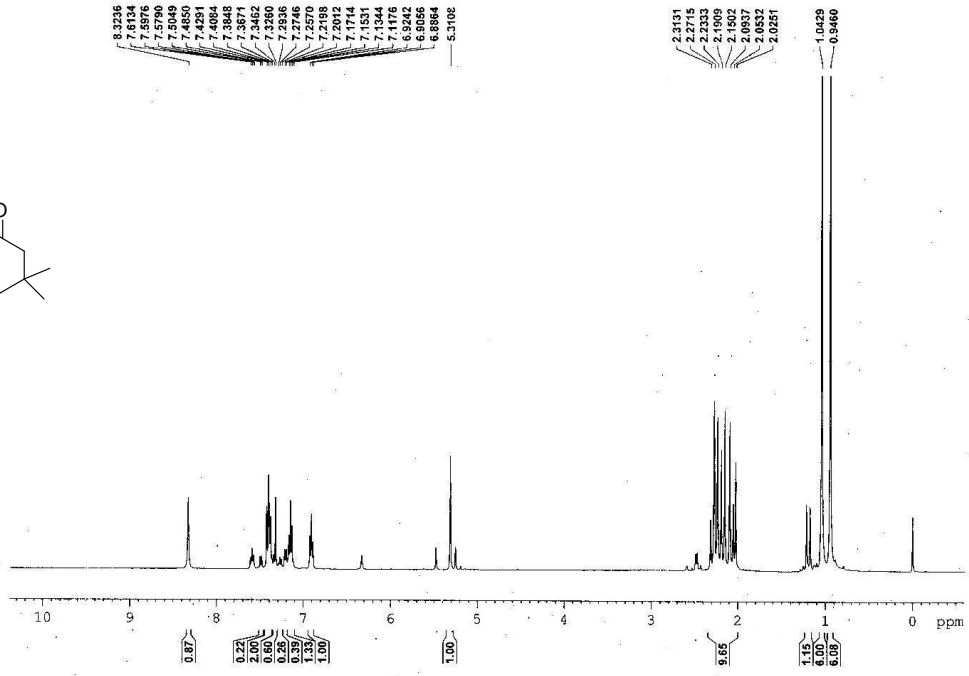
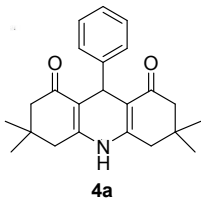
Narasashetty Jagadishbabu and Kalegowda Shivashankar*

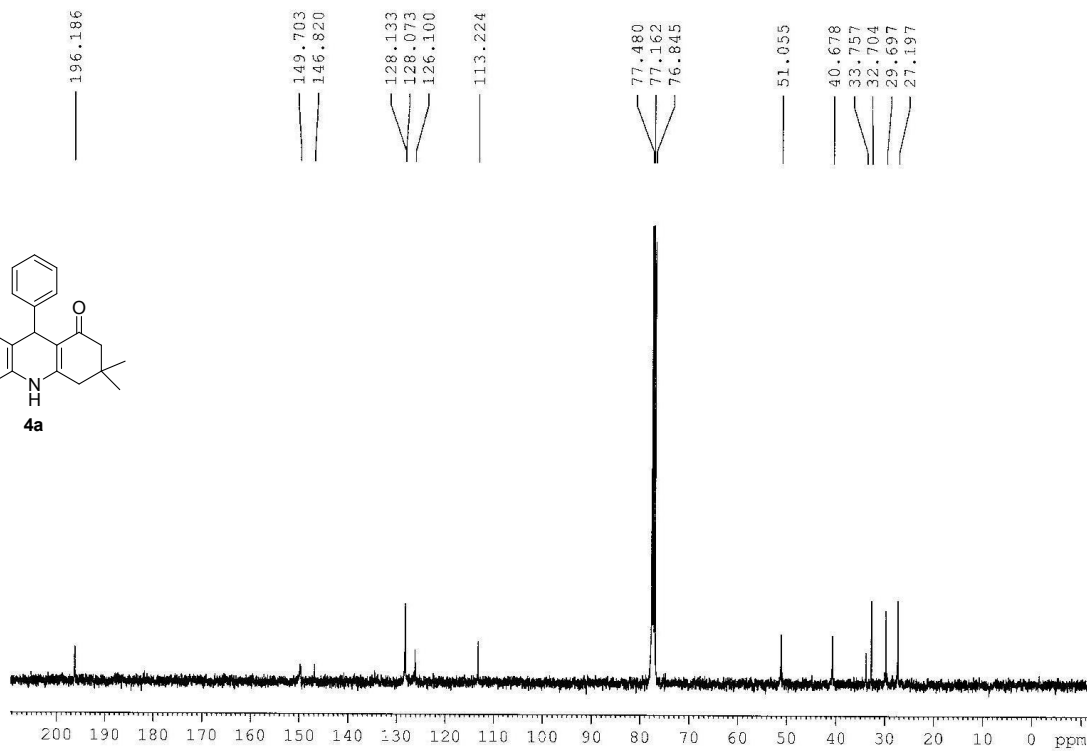
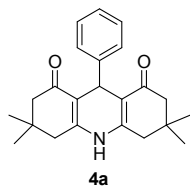
P.G. Department of Chemistry, Central College Campus, Bangalore University, Bangalore - 560 001, Karnataka, India.

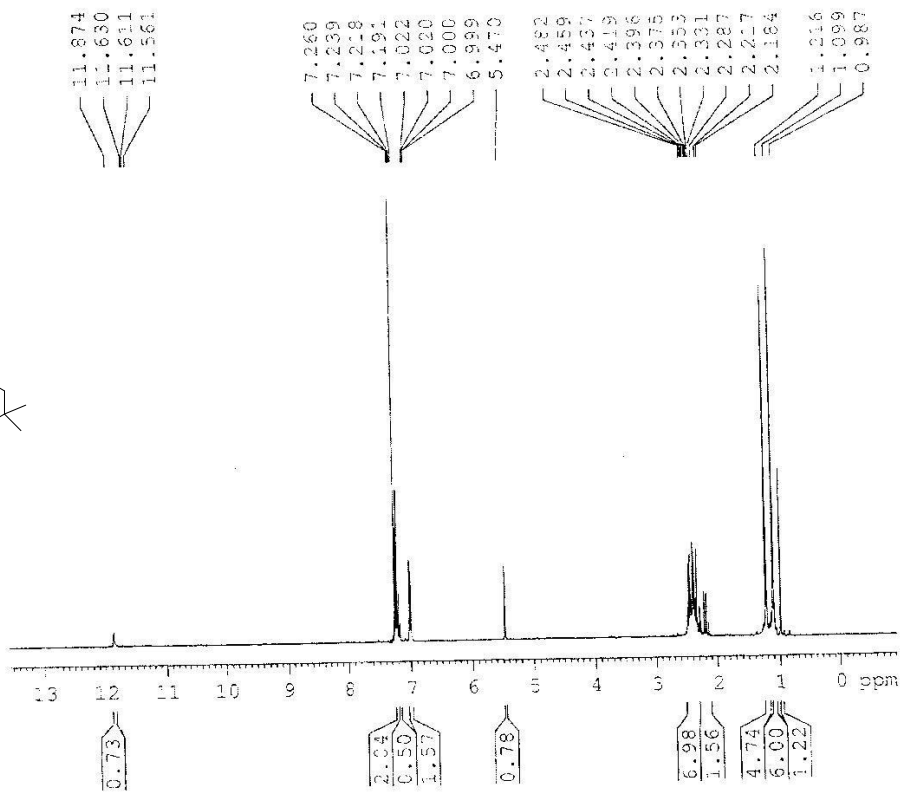
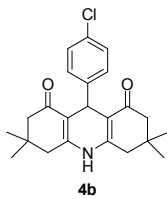
*Corresponding author. Tel: +91-80-22961249, *E-mail addresses:*

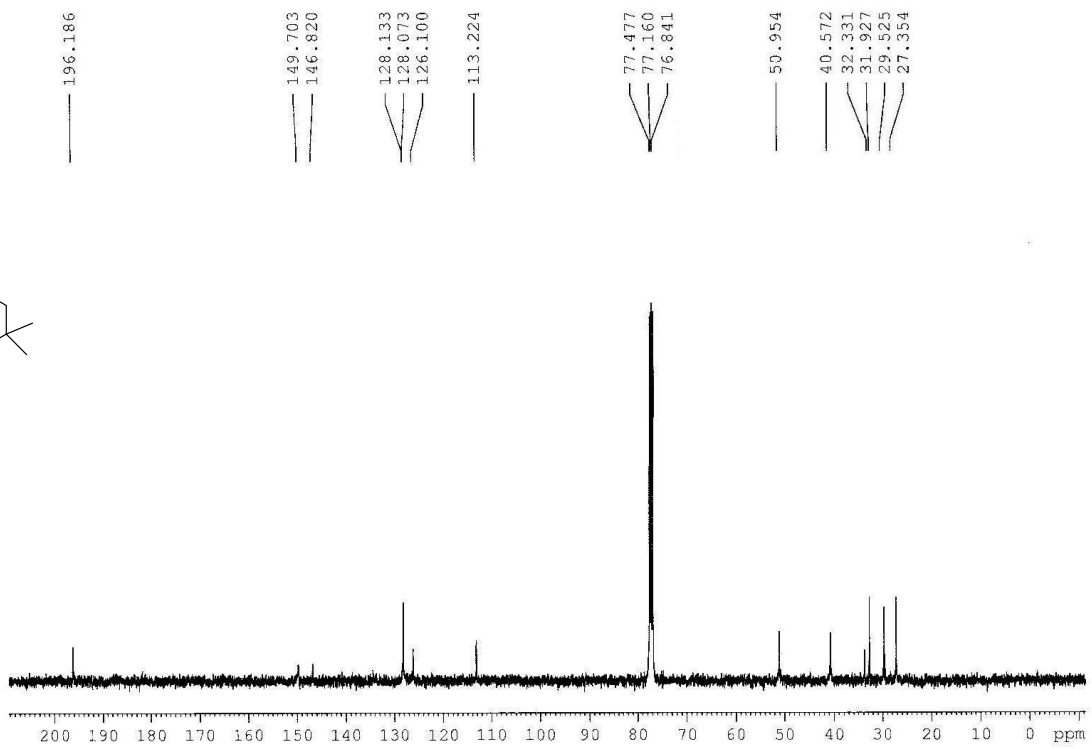
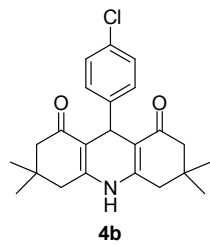
shivashankark@gmail.com (K. Shivashankar)

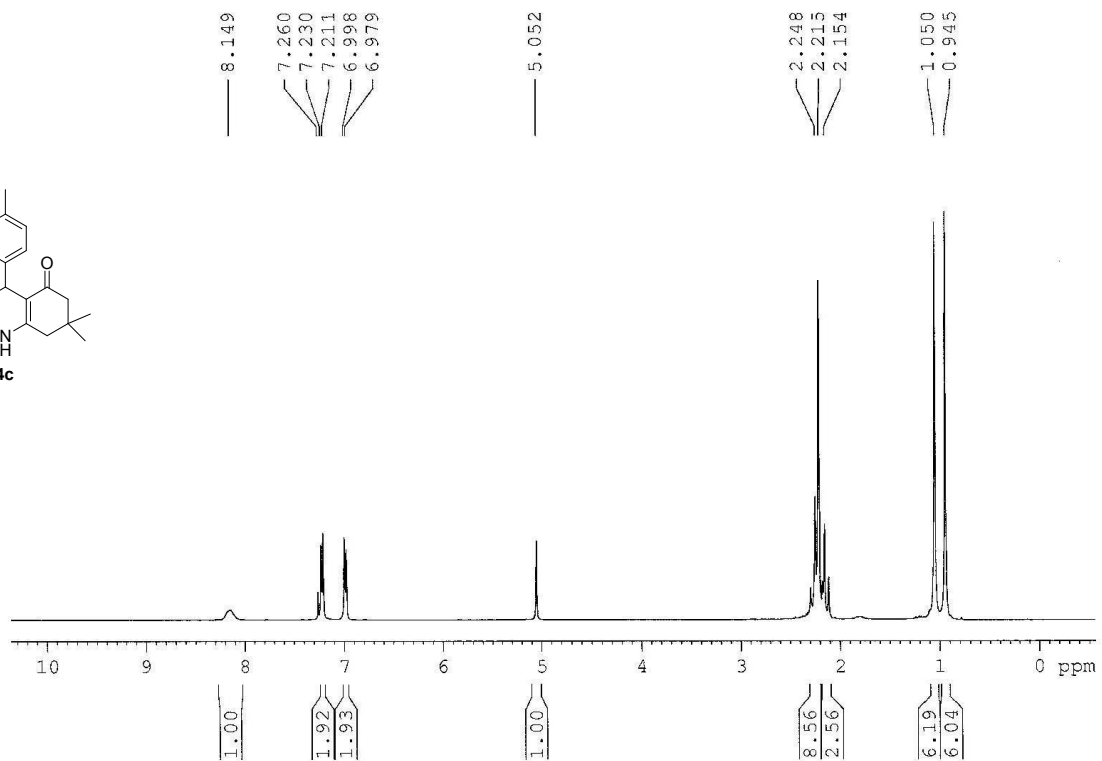
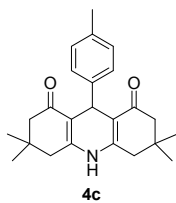
Entry	Compounds	Spectra
S2	4a	¹ H
S3	4a	¹³ C
S4	4b	¹ H
S5	4b	¹³ C
S6	4c	¹ H
S7	4c	¹³ C
S8	4d	¹ H
S9	4d	¹³ C
S10	4d	ESI mass spectrum
S11	4e	¹ H
S12	4e	¹³ C
S13	4f	¹ H
S14	4f	¹³ C
S15	4g	¹ H
S16	4g	¹³ C
S17	4h	¹ H
S18	4h	¹³ C
S19	4i	¹ H
S20	4i	¹³ C
S21	4j	¹ H
S22	4j	¹³ C
S23	4k	¹ H
S24	4k	¹³ C
S25	4l	¹ H
S26	4l	¹³ C
S27	4m	¹ H
S28	4m	¹³ C
S29	4n	¹ H
S30	4n	¹³ C
S31	4o	¹ H
S32	4o	¹³ C

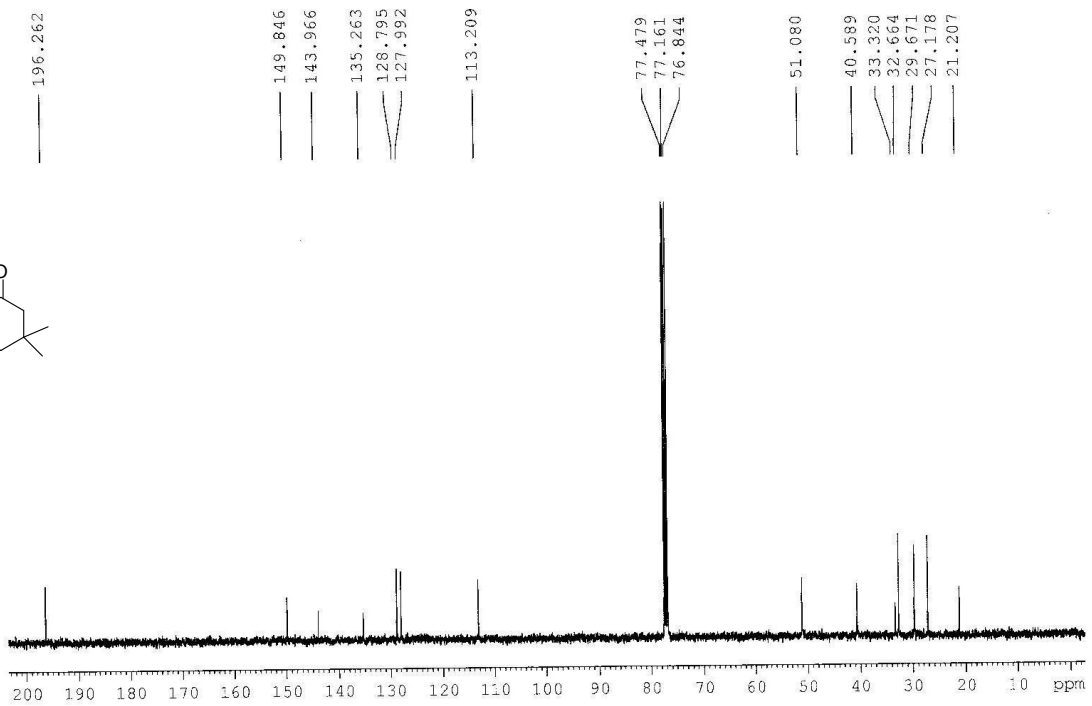
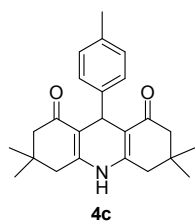


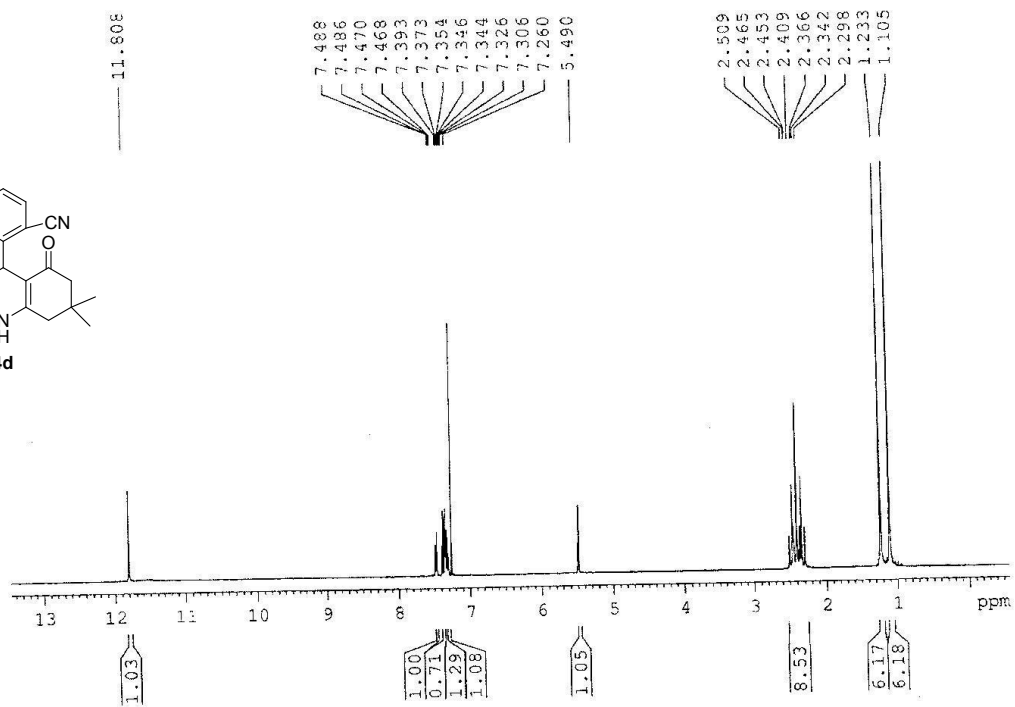
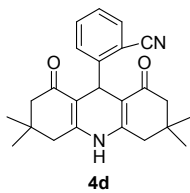


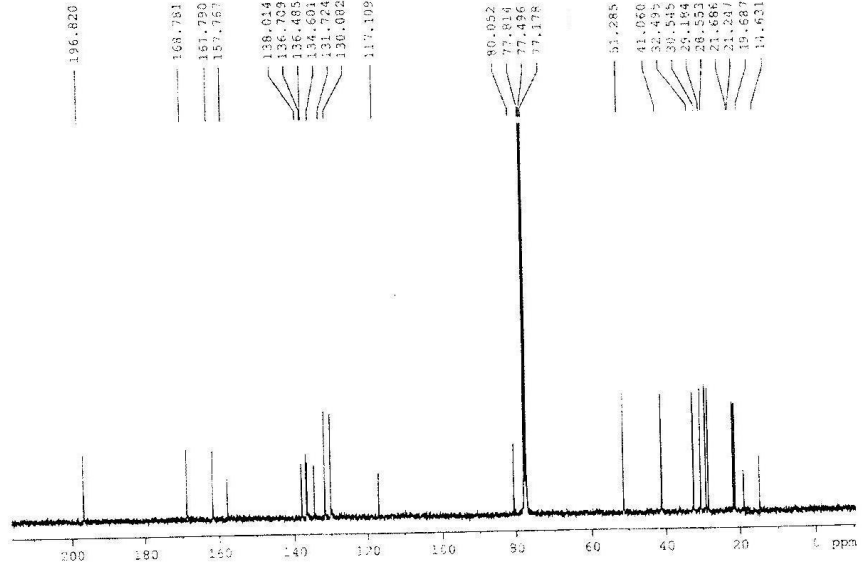
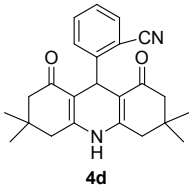






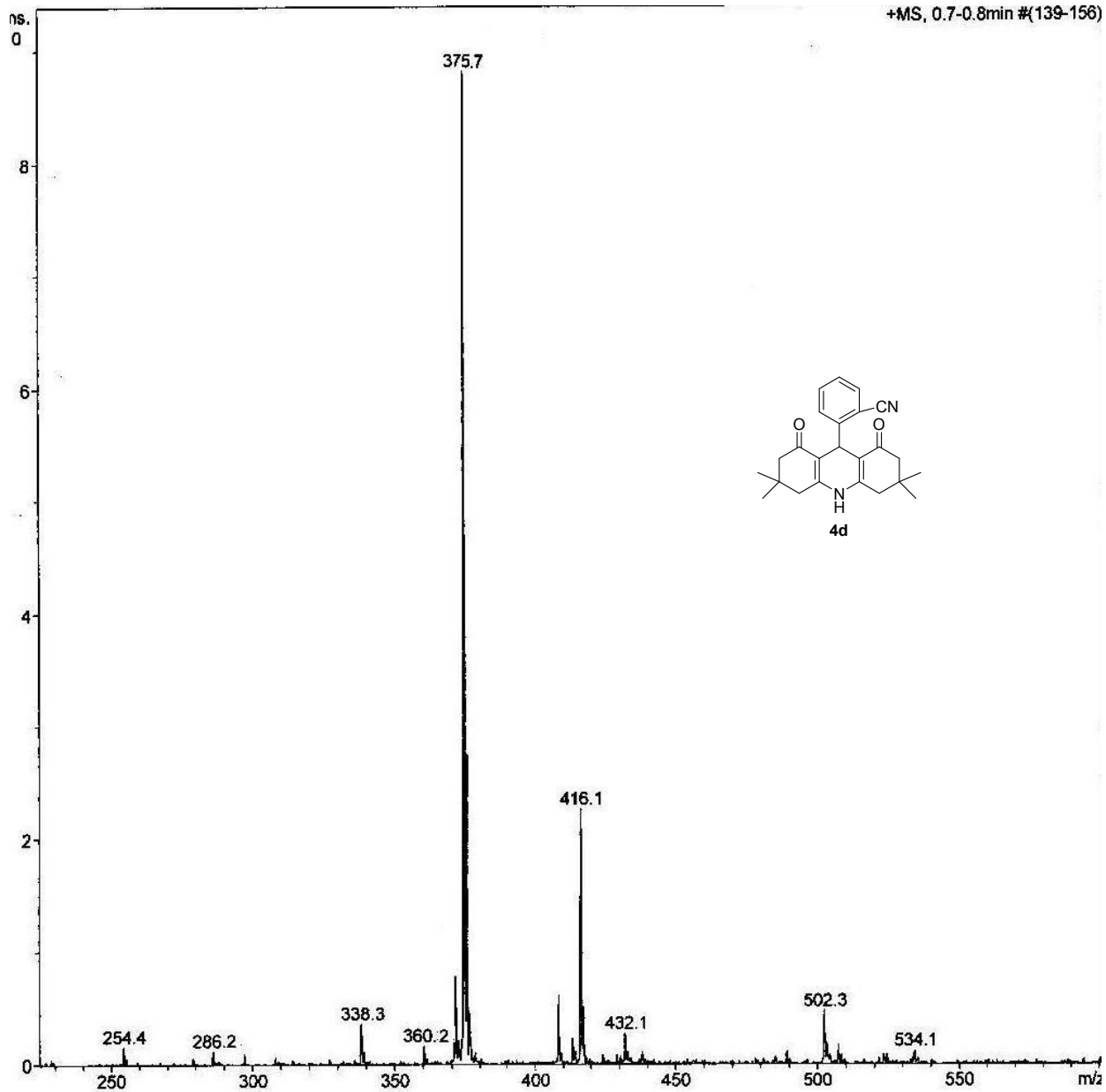


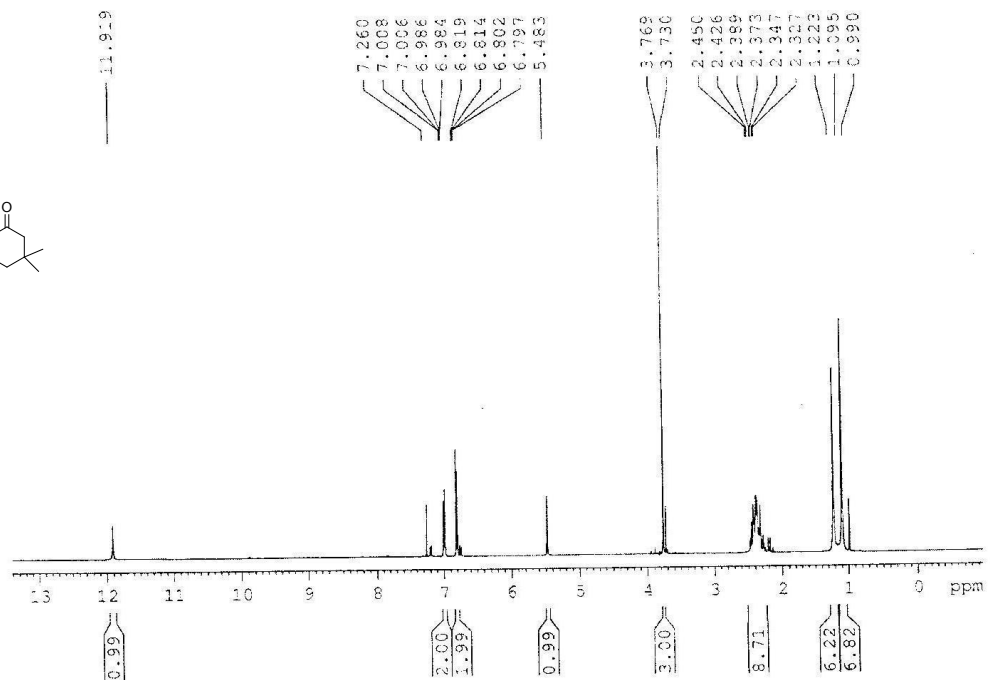
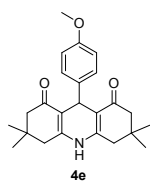


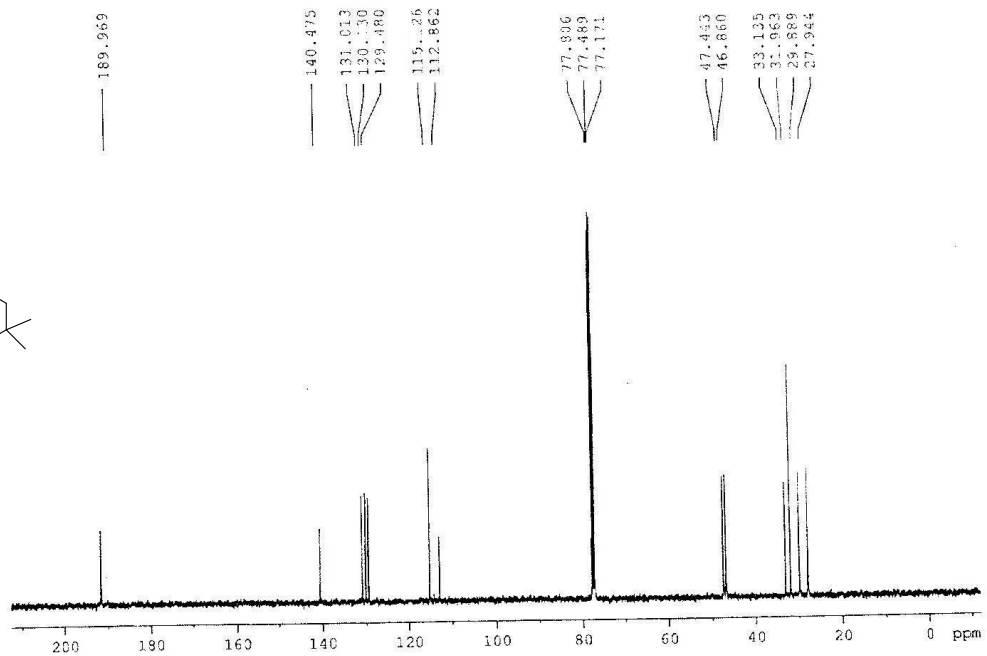
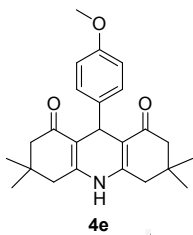


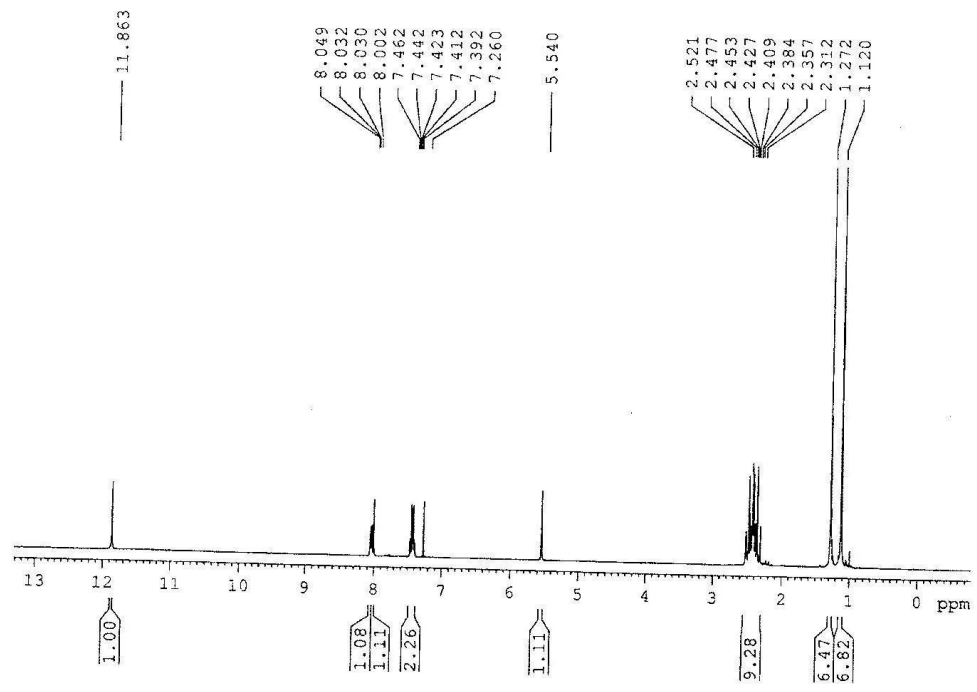
ESI-MS

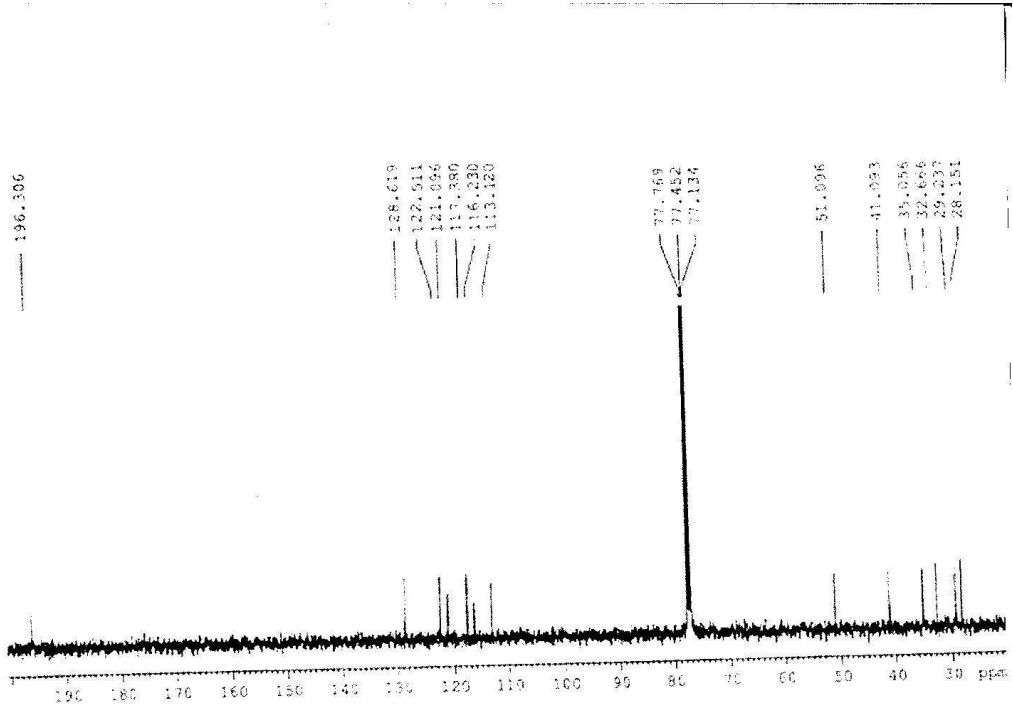
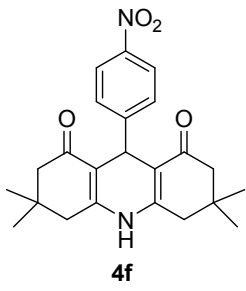
+MS, 0.7-0.8min #(139-156)

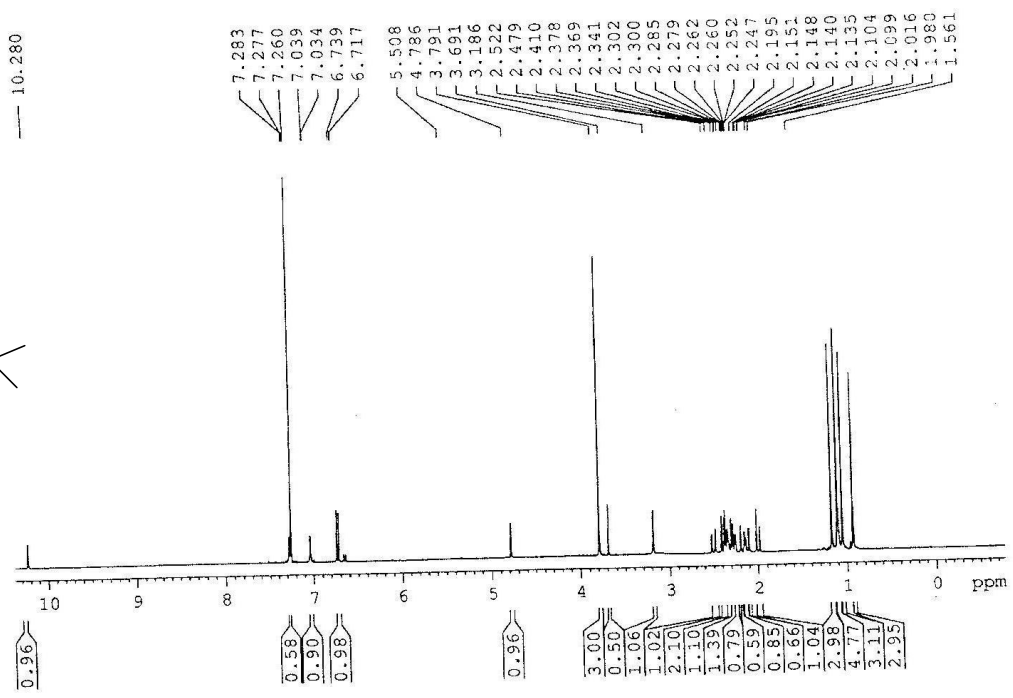
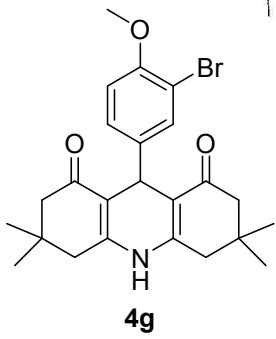


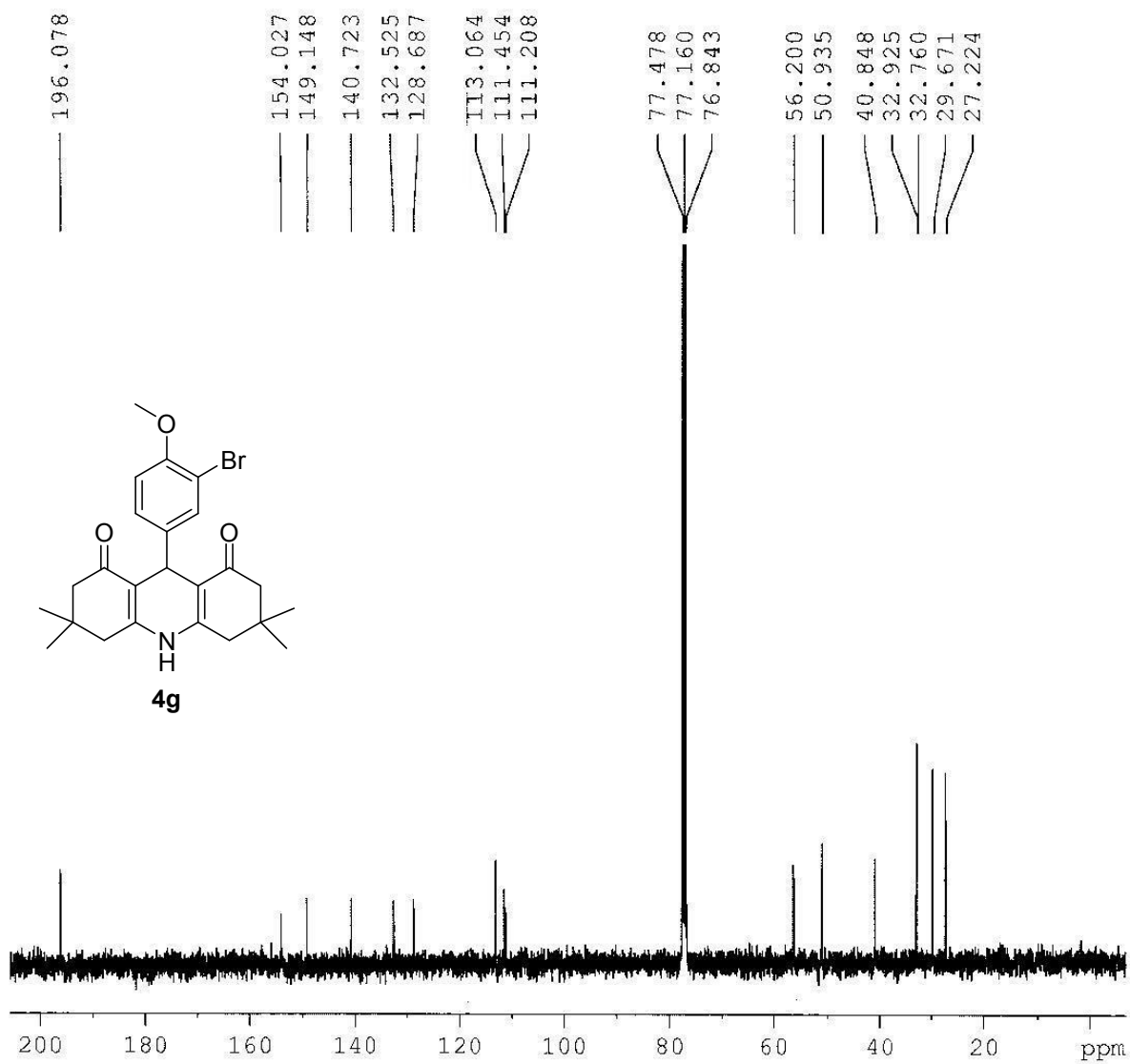


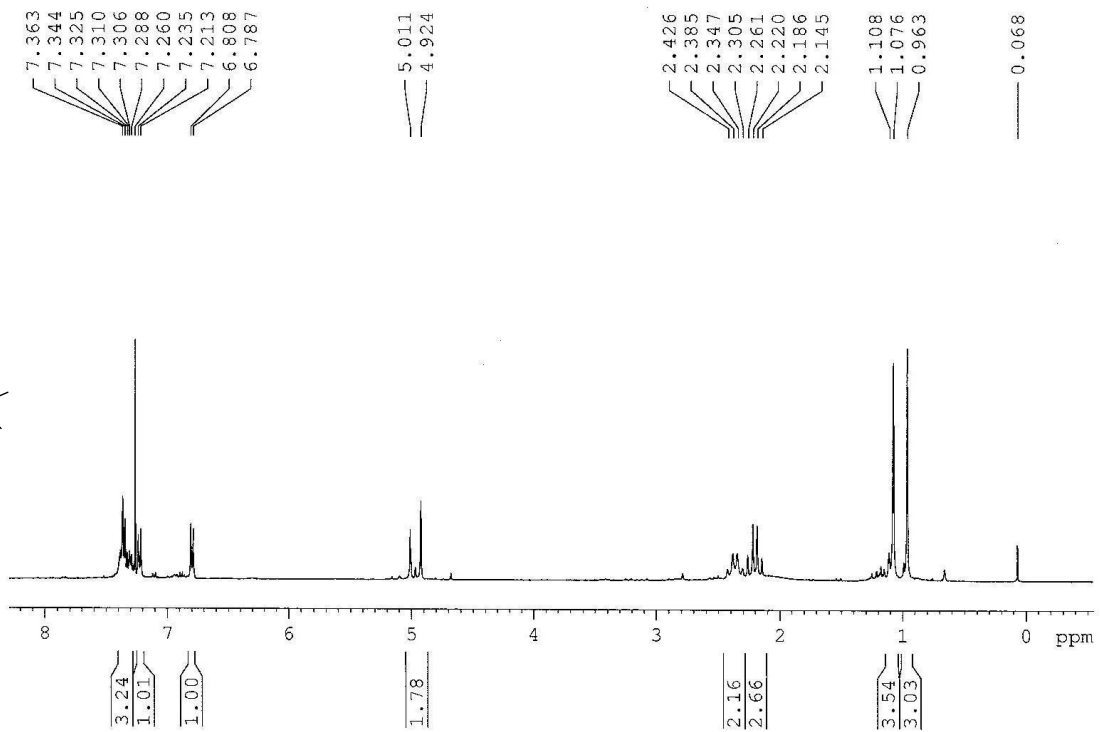
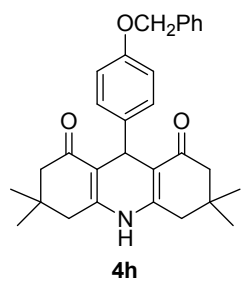


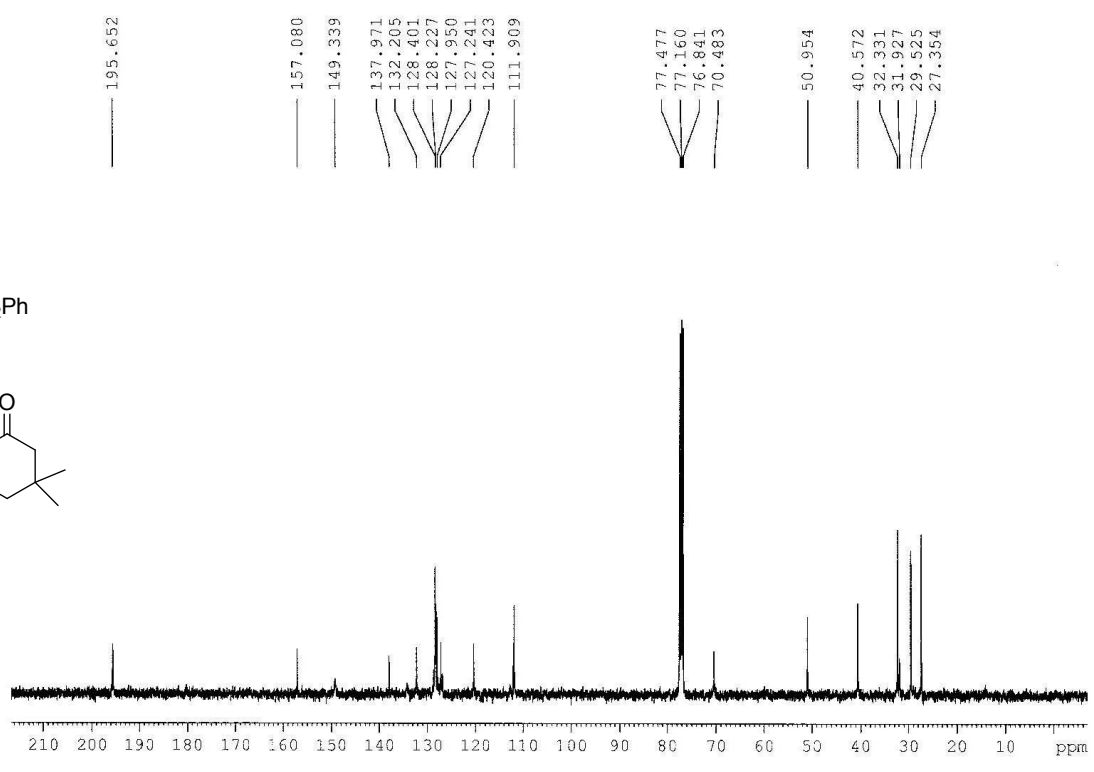
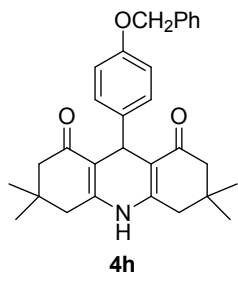


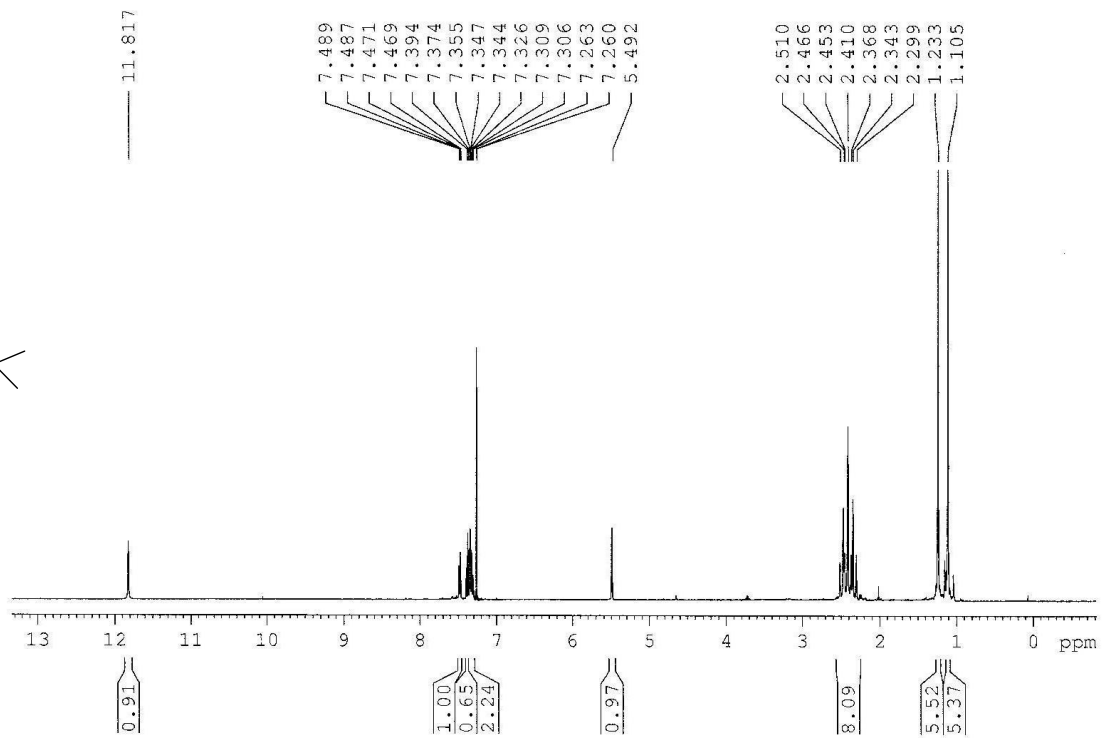
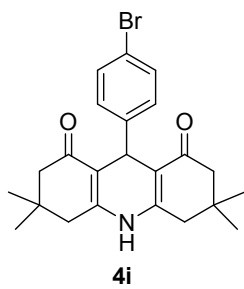


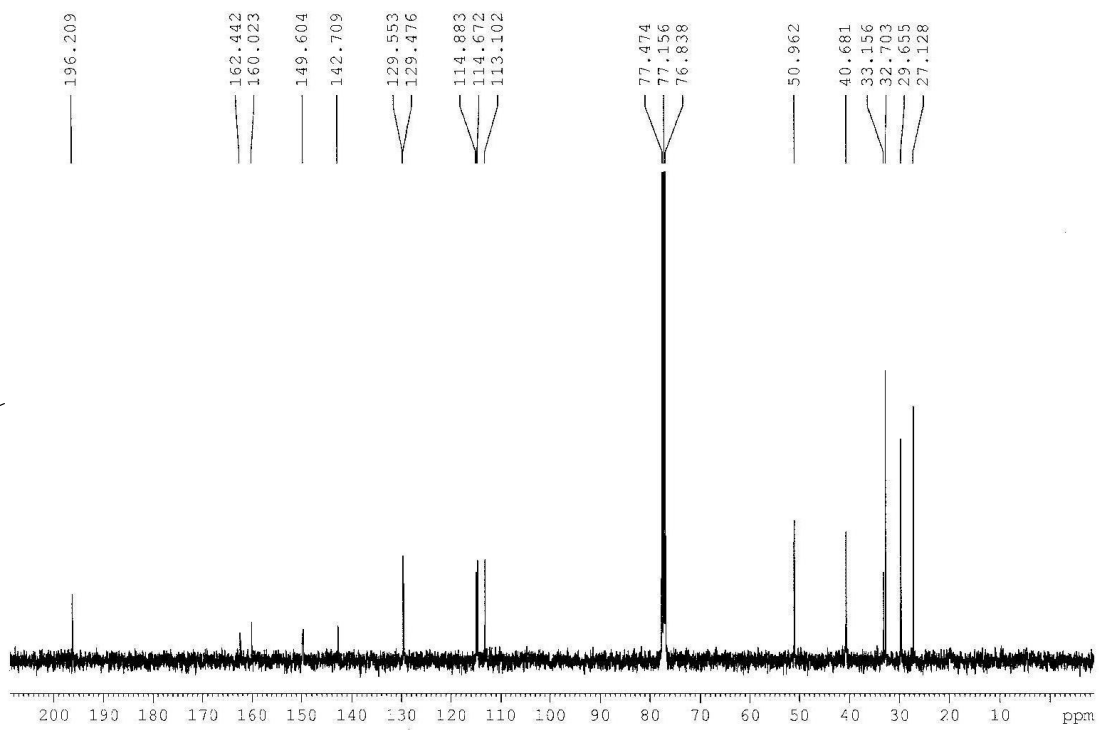
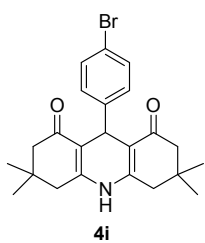


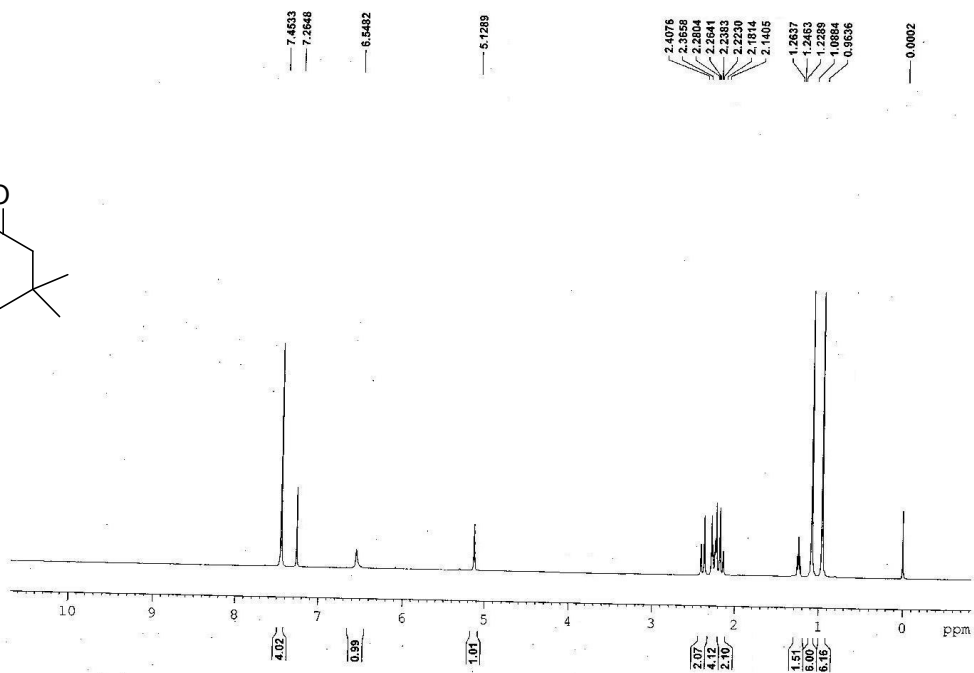
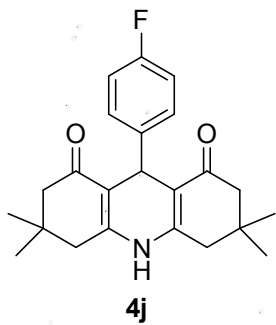


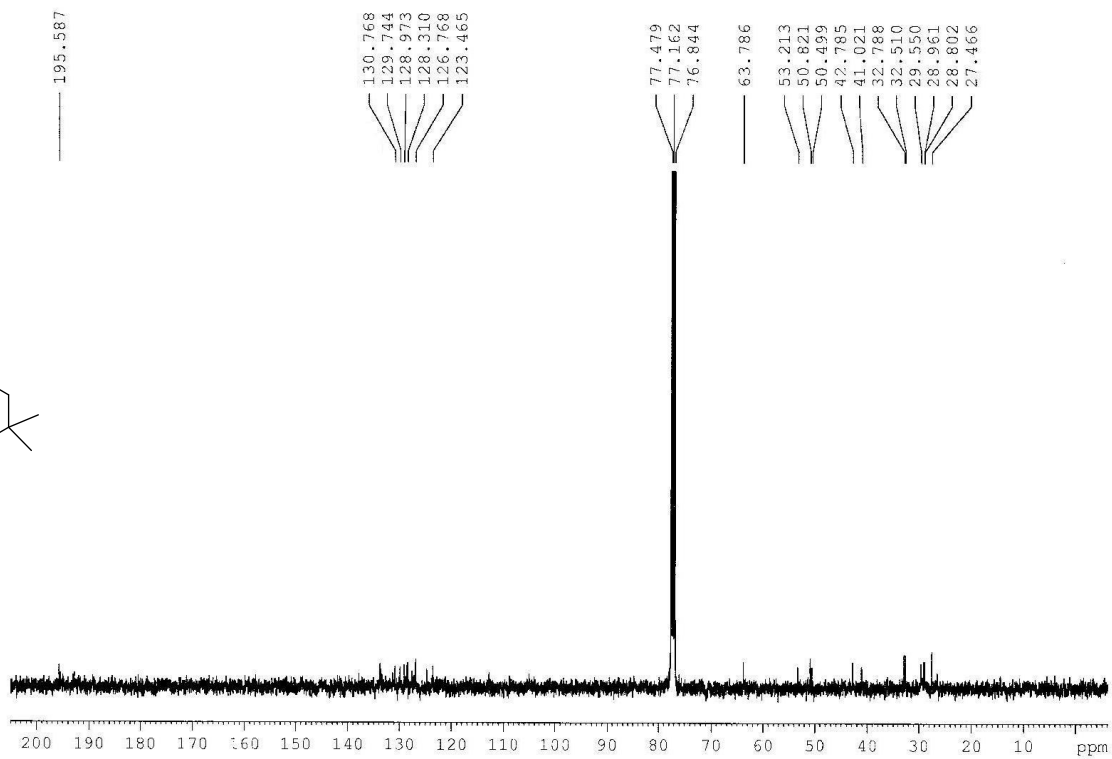
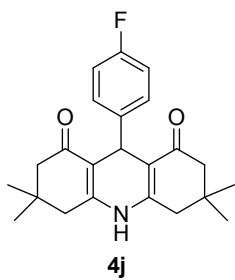


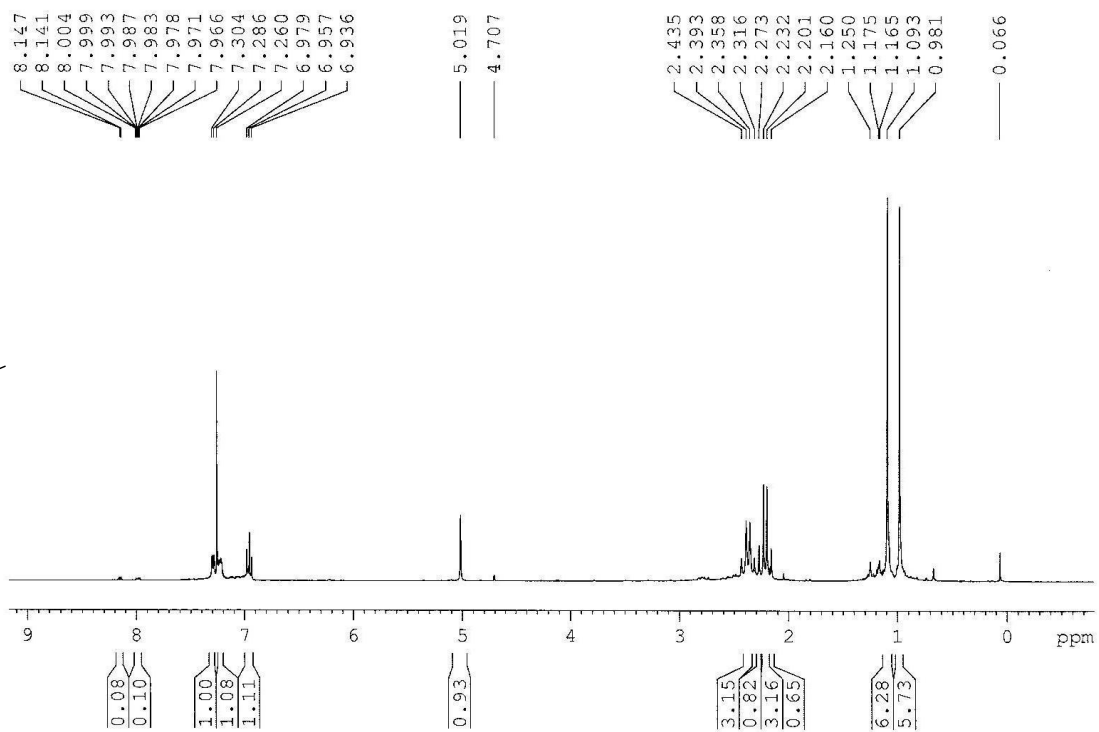
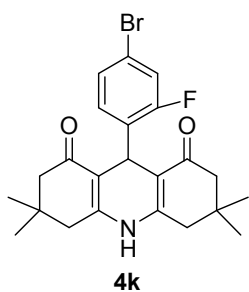


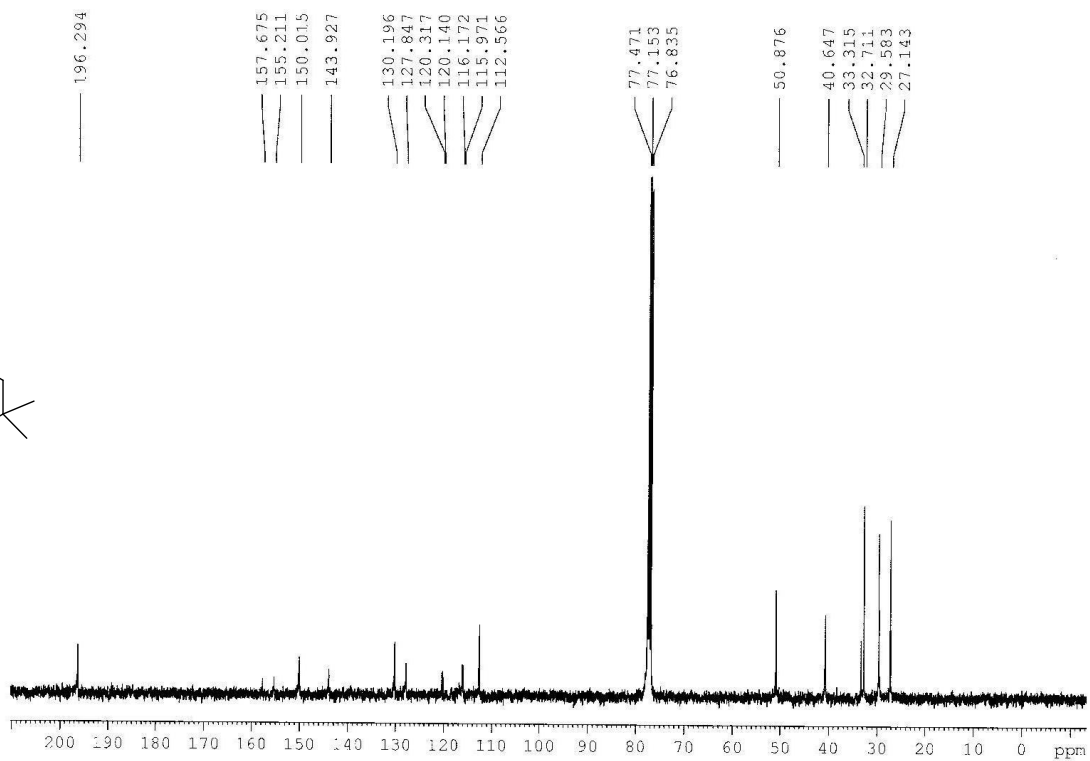
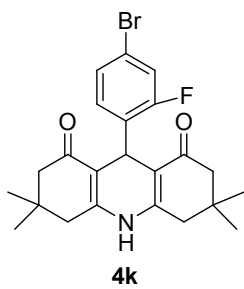


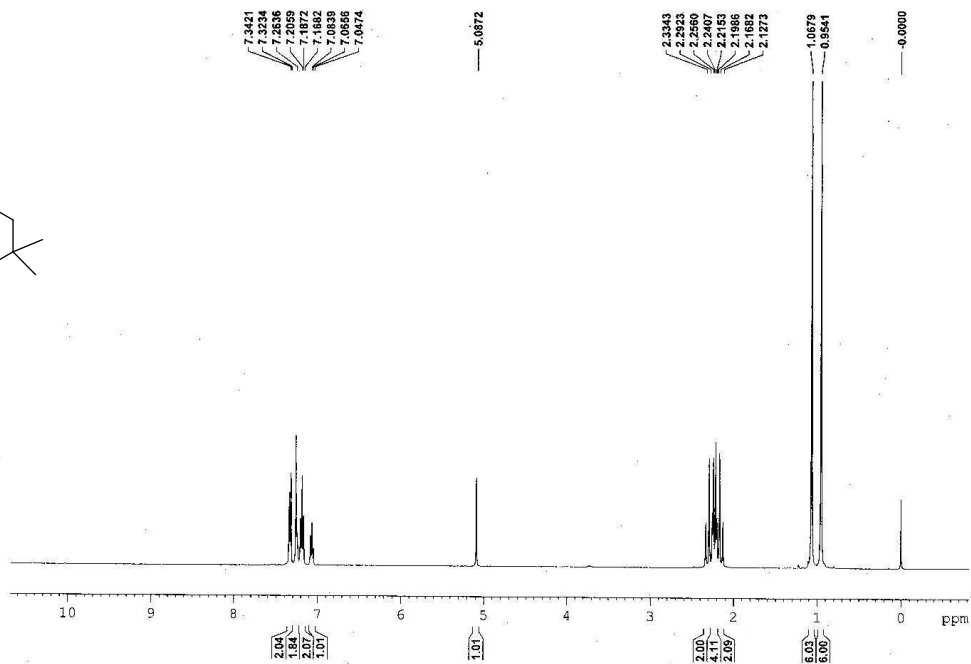
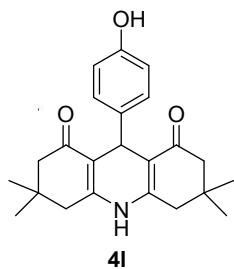


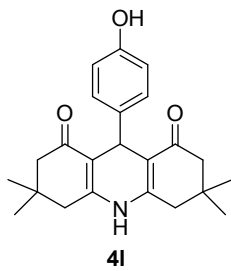












J-8

