

Supporting Information

Tunable Composite Architecture and Homogeneous Dispersion of Charged SiO₂ in Polymer Matrix Assisted by Poly(2-Ethylhexyl acrylate) (P2EHA) Latex Prepared by Self-Assembly through Electrostatic Interaction

Zheng Su^a, Hua Wang^{a, *}, Fei Xu^a, Konghu Tian^a, Jingwei Wu^b, Xingyou Tian^{a, **}

^a Technology and Engineering Research Center of Advanced Materials, Institute of Applied Technology, Hefei Institutes of Physical Science, C.A.S, No 2221, West Changjiang Road, Hefei, Anhui, P. R. China CN 230088.

^b Department of Chemical Engineering and Life Science, Wuhan University of Technology, 122 Luoshi Road, Wuhan, Hubei, P.R.China CN 430070.

* Corresponding author 1, Tel.: +86 130 33808 1113; E-mail: wanghua@issp.ac.cn.

** Corresponding author 2, Tel.: +86 551 65591418; E-mail: xytian@issp.ac.cn.

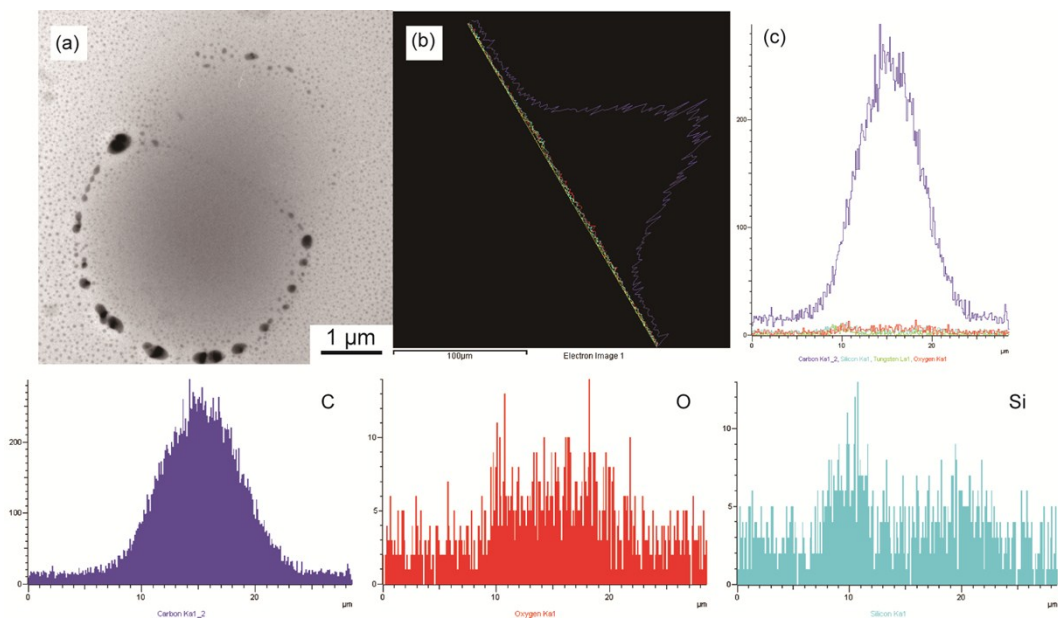


Figure S1. (a) TEM image, (b) TEM-EDX mapping direction and (c) TEM-EDX mapping spectra of composites.

Figure S1 (a) showed the TEM image of the adjacent composite particles. The TEM-EDX mapping direction showed in Figure S1 (b). The element characteristic peaks of C, O, Si were also presented in Figure S1 (c).

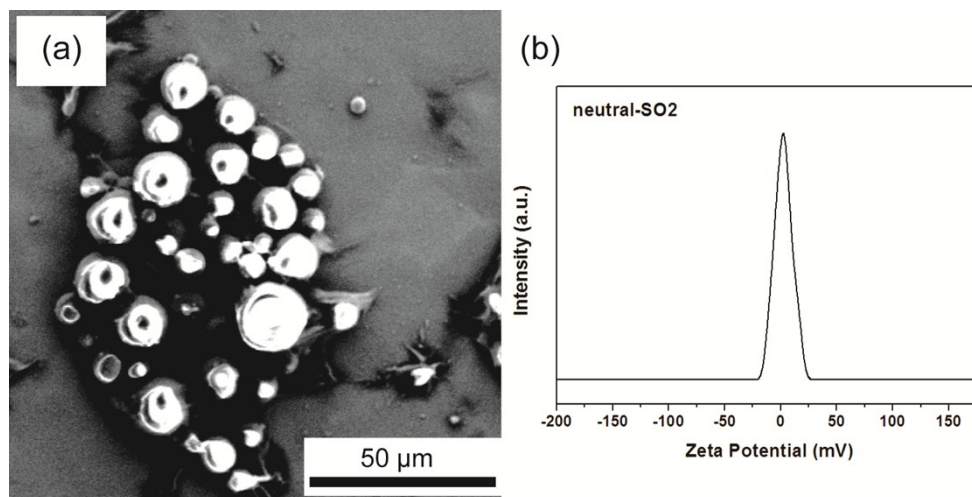


Figure S2. The (a) SEM image and zeta potential distribution of neutral SiO_2 .

Figure S2 (a) showed the SEM image of the neutral SiO_2 which had the similar particle size with p SiO_2 . Figure S2 (b) showed the zeta potential of the neutral SiO_2 which was around zero.