

Supplementary Information for

**Advances in Hydrogen Sulphide Utilization: Phase Transfer Catalysed
Selective Reduction of Nitronaphthalene**

Ujjal Mondal, Sujit Sen, Gaurav Singh*

Catalysis Research Laboratory, Department of Chemical Engineering, National Institute of
Technology, Rourkela – 769008, India

*Corresponding author: Tel: +91-9938246590; Fax: +91-661-2462022; Email: sensujit@nitrkl.ac.in

Figure S1: GC spectra showing formation of 1-naphthylamine from reactant 1-Nitronaphthalene in
solvent toluene. S3

Figure S2: Mass spectra for all the peaks shown in Figure S3 S4

Figure S3: Mass spectra of product 1-naphthylamine S5

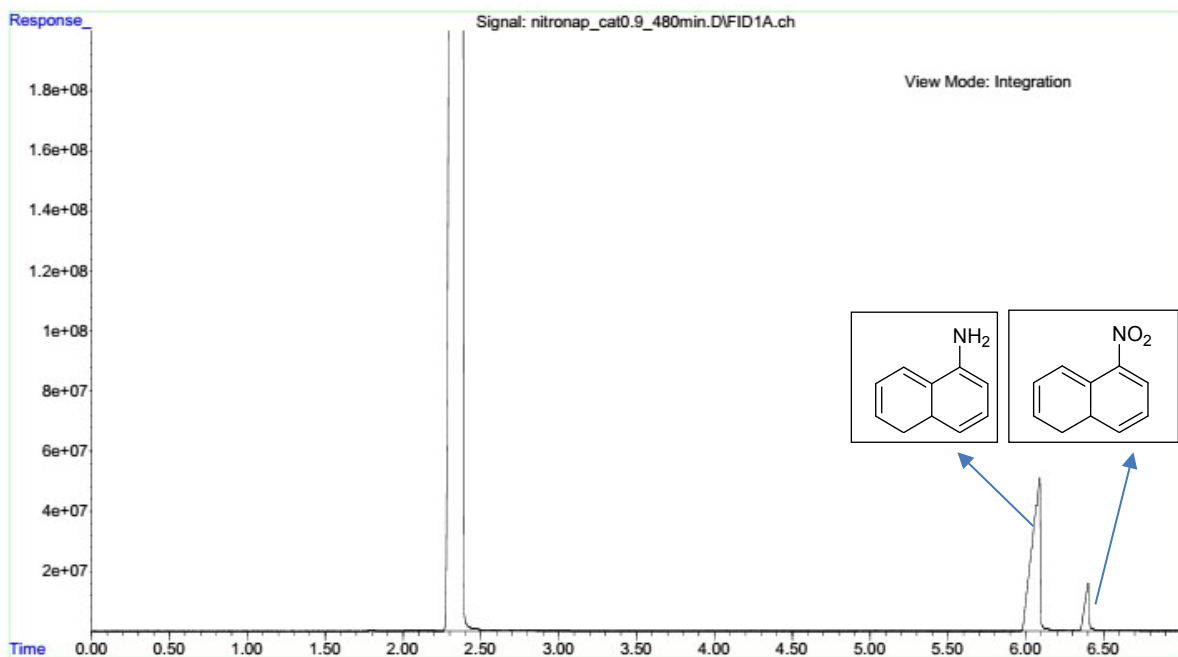


Figure S1: GC Spectra showing formation of 1-naphthylamine from reactant 1-Nitronaphthalene in solvent toluene.

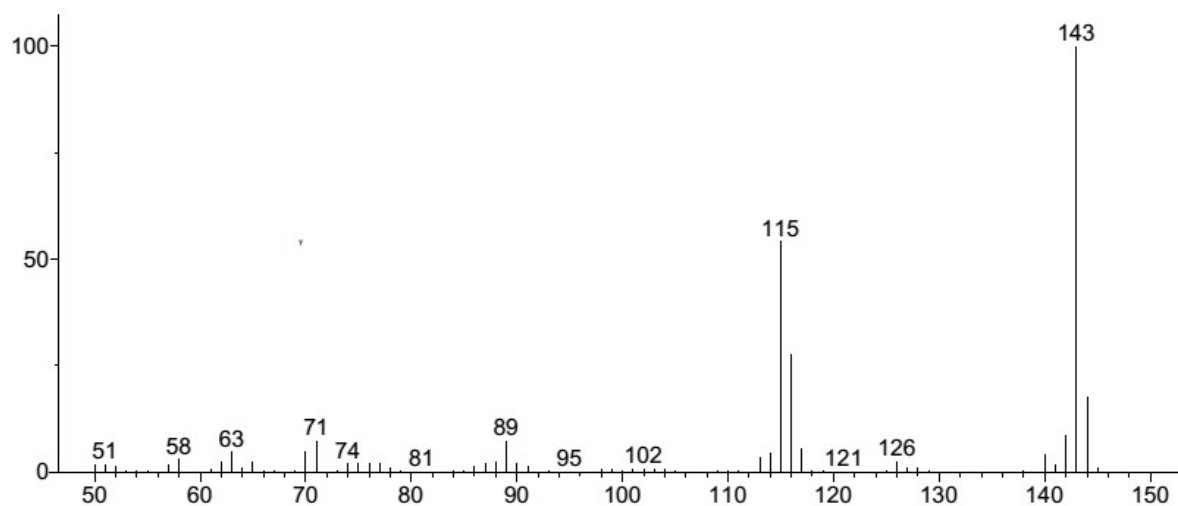


Figure S2: Mass spectra for all the peaks shown in Figure S3

Hit 1 : 1-Naphthalenamine
C₁₀H₉N; MF: 962; RMF: 964; Prob 59.3%; CAS: 134-32-7; Lib: replib; ID: 21017.

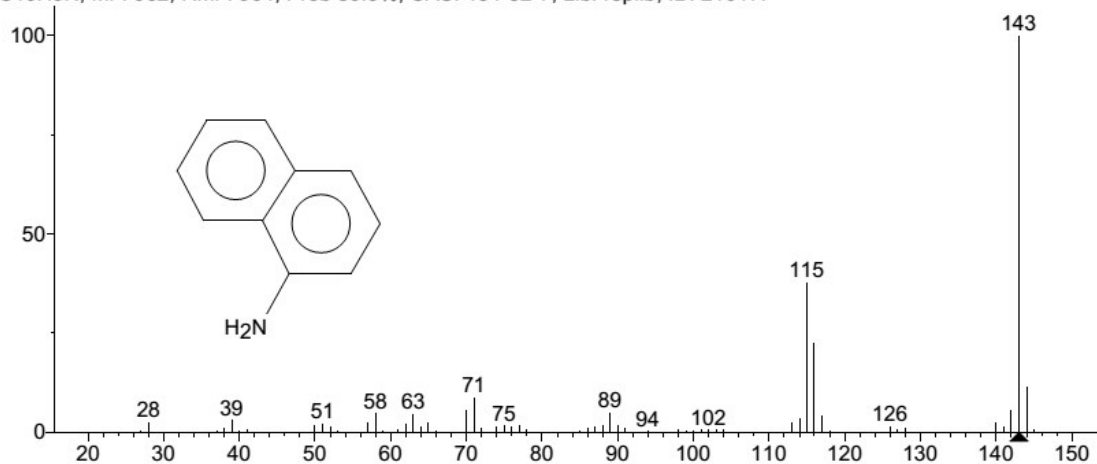


Figure S3: Mass spectra of product 1-naphthylamine