

Supplementary Information

**Enhanced amplified spontaneous emission from morphology-controlled organic-inorganic halide
perovskite films**

**Liang Qin,^a Longfeng Lv,^a Yu Ning,^a Chunhai Li,^a Qipeng Lu,^a Lijie Zhu,^a Yufeng Hu,^a Zhidong
Lou,^a Feng Teng^a and Yanbing Hou^{*a}**

Key laboratory of Luminescence and Optical Information, Ministry of Education, Beijing JiaoTong University, Beijing 100044,

China. E-mail: ybhou@bjtu.edu.cn

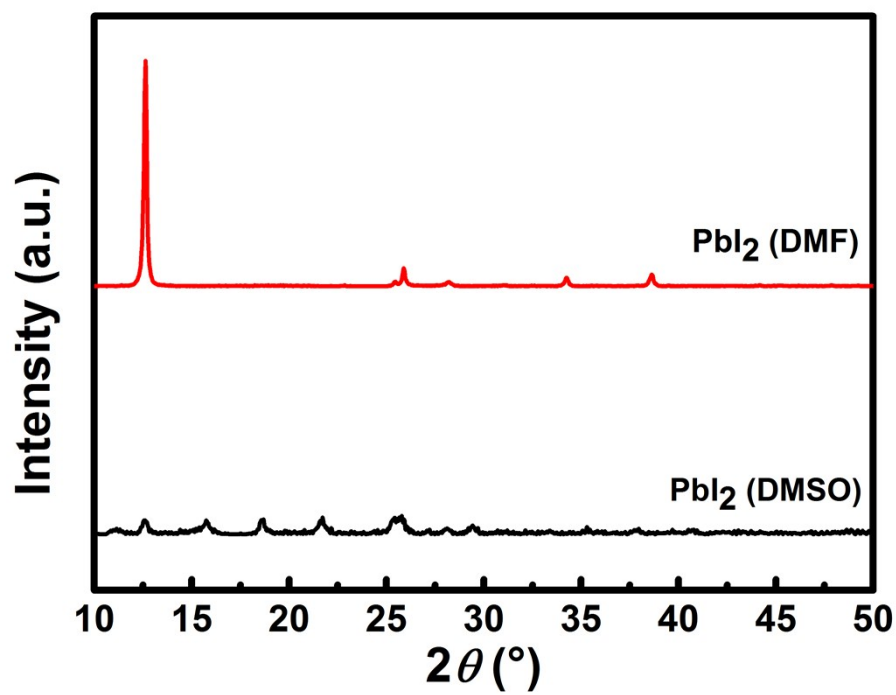


Fig. S1. XRD patterns of DMF and DMSO based PbI₂ films.

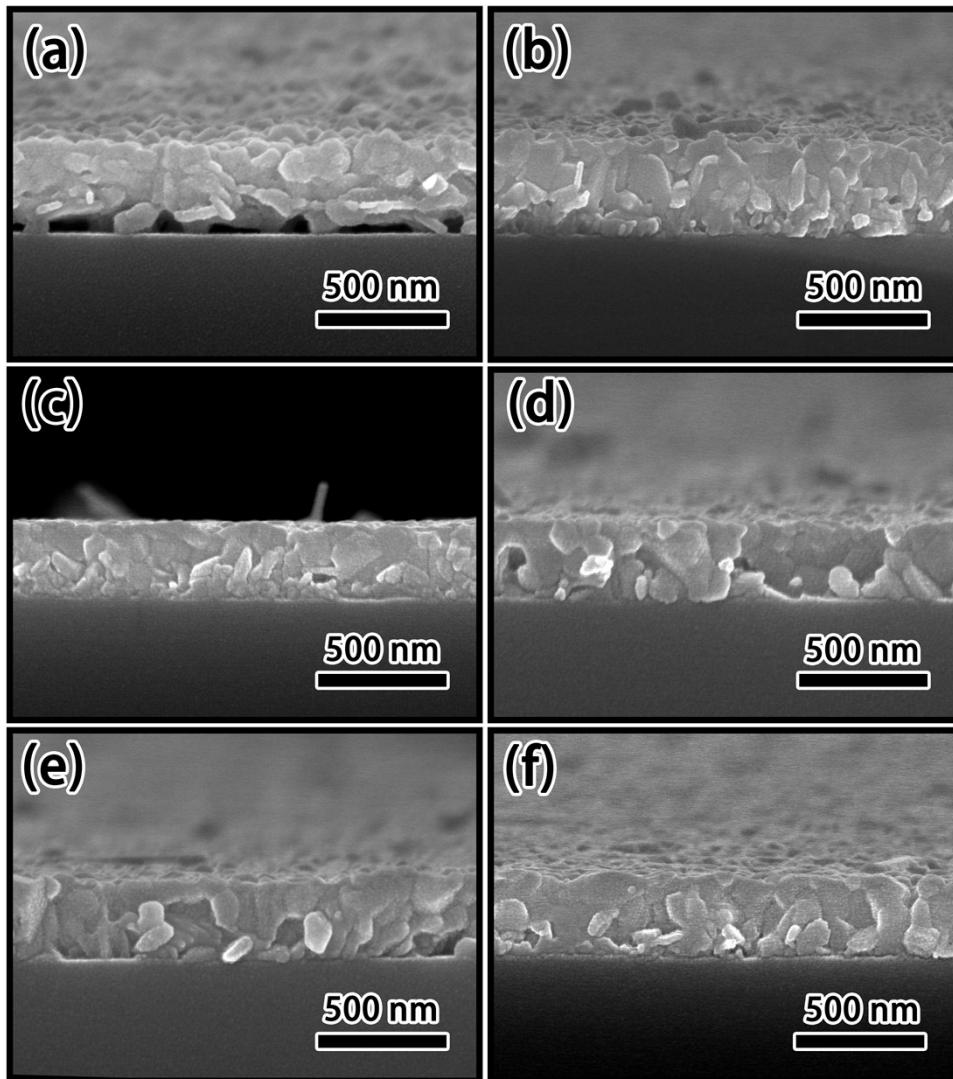


Fig. S2. Cross-sectional SEM images of perovskite films converted from the PbI₂ films spin coated from the binary solvent (DMF:DMSO) solutions in 10:0 (a), 8:2 (b), 6:4 (c), 4:6 (d), 2:8 (e), and 0:10 (f) ratios.

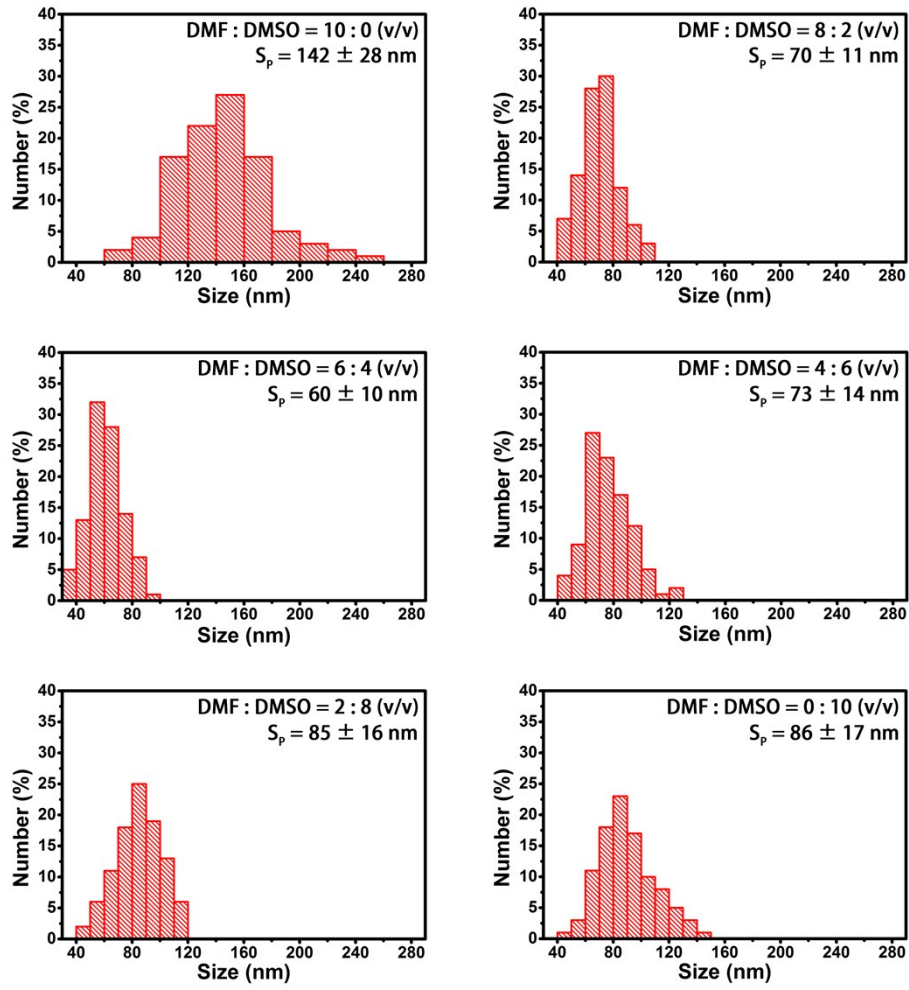


Fig. S3. Histogram of average particle size (S_p) for each perovskite thin film from the SEM images.

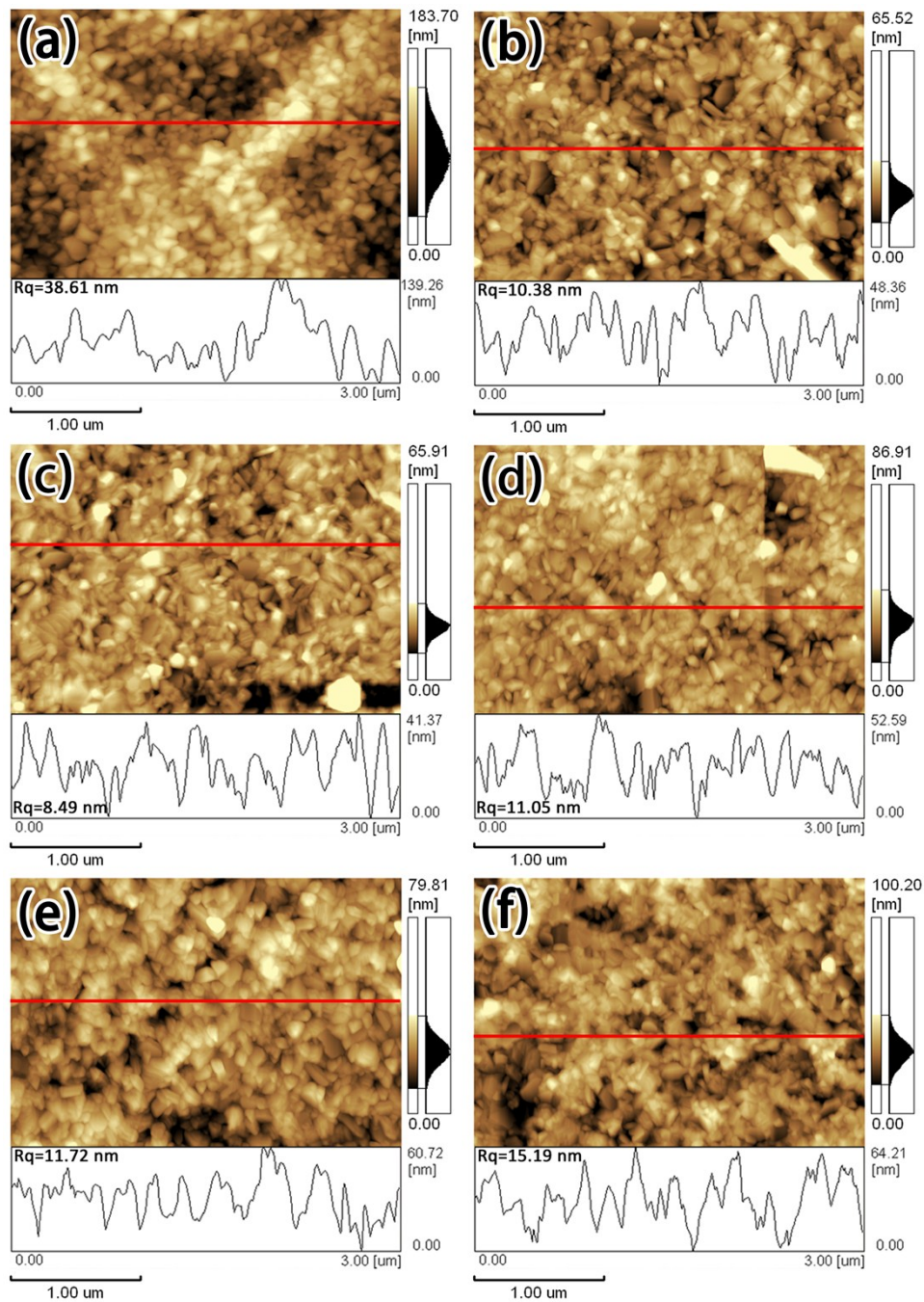


Fig. S4. AFM images of perovskite films converted from the PbI_2 films spin coated from the binary solvent (DMF:DMSO) solutions in 10:0 (a), 8:2 (b), 6:4 (c), 4:6 (d), 2:8 (e), and 0:10 (f) ratios. The

bottom curve is the roughness profile along the corresponding red line in each figure.

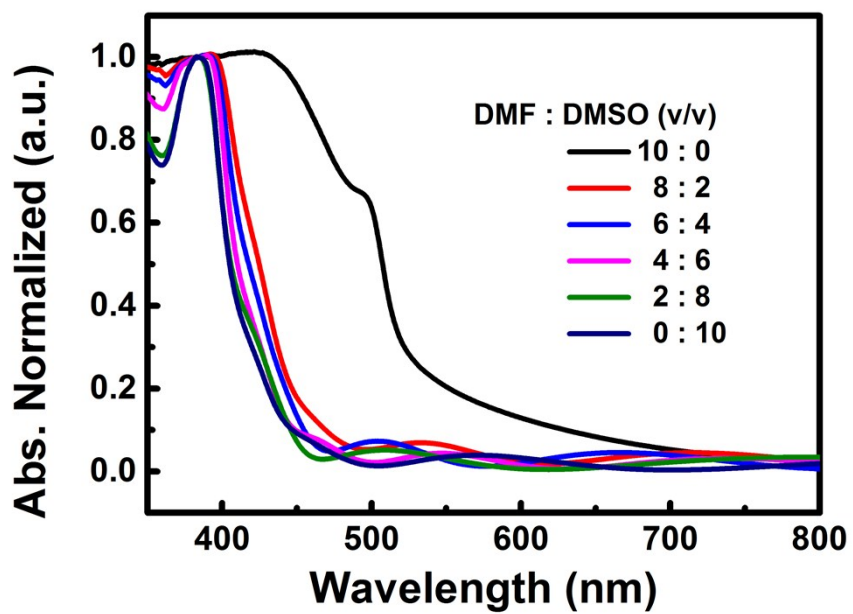


Fig. S5. UV-vis absorption spectra of PbI₂ films fabricated from DMF:DMSO binary solution in 10:0,

8:2, 6:4, 4:6, 2:8, and 0:10 ratios (v/v).

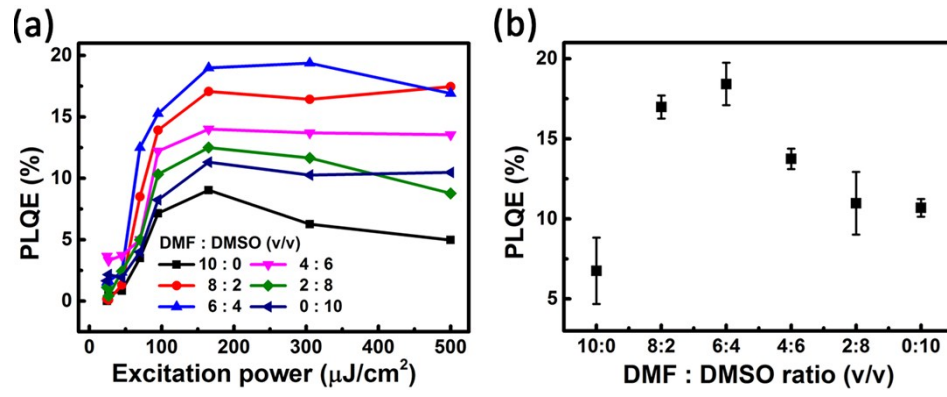


Fig. S6. PLQE of MAPbI₃ perovskite films based on PbI₂ (solvent) layers which prepared by binary solvent in different ratio.