

Online supporting information

New insights in partial nitrification start-up revealed by model based approach

Jun Wu*, Gang Yan, Guojing Zhou, Ting Xu

School of Environmental Engineering and science, Yangzhou University, 196 West Huayang Road, Yangzhou, Jiangsu, 225127, China. Tel: +86-514-87971389, Fax: +86-514-87978626, Email address: j.wu@yzu.edu.cn

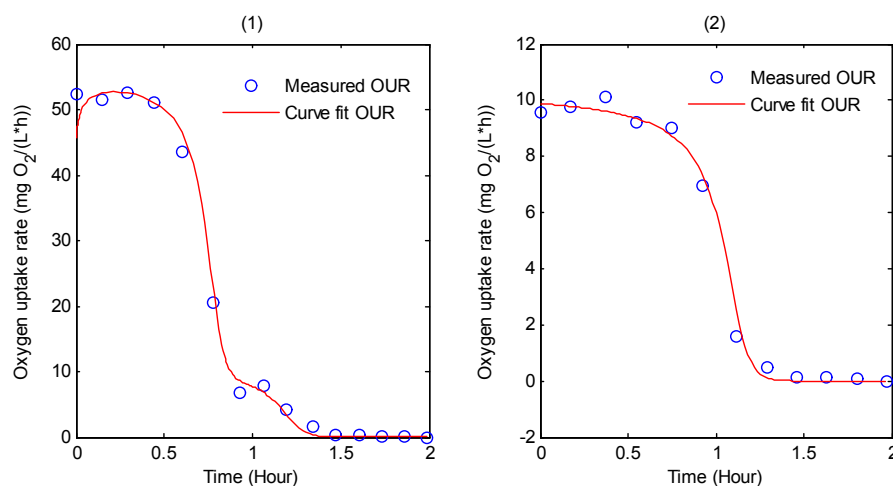


Fig. S1 - OUR measurement used for (1) Y_{AOB} and (2) Y_{NOB} experiment

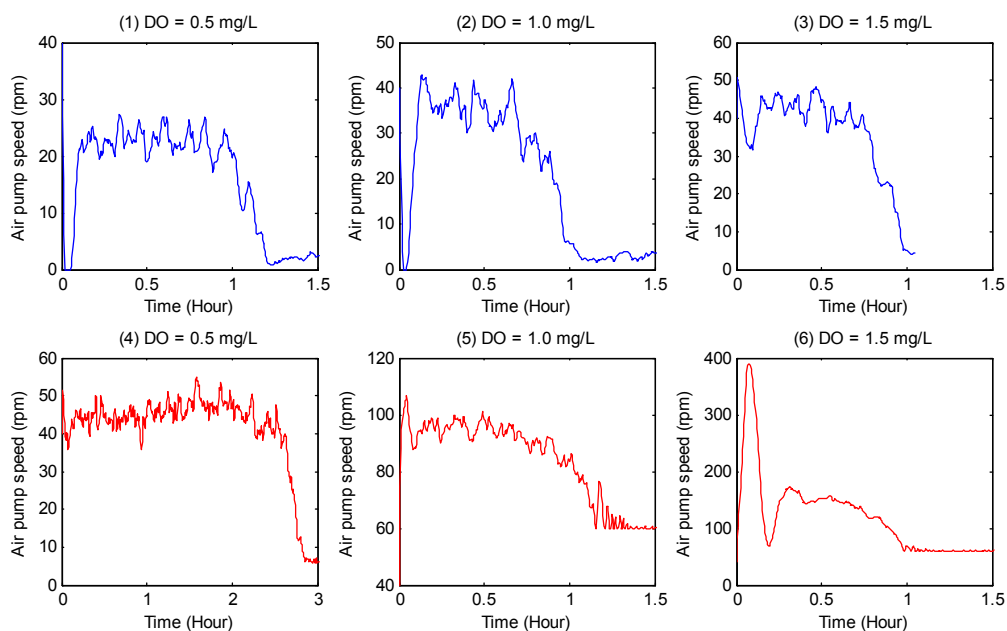


Fig.S2 - Air pump speed to maintain the desired DO concentration of 0.5, 1.0 and 1.5 mg/L during oxidation of $N-NO_2^-$ (1-3) and $N-NH_4^+$ (4-6)

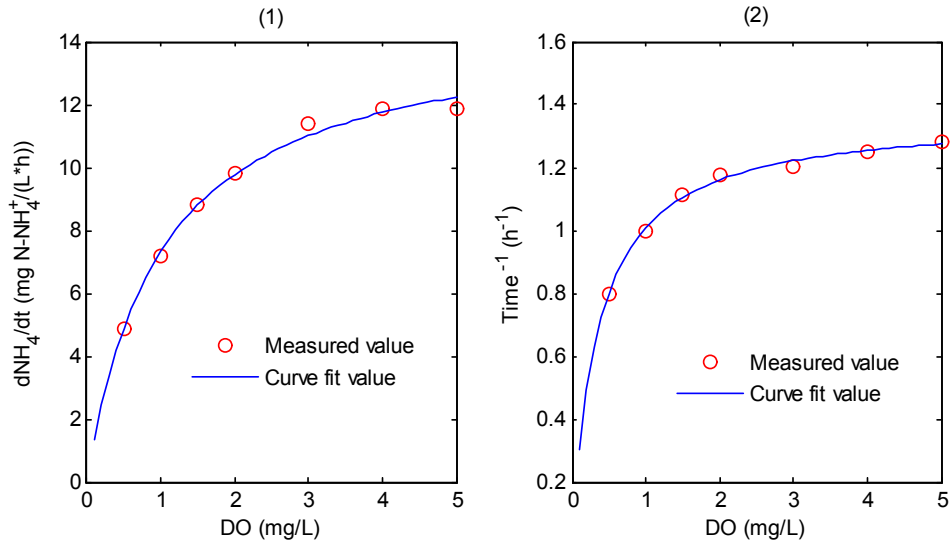


Fig.S3 - N-NH_4^+ and N-NO_2^- degradation rate at various DO concentration

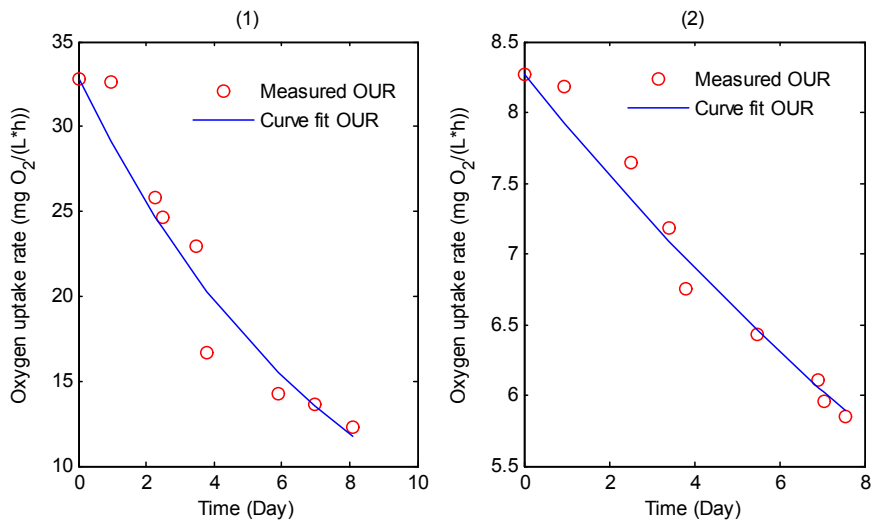


Fig.S4 - OUR measurement used for (1) b_{AOB} and (2) b_{NOB} experiment

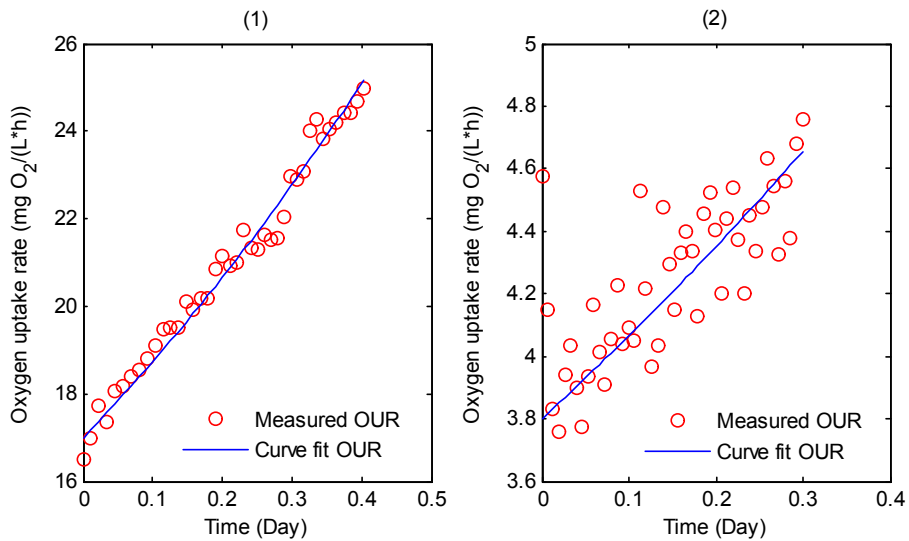


Fig.S5 - OUR measurement used for (1) μ_{AOB} and (2) μ_{NOB} experiment