

Supplementary Material (ESI) for RSC Advances
This journal is (c) The Royal Society of Chemistry 2015

Supporting Figures

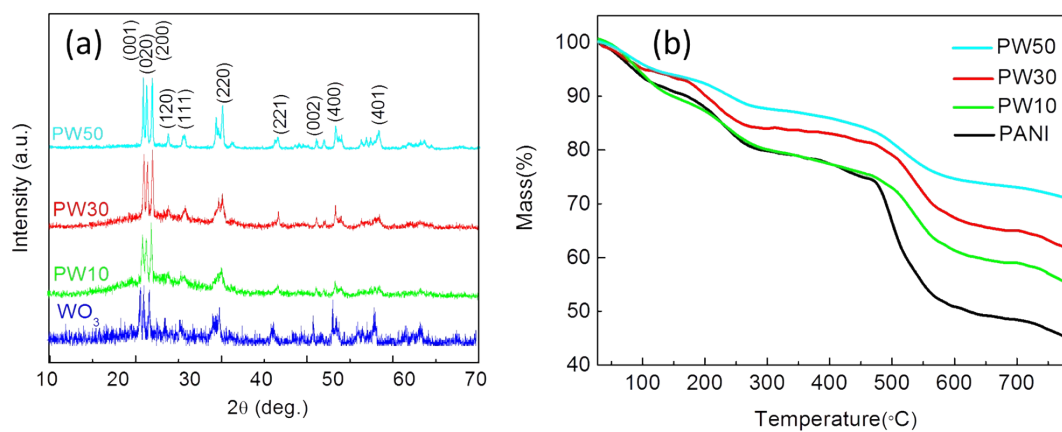


Fig.S1 (a) XRD patterns of WO₃ and PANI-WO₃ and (b) TGA curves of PANI and PANI-WO₃.

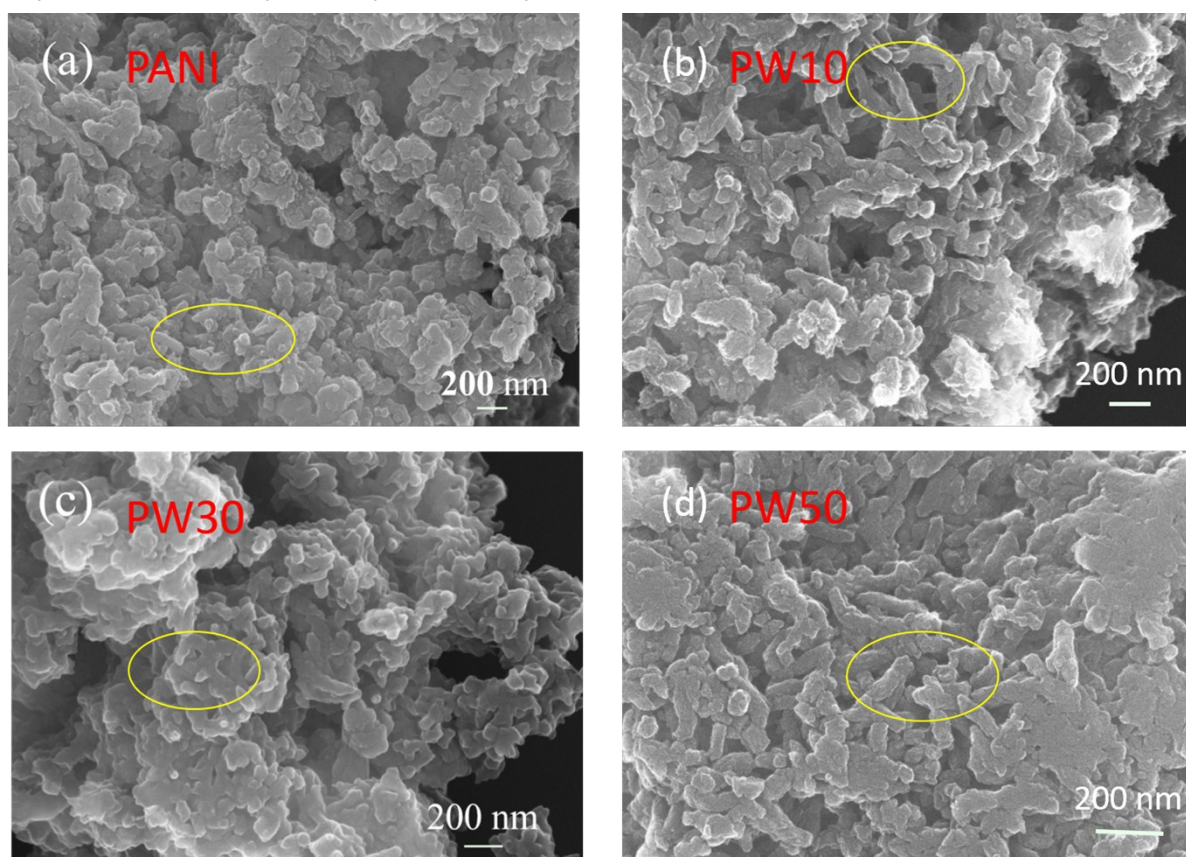


Fig.S2 FESEM images of (a) PANI, (b) PW10, (c) PW30 and (d) PW50.

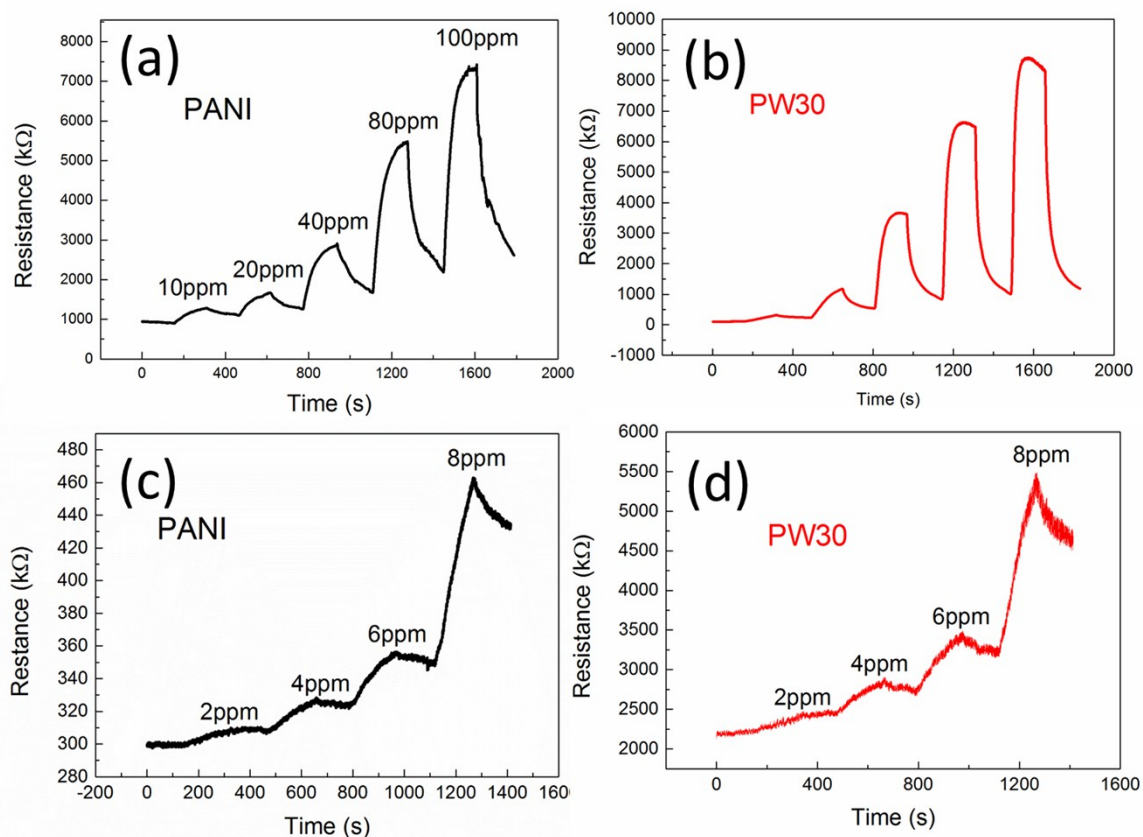


Fig.S3 Transient resistances of sensors based on (a) PANI, (b) PW30 to 10-100 ppm TEA and (c) PANI, (d) PW30 to 2-8 ppm TEA at room temperature.