

A smart fluorescent probe for simultaneous detection of GSH and Cys in human plasma and cells

Jian Pan,^{‡,a} Yue Zhang,^{‡,a} Junchao Xu,^a Jinbiao Liu,^a Lintao Zeng,^{a,*} and Guang-Ming Bao^{b,*}

^a *School of Chemistry & Chemical Engineering, Tianjin University of Technology, Tianjin, P. R. China, 300384. E-mail: zlt1981@126.com.*

^b *Department of Veterinary Medicine, School of Animal Science and Technology, Jiangxi Agricultural University, Nanchang 330045, P.R. China E-mail: bycb2005@gmail.com.*

[‡] These authors contributed equally to this work.

Table of Contents

1. ¹H NMR, ¹³C NMR and HR-MS spectra of intermediates and the probe **BY-NBD**
2. HR-MS spectra of NBD-Cys and NBD-GSH
3. The fluorescence spectra of human plasma and human plasma with **BY-NBD**.

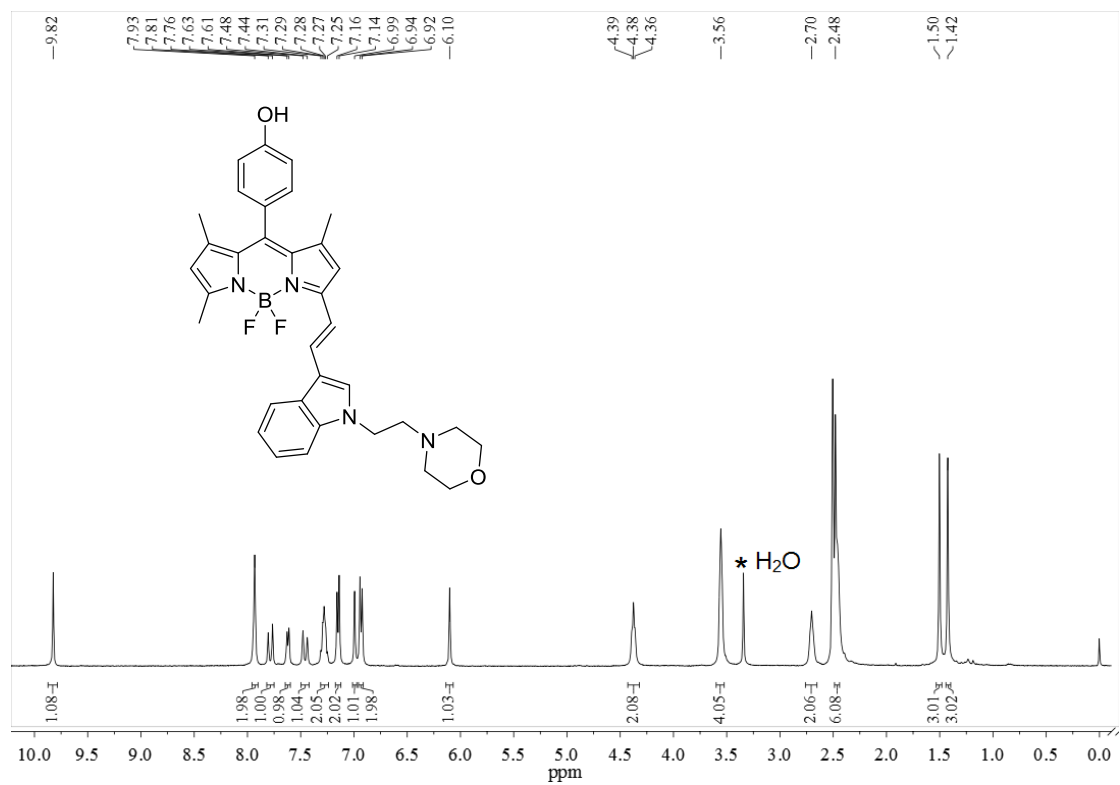


Fig. S1 ^1H NMR spectrum of indole-BODIPY in $\text{DMSO-}d_6$ (400 MHz)

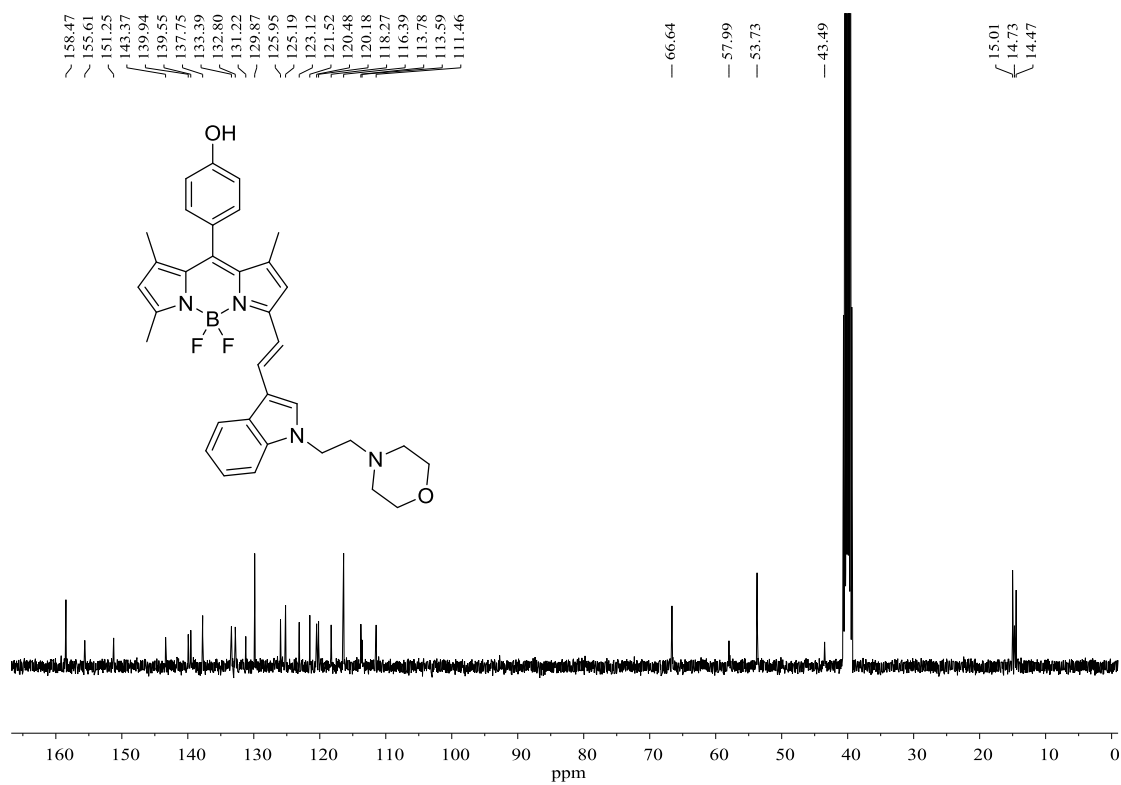


Fig. S2 ^{13}C NMR spectrum of indole-BODIPY in $\text{DMSO-}d_6$ (100 MHz)

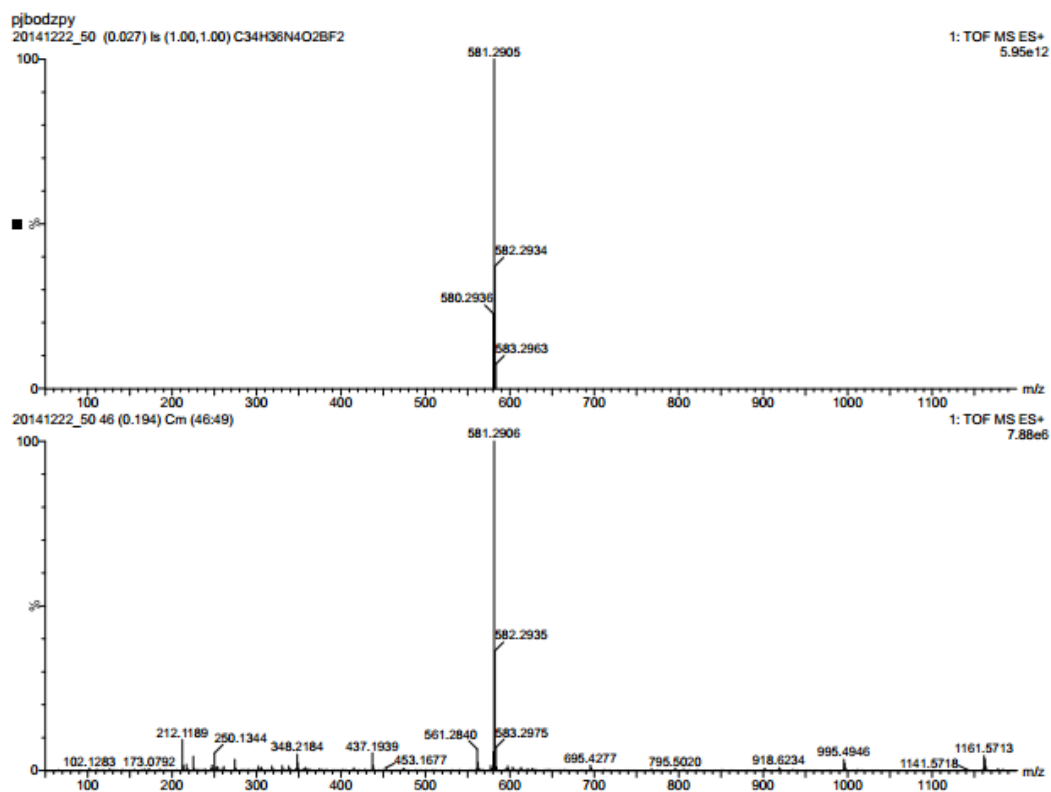


Fig. S3 HR-MS (ESI) spectrum of indole-BODIPY

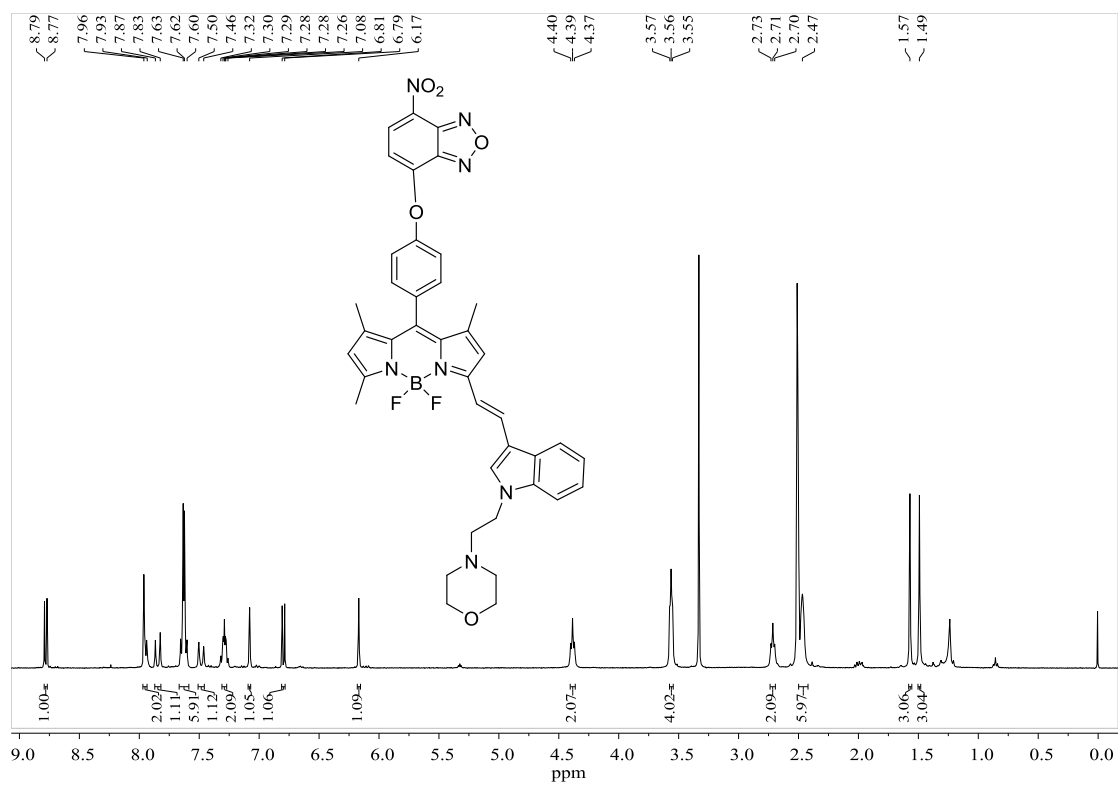


Fig. S4. ¹H NMR spectrum of the probe **BY-NBD** in DMSO-*d*₆ (400 MHz)

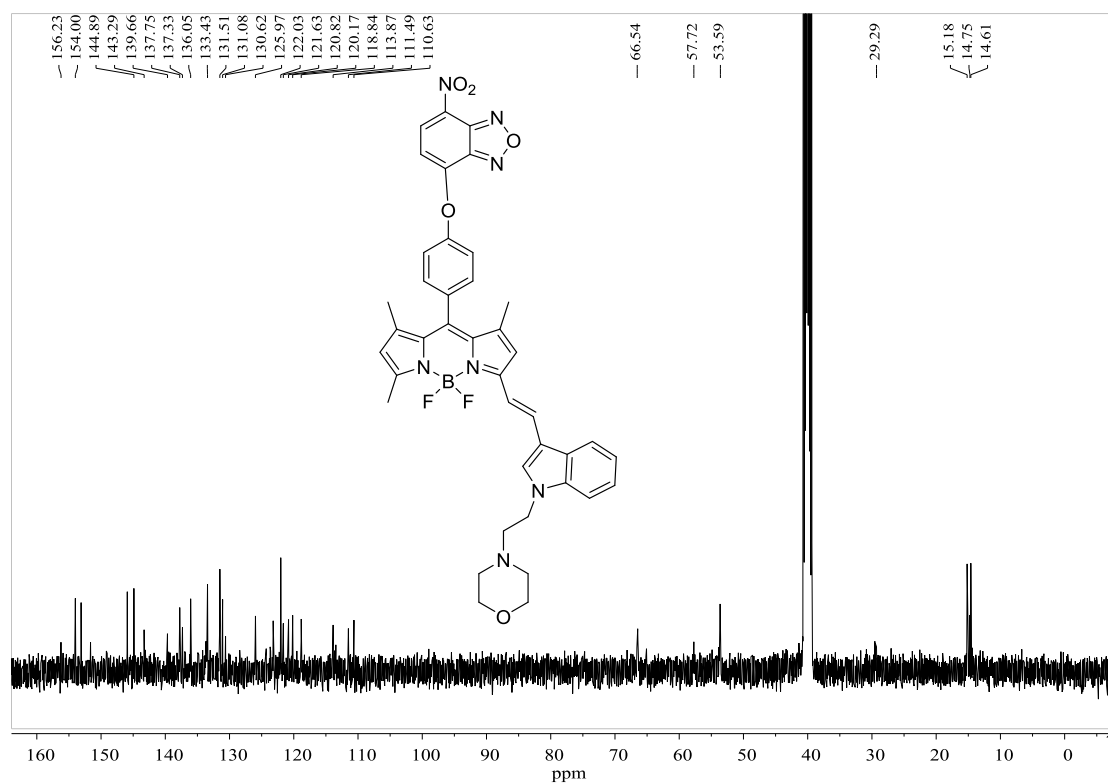


Fig. S5. ¹³C NMR spectrum of the probe **BY-NBD** in DMSO-*d*₆ (100 MHz)

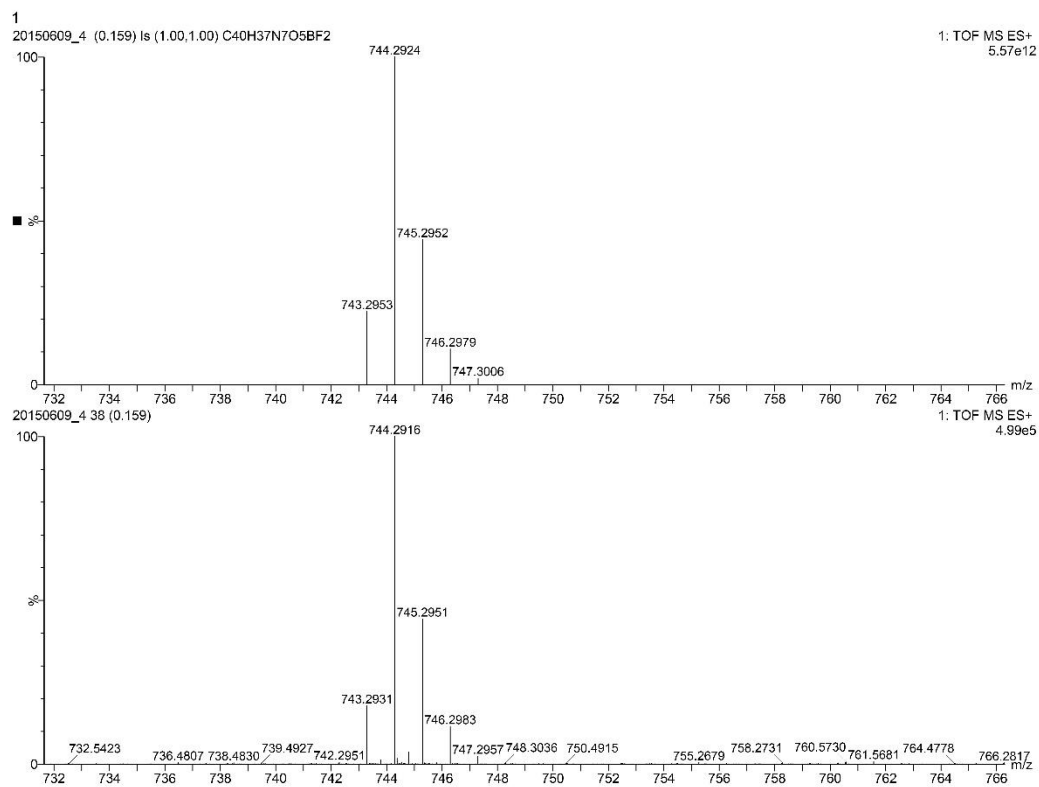


Fig. S6. HR-MS (ESI) spectrum of the probe **BY-NBD**

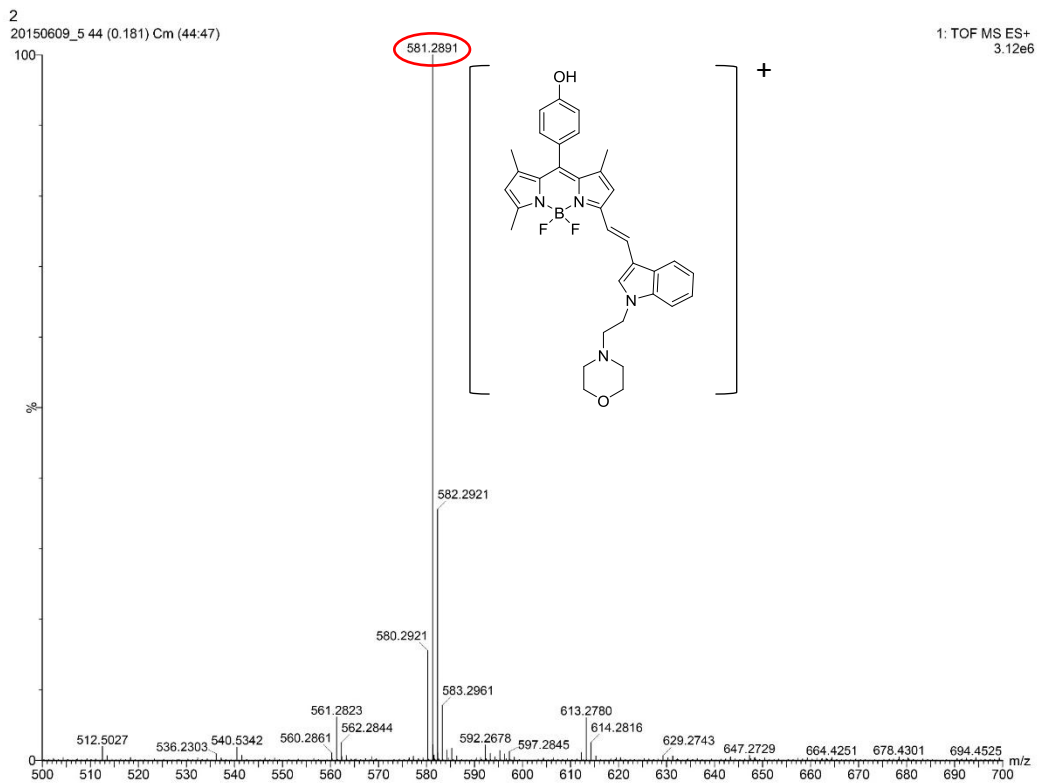


Fig. S7. HR-MS (ESI) spectrum of reaction products of the probe **BY-NBD** with
Cys/GSH

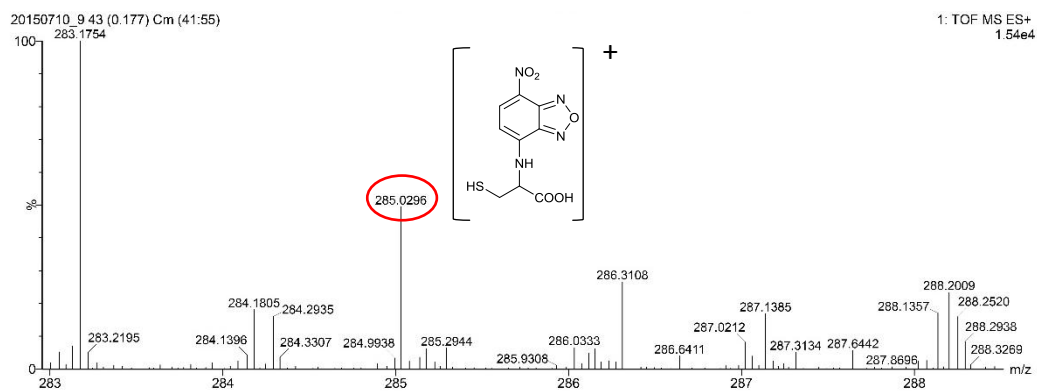


Fig. S8. HR-MS (ESI) spectrum of NBD-Cys

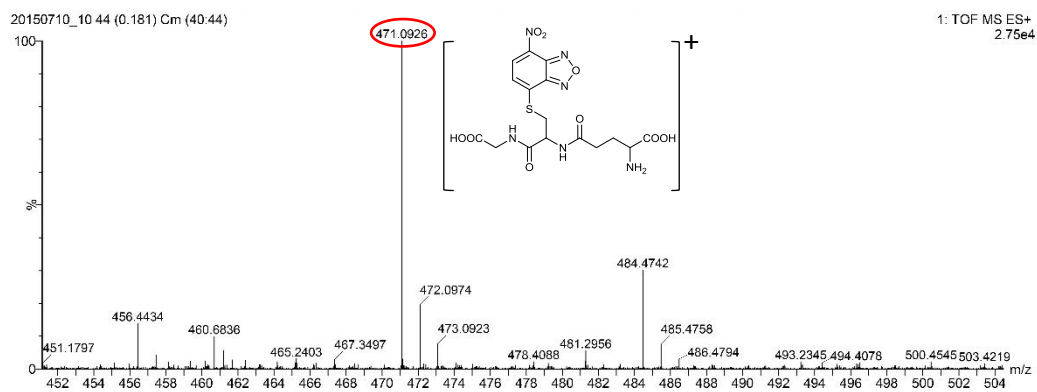


Fig. S9. HR-MS (ESI) spectrum of NBD-GSH

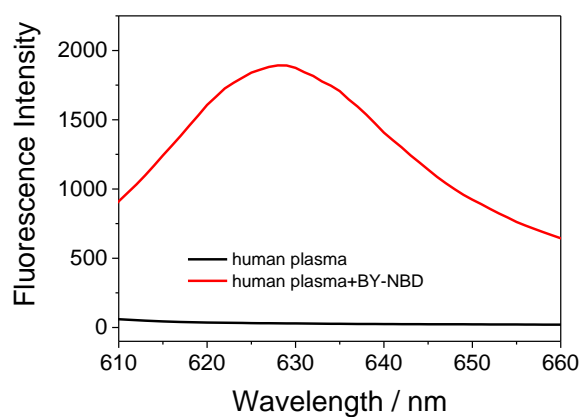


Fig. S10. The fluorescence spectra of human plasma and human plasma with BY-NBD