

Supplementary material for:

Production of biochars from Ca impregnated ramie biomass (*Boehmeria nivea* (L.)
Gaud.) and their phosphate removal potential

2 figures

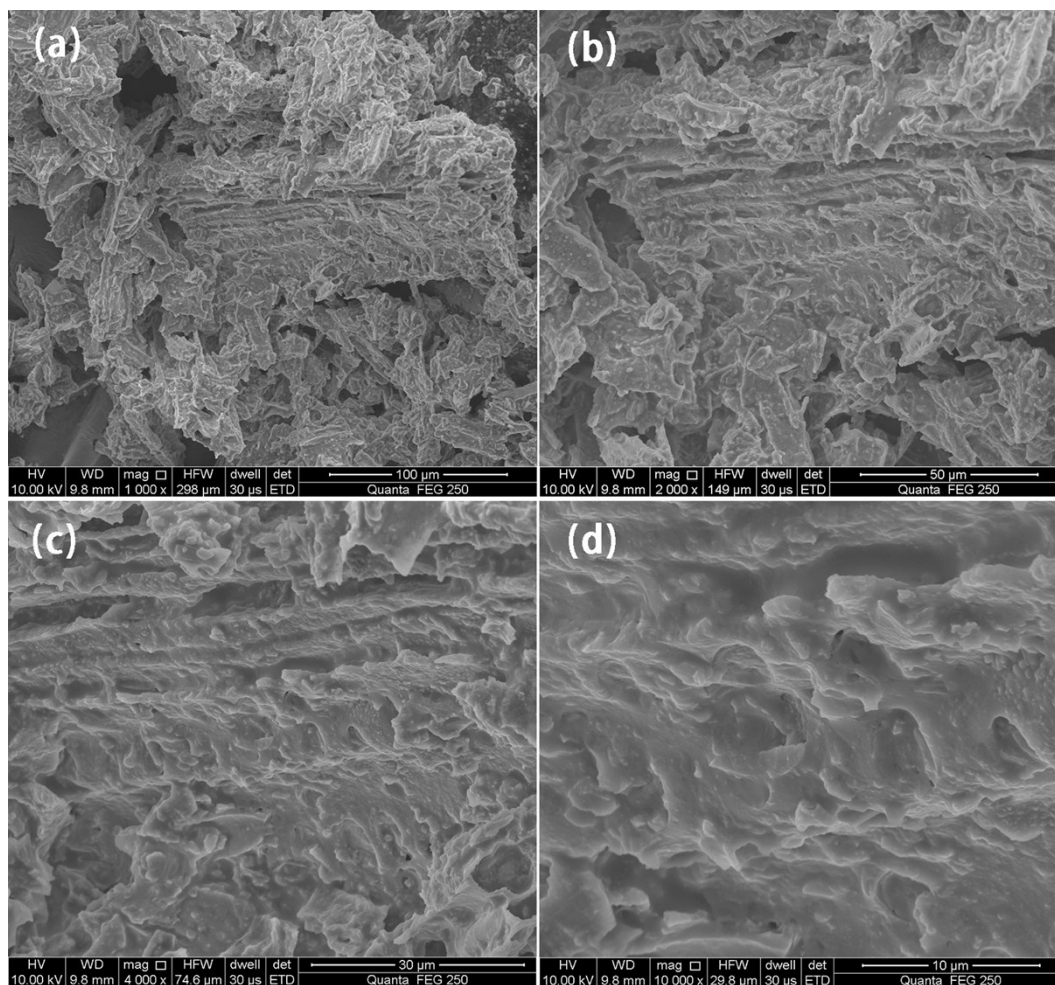


Fig. S1. The SEM images of Ca-RSB.

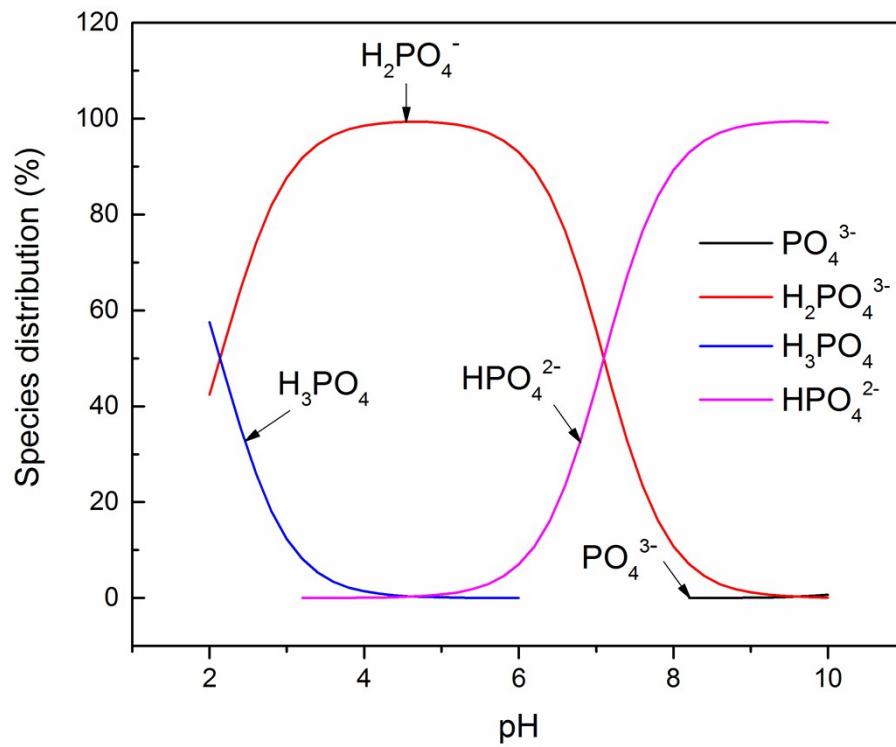


Fig. S2. Distribution of phosphate species as predicted by Visual MINTEQ: C_0 (phosphate) = 100 mg/L, $T = 299$ K.