

Electronic Supplementary Information

Controlling the Morphology and Property of Carbon Fiber/Polyaniline Composites for Supercapacitor Electrode Materials by Surface Functionalization

*FuyouKe, Jun Tang, ShanyiGuang, Hongyao Xu**

College of Material Science and Engineering & State Key Laboratory for Modification of Chemical Fibers and Polymer Materials, Donghua University, Shanghai 201620, China.

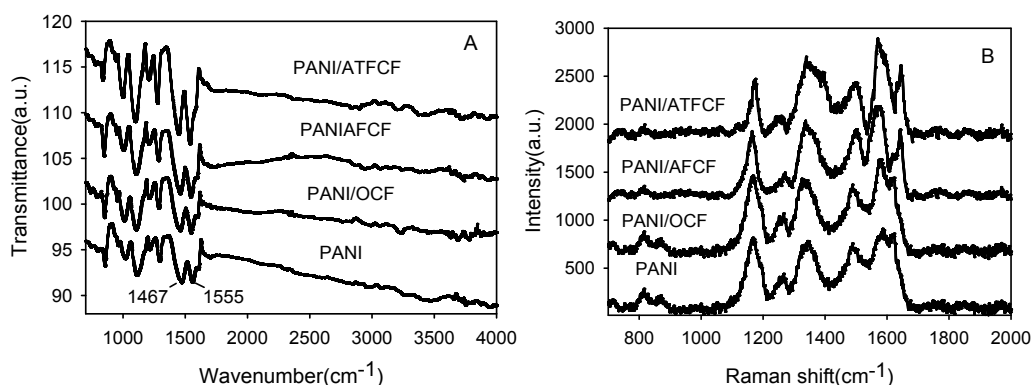


Figure S1 (A) FTIR spectra and (B) Raman spectra of PANI and PANI/CF composite materials.

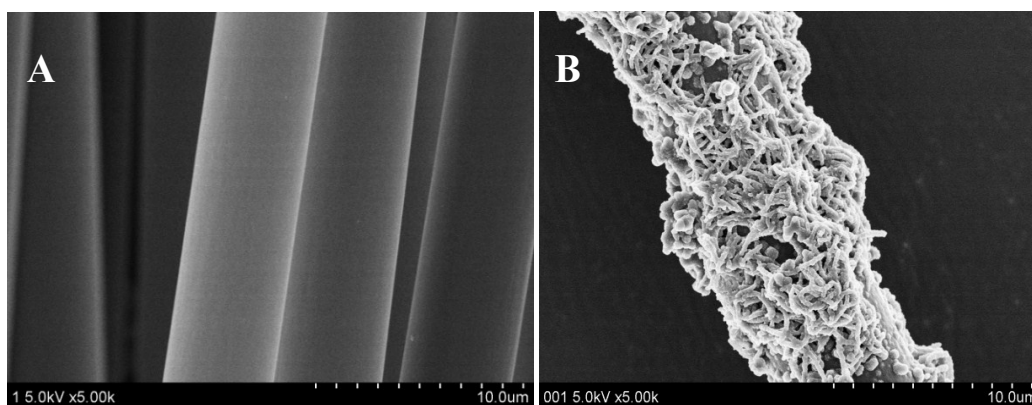


Figure S2 SEM images of carbon fiber (A) and PANI/CF (B).

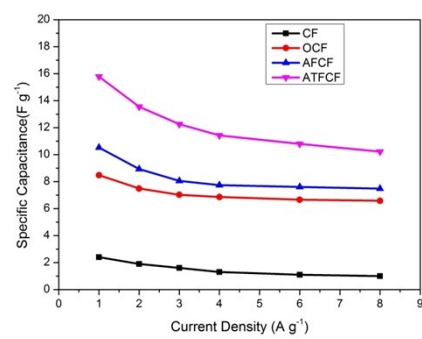


Figure S3 Specific capacitance of CFs at various current densities.